

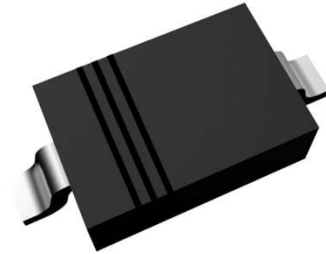
SK VARIABLE CAPACITANCE DIODE SILICON TYPE

Application

- Frequency modulation in FM Radio
- FM and AFC in communication set

Features

- Excellent linearity
- Capacitance ratio: $C_{0.5V}/C_{5.0V}=3.25$ (Typ)
- Low series resistance: $r_s \leq 0.8\Omega$
- package: SOD-323



SOD-323

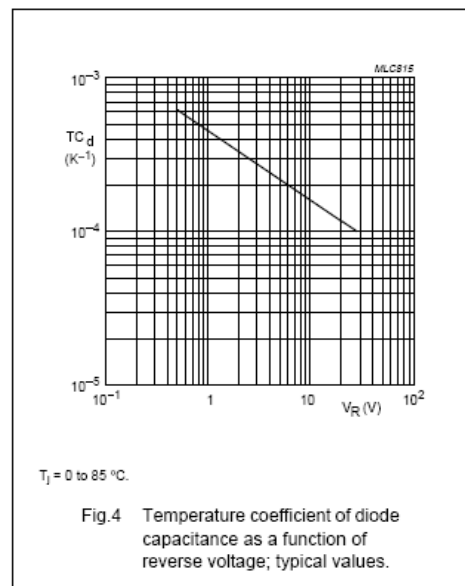
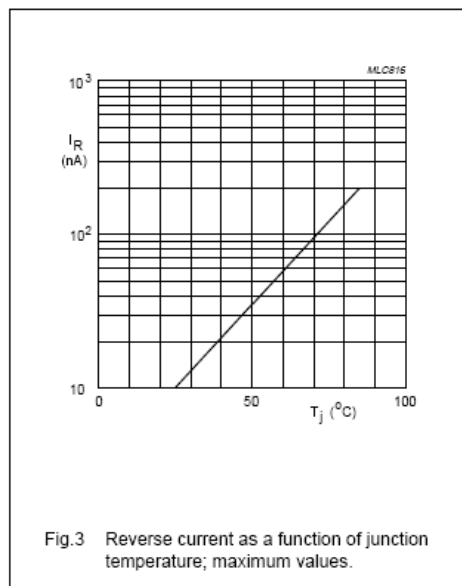
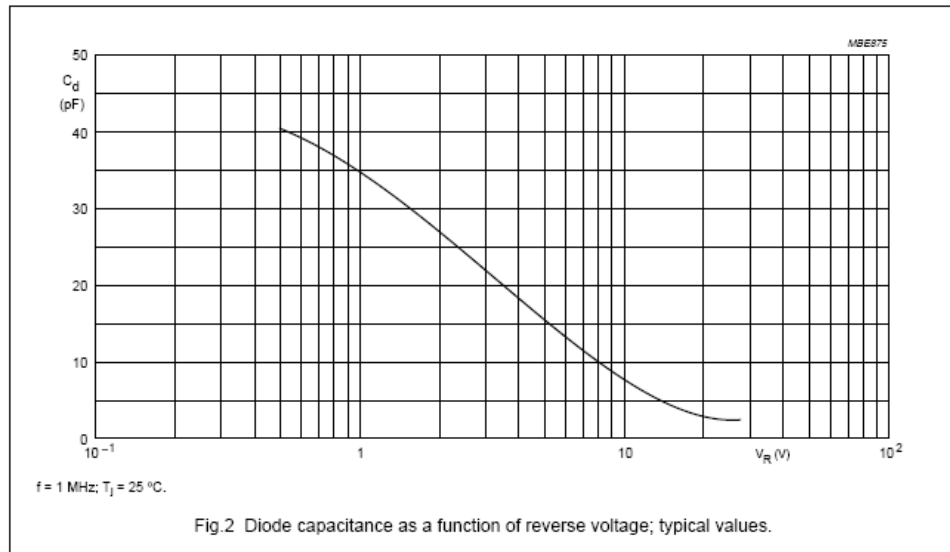
Maximum ratings

Parameter	Symbol	Rating		Unit
		Min	Max	
Assignment Temperature Range	T_{amb}	-55	100	°C
Storage Temperature Range	T_{atg}	-55	125	°C
Maximum Reverse voltage	V_{RM}		6	V
Junction Temperature	T_j		125	°C
Forward voltage($I_F=20mA$)	V_F		1	V

Electrical Characteristics(at $T_{amb}=25^\circ C$)

Parameter	Symbol	Test Conditions	Min	Typ	Max	Unit
Diode capacitance	C1	$VR1=0.5V$	35	40	45	PF
Diode capacitance	C2	$VR2=5V$	10		20	PF
Capacitance ratio	C1/C2	$VR1=0.5V, VR2=5V$	1.2		5	
Reverse Current	IR	$VR=6V$			10	nA
Forward Voltage	VF	$IF=20mA$			1	V
series resistance	r_s	$F=470MHz, C0=14pF$			0.8	Ω

GRAPHICAL DATA



X-ON Electronics

Largest Supplier of Electrical and Electronic Components

Click to view similar products for [Varactor Diodes](#) category:

Click to view products by [Shikues](#) manufacturer:

Other Similar products are found below :

[MA46H201-1056](#) [MAVR-001330-12790T](#) [MVAM108](#) [SVC704-TL-E](#) [SVC710-TL-E](#) [1SV324TPH3F](#) [MAVR-000083-0287AT](#) [MAVR-044769-12790T](#) [SVC203C-AA-TB-E](#) [SVC270-TL-E](#) [RKV501KJ#R1](#) [RKV606KL#R1](#) [HVL375CKRF-E](#) [MA46H204-1056](#) [MA46H202-1088](#) [MA46H202-1056](#) [MA46H203-1056](#) [MA46H120](#) [MA46H070-1056](#) [1SV229\(TPH3,F\)](#) [1SV239\(TPH3,F\)](#) [1SV282\(TPH3,F\)](#) [SMV1275-079LF](#) [SVC272-TL-E](#) [GC2510-17](#) [MAVR-001350-12790T](#) [SMV1251-040LF](#) [MAVR-000409-0287FT](#) [GC2521-450A](#) [K VX2301-23-0](#) [K VX3901A-23-4](#) [K VX2162-23-0](#) [K VX1501-23-0](#) [K VX2132-23-0](#) [K VX38S2-23-0](#) [GCX1204-23-0](#) [K VX3901A-23-0](#) [MPV1965-206](#) [K VX2122-23-0](#) [MPV2100-206](#) [K VX2001-23-0](#) [BB172X](#) [BB187LX,315](#) [BB535E7904HTSA1](#) [BBY5303WE6327HTSA1](#) [1SV305,L3F](#) [1SV270TPH3F](#) [1SV239TPH3F](#) [1SV281\(TPH3,F\)](#) [BB545E7904HTSA1](#)