

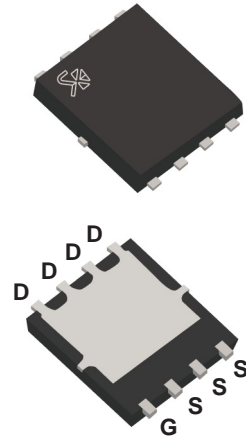
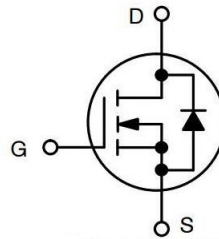
N-Channel MOSFET

Feature

- 150V N-Channel MOSFET
- $R_{DS(ON)} = 105m\Omega$ (typ.) @ $V_{GS} = 10V$
- Reliable and Rugged

Applications

- DC/DC for Boost Converters
- Synchronous Rectifiers for SMPS
- LED Backlighting



PDFN5060

1. Absolute Maximum Ratings ($T_A=25^\circ C$ Unless Otherwise Noted)

Symbol	Parameter	Rating	Unit
V_{DSS}	Drain-Source Voltage	150	V
V_{GSS}	Gate-Source Voltage	± 20	
I_D	Continue Drain Current	14	A
I_{DM}^a	Pulsed Drain Current	34	
T_J	Maximum Junction Temperature	150	$^\circ C$
T_{STG}	Storage Temperature Range	-55 to 150	
$R_{\theta JC}$	Thermal Resistance- Junction to Case (PDFN5*6)	2.7	

2. Static Electrical Characteristics ($T_A=25^\circ C$ Unless Otherwise Noted)

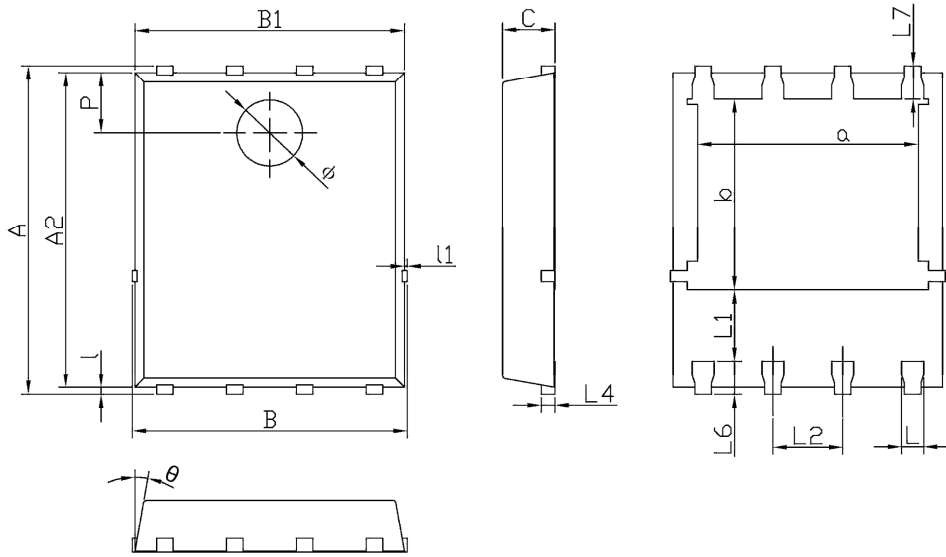
Symbol	Parameter	Test Condition	Min.	Typ.	Max.	Unit
Static Characteristics						
BV_{DSS}	Drain-Source Breakdown Voltage	$V_{GS}=0V, I_{DS}=250\mu A$	150	-	-	V
I_{DSS}	Zero Gate Voltage Drain Current	$V_{DS}=120V, V_{GS}=0V$ $T_J=85^\circ C$	-	-	1	μA
			-	-	30	
$V_{GS(th)}$	Gate Threshold Voltage	$V_{DS}=V_{GS}, I_{DS}=250\mu A$	1.3	1.8	2.5	V
I_{GSS}	Gate Leakage Current	$V_{GS}=\pm 20V, V_{DS}=0V$	-	-	± 100	nA
$R_{DS(ON)}$	Drain-Source On-state Resistance	$V_{GS}=10V, I_{DS}=1A$	-	105	130	$m\Omega$
V_{SD}	Diode Forward Voltage	$I_{SD}=1A, V_{GS}=0V$	-	0.75	1.1	V

*Note:

a : Current maybe limit by junction temperature

PDFN5060

Unit:mm



Dimensions In Millimeterer			
Symbol	MIN	TYP	MAX
A	5.90	6.00	6.10
a	3.91	4.01	4.11
A2	5.70	5.75	5.80
B	4.90	5.00	5.10
b	3.37	3.47	3.57
B1	4.80	4.90	5.00
C	0.90	0.95	1.00
L	0.35	0.40	0.45
l	0.06	0.13	0.20
L1	1.10	-	-
l1	-	-	0.10
L2	1.17	1.27	1.37
L4	0.21	0.26	0.34
L6	0.51	0.61	0.71
L7	0.51	0.61	0.71
P	1.00	1.10	1.20
θ	8°	10°	12°
ϕ	1.10	1.20	1.30

X-ON Electronics

Largest Supplier of Electrical and Electronic Components

Click to view similar products for [MOSFET](#) category:

Click to view products by [Shikues](#) manufacturer:

Other Similar products are found below :

[614233C](#) [648584F](#) [MCH3443-TL-E](#) [MCH6422-TL-E](#) [FDPF9N50NZ](#) [NTNS3A92PZT5G](#) [IRFD120](#) [IRFF430](#) [JANTX2N5237](#) [2N7000](#)
[AOD464](#) [2SK2267\(Q\)](#) [2SK2545\(Q,T\)](#) [405094E](#) [423220D](#) [MIC4420CM-TR](#) [VN1206L](#) [614234A](#) [715780A](#) [SSM6J414TU,LF\(T](#) [751625C](#)
[IPS70R2K0CEAKMA1](#) [BSF024N03LT3 G](#) [PSMN4R2-30MLD](#) [TK31J60W5,S1VQ\(O](#) [2SK2614\(TE16L1,Q\)](#) [DMN1017UCP3-7](#)
[EFC2J004NUZTDG](#) [FCAB21350L1](#) [P85W28HP2F-7071](#) [DMN1053UCP4-7](#) [NTE2384](#) [NTE2969](#) [NTE6400A](#) [DMC2700UDMQ-7](#)
[DMN2080UCB4-7](#) [DMN61D9UWQ-13](#) [US6M2GTR](#) [DMN31D5UDJ-7](#) [SSM6P54TU,LF](#) [DMP22D4UFO-7B](#) [IPS60R3K4CEAKMA1](#)
[DMN1006UCA6-7](#) [DMN16M9UCA6-7](#) [STF5N65M6](#) [IRF40H233XTMA1](#) [IPSA70R950CEAKMA1](#) [IPSA70R2K0CEAKMA1](#) [STU5N65M6](#)
[C3M0021120D](#)