

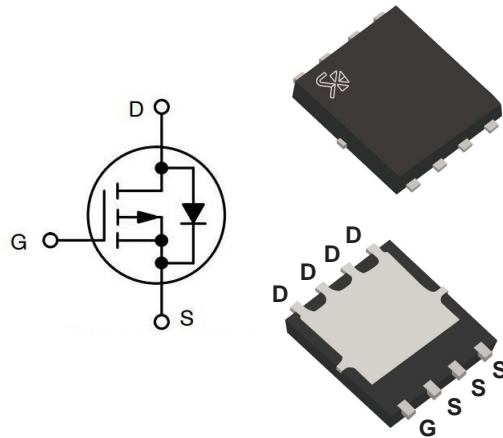
## 30V P-Channel MOSFET

### Feature

- 30V P-Channel MOSFET High Dense Design.
- Ultra low On-Resistance.
- Reliable and Rugged.

### Applications

- Power Management in Notebook Computer, and Portable Equipment and Battery Systems.



PDFN5060

### Electrical Characteristics

Absolute Maximum Ratings (T <sub>C</sub> =25°C unless otherwise noted)			
Parameter	Symbol	Value	Unit
Drain-Source Voltage	V <sub>DSS</sub>	-30V	V
Gate-Source Voltage	V <sub>GSS</sub>	±20V	V
Drain Current-Continuous @ T <sub>C</sub> =25°C	I <sub>D</sub>	-35	A
Drain Current-Pulsed	I <sub>DM</sub>	-70	A
Operating Junction Temperature Range	T <sub>J</sub>	-55 to 150°C	°C

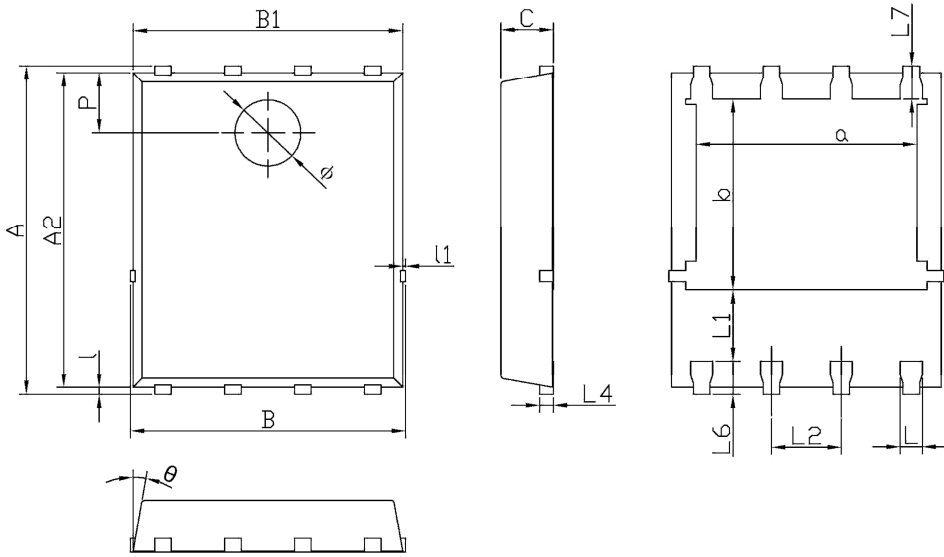
### Electrical Characteristics(T<sub>A</sub>=25°C unless otherwise noted)

Parameter	Symbol	Conditions	Min.	Typ.	Max.	Unit
OFF CHARACTERISTIC						
Drain-Source Breakdown Voltage	B <sub>V</sub> D <sub>SS</sub>	V <sub>GS</sub> =0V , I <sub>D</sub> =-250uA	-30	-	-	V
Drain-Source Leakage Current	I <sub>DSS</sub>	V <sub>DS</sub> =-24V, V <sub>GS</sub> =0V, T <sub>J</sub> =25°C	-	-	1	uA
Gate-Source Leakage Current	I <sub>GSS</sub>	V <sub>GS</sub> =±20V , V <sub>DS</sub> =0V	-	-	±100	nA
ON CHARACTERISTIC						
Gate Threshold Voltage	V <sub>GS(TH)</sub>	V <sub>GS</sub> =V <sub>DS</sub> , I <sub>D</sub> =-250uA	-1.0	-	-2.5	V
Static Drain-Source On-Resistance	R <sub>DS(ON)</sub>	V <sub>GS</sub> =-10V , I <sub>D</sub> =-6A	-	-	20	mΩ
		V <sub>GS</sub> =-4.5V , I <sub>D</sub> =-4A	-	-	32	
DYNAMIC CHARACTERISTICS						
Input Capacitance	C <sub>iss</sub>	V <sub>DS</sub> =-15V, V <sub>GS</sub> =0V, f=1MHz	-	1345	-	pF
Output Capacitance	C <sub>oss</sub>		-	194	-	
Reverse Transfer Capacitance	C <sub>rss</sub>		-	158	-	
DRAIN-SOURCE DIODE CHARACTERISTICS AND MAXIMUM RATINGS						
Drain-Source Diode Forward Voltage	V <sub>SD</sub>	V <sub>GS</sub> =0V, I <sub>S</sub> =-1.0A	-	-	-1.2	V

Note: 1. The data tested by pulsed, pulse width ≤300us, duty cycle ≤2%.  
2. R<sub>dson</sub> calculated by package type.

PDFN5060

Unit:mm



Dimensions In Millimeterer			
Symbol	MIN	TYP	MAX
A	5.90	6.00	6.10
a	3.91	4.01	4.11
A2	5.70	5.75	5.80
B	4.90	5.00	5.10
b	3.37	3.47	3.57
B1	4.80	4.90	5.00
C	0.90	0.95	1.00
L	0.35	0.40	0.45
l	0.06	0.13	0.20
L1	1.10	-	-
l1	-	-	0.10
L2	1.17	1.27	1.37
L4	0.21	0.26	0.34
L6	0.51	0.61	0.71
L7	0.51	0.61	0.71
P	1.00	1.10	1.20
θ	8°	10°	12°
φ	1.10	1.20	1.30

## X-ON Electronics

Largest Supplier of Electrical and Electronic Components

*Click to view similar products for [MOSFET](#) category:*

*Click to view products by [Shikues](#) manufacturer:*

Other Similar products are found below :

[614233C](#) [648584F](#) [MCH3443-TL-E](#) [MCH6422-TL-E](#) [NTNS3A92PZT5G](#) [IRFD120](#) [IRFF430](#) [JANTX2N5237](#) [2N7000](#) [AOD464](#)  
[2SK2267\(Q\)](#) [2SK2545\(Q,T\)](#) [405094E](#) [423220D](#) [MIC4420CM-TR](#) [VN1206L](#) [614234A](#) [715780A](#) [SSM6J414TU,LF\(T](#) [751625C](#)  
[IPS70R2K0CEAKMA1](#) [BSF024N03LT3 G](#) [PSMN4R2-30MLD](#) [TK31J60W5,S1VQ\(O](#) [2SK2614\(TE16L1,Q\)](#) [DMN1017UCP3-7](#)  
[EFC2J004NUZTDG](#) [FCAB21350L1](#) [P85W28HP2F-7071](#) [DMN1053UCP4-7](#) [NTE2384](#) [NTE2969](#) [NTE6400A](#) [DMC2700UDMQ-7](#)  
[DMN2080UCB4-7](#) [DMN61D9UWQ-13](#) [US6M2GTR](#) [DMN31D5UDJ-7](#) [SSM6P54TU,LF](#) [DMP22D4UFO-7B](#) [IPS60R3K4CEAKMA1](#)  
[DMN1006UCA6-7](#) [DMN16M9UCA6-7](#) [STF5N65M6](#) [IRF40H233XTMA1](#) [IPSA70R950CEAKMA1](#) [IPSA70R2K0CEAKMA1](#) [STU5N65M6](#)  
[C3M0021120D](#) [DMN6022SSD-13](#)