

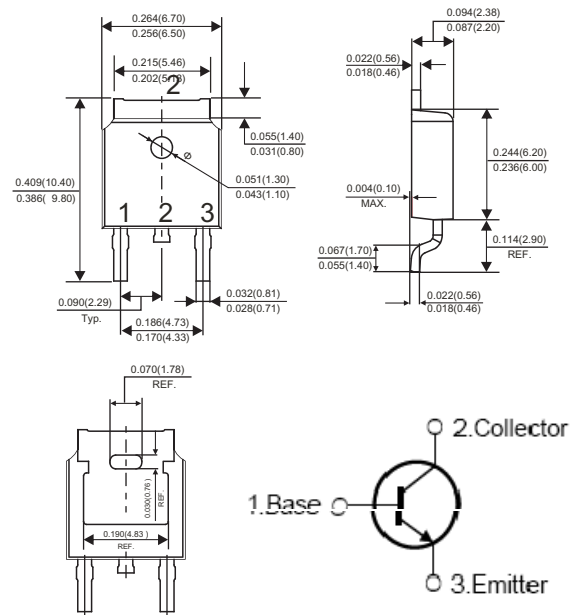
TO-252

Features

- Excellent Switching Times
: $t_{on}=1.1\mu S(\text{Max.})$, $t_f=0.7\mu S(\text{Max.})$, at $I_C=1.65A$
- High Collector Voltage : $V_{CBO}=800V$

MAXIMUM RATINGS (Ta=25°C)

CHARACTERISTIC		SYMBOL	RATING	UNIT
Collector-Base Voltage		V_{CBO}	800	V
Collector-Emitter Voltage		V_{CEO}	450	V
Emitter-Base Voltage		V_{EBO}	9	V
Collector Current	DC	I_C	1.65	A
	Pulse	I_{CP}	3.3	
Base Current		I_B	0.9	A
Collector Power Dissipation (Tc=25°C)		P_C	25	W
Junction Temperature		T_j	150	°C
Storage Temperature Range		T_{stg}	-65~150	°C



Dimensions in inches and (millimeters)

ELECTRICAL CHARACTERISTICS (Ta=25°C)

CHARACTERISTIC	SYMBOL	TEST CONDITION	MIN.	TYP.	MAX.	UNIT
Emitter Cut-off Current	I_{EBO}	$V_{EB}=9V$, $I_C=0$	-	-	10	μA
DC Current Gain	$h_{FE(1)}$ Note	$V_{CE}=2V$, $I_C=1A$	19	-	36	
	$h_{FE(2)}$	$V_{CE}=2V$, $I_C=1.65A$	5	-	25	
Collector-Emitter Saturation Voltage	$V_{CE(sat)}$	$I_C=0.5A$, $I_B=0.1A$	-	-	0.5	V
		$I_C=1A$, $I_B=0.25A$	-	-	1	
		$I_C=1.65A$, $I_B=0.5A$	-	-	3	
Base-Emitter Saturation Voltage	$V_{BE(sat)}$	$I_C=0.5A$, $I_B=0.1A$	-	-	1	V
		$I_C=1.65A$, $I_B=0.25A$	-	-	1.2	
Collector Output Capacitance	C_{ob}	$V_{CB}=10V$, $f=0.1MHz$	-	21	-	pF
Transition Frequency	f_T	$V_{CE}=10V$, $I_C=0.1A$	4	-	-	MHz
Turn-On Time	t_{on}		-	-	1.1	μS
Storage Time	t_{stg}		-	-	4.0	μS
Fall Time	t_f		-	-	0.7	μS

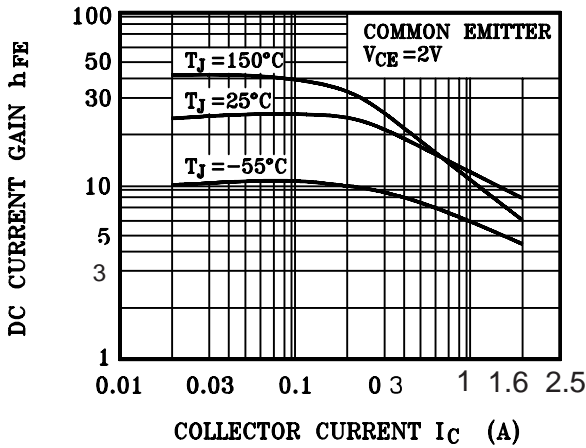
CLASSIFICATION OF $h_{FE(1)}$

Range	15-20	20-25	25-30	30-35

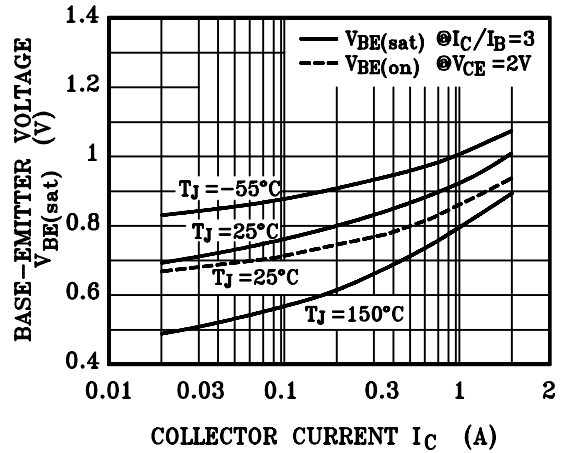


Typical Characteristics

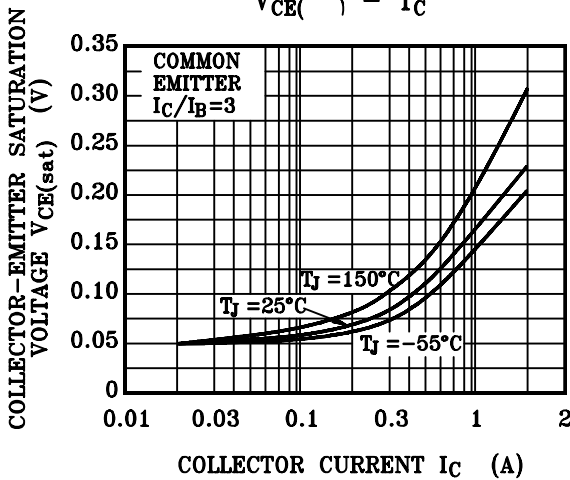
DC CURRENT GAIN



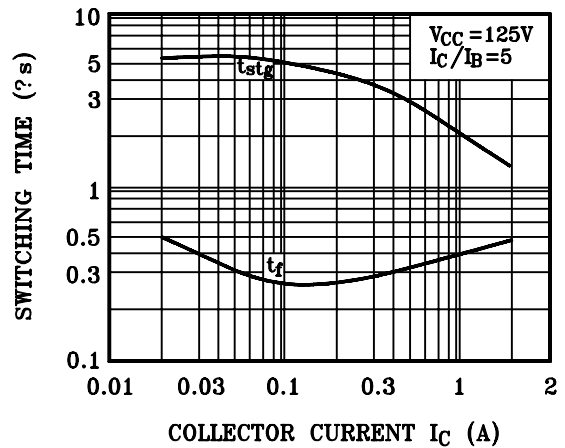
$V_{BE(sat)} - I_C$



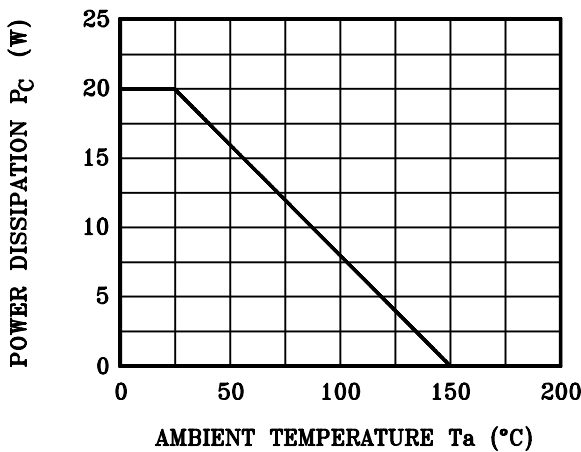
$V_{CE(sat)} - I_C$



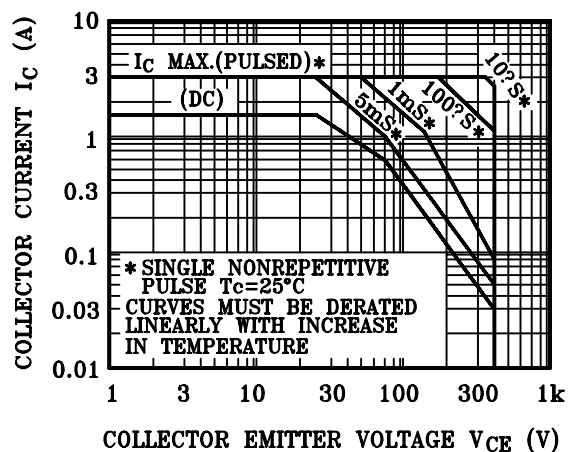
SWITCHING CHARACTERISTIC



$P_C - T_a$



SAFE OPERATING AREA



X-ON Electronics

Largest Supplier of Electrical and Electronic Components

Click to view similar products for [Bipolar Transistors - BJT category](#):

Click to view products by [ShunYe manufacturer](#):

Other Similar products are found below :

[619691C](#) [MCH4017-TL-H](#) [MMBT-2369-TR](#) [BC546/116](#) [BC557/116](#) [BSW67A](#) [NJVMJD148T4G](#) [NTE123AP-10](#) [NTE153MCP](#) [NTE16](#)
[NTE195A](#) [NTE92](#) [C4460](#) [2N4401-A](#) [2N6728](#) [2SA1419T-TD-H](#) [2SA2126-E](#) [2SB1204S-TL-E](#) [2SC2712S-GR,LF](#) [2SC5488A-TL-H](#)
[2SD2150T100R](#) [SP000011176](#) [2N2907A](#) [2N3904-NS](#) [2N5769](#) [2SC2412KT146S](#) [2SD1816S-TL-E](#) [CPH6501-TL-E](#) [MCH4021-TL-E](#)
[MJE340](#) [US6T6TR](#) [NJL0281DG](#) [732314D](#) [CPH3121-TL-E](#) [CPH6021-TL-H](#) [873787E](#) [IMZ2AT108](#) [UMX21NTR](#) [MCH6102-TL-E](#)
[NJL0302DG](#) [2N3583](#) [30A02MH-TL-E](#) [NSV40301MZ4T1G](#) [NTE13](#) [NTE26](#) [NTE282](#) [NTE323](#) [NTE350](#) [NTE81](#) [STX83003-AP](#)