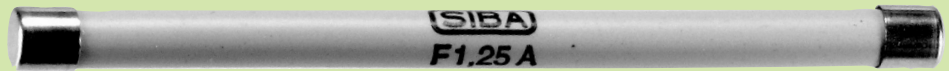
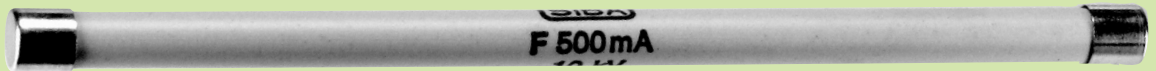


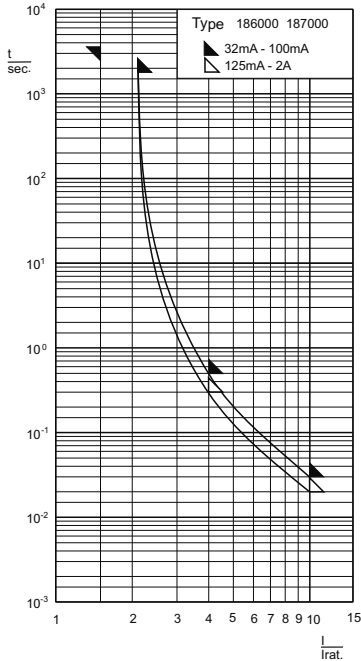
Type
186000



Type
187000



Zeit/Strom-Kennlinien
Time-Current Characteristics



Aufbau / Construction

Keramikrohr / ceramic tube

undurchsichtig / non-transparent

Kontaktkappen / end caps

Messing, vernickelt / brass, nickel-plated

Zubehör / Related Products

Halter / holder

siehe Seite 89 / see page 89

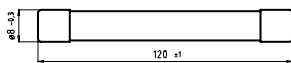
Schmelzeitgrenzwerte / Fusing time limits

Bemessungsstrom Rated Current	1,5 I _n		2,1 I _n		4 I _n		10 I _n	
	min.	max.	min.	max.	min.	max.	min.	max.
32 mA - 100 mA	1 h	-	-	30 min	-	500 ms	-	30 ms
125 mA - 4 A (Type 186000)	1 h	-	-	30 min	-	300 ms	-	20 ms
125 mA - 2 A (Type 187000)	1 h	-	-	30 min	-	300 ms	-	20 ms

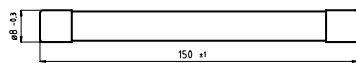
DIN 41683 DIN 41684	8 x 120 mm 8 x 150 mm	6 kV 10 kV	M mittelträge / med. time-lag F flink / quick acting
------------------------	--	---------------	---

Abmessungen
Dimensions

186000



187000



Artikel-Nr. Article-no.	Artikel-Nr. Article-no.	Bemessungs- strom Rated Current	Bemessungs- Ausschaltvermögen Rated Breaking Capacity	Spannungsfall 186000 Voltage Drop	Spannungs- fall 187000 Voltage Drop	Charakte- ristik Characte- ristics
				mV max.	mV max.	
186000.0,032	187000.0,032	32 mA	¹⁾	6000	14000	M
186000.0,05	187000.0,05	50 mA	¹⁾	4400	8500	M
186000.0,063	187000.0,063	63 mA	¹⁾	3800	6500	M
186000.0,08	187000.0,08	80 mA	¹⁾	3200	5000	M
186000.0,1	187000.0,1	100 mA	¹⁾	2900	4000	M
186000.0,125	187000.0,125	125 mA	¹⁾	22000	27000	F
186000.0,16	187000.0,16	160 mA	¹⁾	19000	24000	F
186000.0,2	187000.0,2	200 mA	¹⁾	16000	21000	F
186000.0,25	187000.0,25	250 mA	¹⁾	14000	18500	F
186000.0,315	187000.0,315	315 mA	¹⁾	12000	17000	F
186000.0,4	187000.0,4	400 mA	¹⁾	5000	6000	F
186000.0,5	187000.0,5	500 mA	¹⁾	2300	2900	F
186000.0,63	187000.0,63	630 mA	¹⁾	2000	2700	F
186000.0,8	187000.0,8	800 mA	¹⁾	1900	2400	F
186000.1	187000.1	1 A	¹⁾	1800	2100	F
186000.1,25	187000.1,25	1,25 A	¹⁾	1400	1800	F
186000.1,6	187000.1,6	1,6 A	¹⁾	1300	1600	F
186000.2	187000.2	2 A	¹⁾	1100	1400	F
186000.2,5	-	2,5 A ²⁾	¹⁾	³⁾	-	F
186000.3,15	-	3,15 A ²⁾	¹⁾	³⁾	-	F
186000.4	-	4 A ²⁾	¹⁾	³⁾	-	F

¹⁾ 186000: 35 A @ AC 6 kV

187000: 35 A @ AC 10 kV

²⁾ zusätzlich lieferbare Bemessungsströme / Non-standard ratings also available

³⁾ auf Anfrage / On request

Type	Abk. Abbr.	Beschreibung Description
	-	25 Stück / Pieces

X-ON Electronics

Largest Supplier of Electrical and Electronic Components

Click to view similar products for [Cartridge Fuses](#) category:

Click to view products by [Siba](#) manufacturer:

Other Similar products are found below :

[MBO-20](#) [MDA-V-1/100](#) [12C10X38GI](#) [AGA-V-2-1/2](#) [AGC-V-3-12-R](#) [AGY-50](#) [MSL-3](#) [MSL-4](#) [MSL-5](#) [BK1/C436-2A](#) [BK1-GMA-1-6-R](#)
[BK1-GMA-200-R](#) [BK1GMA-6-R](#) [BK1/GMC-100-R](#) [BK1/GMC-1.5-R](#) [BK1-GMC-2-5-R](#) [BK1GMD-4-R](#) [BK1S500-250-R](#) [BK1S500-32-R](#)
[BK1-S500-4-R](#) [BK1S500-5-R](#) [BK1-S505-1-R](#) [BK1-S506-2-R](#) [BK1-S506-3-15-R](#) [BK1/S506-63-R](#) [BK/ABC-5RX](#) [BK/AGW-B-4](#) [BK/AVX-](#)
[1/4](#) [BK/C515S-250-R](#) [BK/MBO-20](#) [BK/MBO-8](#) [BK/MDM-3/4](#) [BK-MDQ-4](#) [BK/S505-V-2.5A](#) [BK/TDC120-15](#) [BK/TDC120-20](#)
[BK/TDC122-45](#) [BP/MDL-7](#) [1C10X38AM](#) [S505-V-500MA](#) [SEF-1697-1-002](#) [AGA-V-7-1/2](#) [AGC-15WX](#) [AGC-2-1-2-R](#) [20.0M6.3X32F](#)
[20C8X32GI](#) [GMC-50-R](#) [361.250](#) [MBO-8](#) [TDC121-30](#)