



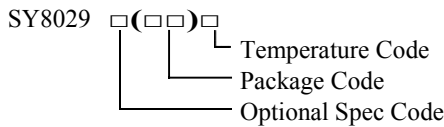
# Application Note: AN\_SY8029

## High Efficiency 2MHz, Dual 2A Synchronous Step Down Regulator

### General Description

The SY8029 is a dual-output, high efficiency 2MHz synchronous step down DC-DC regulator IC, capable of delivering up to 2A output current each output channel. The SY8029 operates over a wide input voltage range from 2.5V to 5.5V and integrates main switch and synchronous switch with very low  $R_{DS(ON)}$  to minimize the conduction loss.

### Ordering Information



Ordering Number	Package type	Note
SY8029AIC	TSOT23-8	--

### Features

- Input range: 2.5V to 5.5V input voltage
- 2MHz switching frequency
- 180° out of phase operation
- Output current: 2A per channel
- Low Quiescent Current: <45uA for both channels
- Low  $R_{DS(ON)}$  for internal switches (PFET/NFET): 125mΩ/100mΩ
- Internal soft-start
- 100% dropout operation
- RoHS Compliant and Halogen Free
- Compact package: TSOT23-8

### Applications

- SSD
- Cell Phones
- Digital Cameras
- PDAs
- Portable Media Players

### Typical Applications

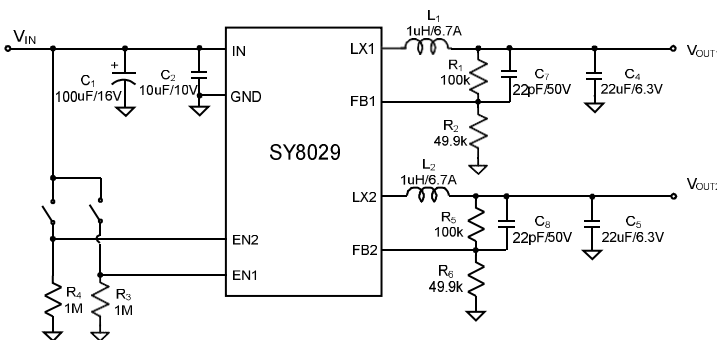


Figure 1. Schematic Diagram

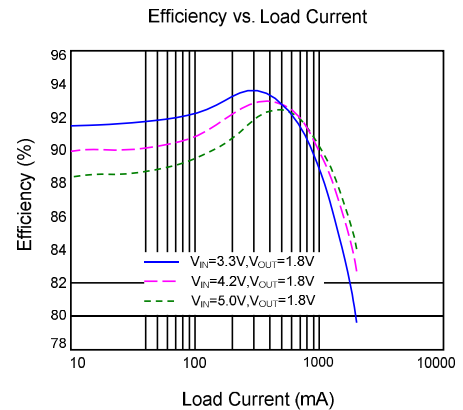
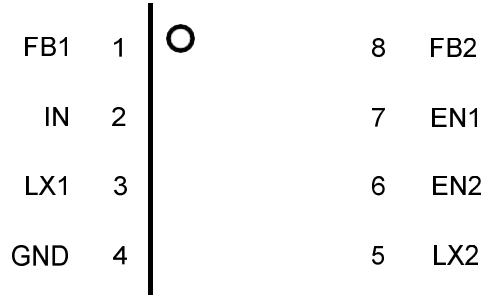


Figure 2. Efficiency vs. Load Current



### Pinout (top view)



Top Mark: ZY.xyz (Device code: ZY; x=year code, y=week code, z= lot number code)

Pin Name	Pin Number	Pin Description
FB2	8	Feedback pin for output2. Connect this pin to the center point of the output resistor divider (as shown in Figure 1) to program the output2 voltage: $V_{OUT2}=0.6V*(1+R_{H2}/R_{L2})$
IN	2	Power input pin. Decouple this pin to ground pin at least 10uF ceramic cap
FB1	1	Feedback pin for output1. Connect this pin to the center point of the output resistor divider (as shown in Figure 1) to program the output1 voltage: $V_{OUT1}=0.6V*(1+R_{H1}/R_{L1})$
LX1	3	Inductor pin for output1. Connect this pin to the switching node of inductor.
EN1	7	Enable pin for output1. Do not leave it floating.
EN2	6	Enable pin for output2. Do not leave it floating.
LX2	5	Inductor pin for output2. Connect this pin to the switching node of inductor.
GND	4	Ground pins.

### Absolute Maximum Ratings (Note 1)

All pins----- V  
Power Dissipation, P<sub>D</sub> @ T<sub>A</sub> = 25°C ,TSOT23-8----- 1.7W  
Package Thermal Resistance (Note 2)  
    θ<sub>JA</sub>----- 60°C /W  
    θ<sub>JC</sub>----- 15°C /W  
Junction Temperature Range-----150°C  
Lead Temperature (Soldering, 10 sec.)----- 260°C  
Storage Temperature Range-----65°C to 150°C

### Recommended Operating Conditions (Note 3)

Supply Input Voltage----- 2.5V to 5.5V  
Enable, FB Voltage-----V<sub>IN</sub>+0.3V  
Junction Temperature Range----- 40°C to 125°C  
Ambient Temperature Range----- 40°C to 85°C



## Electrical Characteristics

( $V_{IN}=5V$ ,  $V_{OUT1}=V_{OUT2}=2.5V$ ,  $L_1=L_2=1.0\mu H$ ,  $C_{OUT1}=C_{OUT2}=22\mu F$ ,  $T_A = 25^\circ C$  unless otherwise specified)

Parameter	Symbol	Test Conditions	Min	Typ	Max	Unit
Input Voltage Range	$V_{IN}$		2.5		5.5	V
Shutdown Current	$I_{SHDN}$	EN1=EN2=0		0.1	1	$\mu A$
Quiescent Current	$I_Q$	EN1=1 or EN2=1, $I_{OUT1}=I_{OUT2}=0$ , no switching		35		$\mu A$
		EN1=1 and EN2=1, $I_{OUT1}=I_{OUT2}=0$ , no switching		45		$\mu A$
Input UVLO Threshold	$V_{UVLO}$				2.5	V
UVLO Hysteresis	$V_{HYS1}$			0.2		V
Oscillator Frequency	$f_{OSC}$	$I_{OUT1} = 0.1A$ , $I_{OUT2} = 0.1A$		2.0		MHz
Thermal Shutdown Temperature	$T_{SD}$			150		$^\circ C$
Thermal Shutdown Hysteresis	$T_{HYS}$			20		$^\circ C$
Feedback Reference Voltage	$V_{REF1}$ , $V_{REF2}$		0.588	0.600	0.612	V
PFET $R_{ON}$	$R_{DS(ON),P1}$ $R_{DS(ON),P2}$			125		$m\Omega$
NFET $R_{ON}$	$R_{DS(ON),N1}$ $R_{DS(ON),N2}$			100		$m\Omega$
PFET Current Limit	$I_{LIM1}$ , $I_{LIM1}$		2.8			A
EN Rising Threshold	$V_{ENH1}$ , $V_{ENH1}$		1.2			V
EN Falling Threshold	$V_{ENL1}$ , $V_{ENL1}$				0.4	V
Internal Soft Start Time	$t_{SS1}$ , $t_{SS2}$			1		ms

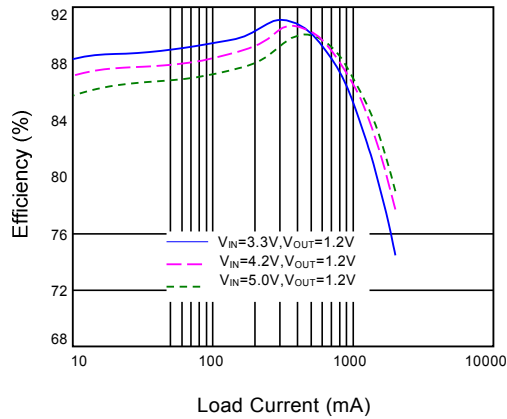
**Note 1:** Stresses beyond the “Absolute Maximum Ratings” may cause permanent damage to the device. These are for stress ratings. Functional operation of the device at these or any other conditions beyond those indicated in the operational sections of the specifications is not implied. Exposure to absolute maximum rating conditions for extended periods may remain possibility to affect device reliability.

**Note 2:**  $\theta_{JA}$  is measured in the natural convection at  $T_A = 25^\circ C$  on a low effective single layer thermal conductivity test board of JEDEC 51-3 thermal measurement standard.

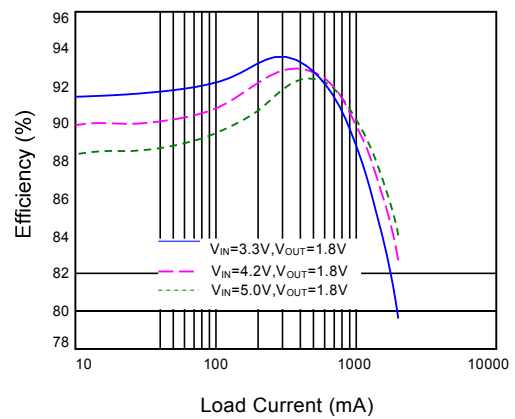
**Note 3:** The device is not guaranteed to function outside its operating conditions.

## Typical Performance Characteristics

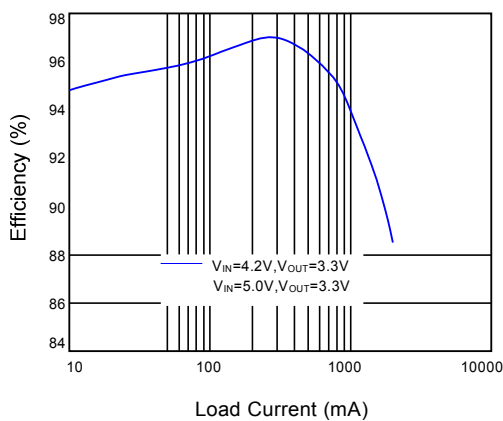
Efficiency vs. Load Current



Efficiency vs. Load Current

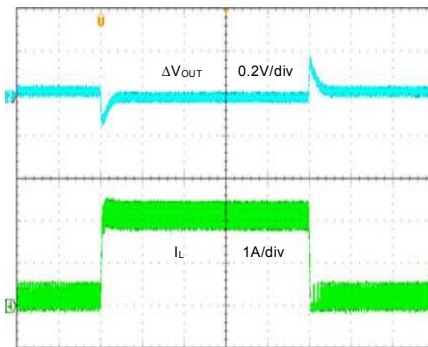


Efficiency vs. Load Current



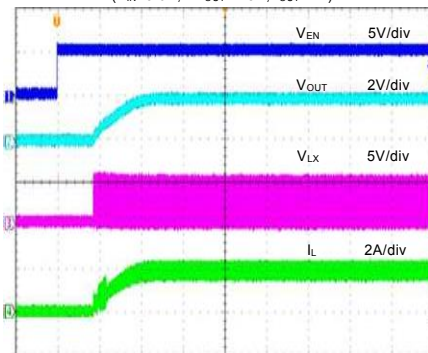
Load Transient

( $V_{IN}=5.0V, V_{OUT}=1.8V, I_{OUT}=0.2-2A$ )



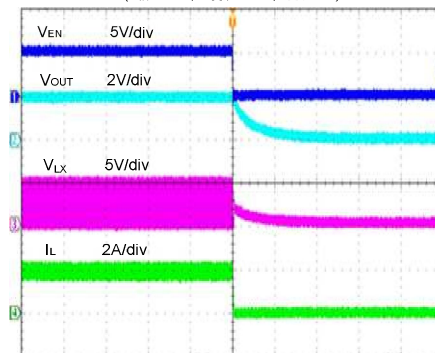
Startup from Enable

( $V_{IN}=5.0V, V_{OUT}=1.8A, I_{OUT}=2A$ )



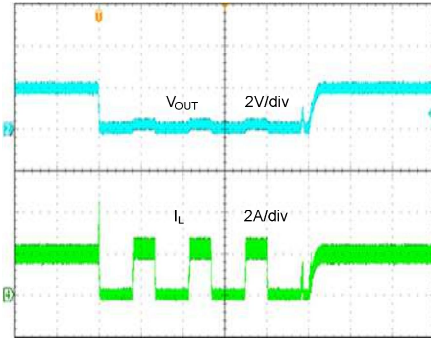
Shutdown from Enable

( $V_{IN}=5.0V, V_{OUT}=1.8A, I_{OUT}=2A$ )



### Short Circuit Protection

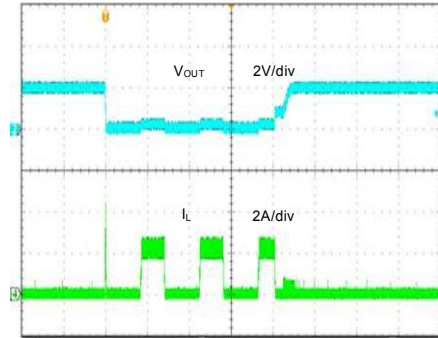
( $V_{IN}=5.0V$ ,  $V_{OUT}=1.8V$ ,  $I_O=2.0A \sim$  short)



Time (2ms/div)

### Short Circuit Protection

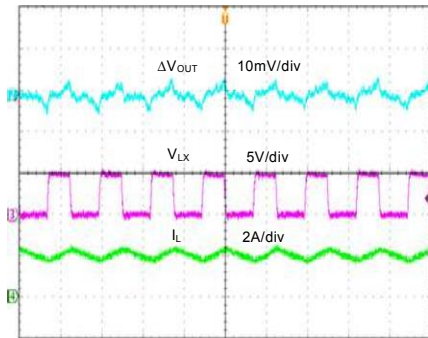
( $V_{IN}=5.0V$ ,  $V_{OUT}=1.8V$ ,  $I_O=0A \sim$  short)



Time (2ms/div)

### Output Ripple

( $V_{IN}=5.0V$ ,  $V_{OUT}=1.8V$ ,  $I_O=2.0A$ )



Time (400ns/div)



## Operation

The SY8029 is a dual-output, high efficiency 2MHz synchronous step down DC-DC regulator IC, capable of delivering up to 2A output current each output channel. The SY8029 operates over a wide input voltage range from 2.5V to 5.5V and integrate main switch and synchronous switch with very low  $R_{DS(ON)}$  to minimize the conduction loss.

## Applications Information

Because of the high integration in the SY8029 IC, the application circuit based on this regulator IC is rather simple. Only input capacitor  $C_{IN}$ , output capacitor  $C_{OUT}$ , output inductor L and feedback resistors (R1 and R2) need to be selected for the targeted applications specifications.

### Feedback resistor dividers R1 and R2:

Choose R1 and R2 to program the proper output voltage. To minimize the power consumption under light loads, it is desirable to choose large resistance values for both R1 and R2. A value of between 100k and 1M is highly recommended for both resistors. If R2=120k is chosen, then R1 can be calculated to be:

$$R1 = \frac{(V_{OUT} - 0.6V) \cdot (R2)}{0.6V}$$

### Input capacitor $C_{IN}$ :

This ripple current through input capacitor is calculated as:

$$I_{CIN\_RMS} = I_{OUT} \times \sqrt{D(1-D)}$$

This formula has a maximum at  $V_{IN}=2V_{OUT}$  condition, where  $I_{CIN\_RMS}=I_{OUT}/2$ . This simple worst-case condition is commonly used for DC/DC design.

With the maximum load current at 2.0A. A typical X5R or better grade ceramic capacitor with 10V rating and greater than 10uF capacitance can handle this ripple current well. To minimize the potential noise problem, ceramic capacitor should be placed really close to the  $V_{IN}$  and GND pins. Care should be taken to minimize the loop area formed by  $C_{IN}$ , and  $V_{IN}/GND$  pins.

### Output capacitor $C_{OUT}$ :

The output capacitor is selected to handle the output ripple noise requirements. Both steady state ripple and transient requirements must be taken into consideration when selecting this capacitor. For the best performance,

it is recommended to use X7R or better grade ceramic capacitor with 6V rating and greater than 10uF capacitance.

### Output inductor L:

There are several considerations in choosing this inductor.

- 1) Choose the inductance to provide the desired ripple current. It is suggested to choose the ripple current to be about 40% of the maximum output current. The inductance is calculated as:

$$L = \frac{V_{OUT}(1 - V_{OUT}/V_{IN,MAX})}{F_{SW} \times I_{OUT,MAX} \times 40\%}$$

where  $F_{sw}$  is the switching frequency and  $I_{out,max}$  is the maximum load current.

The SY8029 regulator IC is quite tolerant of different ripple current amplitude. Consequently, the final choice of inductance can be slightly off the calculation value without significantly impacting the performance.

- 2) The saturation current rating of the inductor must be selected to be greater than the peak inductor current under full load conditions.

$$I_{SAT,MIN} > I_{OUT,MAX} + \frac{V_{OUT}(1 - V_{OUT}/V_{IN,MAX})}{2 \cdot F_{SW} \cdot L}$$

- 3) The DCR of the inductor and the core loss at the switching frequency must be low enough to achieve the desired efficiency requirement. It is desirable to choose an inductor with  $DCR < 50m\Omega$  to achieve a good overall efficiency.

### Load Transient Considerations:

The SY8029 regulator IC integrates the compensation components to achieve good stability and fast transient responses. In some applications, adding a 22pF ceramic cap in parallel with R1 may further speed up the load transient responses and is thus recommended for applications with large load transient step requirements.

### Layout Design:

The layout design of SY8029 regulator is relatively simple. For the best efficiency and minimum noise problems, we should place the following components close to the IC:  $C_{IN}$ , L,  $R_H$  and  $R_L$ .

- 1) It is desirable to maximize the PCB copper area connecting to GND pin to achieve the best thermal and noise performance. If the board space allowed, a ground plane is highly desirable. Reasonable vias are

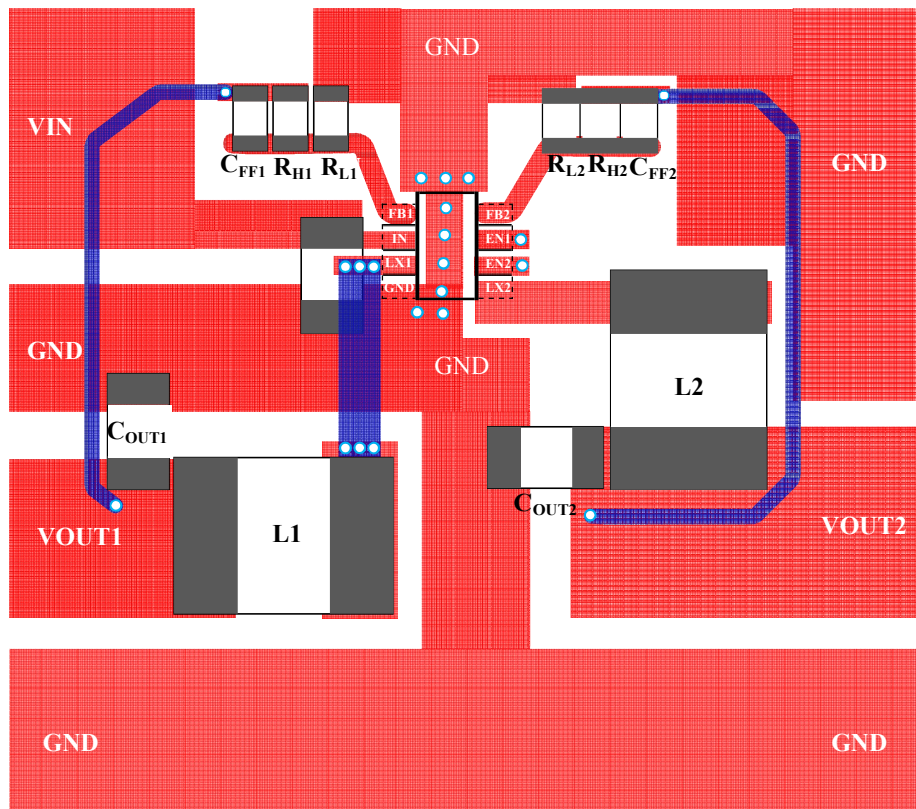
suggested to be placed underneath the ground pad to enhance the soldering quality and thermal performance.

2) Input cap must be close to Pins IN and GND. The loop area formed by input cap, IN, GND must be minimized.

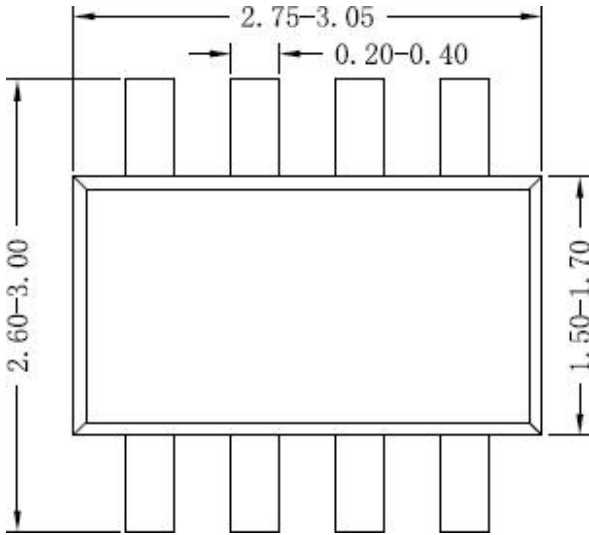
3) The PCB copper area associated with LX pin must be minimized to avoid the potential noise problem. For the smallest loop area of  $C_{IN}$ , IN and GND, LX pin copper can pour area on internal or bottom layer.

4) The components  $R_H$  and  $R_L$ , and the trace connecting to the FB pin must NOT be adjacent to the LX net on the PCB layout to avoid the noise problem.

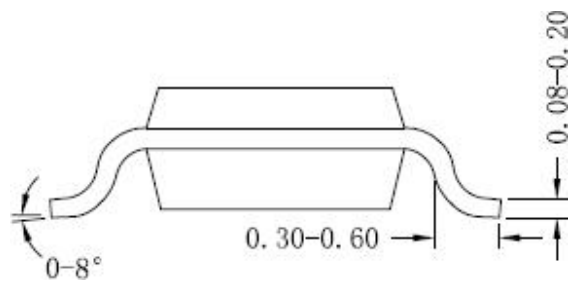
5) If the system chip interfacing with the EN pin has a high impedance state at shutdown mode and the IN pin is connected directly to a power source such as a Li-Ion battery, it is desirable to add a pull down 1Mohm resistor between the EN and GND pins to prevent the noise from falsely turning on the regulator at shutdown mode.



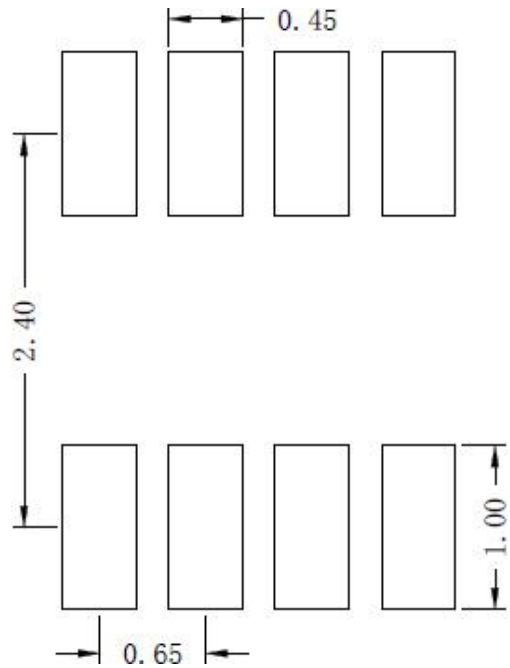
### TSOT23-8 Package Outline Drawing



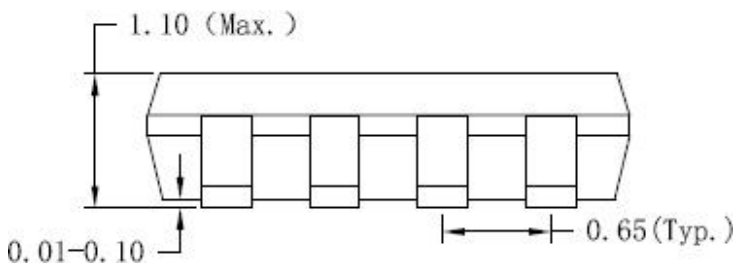
**Top view**



**Side view A**



**Recommended PCB layout  
(Reference only)**



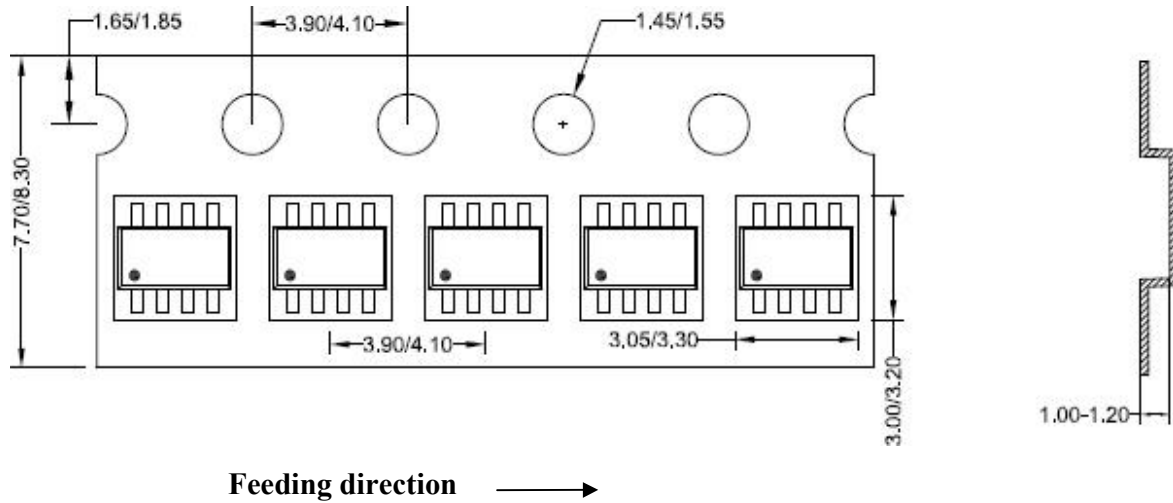
**Side view B**

**Notes:** All dimension in MM and exclude mold flash & metal burr

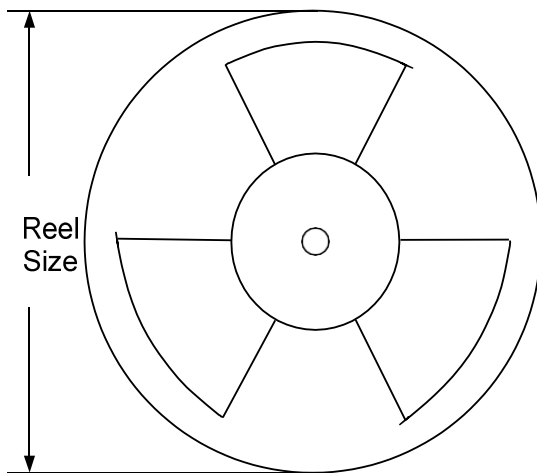


## Taping & Reel Specification

### 1. TSOT23-8 taping orientation



### 2. Carrier Tape & Reel specification for packages



Package type	Tape width (mm)	Pocket pitch(mm)	Reel size (Inch)	Trailer length(mm)	Leader length (mm)	Qty per reel
TSOT23-8	8	4	7	400	160	3000

### 3. Others: NA

## X-ON Electronics

Largest Supplier of Electrical and Electronic Components

*Click to view similar products for [Isolated DC/DC Converters](#) category:*

*Click to view products by [Silergy](#) manufacturer:*

Other Similar products are found below :

[FMD15.24G](#) [PSL486-7LR](#) [Q48T30020-NBB0](#) [18362](#) [JAHW100Y1](#) [SPB05C-12](#) [SQ24S15033-PS0S](#) [19-130041](#) [CE-1003](#) [CE-1004](#)  
[RDS180245](#) [MAU228](#) [J80-0041NL](#) [DFC15U48D15](#) [XGS-1205](#) [NCT1000N040R050B](#) [SPB05B-15](#) [SPB05C-15](#) [L-DA20](#) [DCG40-5G](#)  
[QME48T40033-PGB0](#) [AK1601-9RT](#) [DPA423R](#) [VI-R5022-EXWW](#) [PSC128-7iR](#) [RPS8-350ATX-XE](#) [DAS1004812](#) [PQA30-D24-S24-DH](#) [vi-](#)  
[m13-cw-03](#) [VI-LN2-EW](#) [VI-PJW01-CZY](#) [CK2540-9ERT](#) [AK-1615-7R](#) [700DNC40-CON-KIT-8G](#) [350DNC40-CON-KIT-9G](#) [088-101348-G](#)  
[VI-L52-EW](#) [VI-L53-CV](#) [PQA30-D48-S12-TH](#) [VI-L50-IY](#) [VI-LC63-EV](#) [AM2D-051212DZ](#) [24IBX15-50-0ZG](#) [HZZ01204-G](#) [SPU02L-09](#)  
[SPU02M-09](#) [SPU02N-09](#) [UNO-PS/350-900DC/24DC/60W](#) [QUINT4-BUFFER/24DC/20](#) [QUINT4-CAP/24DC/5/4KJ](#)