



Product Number: SM5822

## HIGHLIGHTS

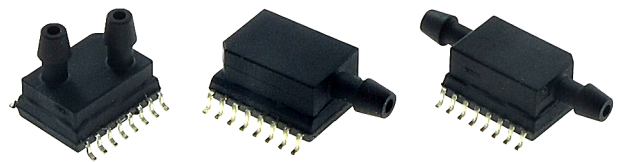
- Pressure calibrated and temperature compensated outputs
- Both amplified analog and I<sup>2</sup>C digital interface
- For differential, gauge & absolute pressure measurement
- JEDEC SOIC-16 package
- Two pressure ranges available: 15 PSI (103 kPa) and 60 PSI (414 kPa) Full-Scale
- Evaluation kit available
- Compact size

## TYPICAL APPLICATIONS

- Medical Instrumentation  
Suction Equipment
- Blood Pressure Monitoring
- Pneumatic Control
- Gas Flow
- Barometric Measurement
- Altimeters
- Vacuum Applications

## TECHNICAL FEATURES

- Amplified, calibrated, fully signal-conditioned output span of 4.0 VDC full-scale
- Multi-order correction for pressure non-linearity and temperature coefficient of span and offset
- Gauge measurement with single and dual port (single-ended) offering
- Ratiometric output with supply voltage
- Compensated temperature range from 0° to 85°C
- RoHS Compliant
- Available in tape & reel



## DESCRIPTION

The Silicon Microstructures SM5822 series of OEM pressure sensors combines state-of-the-art pressure sensor technology with CMOS mixed signal processing technology to produce an amplified, fully conditioned, multi-order pressure and temperature compensated sensor in a small SO16 plastic package.

The monolithically-integrated pressure sensor with a dedicated custom signal conditioning ASIC combined on a single die minimizes the size and simplifies the use of advanced silicon micromachined pressure sensors. The pressure sensor can be mounted directly to a standard printed circuit board and an amplified, high-level, calibrated pressure signal can be acquired from the digital interface or analog output. This eliminates the need for additional circuitry, such as a compensation network or micro-controller containing a custom correction algorithm. An evaluation kit for directly reading out the digital sensor signals is available.

The SM5822 Series pressure sensors are based on SMI's highly stable, piezoresistive pressure sensor chips mounted into a SO16 plastic package.

The model SM5822 is designed for operating pressure ranges at 15 PSI (103 kPa) and 60 PSI (414 kPa).



Product Number: SM5822

## ABSOLUTE MAXIMUM RATING TABLE FOR SM5822

All parameters are specified at VSUPPLY = 5.00 V DC supply at room temperature, unless otherwise noted.

No.	Characteristic	Symbol	Minimum	Typical	Maximum	Units
1	Excitation Voltage <sup>(a, b)</sup>	V <sub>SUPPLY</sub>	4.75	5.00	5.25	V
2	Current Consumption <sup>(c)</sup>	I <sub>SUPPLY</sub>		6	10	mA
3	Proof Pressure <sup>(d, e)</sup>	P <sub>PROOF</sub>	3x		90	P <sub>RANGE</sub>
4	Burst Pressure <sup>(d, e, s)</sup>	P <sub>BURST</sub>	5x		90	PSI
5	Operating Temperature <sup>(f)</sup>	T <sub>OP</sub>	-40		+125	°C
6	Storage Temperature <sup>(f)</sup>	T <sub>STG</sub>	-40		+150	°C
7	Media Compatibility <sup>(f, g)</sup>					

## OPERATING CHARACTERISTICS FOR SM5822 - SPECIFICATIONS

All parameters are specified at VSUPPLY = 5.00 V DC supply at room temperature, unless otherwise noted.

### Absolute, Gauge & Single-Ended<sup>(h)</sup> Pressure Sensors

No.	Characteristic	Symbol	Minimum	Typical	Maximum	Units
8	Span (FS P <sub>RANGE</sub> ) <sup>(a, b, d, e, i, j)</sup>	V <sub>SPAN</sub>	3.92	4.00	4.08	V
9	Zero Offset <sup>(j, k, l)</sup>	V <sub>ZERO</sub>	0.42	0.50	0.58	V
10	Calibration Accuracy <sup>(f, m)</sup>	ACC <sub>Cal</sub>	-1		1	%FS
11	Pressure Response Time <sup>(f, n)</sup>	t <sub>RESP</sub>		2		ms
12	Warm-up Deviation <sup>(f, o)</sup>	ACC <sub>WUP</sub>		0.4		%FS
13	Linearity <sup>(p)</sup>	NL	-1	0.5	1	%FS
14	Compensated Temp. Range	T <sub>COMP</sub>	0		85	°C
15	Accuracy after Stress, dry <sup>(f, q)</sup>	ACC <sub>Dry</sub>			2	%FS
16	Accuracy after Stress, humid <sup>(f, r)</sup>	ACC <sub>Humid</sub>			3	%FS

### Differential<sup>(b)</sup> Pressure Sensors

No.	Characteristic	Symbol	Minimum	Typical	Maximum	Units
17	Span (FS P <sub>RANGE</sub> ) <sup>(a, b, d, e, i, j)</sup>	V <sub>SPAN</sub>	1.96	2.00	2.04	V
18	Zero Offset <sup>(j, k, l)</sup>	V <sub>ZERO</sub>	2.42	2.50	2.58	V
19	Calibration Accuracy <sup>(f, m)</sup>	ACC <sub>Cal</sub>	-1		1	%FS
20	Pressure Response Time <sup>(f, n)</sup>	t <sub>RESP</sub>		2		ms
21	Warm-up Deviation <sup>(f, o)</sup>	ACC <sub>WUP</sub>		0.4		%FS
22	Linearity <sup>(p)</sup>	NL	-1	0.5	1	%FS
23	Compensated Temp. Range	T <sub>COMP</sub>	0		85	°C
24	Accuracy after Stress, dry <sup>(f, q)</sup>	ACC <sub>Dry</sub>			2	%FS
25	Accuracy after Stress, humid <sup>(f, r)</sup>	ACC <sub>Humid</sub>			3	%FS

## QUALIFICATION STANDARDS

→ For qualification specifications, please contact Sales at sales@si-micro.com

### Digital Interface Information

For digital interface guidelines and recommendations, please refer to Application Note: AN01 – 10.

---

**Product Number: SM5822**

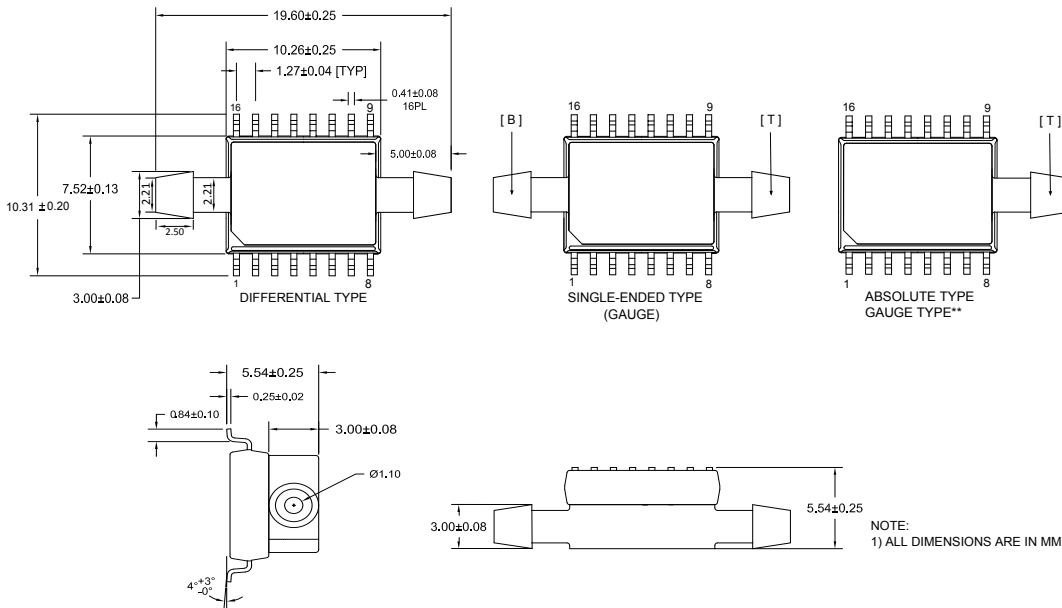
---

## NOTES:

- (a) Specified parameters will not be met unless supply voltage is 5.00 V.
- (b) A 100 nF filter capacitor (capacitor type: X7R or X2Y) must be placed between VDD and GND in a maximum distance of 5 mm. See wiring diagram for optimal signal conditioning of the pressure device.
- (c) Operating values for the current consumption. The current draw may be higher upon power-up of the device.
- (d) For the SM5822 series the specified values apply for positive (top side) pressure only.
- (e) The output voltage value will saturate at about 4.75 V for applied pressure above the rated full-scale.
- (f) Tested on a sample basis.
- (g) Clean, dry gas compatible with wetted materials. Wetted materials include Pyrex glass, silicon, alumina ceramic, epoxy, RTV, gold, aluminum, and nickel.
- (h) Single-ended parts (pressure type - S) have 2 ports and are for higher gain differential applications, where the differential pressure is always positive.
- (i) Full-scale (FS) is defined as zero pressure to rated pressure; differential parts can be used  $\pm$ FS. Gauge zero output is 0.5 V, typical, and full-scale output is typically 4.5 V. Span is the difference between full-scale output and zero output, (typical 4 V). For differential parts, the negative full-scale is typically at 0.5 V, zero is typically 2.5 V, and positive (topside) full-scale is 4.5 volts, typical, to give a span of  $\pm$ 2.0 V, typical.
- (j) Specified values are given for the complete operational temperature range.
- (k) External mechanical stresses and mounting position can affect the zero pressure output reading.
- (l) The output offset voltage value will saturate at about 0.25 V for applied pressure below the pressure-type related minimum pressure value.
- (m) The calibration accuracy is a value given for the maximum deviation of the sensor output from an assumed, ideally behaving sensor. The value in the table is given for the compensated temperature range. For temperatures outside the compensated, but within the operating temperature range, the deviation increases by an additional 1%FS.
- (n) The pressure response time is the amount of time which the ASIC needs to update the pressure values within the internal registers.
- (o) The warm-up deviation is the deviation from the calibration accuracy (l) of the output values upon each biasing of the device at supply voltage over a period of the first 60 seconds.
- (p) The non-linearity calculation uses the "best-fit-straight-line" (BFSL) approach.
- (q) This accuracy is the result after a 1000h high-temperature-over-life stress test (125 °C). During this time frame, the sensor was mechanically stressed with 1.5 million pressure cycles. The given accuracy value is the the maximum deviation of the sensor output from an assumed, ideally behaving sensor. The value in the table is given for the compensated temperature range. For temperatures outside the compensated, but within the operating temperature range, the deviation increases by an additional 1%FS.
- (r) This accuracy is the result after a 500h temperature-humidity-biased stress test (85% rH at 85 °C). The given accuracy value is the maximum deviation of the sensor output from an assumed, ideally behaving sensor. The value in the table is given for the compensated temperature range. For temperatures outside the compensated, but within the operating temperature range, the deviation increases by an additional 1%FS.
- (s) Minimum burst pressure of SO16 package is 90 PSI (6 Bar).

Product Number: SM5822

## Package Dimensions & Pin-Out



PIN	DESCRIPTION
1	NC
2	NC
3	SDA
4	SCL
5	NC
6	NC
7	NC
8	NC
9	NC
10	NC
11	NC
12	GND
13	VDD
14	NC
15	NC
16	ANALOG OUT

### NOTES:

- Do not connect to NC pins.
- External connections to NC pins will cause part malfunction.
- Tolerance on all dimensions  $\pm 0.13$  mm unless otherwise specified.
- [B] is tube connected to bottom side of sensor die.
- [T] is tube connected to top side of sensor die. For correct sensor output pressure needs to be connected to this port.

## Ordering information

Order Code*	Pressure Type	Full-Scale Pressure Range	Nozzle/port Configuration
5822-015-A-B	Absolute	15 PSI / 103 kPa	Single
5822-015-D-B	Differential	15 PSI / 103 kPa	Dual
5822-015-G-B	Gauge	15 PSI / 103 kPa	Single
5822-015-S-B	Single-ended (Gauge)	15 PSI / 103 kPa	Dual
5822-060-A-B	Absolute	60 PSI / 414 kPa	Single

### NOTES:

- \* Standard shipping method is in tube format.
- \*\* For single-ported gauge type, please contact Sales.

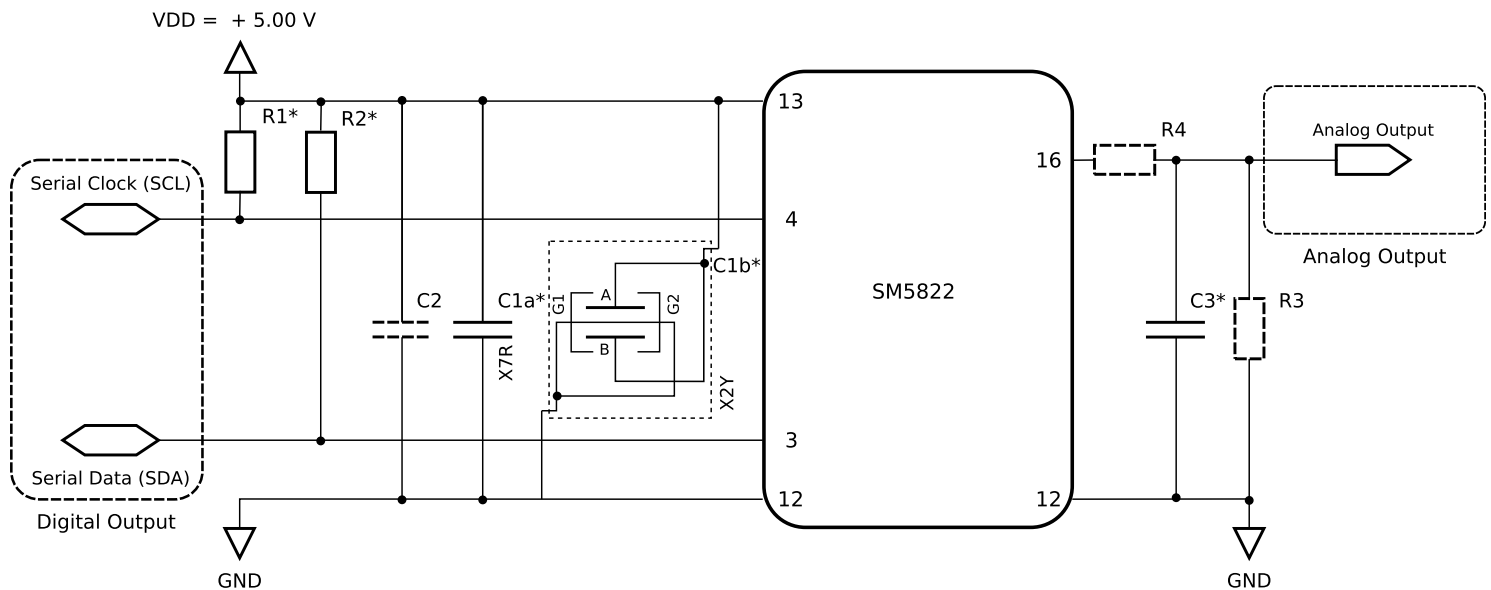
For samples please contact sales@si-micro.com

Product Number: SM5822

## Wiring Diagrams

- VDD The optimum operation value for the power supply is 5 V.
- R1/R2 Pull-up resistors for the digital data lines. Recommended resistor values are 10 to 100 kOhm.
- C1a/C1b Buffer capacitor. For best performance of the sensor output signals it is obligatory to use a 100 nF buffer capacitor between the supply pins VDD and GND of the sensor device. SMI recommends high quality capacitors, such as X7R or X2Y. The maximum distance between the package supply pins and this capacitor should be no more than 5 mm. Usually this buffer capacitor is sufficient, but in connection with a poor power supply and to reduce power consumption a reload capacitor (C2) of min. 1  $\mu$ F is advised. In this case, SMI recommends using ceramic capacitors of 47  $\mu$ F.
- C3 Capacitive load of the analog output. The capacitive load should be between 15 nF to 33 nF (recommended: 22 nF) with a resistor (optional: R3) of min. 3 kOhm. For a chosen lower capacitive load of 1 nF to 15 nF the resistor value should be at least 6.8 kOhm.
- R4 Optional resistor for low-pass filtering (in lieu of R3) of the analog output. The recommended resistor value is: 4.7 kOhm

\* Obligatory components for best performance of pressure sensor device.



Product Number: SM5822

---

## Silicon Microstructures Warranty and Disclaimer:

Silicon Microstructures, Inc. reserves the right to make changes without further notice to any products herein and to amend the contents of this data sheet at any time and at its sole discretion.

Information in this document is provided solely to enable software and system implementers to use Silicon Microstructures, Inc. products and/or services. No express or implied copyright licenses are granted hereunder to design or fabricate any silicon-based microstructures based on the information in this document.

Silicon Microstructures, Inc. makes no warranty, representation, or guarantee regarding the suitability of its products for any particular purpose, nor does Silicon Microstructures, Inc. assume any liability arising out of the application or use of any product or silicon-based microstructure, and specifically disclaims any and all liability, including without limitation consequential or incidental damages. "Typical" parameters which may be provided in Silicon Microstructure's data sheets and/or specifications can and do vary in different applications and actual performance may vary over time. All operating parameters, including "Typicals", must be validated for each customer application by customer's technical experts. Silicon Microstructures, Inc. does not convey any license under its patent rights nor the rights of others. Silicon Microstructures, Inc. makes no representation that the circuits are free of patent infringement. Silicon Microstructures, Inc. products are not designed, intended, or authorized for use as components in systems intended for surgical implant into the body, or other applications intended to support or sustain life, or for any other application in which the failure of the Silicon Microstructures, Inc. product could create a situation where personal injury or death may occur. Should Buyer purchase or use Silicon Microstructures, Inc. products for any such unintended or unauthorized application, Buyer shall indemnify and hold Silicon Microstructures, Inc. and its officers, employees, subsidiaries, affiliates, and distributors harmless against all claims, costs, damages, and expenses, and reasonable attorney fees arising out of, directly or indirectly, any claim of personal injury or death associated with such unintended or unauthorized use, even if such claim alleges that Silicon Microstructures, Inc. was negligent regarding the design or manufacture of the part.

Silicon Microstructures, Inc. warrants goods of its manufacture as being free of defective materials and faulty workmanship. Silicon Microstructures, Inc. standard product warranty applies unless agreed to otherwise by Silicon Microstructures, Inc. in writing; please refer to your order acknowledgement or contact Silicon Microstructures, Inc. directly for specific warranty details. If warranted goods are returned to Silicon Microstructures, Inc. during the period of coverage, Silicon Microstructures, Inc. will repair or replace, at its option, without charge those items it finds defective. The foregoing is buyer's sole remedy and is in lieu of all warranties, expressed or implied, including those of merchantability and fitness for a particular purpose. In no event shall Silicon Microstructures, Inc. be liable for consequential, special, or indirect damages.

While Silicon Microstructures, Inc. provides application assistance personally, through its literature and the Silicon Microstructures, Inc. website, it is up to the customer to determine the suitability of the product for its specific application. The information supplied by Silicon Microstructures, Inc. is believed to be accurate and reliable as of this printing. However, Silicon Microstructures, Inc. assumes no responsibility for its use. Silicon Microstructures, Inc. assumes no responsibility for any inaccuracies and/or errors in this publication and reserves the right to make changes without further notice to any products or specifications herein

Silicon Microstructures, Inc.<sup>TM</sup> and the Silicon Microstructures, Inc. logo are trademarks of Silicon Microstructures, Inc. All other service or product names are the property of their respective owners.

© Silicon Microstructures, Inc. 2001-2013. All rights reserved.

## X-ON Electronics

Largest Supplier of Electrical and Electronic Components

*Click to view similar products for [Board Mount Pressure Sensors](#) category:*

*Click to view products by [Silicon Microstructures](#) manufacturer:*

Other Similar products are found below :

[6407-249V-17343P](#) [6407-250V-09273P](#) [80527-25.0H2-05](#) [80541-B00000150-01](#) [80541-B00000200-05](#) [80554-00700100-05](#) [80568-00300050-01](#) [93.631.4253.0](#) [93.731.4353.0](#) [93.932.4553.0](#) [136PC150G2](#) [136PC15A1](#) [142PC95AW71](#) [142PC05DW70](#) [15PSI-G-4V](#) [1805-01A-L0N-B](#) [26PCBKT](#) [26PCCFA6D26](#) [26PCCFS2G](#) [26PCCVA6D](#) [93.632.7353.0](#) [93.731.3653.0](#) [93.931.4853.0](#) [93.932.4853.0](#) [SCDA120-XSC05DC](#) [185PC30DH](#) [20INCH-G-MV-MINI](#) [26PCAFJ3G](#) [26PCCEP5G24](#) [26PCDFA3G](#) [26PCJEU5G19](#) [ASCX15AN-90](#) [TSCSAAN001PDUCV](#) [DCAL401DN](#) [DCAL401GN](#) [XZ202798SSC](#) [XZ203676HSC](#) [6407-249V-09343P](#) [6407-250V-17343P](#) [SP370-25-116-0](#) [81794-B00001200-01](#) [HSCDLNN100PGAA5](#) [82681-B00000100-01](#) [81618-B00000040-05](#) [SSCDJNN015PAAA5](#) [TSCDLNN100MDUCV](#) [TSCSAAN100PDUCV](#) [NBPDANN015PGUNV](#) [NBPLLNS150PGUNV](#) [142PC100D](#)