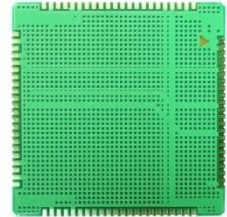


# LTE-FDD/LTE-TDD/HSPA+/TD-SCDMA/EVDO/GSM MODULE



## SIM7600CE

The SIM7600CE is Multi-Band LTE-TDD/LTE-FDD/HSPA+/TD-SCDMA/EVDO and Dual-Band GSM/GPRS/EDGE module solution in a SMT type which supports LTE CAT4 up to 150Mbps for downlink data transfer.

It has strong extension capability with rich interfaces including UART, USB2.0, SPI, I2C, GPIO etc. With abundant application capability like TCP/UDP/FTP/FTPS/HTTP/HTTPS/SMTP/POP3 and MMS, the module provides much flexibility and ease of integration for customer's application.

## Smart Machine Smart Decision

### General features

- Quad-Band TDD-LTE B38/B39/B40/B41
- Tri-Band FDD-LTE B1/B3/B8
- Dual-Band TD-SCDMA B34/B39
- Dual-Band UMTS/HSDPA/HSPA+ B1/B8
- CDMA 1X/EVDO BC0
- GSM/GPRS/EDGE 900/1800 MHz
- Control Via AT Commands
- Supply voltage range: 3.4V~ 4.2V
- Operation temperature: -40°C to +85°C
- Dimension: 30\*30\*2.9 mm
- Weight: 5.5g
- GNSS gpsOne Gen 8B;standalone;assisted,XTRA;

### Specifications for Data transfer

- LTE CAT4
  - Uplink up to 50Mbps,
  - Downlink up to 150Mbps
- TD-SCDMA
  - Uplink up to 128Kbps,
  - Downlink up to 384Kbps
- TD-HSDPA/HSUPA
  - Uplink up to 2.2 Mbps,
  - Downlink up to 2.8 Mbps
- HSPA+
  - Uplink up to 5.76 Mbps,
  - Downlink up to 42 Mbps
- UMTS
  - Uplink/Downlink up to 384Kbps
- EDGE Class
  - Uplink/Downlink up to 236.8Kbps
- GPRS
  - Uplink/Downlink up to 85.6Kbps
- CSD
  - GSM data rate 14.4Kbps
  - WCDMA data rate 57.6Kbps
  - WCDMA 64Kbps CSD for Video call

### Other features

- USB Driver for Microsoft Windows 2000/XP/Vista/Win7/Win8
- USB Driver for Windows CE/Mobile
- USB Driver for Linux /Android
- RIL supporting for Android/Windows CE/Mobile
- Automatic installation for windows
- Linux API SDK
- Firmware update via USB
- TCP/IP/IPV4/V6 Multi-PDP,MT PDP
- FTP/FTPS/HTTP/HTTPS/SMTP/POP3/DNS/MMS
- DTMF
- MBIM to Win8
- Source code of the PC manager of the device for reference

### Interfaces

- USB2.0
- UART
- SIM card
- SPI
- I2C
- Constant current sink
- GPIO
- ADC
- PCM
- SDIO

### Certifications(Plan)

- CCC
- ROHS
- REACH

More about SIMCom SIM7600CE

Please contact:

Tel: 86-21-32523300

Fax: 86-21-32523020

Email: [simcom@sim.com](mailto:simcom@sim.com)

Website: [www.simcomm2m.com](http://www.simcomm2m.com)

## X-ON Electronics

Largest Supplier of Electrical and Electronic Components

*Click to view similar products for [GPS Development Tools](#) category:*

*Click to view products by [Simcom](#) manufacturer:*

Other Similar products are found below :

[SKY65725-11EK1](#) [SKY65728-11EK1](#) [PIM525](#) [1059](#) [1090](#) [1272](#) [MDEV-GNSS-TM](#) [MDEV-GNSS-GM](#) [10-597880-081](#) [3133](#) [MIKROE-2670](#) [MAX2769CEVKIT#](#) [M20048-EVB-1](#) [OM-UE-GPS](#) [LFMISC070550Bulk](#) [M20050-EVB-1](#) [GPS-14030](#) [GPS-14414](#) [ASD2501-R](#) [SIM808](#) [746](#) [10-597160-28D](#) [10-597979-1505](#) [2324](#) [4279](#) [4415](#) [M10578-A2-U1](#) [M10578-A3-U1](#) [AS-RTK2B-F9P-L1L2-NH-02](#) [AS-RTK2B-LIT-L1L2-SMA-00](#) [AS-STARTKIT-BASIC-L1L2-NH-02](#) [AS-STARTKIT-LITE-L1L2-HS-00](#) [AS-STARTKIT-LR-L1L2-EUNH-00](#) [AS-STARTKIT-LR-L1L2-NANH-00](#) [AS-STARTKIT-MCPIE-L1L2-0-00](#) [AS-STARTKIT-MR-L1L2-NH-00](#) [MC20CA-04-STD](#) [BC95-B8](#) [SIM800L](#) [EC20CEHCLG](#) [MINIPCIE-C](#) [SIM7600CE-PCIE](#) [ATGM332D-5N31](#) [ATGM332D-5N11](#) [ECC133151EU](#) [SIM7600CE-L](#) [BC28](#) [BC26](#) [KH1GPC-01](#) [WH-GM35-S-EVK](#) [RA1801.002](#)