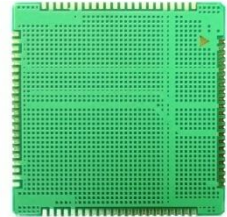


LTE-FDD/LTE-TDD/HSPA+/TD-SCDMA/EVDO/GSM MODULE



SIM7600CE

The SIM7600CE is Multi-Band LTE-TDD/LTE-FDD/HSPA+/TD-SCDMA/EVDO and Dual-Band GSM/GPRS/EDGE module solution in a SMT type which supports LTE CAT4 up to 150Mbps for downlink data transfer.

It has strong extension capability with rich interfaces including UART, USB2.0, SPI, I2C, GPIO etc. With abundant application capability like TCP/UDP/FTP/FTPS/HTTP/HTTPS/SMTP/POP3 and MMS, the module provides much flexibility and ease of integration for customer's application.

Smart Machine Smart Decision

General features

- Quad-Band TDD-LTE B38/B39/B40/B41
- Tri-Band FDD-LTE B1/B3/B8
- Dual-Band TD-SCDMA B34/B39
- Dual-Band UMTS/HSDPA/HSPA+ B1/B8
- CDMA 1X/EVDO BC0
- GSM/GPRS/EDGE 900/1800 MHz
- Control Via AT Commands
- Supply voltage range: 3.4V~ 4.2V
- Operation temperature: -40°C to +85°C
- Dimension: 30*30*2.9 mm
- Weight: 5.5g
- GNSS gpsOne Gen 8B;standalone;assisted,XTRA;

Specifications for Data transfer

- LTE CAT4
 - Uplink up to 50Mbps,
 - Downlink up to 150Mbps
- TD-SCDMA
 - Uplink up to 128Kbps,
 - Downlink up to 384Kbps
- TD-HSDPA/HSUPA
 - Uplink up to 2.2 Mbps,
 - Downlink up to 2.8 Mbps
- HSPA+
 - Uplink up to 5.76 Mbps,
 - Downlink up to 42 Mbps
- UMTS
 - Uplink/Downlink up to 384Kbps
- EDGE Class
 - Uplink/Downlink up to 236.8Kbps
- GPRS
 - Uplink/Downlink up to 85.6Kbps
- CSD
 - GSM data rate 14.4Kbps
 - WCDMA data rate 57.6Kbps
 - WCDMA 64Kbps CSD for Video call

Other features

- USB Driver for Microsoft Windows 2000/XP/Vista/Win7/Win8
- USB Driver for Windows CE/Mobile
- USB Driver for Linux /Android
- RIL supporting for Android/Windows CE/Mobile
- Automatic installation for windows
- Linux API SDK
- Firmware update via USB
- TCP/IP/IPV4/V6 Multi-PDP,MT PDP
- FTP/FTPS/HTTP/HTTPS/SMTP/POP3/DNS/MMS
- DTMF
- MBIM to Win8
- Source code of the PC manager of the device for reference

Interfaces

- USB2.0
- UART
- SIM card
- SPI
- I2C
- Constant current sink
- GPIO
- ADC
- PCM
- SDIO

Certifications(Plan)

- CCC
- ROHS
- REACH

More about SIMCom SIM7600CE
Please contact:
Tel: 86-21-32523300
Fax: 86-21-32523020
Email: simcom@sim.com
Website: www.simcomm2m.com

X-ON Electronics

Largest Supplier of Electrical and Electronic Components

Click to view similar products for [simcom](#) manufacturer:

Other Similar products are found below :

[SIM5360E](#) [SIM33ELA-TE](#) [SIM7000E-TE-KIT](#) [SIM7000G-TE-KIT](#) [S2-10672-Z1L85](#) [SIM7500E-TE-KIT](#) [SIM800C24-TE](#) [SIM8905E-5GWF-TEKIT](#) [SIM8950E-EVB-KIT](#) [SIM8950E-TE](#) [SIM7600CE](#) [S2-1088E-Z2014](#) [SIM28ML-TE](#) [SIM7020E](#) [SIM28M-TE](#) [SIM7100E-EVM](#) [SIM7600G-H-TE-KIT](#) [S2-107DR-Z1Y5B](#) [SIM7020G-SUB-KIT](#) [S2-106R4-Z1Q6F-Z1Q6Q](#) [SIM868E TE KIT](#) [SIM7000A](#) [SIM868-L](#) [SIM7600E-H-TE-KIT](#) [S2-1060C-Z1F0A](#) [S2-106ZN](#) [SIM7600CE-PCIE](#) [S2-106RB-Z1Q6V-Z1Q6R](#) [SIM7600CE-L](#) [SIM5215 CONNECTOR](#) [S2-107XB-Z2356-Z2352](#) [S2-10688-Z1L1T](#) [S2-106R4-Z1Q6J-Z1Q6Q](#) [SIM800L](#) [S2-10732-Z1T61](#) [SIM7020C](#) [SIM800A](#) [SIM808](#) [S2-105V4-Z185K](#) [SIM800](#) [SIM800H](#) [S2-10686-Z1L1D](#) [SIM800C32-BT](#) [SIM5320E](#) [S2-107GY-Z200N](#) [SIM800C32](#) [SIM800C 32Mbit](#) [S2-106RB-Z1Q6V-Z1Q6Q](#) [S2-107Y8-Z1T5R](#) [SIM28](#)