

**SEBAT54/A/C/S**  
**Schottky barrier diode**

Revision:B

**Features**

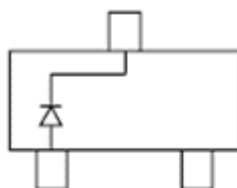
- Low Turn-on Voltage
- Fast Switching
- PN Junction Guard Ring for Transient and ESD Protection

**Applications**

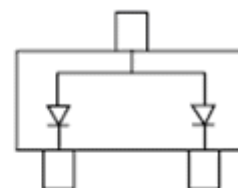
- Rectifying small power

**Construction**

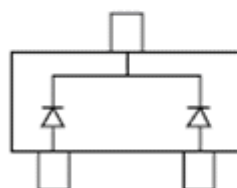
- Silicon epitaxial planer



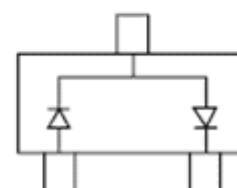
SEBAT54



SEBAT54A



SEBAT54C



SEBAT54S

SOT-23

**Absolute maximum ratings (Ta=25°C)**

| Parameter                         | Symbol    | Limits     | Unit |
|-----------------------------------|-----------|------------|------|
| Reverse voltage (repetitive peak) | $V_{RM}$  | 30         | V    |
| Reverse voltage (DC)              | $V_R$     | 30         | V    |
| Repetitive Peak Forward Current   | $I_{FRM}$ | 300        | mA   |
| Forward current surge peak        | $I_{FSM}$ | 600        | mA   |
| Junction temperature              | $T_j$     | 125        | °C   |
| Storage temperature               | $T_{stg}$ | -65 ~ +125 | °C   |

**Electrical characteristics (Ta=25°C)**

| Parameter       | Symbol | Min. | Typ. | Max. | Unit | Conditions    |
|-----------------|--------|------|------|------|------|---------------|
| Forward voltage | $V_F$  | —    | —    | 240  | mV   | $I_F = 0.1mA$ |
|                 | $V_F$  | —    | —    | 320  | mV   | $I_F = 1mA$   |
|                 | $V_F$  | —    | —    | 400  | mV   | $I_F = 10mA$  |
|                 | $V_F$  | —    | —    | 500  | mV   | $I_F = 30mA$  |
|                 | $V_F$  | —    | —    | 1000 | mV   | $I_F = 100mA$ |
| Reverse current | $I_R$  | —    | —    | 2.0  | uA   | $V_R = 25V$   |

## ● Electrical characteristic curves

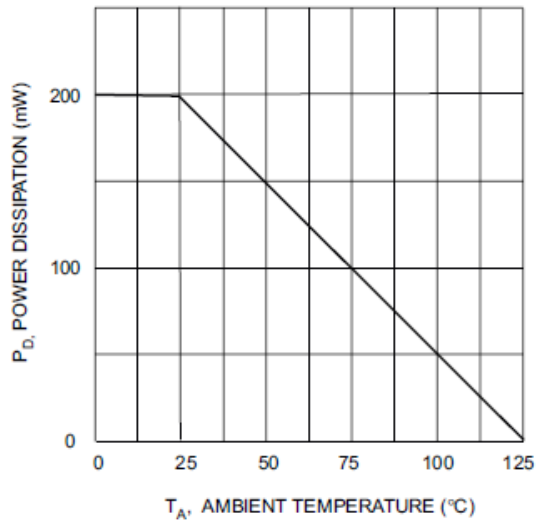


Fig. 1 Power Derating Curve

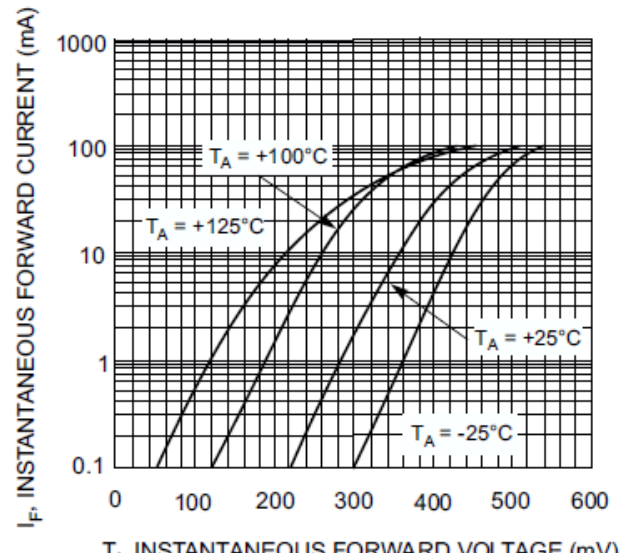


Fig. 2, Typical Forward Characteristics

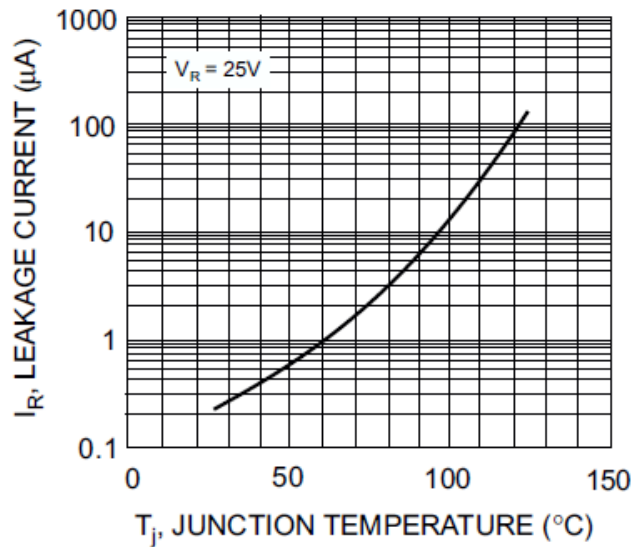
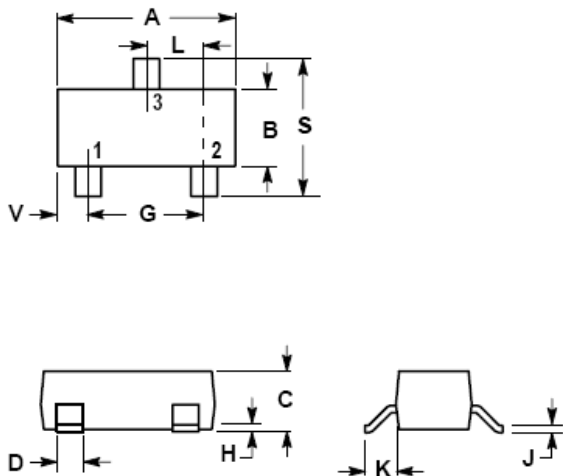


Fig. 3, Typical Reverse Characteristics

**SOT-23**



**NOTES:**

1. DIMENSIONING AND TOLERANCING PER ANSI Y14.5M,1982
2. CONTROLLING DIMENSION: INCH.

| DIM | INCHES |        | MILLIMETERS |       |
|-----|--------|--------|-------------|-------|
|     | MIN    | MAX    | MIN         | MAX   |
| A   | 0.1102 | 0.1197 | 2.80        | 3.04  |
| B   | 0.0472 | 0.0551 | 1.20        | 1.40  |
| C   | 0.0350 | 0.0440 | 0.89        | 1.11  |
| D   | 0.0150 | 0.0200 | 0.37        | 0.50  |
| G   | 0.0701 | 0.0807 | 1.78        | 2.04  |
| H   | 0.0005 | 0.0040 | 0.013       | 0.100 |
| J   | 0.0034 | 0.0070 | 0.085       | 0.177 |
| K   | 0.0140 | 0.0285 | 0.35        | 0.69  |
| L   | 0.0350 | 0.0401 | 0.89        | 1.02  |
| S   | 0.0830 | 0.1039 | 2.10        | 2.64  |
| V   | 0.0177 | 0.0236 | 0.45        | 0.60  |

The SINO-IC logo is a registered trademark of ShangHai Sino-IC Microelectronics Co., Ltd.

© 2005 SINO-IC – Printed in China – All rights reserved.

**SHANGHAI SINO-IC MICROELECTRONICS CO., LTD**

**Add:** Building 3, Room 3401-03, No.200 Zhangheng Road, ZhangJiang Hi-Tech Park, Pudong, Shanghai 201203, China

**Phone:** +86-21-33932402 33932403 33932405 33933508 33933608

**Fax:** +86-21-33932401

**Email:** szrxw002@126.com

**Website:** <http://www.sino-ic.net>

## X-ON Electronics

Largest Supplier of Electrical and Electronic Components

*Click to view similar products for [Schottky Diodes & Rectifiers](#) category:*

*Click to view products by [SINO-IC](#) manufacturer:*

Other Similar products are found below :

[MA4E2039](#) [MA4E2508M-1112](#) [MBR10100CT-BP](#) [MBR1545CT](#) [MMBD301M3T5G](#) [GS1JE-TP](#) [RB160M-50TR](#) [BAS16E6433HTMA1](#)  
[BAS 3010S-02LRH E6327](#) [BAT 54-02LRH E6327](#) [NSR05F40QNXT5G](#) [NSVR05F40NXT5G](#) [NTE555](#) [JANS1N6640](#) [SB07-03C-TB-H](#)  
[SK310-T](#) [SK33A-TP](#) [SK34B-TP](#) [SS3003CH-TL-E](#) [PDS3100Q-7](#) [GA01SHT18](#) [CRS10I30A\(TE85L,QM](#) [MA4E2501L-1290](#)  
[MBRB30H30CT-1G](#) [DMJ3940-000](#) [SB007-03C-TB-E](#) [SK32A-TP](#) [SK33B-TP](#) [SK35A-TP](#) [SK38B-LTP](#) [SK38B-TP](#) [NRVBM120LT1G](#)  
[NTE505](#) [NTSB30U100CT-1G](#) [VS-6CWQ10FNHM3](#) [CRG04\(T5L,TEMQ\)](#) [ACDBA1100LR-HF](#) [ACDBA1200-HF](#) [ACDBA2100-HF](#)  
[ACDBA240-HF](#) [ACDBA3100-HF](#) [CDBQC0530L-HF](#) [ACDBA260LR-HF](#) [ACDBA1100-HF](#) [MA4E2502L-1246](#) [10BQ060-M3/5BT](#)  
[NRVB130LSFT1G](#) [CRS08TE85LQM](#) [PMAD1108-LF](#) [B120Q-13-F](#)