

## P-Channel Enhancement Mode MOSFET

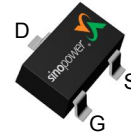
### Features

- 20V/-3.5A,  
 $R_{DS(ON)} = 73m\Omega$  (Max.) @  $V_{GS} = -4.5V$   
 $R_{DS(ON)} = 110m\Omega$  (Max.) @  $V_{GS} = -2.5V$   
 $R_{DS(ON)} = 193m\Omega$  (Max.) @  $V_{GS} = -1.8V$
- Reliable and Rugged
- Lead Free and Green Devices Available (RoHS Compliant)

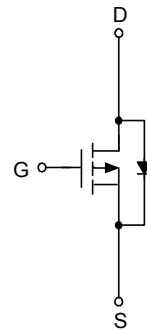
### Applications

- Power Management in Notebook Computer, Portable Equipment and Battery Powered Systems.

### Pin Description

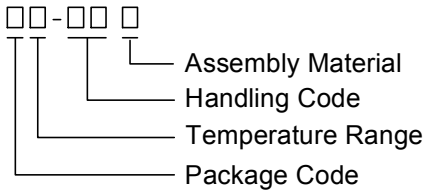


Top View of SOT-23-3



P-Channel MOSFET

### Ordering and Marking Information

|              |   |   |
|--------------|---|---|
| SM2313PS     |  | Package Code<br>A : SOT-23-3<br>Operating Junction Temperature Range<br>C : -55 to 150 °C<br>Handling Code<br>TR : Tape & Reel (3000ea/reel)<br>Assembly Material<br>G : Halogen and Lead Free Device |
| SM2313PS A : | <span style="border: 1px solid black; padding: 2px;">B13XX</span>                   | XX - Lot Code   |

Note : SINOPOWER lead-free products contain molding compounds/die attach materials and 100% matte tin plate termination finish; which are fully compliant with RoHS. SINOPOWER lead-free products meet or exceed the lead-free requirements of IPC/JEDEC J-STD-020D for MSL classification at lead-free peak reflow temperature. SINOPOWER defines "Green" to mean lead-free (RoHS compliant) and halogen free (Br or Cl does not exceed 900ppm by weight in homogeneous material and total of Br and Cl does not exceed 1500ppm by weight).

SINOPOWER reserves the right to make changes to improve reliability or manufacturability without notice, and advise customers to obtain the latest version of relevant information to verify before placing orders.

## Absolute Maximum Ratings ( $T_A = 25^\circ\text{C}$ unless otherwise noted)

| Symbol            | Parameter                              | Rating                 | Unit  |
|-------------------|--|------------------------|-------|
| $V_{DSS}$         | Drain-Source Voltage                   | -20                    | V     |
| $V_{GSS}$         | Gate-Source Voltage                    | $\pm 12$               |       |
| $I_D^*$           | Continuous Drain Current               | $T_A=25^\circ\text{C}$ | -3.5  |
|                   |  | $T_A=70^\circ\text{C}$ | -2.8  |
| $I_{DM}^*$        | 300 $\mu\text{s}$ Pulsed Drain Current | $T_A=25^\circ\text{C}$ | -14.2 |
|                   |  | $T_A=70^\circ\text{C}$ | -11.4 |
| $I_S^*$           | Diode Continuous Forward Current       | -1                     | A     |
| $T_J$             | Maximum Junction Temperature           | 150                    |       |
| $T_{STG}$         | Storage Temperature Range              | -55 to 150             |       |
| $P_D^*$           | Maximum Power Dissipation              | $T_A=25^\circ\text{C}$ | 1     |
|                   |  | $T_A=70^\circ\text{C}$ | 0.7   |
| $R_{\theta JA}^*$ | Thermal Resistance-Junction to Ambient | $t \leq 10\text{s}$    | 90    |
|                   |  | Steady state           | 125   |

Note: \*Surface Mounted on 1in<sup>2</sup> pad area,  $t \leq 10\text{sec}$ .

## Electrical Characteristics ( $T_A = 25^\circ\text{C}$ unless otherwise noted)

| Symbol  | Parameter                        | Test Conditions   | Min. | Typ. | Max.      | Unit          |
|---|----------------------------------|---|------|------|-----------|---------------|
| <b>Static Characteristics</b>                   |                                  |   |      |      |           |               |
| $BV_{DSS}$                                      | Drain-Source Breakdown Voltage   | $V_{GS}=0\text{V}, I_{DS}=-250\mu\text{A}$                          | -20  | -    | -         | V             |
| $I_{DSS}$                                       | Zero Gate Voltage Drain Current  | $V_{DS}=-16\text{V}, V_{GS}=0\text{V}$<br>$T_J=85^\circ\text{C}$    | -    | -    | -1        | $\mu\text{A}$ |
|   |                                  |   | -    | -    | -30       |               |
| $V_{GS(th)}$                                    | Gate Threshold Voltage           | $V_{DS}=V_{GS}, I_{DS}=-250\mu\text{A}$                             | -0.5 | -0.7 | -1        | V             |
| $I_{GSS}$                                       | Gate Leakage Current             | $V_{GS}=\pm 12\text{V}, V_{DS}=0\text{V}$                           | -    | -    | $\pm 100$ | nA            |
| $R_{DS(ON)}^a$                                  | Drain-Source On-State Resistance | $V_{GS}=-4.5\text{V}, I_{DS}=-3.5\text{A}$                          | -    | 58   | 73        | m $\Omega$    |
|   |                                  | $V_{GS}=-2.5\text{V}, I_{DS}=-2.2\text{A}$                          | -    | 82   | 110       |               |
|   |                                  | $V_{GS}=-1.8\text{V}, I_{DS}=-0.9\text{A}$                          | -    | 130  | 193       |               |
| $V_{SD}^a$                                      | Diode Forward Voltage            | $I_{SD}=-1\text{A}, V_{GS}=0\text{V}$                               | -    | -0.7 | -1        | V             |
| <b>Gate Charge Characteristics <sup>b</sup></b> |                                  |   |      |      |           |               |
| $Q_g$   | Total Gate Charge                | $V_{DS}=-10\text{V}, V_{GS}=-4.5\text{V},$<br>$I_{DS}=-3.5\text{A}$ | -    | 5.2  | -         | nC            |
| $Q_{gs}$  | Gate-Source Charge               |   | -    | 0.7  | -         |               |
| $Q_{gd}$  | Gate-Drain Charge                |   | -    | 1.8  | -         |               |

## Electrical Characteristics (Cont.) (T<sub>A</sub> = 25°C unless otherwise noted)

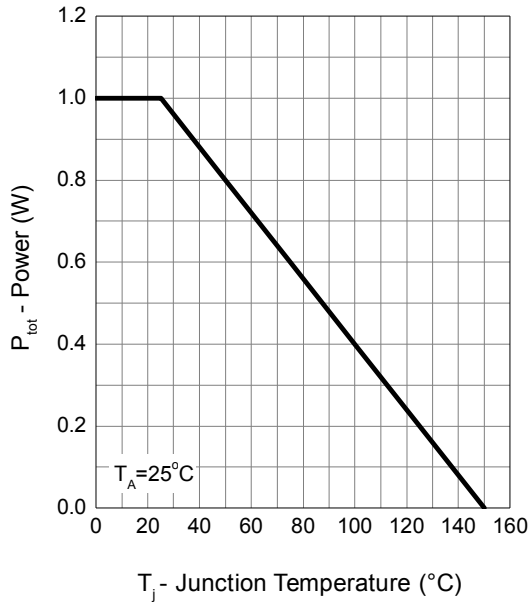
| Symbol                                     | Parameter                    | Test Conditions   | Min. | Typ. | Max. | Unit |
|--|------------------------------|---|------|------|------|------|
| <b>Dynamic Characteristics<sup>b</sup></b> |                              |   |      |      |      |      |
| R <sub>G</sub>                             | Gate Resistance              | V <sub>GS</sub> =0V, V <sub>DS</sub> =0V, F=1MHz  | -    | 4.2  | -    | Ω    |
| C <sub>iss</sub>                           | Input Capacitance            | V <sub>GS</sub> =0V,<br>V <sub>DS</sub> =-10V,<br>Frequency=1.0MHz  | -    | 357  | -    | pF   |
| C <sub>oss</sub>                           | Output Capacitance           |   |      |      |      |      |
| C <sub>rss</sub>                           | Reverse Transfer Capacitance |   |      |      |      |      |
| t <sub>d(ON)</sub>                         | Turn-on Delay Time           | V <sub>DD</sub> =-10V, R <sub>L</sub> =10Ω,<br>I <sub>DS</sub> =-1A, V <sub>GEN</sub> =-4.5V,<br>R <sub>G</sub> =6Ω | -    | 5.6  | -    | ns   |
| t <sub>r</sub>                             | Turn-on Rise Time            |   |      |      |      |      |
| t <sub>d(OFF)</sub>                        | Turn-off Delay Time          |   |      |      |      |      |
| t <sub>f</sub>                             | Turn-off Fall Time           |   |      |      |      |      |
| t <sub>rr</sub>                            | Reverse Recovery Time        | I <sub>SD</sub> =-3.5A, di <sub>SD</sub> /dt = 100A/μs  | -    | 12   | -    | nC   |
| Q <sub>rr</sub>                            | Reverse Recovery Charge      |   |      |      |      |      |

Note a : Pulse test ; pulse width ≤ 300μs, duty cycle ≤ 2%.

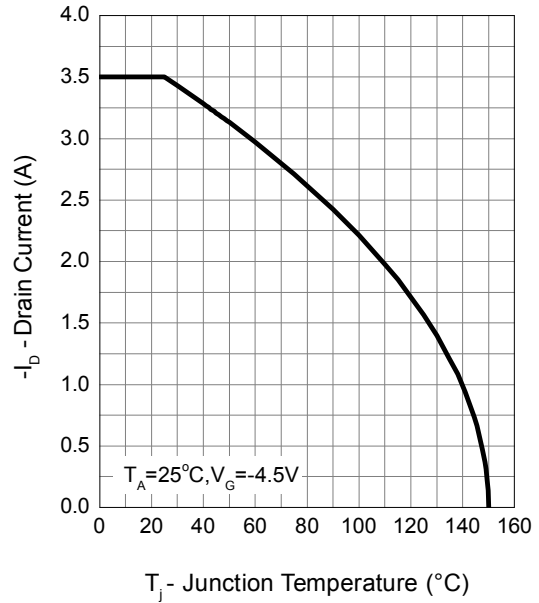
Note b : Guaranteed by design, not subject to production testing.

## Typical Operating Characteristics

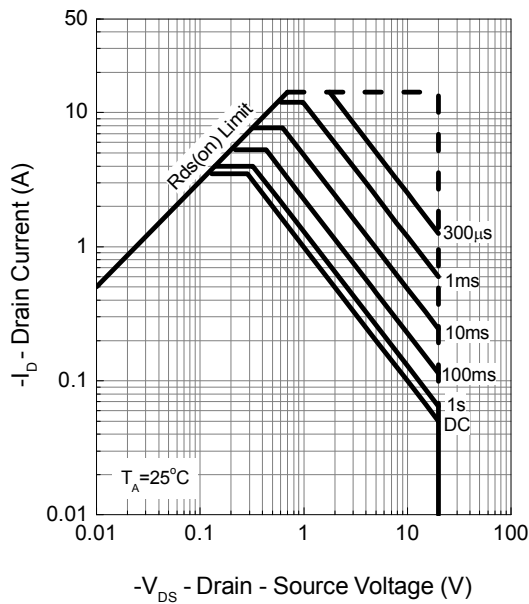
Power Dissipation



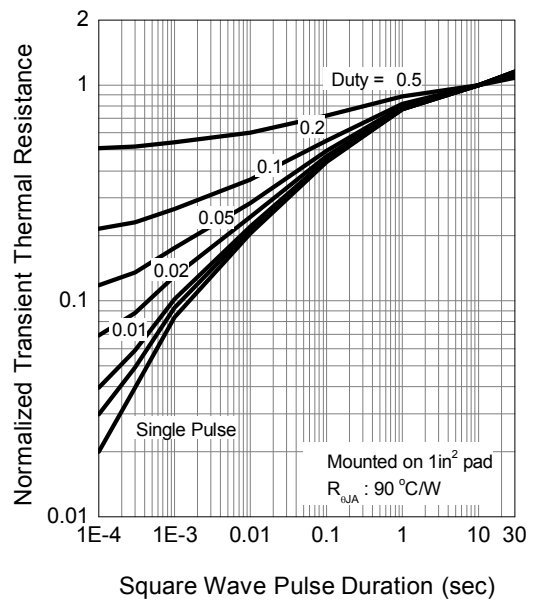
Drain Current



Safe Operation Area

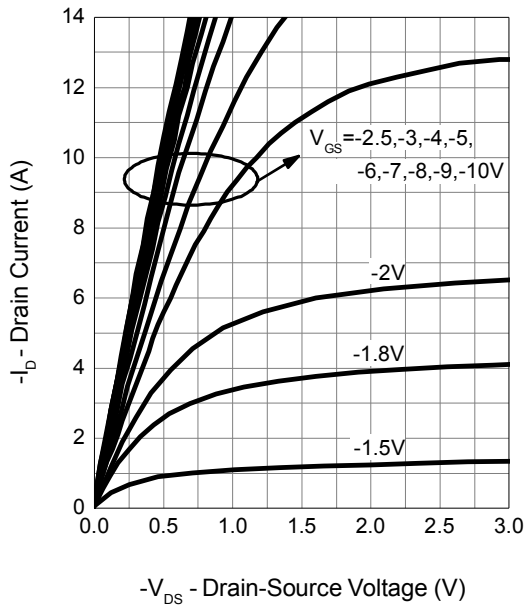


Thermal Transient Impedance

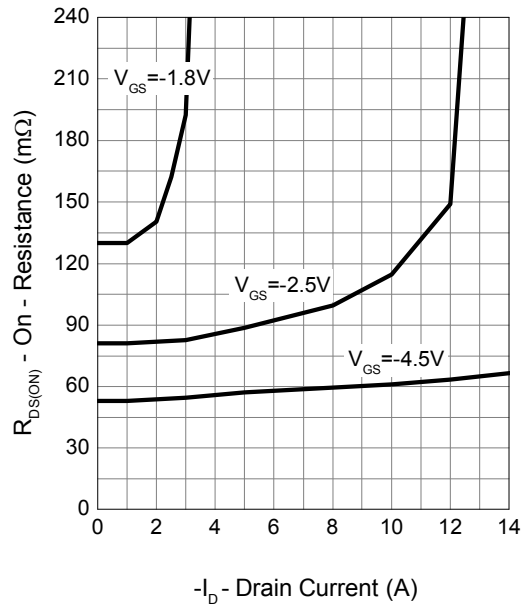


Typical Operating Characteristics (Cont.)

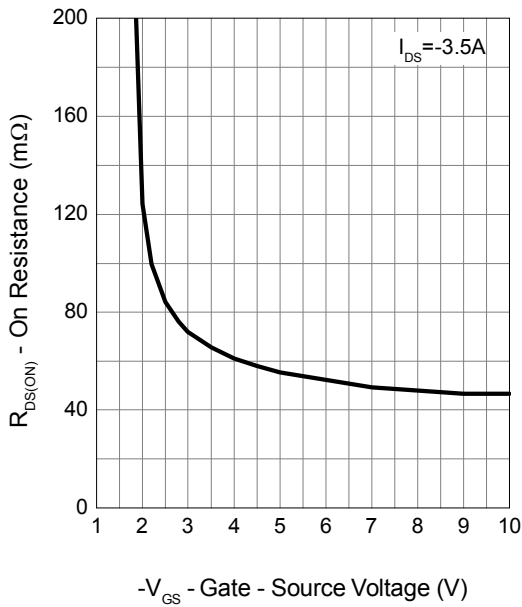
Output Characteristics



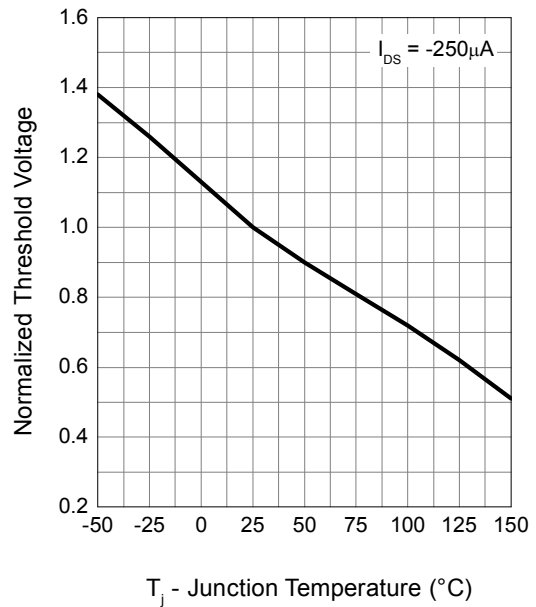
Drain-Source On Resistance



Gate-Source On Resistance

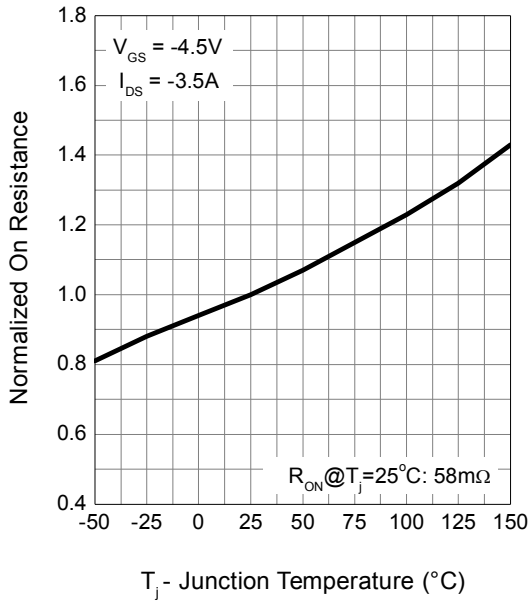


Gate Threshold Voltage

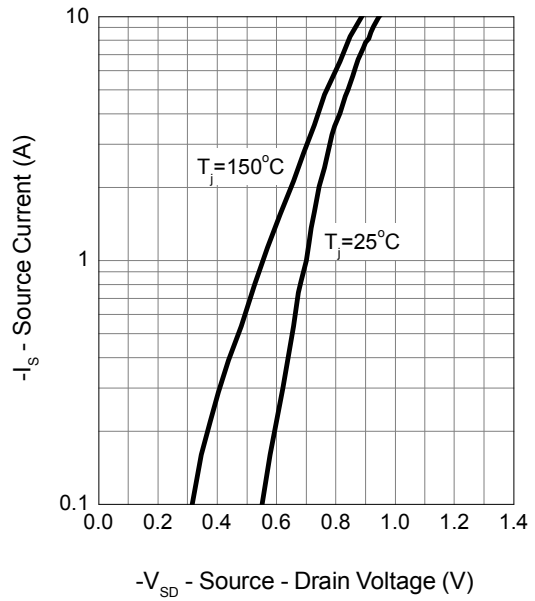


Typical Operating Characteristics (Cont.)

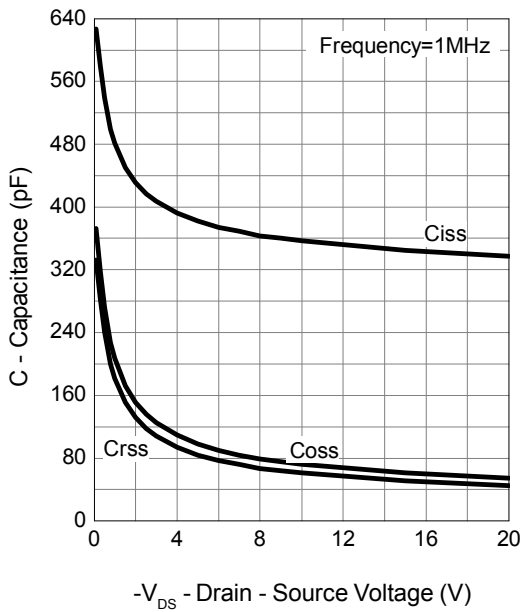
Drain-Source On Resistance



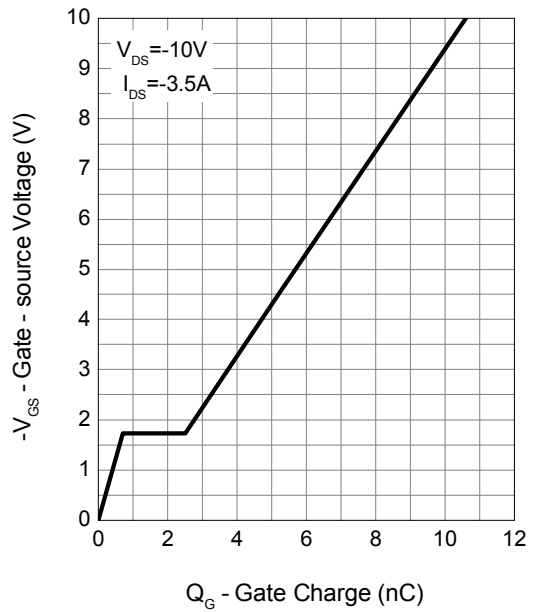
Source-Drain Diode Forward



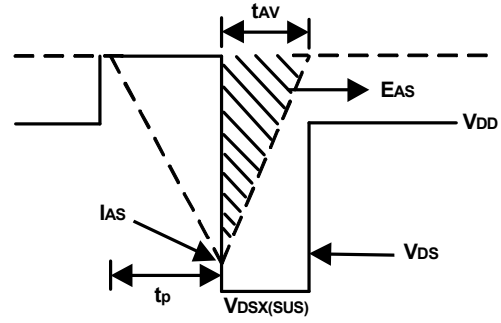
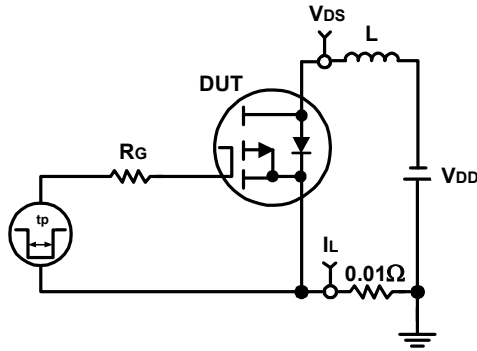
Capacitance



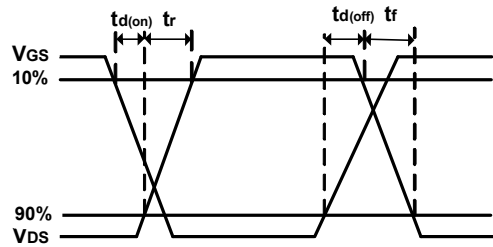
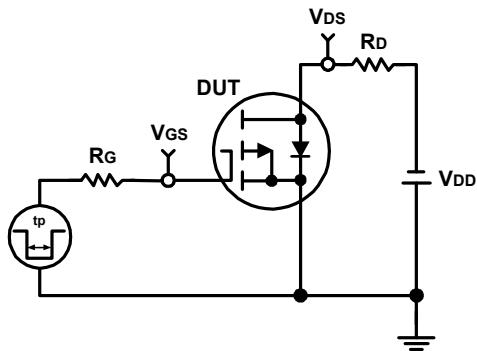
Gate Charge



### Avalanche Test Circuit and Waveforms

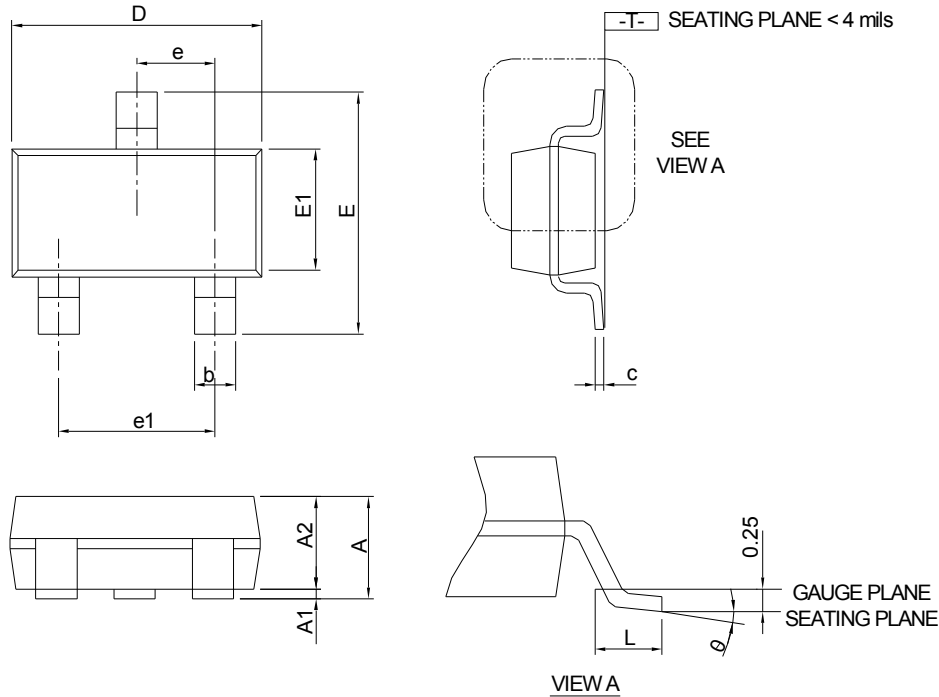


### Switching Time Test Circuit and Waveforms



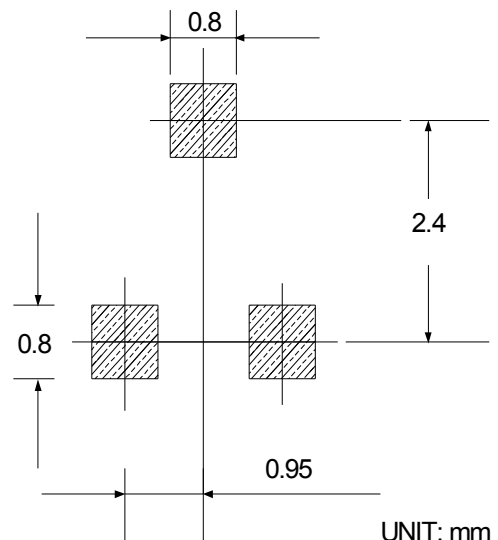
## Package Information

SOT-23-3



| SYMBOL   | SOT-23-3    |      |           |       |
|----------|-------------|------|-----------|-------|
|          | MILLIMETERS |      | INCHES    |       |
|          | MIN.        | MAX. | MIN.      | MAX.  |
| A        | -           | 1.20 | -         | 0.047 |
| A1       | 0.00        | 0.08 | 0.000     | 0.003 |
| A2       | 0.90        | 1.12 | 0.035     | 0.044 |
| b        | 0.30        | 0.50 | 0.012     | 0.020 |
| c        | 0.08        | 0.22 | 0.003     | 0.009 |
| D        | 2.70        | 3.10 | 0.106     | 0.122 |
| E        | 2.60        | 3.00 | 0.102     | 0.118 |
| E1       | 1.40        | 1.80 | 0.055     | 0.071 |
| e        | 0.95 BSC    |      | 0.037 BSC |       |
| e1       | 1.90 BSC    |      | 0.075 BSC |       |
| L        | 0.30        | 0.60 | 0.012     | 0.024 |
| $\theta$ | 0°          | 8°   | 0°        | 8°    |

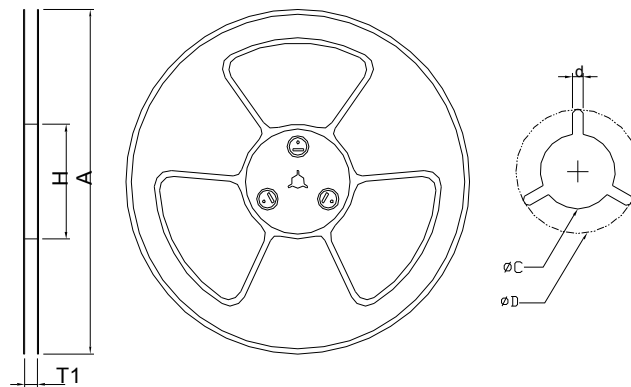
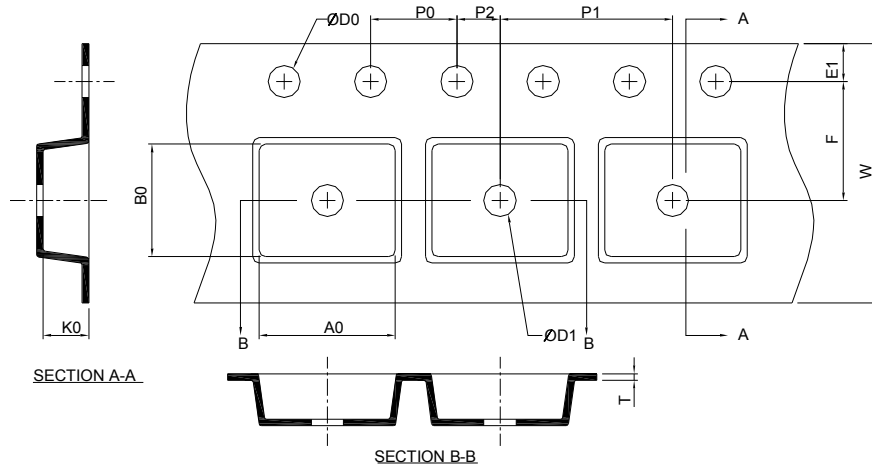
### RECOMMENDED LAND PATTERN



Note : Dimension D and E1 do not include mold flash, protrusions or gate burrs. Mold flash, protrusion or gate burrs shall not exceed 10 mil per side.



## Carrier Tape & Reel Dimensions



| Application | A          | H        | T1                | C                  | d        | D                 | W         | E1        | F         |
|-------------|------------|----------|-------------------|--------------------|----------|-------------------|-----------|-----------|-----------|
| SOT-23-3    | 178.0±2.00 | 50 MIN.  | 8.4+2.00<br>-0.00 | 13.0+0.50<br>-0.20 | 1.5 MIN. | 20.2 MIN.         | 8.0±0.30  | 1.75±0.10 | 3.5±0.05  |
|             | P0         | P1       | P2                | D0                 | D1       | T                 | A0        | B0        | K0        |
|             | 4.0±0.10   | 4.0±0.10 | 2.0±0.05          | 1.5+0.10<br>-0.00  | 1.0 MIN. | 0.6+0.00<br>-0.40 | 3.20±0.20 | 3.10±0.20 | 1.50±0.20 |

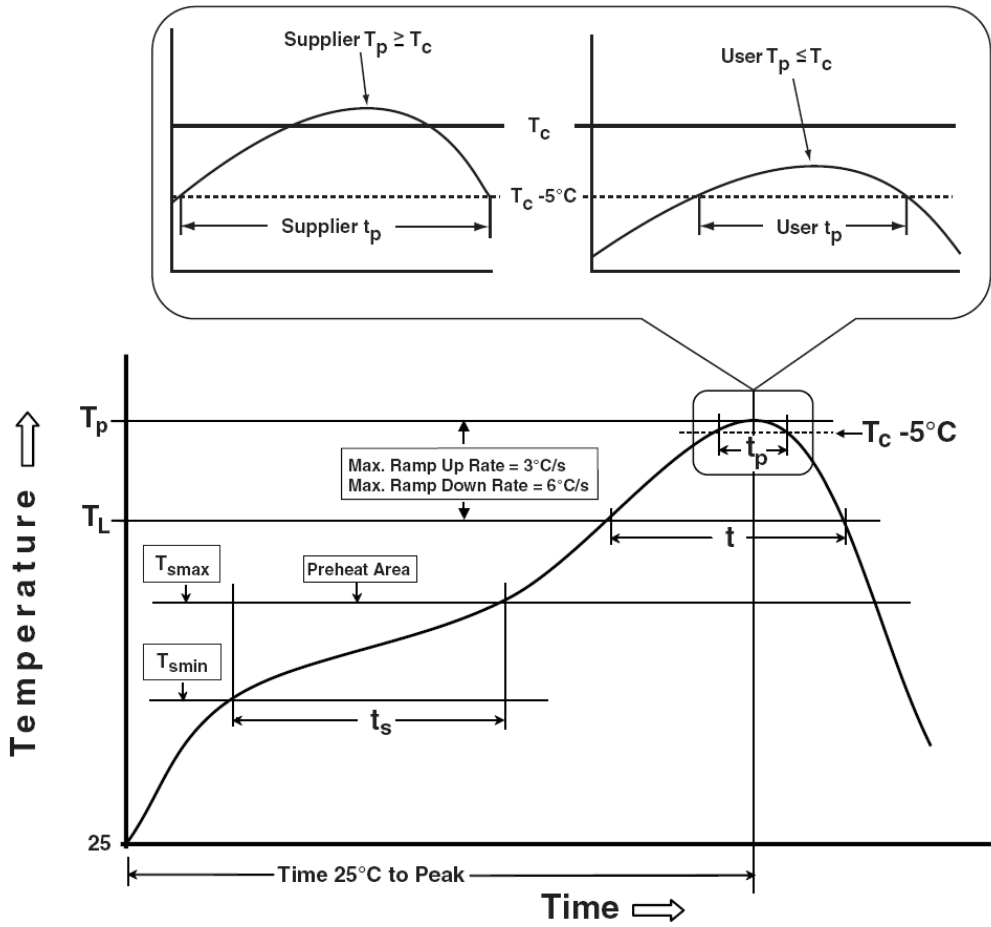
(mm)

## Taping Direction Information

SOT-23-3



## Classification Profile



## Classification Reflow Profiles

| Profile Feature  | Sn-Pb Eutectic Assembly            | Pb-Free Assembly                   |
|--|------------------------------------|------------------------------------|
| <b>Preheat &amp; Soak</b>  |                                    |                                    |
| Temperature min ( $T_{smin}$ )   | 100 °C                             | 150 °C                             |
| Temperature max ( $T_{smax}$ )   | 150 °C                             | 200 °C                             |
| Time ( $T_{smin}$ to $T_{smax}$ ) ( $t_s$ )  | 60-120 seconds                     | 60-120 seconds                     |
| Average ramp-up rate ( $T_{smax}$ to $T_p$ )   | 3 °C/second max.                   | 3°C/second max.                    |
| Liquidous temperature ( $T_L$ )  | 183 °C                             | 217 °C                             |
| Time at liquidous ( $t_L$ )  | 60-150 seconds                     | 60-150 seconds                     |
| Peak package body Temperature ( $T_p$ )*   | See Classification Temp in table 1 | See Classification Temp in table 2 |
| Time ( $t_p$ )** within 5°C of the specified classification temperature ( $T_c$ )                                | 20** seconds                       | 30** seconds                       |
| Average ramp-down rate ( $T_p$ to $T_{smax}$ )   | 6 °C/second max.                   | 6 °C/second max.                   |
| Time 25°C to peak temperature  | 6 minutes max.                     | 8 minutes max.                     |
| * Tolerance for peak profile Temperature ( $T_p$ ) is defined as a supplier minimum and a user maximum.          |                                    |                                    |
| ** Tolerance for time at peak profile temperature ( $t_p$ ) is defined as a supplier minimum and a user maximum. |                                    |                                    |

Table 1. SnPb Eutectic Process – Classification Temperatures ( $T_c$ )

| Package Thickness | Volume mm <sup>3</sup> <350 | Volume mm <sup>3</sup> ≥350 |
|-------------------|-----------------------------|-----------------------------|
| <2.5 mm           | 235 °C                      | 220 °C                      |
| ≥2.5 mm           | 220 °C                      | 220 °C                      |

Table 2. Pb-free Process – Classification Temperatures ( $T_c$ )

| Package Thickness | Volume mm <sup>3</sup> <350 | Volume mm <sup>3</sup> 350-2000 | Volume mm <sup>3</sup> >2000 |
|-------------------|-----------------------------|---------------------------------|------------------------------|
| <1.6 mm           | 260 °C                      | 260 °C                          | 260 °C                       |
| 1.6 mm – 2.5 mm   | 260 °C                      | 250 °C                          | 245 °C                       |
| ≥2.5 mm           | 250 °C                      | 245 °C                          | 245 °C                       |

## Reliability Test Program

| Test item     | Method        | Description                            |
|---------------|---------------|--|
| SOLDERABILITY | JESD-22, B102 | 5 Sec, 245°C                           |
| HTRB          | JESD-22, A108 | 1000 Hrs, 80% of VDS max @ $T_{jmax}$  |
| HTGB          | JESD-22, A108 | 1000 Hrs, 100% of VGS max @ $T_{jmax}$ |
| PCT           | JESD-22, A102 | 168 Hrs, 100%RH, 2atm, 121°C           |
| TCT           | JESD-22, A104 | 500 Cycles, -65°C~150°C                |

## Customer Service

### Sinopower Semiconductor, Inc.

5F, No. 6, Dusing 1St Rd., Hsinchu Science Park,

Hsinchu, 30078, Taiwan

TEL: 886-3-5635818 Fax: 886-3-5642050

## X-ON Electronics

Largest Supplier of Electrical and Electronic Components

*Click to view similar products for [MOSFET](#) category:*

*Click to view products by [Sinopower](#) manufacturer:*

Other Similar products are found below :

[614233C](#) [648584F](#) [MCH3443-TL-E](#) [MCH6422-TL-E](#) [FDPF9N50NZ](#) [FW216A-TL-2W](#) [FW231A-TL-E](#) [APT5010JVR](#) [NTNS3A92PZT5G](#)  
[IRF100S201](#) [JANTX2N5237](#) [2SK2464-TL-E](#) [2SK3818-DL-E](#) [FCA20N60\\_F109](#) [FDZ595PZ](#) [STD6600NT4G](#) [FSS804-TL-E](#) [2SJ277-DL-E](#)  
[2SK1691-DL-E](#) [2SK2545\(Q,T\)](#) [D2294UK](#) [405094E](#) [423220D](#) [MCH6646-TL-E](#) [TPCC8103,L1Q\(CM](#) [367-8430-0972-503](#) [VN1206L](#)  
[424134F](#) [026935X](#) [051075F](#) [SBVS138LT1G](#) [614234A](#) [715780A](#) [NTNS3166NZT5G](#) [751625C](#) [873612G](#) [IRF7380TRHR](#)  
[IPS70R2K0CEAKMA1](#) [RJK60S3DPP-E0#T2](#) [RJK60S5DPK-M0#T0](#) [APT5010JVFR](#) [APT12031JFLL](#) [APT12040JVR](#) [DMN3404LQ-7](#)  
[NTE6400](#) [JANTX2N6796U](#) [JANTX2N6784U](#) [JANTXV2N5416U4](#) [SQM110N05-06L-GE3](#) [SIHF35N60E-GE3](#)