

Features

- programmable output: Minimum can go to 0.8V
- Highly Accurate: $\pm 1.5\%$
- Dropout Voltage: 300mV @ 100mA (3.0V type)
- High Ripple Rejection: 50dB (10 kHz)
- Low Power Consumption: 30 μ A (TYP.)
- Maximum Output Current : 300mA ($V_{IN} \geq V_{OUT}+1V$)
- Standby Current : less than 0.1 μ A
- Internal protector: current limiter ,short protector and over temperature protection
- Instructions with POWER GOOD
- SOT23-5L packages

Applications

- Mobile phones
- Cordless phones
- Cameras, Video cameras
- Portable games
- Portable AV equipment
- Reference voltage
- Battery powered equipment

General Description

The SSP7212-ADJ series are highly precise, low noise, positive voltage LDO regulators manufactured using CMOS processes. The series achieves high ripple rejection and low dropout and consists of a standard voltage source, an error correction, current limiter and a phase compensation

circuit plus a driver transistor. External output feedback, customers can easily get the required voltage . In order to make the load current does not exceed the current capacity of the output transistor , built-in over-current protection , over temperature protection and short circuit protection.

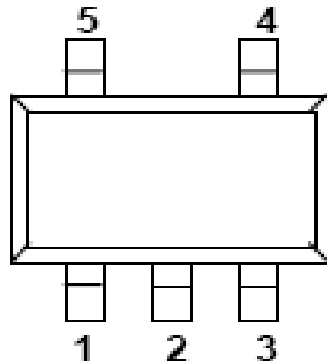
Order Information

SSP7212-ADJ①②

Designator	Symbol	Description
ADJ	Integer	Output Voltage
①	M5	Package:SOT23-5L
②	R	RoHS / Pb Free
	G	Halogen Free

Note:"ADJ" stands for output voltages. Other voltages can be specially customized

Pin Configuration

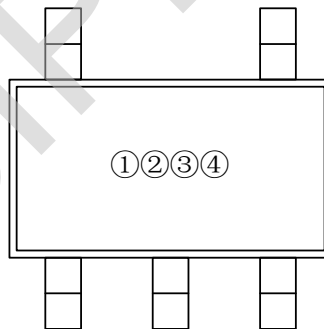


Pin Assignment

Pin Number	Pin Name	Function
SOT23-5L		
1	VIN	Supply Power
2	VSS	Ground
3	CE	Enable Pin
4	FB	Feedback
5	VOUT	Voltage Output

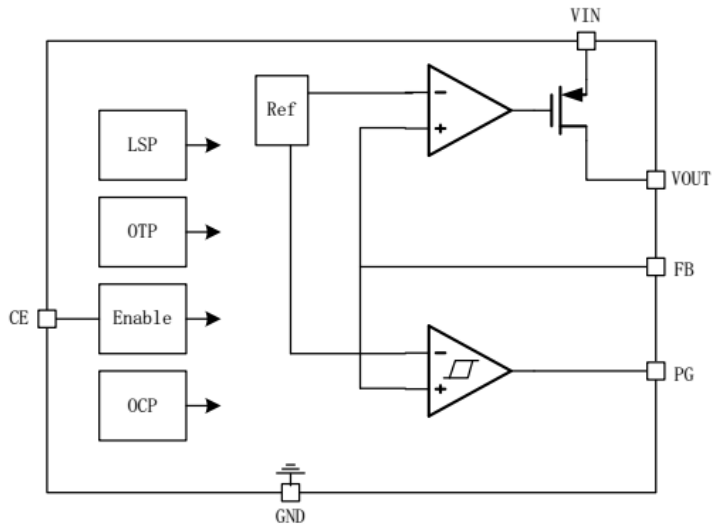
Marking Rule

- SOT23-5L



Parameter	Content	Description
①	4	Representative SSP7212-ADJ
②	a	Active 'High' (pull-down resistor built in)
	b	Active 'High' (no pull-down resistor built in)
	c	Active 'Low' (pull-up resistor built in)
	d	Active 'Low' (no pull-up resistor built in)
③	a	Representative programmable
④	Defined within the company	Custom Production

Function Block Diagram

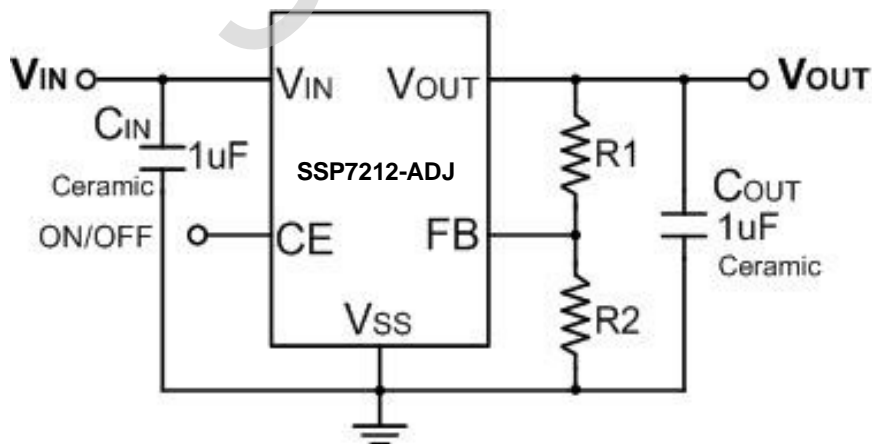


Absolute Maximum Ratings

Parameter	Symbol	Maximum Rating		Unit
Input Voltage	V_{IN}	$V_{SS}-0.3 \sim V_{SS}+6$		V
Enable Voltage	V_{CE}	$V_{SS}-0.3 \sim V_{IN}+0.3$		
Feedback voltage	V_{FB}	$V_{SS}-0.3 \sim V_{IN}+0.3$		
Output Current	V_{OUT}	$V_{SS}-0.3 \sim V_{IN}+0.3$		
Power Dissipation	P_D	SOT23-5L	350	mW
Operating Ambient Temperature	T_{opr}	-40~+85		°C
Storage Temperature	T_{stg}	-40~+125		

Caution: The absolute maximum ratings are rated values exceeding which the product could suffer physical damage. These values must therefore not be exceeded under any conditions.

Typical Application Circuit



Caution: The above connection diagram and constant will not guarantee successful operation. Perform thorough evaluation using the actual application to set the constant.

$$V_{out} = (1 + R1/R2) \times 0.8, \quad R1 \text{ and } R2 \text{ must GT } 100k\Omega.$$

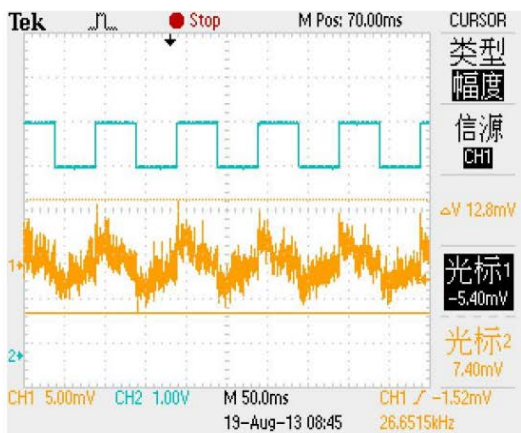
Electrical Characteristics

Parameter	Symbol	Conditions	Min.	Typ.	Max.	Unit
Feedback Voltage	V_{FB}	$V_{IN}=4.2V, V_{OUT}=3.3V, I_{OUT}=30mA$	790	800	810	mV
Output Current	I_{OUT}	$V_{IN} \geq V_{OUT(S)} + 1.0V$	300 *5	-	-	mA
Dropout Voltage	V_{drop}	$I_{OUT}=50 mA$	-	0.12	0.20	V
		$I_{OUT}=100 mA$	-	0.30	0.45	
Line Regulations	$\frac{\Delta V_{OUT}}{\Delta V_{IN} \times V_{OUT}}$	$V_{OUT(S)} + 0.5 V \leq V_{IN} \leq 7V$ $I_{OUT}=30mA$	-	0.10	0.20	%/V
Load Regulation	ΔV_{OUT2}	$V_{IN}=V_{OUT(S)}+1.0 V$ $1.0mA \leq I_{OUT} \leq 100mA$	-	50	100	mV
Output Voltage Temperature Characteristics	$\frac{\Delta V_{OUT}}{Ta \times V_{OUT}}$	$V_{IN}=V_{OUT(S)}+1.0 V, I_{OUT}=10 mA$ $-40^{\circ}C \leq Ta \leq 85^{\circ}C$	-	± 100	-	ppm/ $^{\circ}C$
Supply Current	I_{SS1}	$V_{IN}=V_{OUT(S)}+1.0 V$	-	30	40	μA
Shutdown Current	I_{shut}	$V_{IN}=5 V, V_{CE}=0$	-	-	0.1	μA
Input Voltage	V_{IN}	—	2.0	-	8	V
Ripple-Rejection	PSRR	$V_{IN}=V_{OUT(S)}+1.0 V, f=1kHz$ $V_{rip}=0.5 V_{rms}, I_{OUT}=50 mA$	-	50	-	dB
Short-circuit Current	I_{short}	$V_{IN}=V_{OUT(S)}+1.0V,$ ON/OFF Terminal is ON, $V_{OUT}=0V$	-	30	-	mA
CE "High Voltage	V_{CEH}		0.8			V
CE "Low" Voltage	V_{CEL}				0.75	V
CE "High Current	I_{CEH}	$V_{IN}=V_{CE}=V_{OUT(T)}+1V$	-0.1		0.1	μA
CE "Low" Current	I_{CEL}	$V_{IN}=V_{OUT(T)}+1V, V_{CE}=V_{SS}$	-0.1		0.1	μA

Typical Performance Characteristics (Output 3.3V)

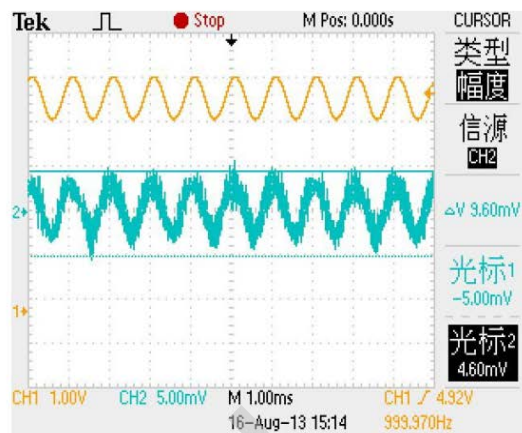
1、 The input voltage transient response

Test Conditions: $V_{in}=4.3V-5.3V$, $I_{out}=10mA$, $C_{in}=C_{out}=1\mu F$



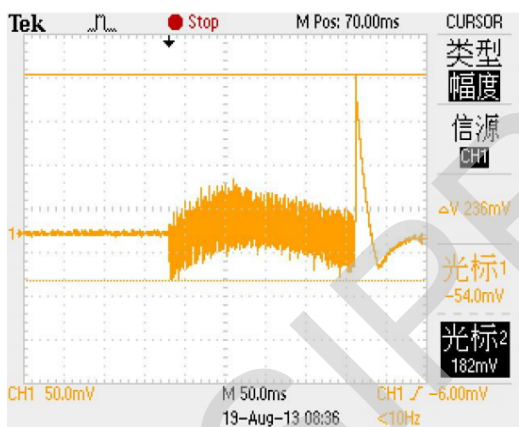
2、 Ripple rejection

Test Conditions: $V_{in}=4.3V-5.3V$, $I_{out}=10mA$, $C_{in}=C_{out}=1\mu F$



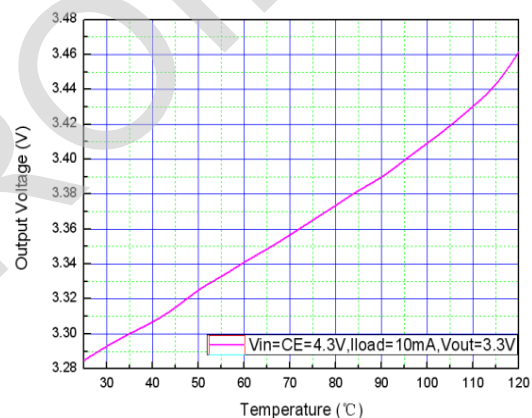
3、 The load transient response

Test Conditions: $V_{in}=CE=4.3V$, $C_{in}=C_{out}=1\mu F$, $I_{out}=0-100mA$



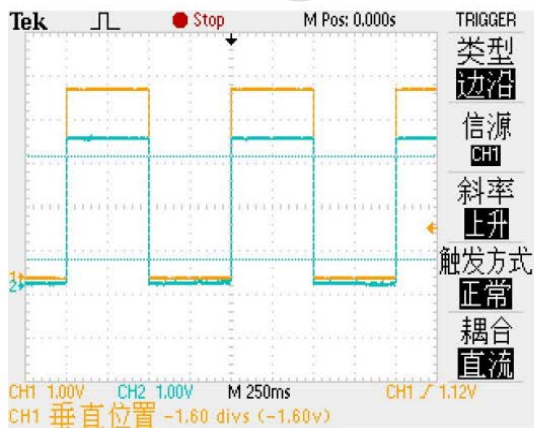
4、 The output voltage temperature curve

Test Conditions: $V_{in}=CE=4.3V$, $C_{in}=C_{out}=1\mu F$, $I_{out}=10mA$



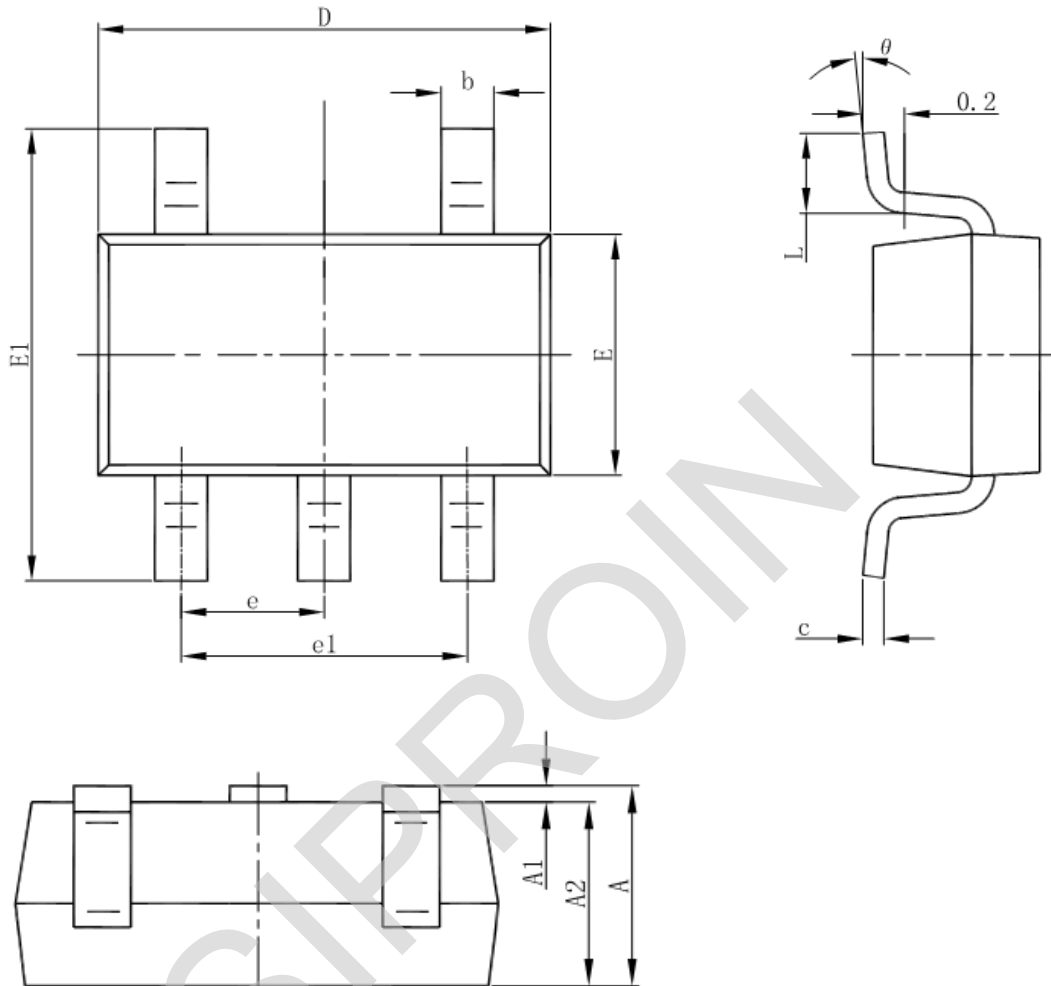
5、 Overshoot

Test Conditions: $V_{in}=0V-4.3V$, $I_{out}=0mA$, $C_{in}=C_{out}=1\mu F$



Package Information

- SOT23-5L



Symbol	Dimensions In Millimeters		Dimensions In Inches	
	Min	Max	Min	Max
A	1.050	1.250	0.041	0.049
A1	0.000	0.100	0.000	0.004
A2	1.050	1.150	0.041	0.045
b	0.300	0.500	0.012	0.020
c	0.100	0.200	0.004	0.008
D	2.820	3.020	0.111	0.119
E	1.500	1.700	0.059	0.067
E1	2.650	2.950	0.104	0.116
e	0.950(BSC)		0.037(BSC)	
e1	1.800	2.000	0.071	0.079
L	0.300	0.600	0.012	0.024
θ	0°	8°	0°	8°

X-ON Electronics

Largest Supplier of Electrical and Electronic Components

Click to view similar products for [LDO Voltage Regulators](#) category:

Click to view products by [Siproin](#) manufacturer:

Other Similar products are found below :

[M38D29FFHP#U1](#) [702103A](#) [717726C](#) [742457H](#) [MP20051DN-LF-Z](#) [R5F111PGGFB#30](#) [AP7363-SP-13](#) [NCP103AMX285TCG](#)
[NCV8664CST33T3G](#) [NCV8752AMX28TCG](#) [L9454](#) [AP7362-HA-7](#) [LX13043CLD](#) [TCR3DF185,LM\(CT](#) [TCR3DF24,LM\(CT](#)
[TCR3DF285,LM\(CT](#) [TCR3DF31,LM\(CT](#) [TCR3DF45,LM\(CT](#) [TLF4949EJ](#) [L9708](#) [L970813TR](#) [030014BB](#) [059985X](#) [EAN61387601](#)
[EAN61573601](#) [NCP121AMX173TCG](#) [NCP4687DH15T1G](#) [NCV8703MX30TCG](#) [701326R](#) [702087BB](#) [755078E](#) [TCR2EN28,LF\(S](#)
[LM1117DT-1.8/NO](#) [LT1086CM#TRPBF](#) [AZ1085S2-1.5TRE1](#) [MAX15101EWL+T](#) [NCV8170AXV250T2G](#) [SCD337BTG](#)
[TCR3DF27,LM\(CT](#) [TCR3DF19,LM\(CT](#) [TCR3DF125,LM\(CT](#) [TCR2EN18,LF\(S](#) [MAX15103EWL+T](#) [TS2937CZ-5.0 C0](#) [MAX8878EUK30-](#)
[T](#) [MAX663CPA](#) [NCV4269CPD50R2G](#) [NCV8716MT30TBG](#) [AZ1117IH-1.2TRG1](#) [MP2013GQ-P](#)