



ZETA-N-LTE (EU)

4G / LTE (EU) Industrial Modem with GPIO

General Description

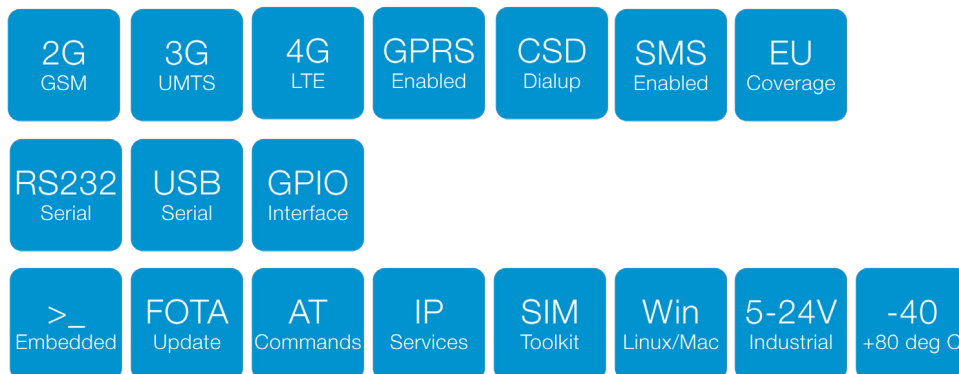


The ZETA-N-LTE (EU) is an industrial modem designed for regions of the world, where European frequencies are present. It will connect equipment to the 4G/LTE, 3G/UMTS & 2G / GSM cellular network. It has a 5 band LTE, dual band UMTS and dual band GPRS cellular engine, providing European frequency coverage.

The device offers a high level of functionality in a compact “plug and play” housing and provides RS232 & USB serial data interfaces in addition to a 10-way GPIO connector which offers a secondary TTL serial port, general purpose IO and an ADC.

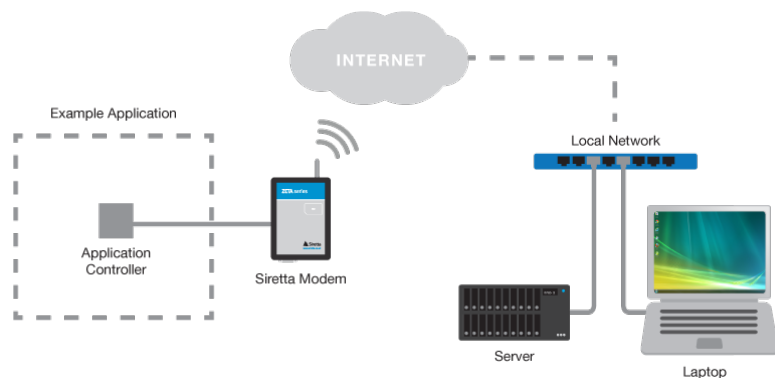
It is ideal for integrating in to a wide range of IoT applications that require reliable and stable data.

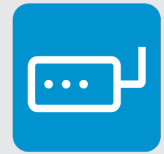
Features



Featured Applications

- » CCTV
- » Video Surveillance
- » Car Parking Payment
- » Kiosks
- » Smart Cities
- » Alarm Notification Systems





ZETA-N-LTE (EU)

4G / LTE (EU) Industrial Modem with GPIO

General Features

- » 5 Bands LTE:
B1(2100), B3(1800), B7(2600), B8(900), B20(800)
- » 2 Bands UMTS/HSPA+:
B8(900), B1(2100)
- » 2 Bands GSM | GPRS:
B8(900) B3(1800)
- » SMS text over IMS
- » SIM Access Profile
- » SIM Application Tool Kit 3GPP TS 51.014
- » Control via standard AT commands 3GPP TS7.005.27.007
- » Extended AT command set
- » Serial port multiplexer 3GPP TS27.010
- » Built in UDP/TCP/FTP/SMTP stack

Interfaces

- » 1 x RS232 serial port interface (5-wire)
- » 1 x USB 2.0 FS
- » 1 x RJ12 power connection (5 - 42V)
Nominal supply 12V
Power on & power off control
- » 1 x SMA female cellular antenna connector
- » 1 x SIM card reader (push-push) 3V, 1.8V
- » 5 x GPIO
(Input 0-42V, Output 0-3.3V)
- » 1 x ADC (0-42V)
- » 1 x RS232 secondary serial port (3-wire TTL)
- » 3 x external LED status indicators (Blue, Red, Green)

Environmental

- » Dimensions: 93mm x 67mm x 28mm
- » Weight: 104 grams
- » Extended Temperature Range: -40 to +85 deg C

Data

- » LTE Cat.4
- » Uplink up to 50 Mbps
- » Downlink up to 150 Mbps

Approvals and Compliance

- » CE

Sensitivity

Output power

- » Class 3 (0.2 W, 23 dBm) @ LTE
- » Class 3 (0.25 W, 23 dBm) @ 3G
- » Class 4 (2W) @ GSM 900
- » Class 1 (1W) @ DCS 1800

Application Resources and Drivers

AppZone C

- » Programming language: C
- » IDE: Eclipse
- » Dedicated File System: 5MB
- » Separate App. RAM Space: 2MB

USB Drivers

- » Windows 7/8/10 driver support
- » Linux native support (CDC ACM)

X-ON Electronics

Largest Supplier of Electrical and Electronic Components

Click to view similar products for [Modems](#) category:

Click to view products by [SIRETTA](#) manufacturer:

Other Similar products are found below :

[MT5600SMI-P92](#) [MTQ-L4G1-B02](#) [XM-C91-4P-U](#) [MTSMC-C1-V-N2](#) [MTSMC-G2-GP-ED](#) [ZETA-N2-GPRS](#) [C-PCM-24S24G-4AV-1](#)
[1002-CMF4-OUS](#) [ASB-1002-CM16-GLB](#) [ASB-1002-CME4-GLB](#) [ASB-1003-CM11-GLB](#) [IX20-0AN4](#) [IX20-W0N4](#) [IX20-WAN4](#) [XM-C91-](#)
[UP-UA](#) [XM-M92-4P-AA](#) [XM-M92-UP-UA](#) [XTP9B-PKC-UA](#) [453-00011](#) [M100G003S](#) [M113F002S](#) [E214G#01](#) [M1003GXT00B](#)
[MAX11947GTP+](#) [PL360G55CF-EK](#) [MT5692SMI-L-92.R1-SP](#) [MT5692SMI-92.R1-SP](#) [MT5692SMI-X-L-92.R1](#) [MT5692SMI-92.R1](#)
[MT5692SMI-L-92.R1](#) [MTC-G3-B06](#) [MTC-G3-B06-EU-GB](#) [MTCM-LNA3-B03-KIT](#) [MTCM-LAT3-B03-KIT](#) [MTD-EV3-N3](#) [MTSMC-](#)
[L4E1.R1-SP](#) [MTSMC-L4E1-U.R1-SP](#) [MTSMC-L4N1-U.R1A-SP](#) [ZN-241G](#) [NOVA-U201](#) [1003824](#) [2313067](#) [2313656](#) [2313669](#) [2700640](#)
[GW HART USB MODEM](#)