



# 628/5-2Z

## Deep groove ball bearings

### Bearing data

[Tolerances,](#)

Normal (metric), P6, P5, Normal (inch),

[Radial internal clearance,](#)

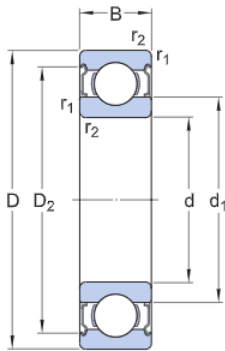
Classes C2 to C5

### Bearing interfaces

[Seat tolerances for standard conditions,](#)

[Tolerances and resultant fits](#)

## Technical specification

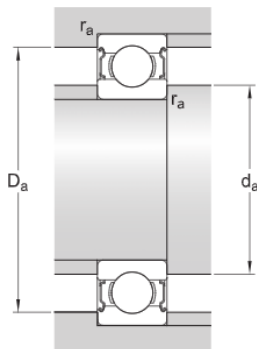


### DIMENSIONS

d	5 mm	Bore diameter
D	11 mm	Outside diameter
B	4 mm	Width
d <sub>1</sub>	≈ 6.81 mm	Shoulder diameter
D <sub>2</sub>	≈ 9.9 mm	Recess diameter
r <sub>1,2</sub>	min. 0.15 mm	Chamfer dimension

### ABUTMENT DIMENSIONS

d <sub>c</sub> min.	5.8 mm	Diameter of shaft abutment
d <sub>c</sub> max.	6.7 mm	Diameter of shaft abutment
D <sub>i</sub> max.	10.2 mm	Diameter of housing abutment
r <sub>a</sub> max.	0.1 mm	Radius of shaft or housing fillet



## CALCULATION DATA

Basic dynamic load rating	C	0.468 kN
Basic static load rating	$C_0$	0.143 kN
Fatigue load limit	$P_u$	0.006 kN
Reference speed		120 000 r/min
Limiting speed		60 000 r/min
Minimum load factor	$k_f$	0.015
Calculation factor	$f_0$	7.1

## MASS

Mass bearing	0.003 kg
--------------	----------

## TOLERANCE CLASS

Dimensional tolerances	Normal
Radial run-out	Normal

## More information

Product details	Engineering information	Tools
<a href="#">Single row deep groove ball bearings</a>	<a href="#">Principles of rolling bearing selection</a>	<a href="#">Bearing Select</a>
<a href="#">Stainless steel deep groove ball bearings</a>	<a href="#">General bearing knowledge</a>	<a href="#">SimPro Quick</a>
<a href="#">Single row deep groove ball bearings with filling slots</a>	<a href="#">Bearing selection process</a>	<a href="#">Engineering Calculator</a>
<a href="#">Double row deep groove ball bearings</a>	<a href="#">Bearing interfaces</a>	<a href="#">LubeSelect for SKF greases</a>
<a href="#">Bearing data</a>	<a href="#">Seat tolerances for standard conditions</a>	<a href="#">Heater selection tool</a>
<a href="#">Loads</a>	<a href="#">Selecting internal clearance</a>	<a href="#">Rolling bearings mounting and dismounting instructions</a>
<a href="#">Temperature limits</a>	<a href="#">Lubrication</a>	
<a href="#">Permissible speed</a>	<a href="#">Sealing, mounting and dismounting</a>	
<a href="#">Designation system</a>	<a href="#">Bearing failure and how to prevent it</a>	

# Terms and conditions

By accessing and using this website / app owned and published by AB SKF (publ.) (556007-3495 · Gothenburg) ("SKF"), you agree to the following terms and conditions:

## Warranty Disclaimer and Limitation of Liability

Although every care has been taken to assure the accuracy of the information on this website / app, SKF provides this information "AS IS" and DISCLAIMS ALL WARRANTIES, EXPRESS OR IMPLIED, INCLUDING, BUT NOT LIMITED TO, IMPLIED WARRANTIES OF MERCHANTABILITY AND FITNESS FOR A PARTICULAR PURPOSE. You acknowledge that your use of this website / app is at your sole risk, that you assume full responsibility for all costs associated with use of this website / app, and that SKF shall not be liable for any direct, incidental, consequential, or indirect damages of any kind arising out of your access to, or use of the information or software made available on this website / app. Any warranties and representations in this website / app for SKF products or services that you purchase or use will be subject to the agreed upon terms and conditions in the contract for such product or service. Further, for non-SKF websites / apps that are referenced in our website / app or where a hyperlink appears, SKF makes no warranties concerning the accuracy or reliability of the information in these websites / apps and assumes no responsibility for material created or published by third parties contained therein. In addition, SKF does not warrant that this website / app or these other linked websites / apps are free from viruses or other harmful elements.

## Copyright

Copyright in this website / app copyright of the information and software made available on this website / app rest with SKF or its licensors. All rights are reserved. All licensed material will reference the licensor that has granted SKF the right to use the material. The information and software made available on this website / app may not be reproduced, duplicated, copied, transferred, distributed, stored, modified, downloaded or otherwise exploited for any commercial use without the prior written approval of SKF. However, it may be reproduced, stored and downloaded for use by individuals without prior written approval of SKF. Under no circumstances may this information or software be supplied to third parties.

This website /app includes certain images used under license from Shutterstock, Inc.

## Trademarks and Patents

All trademarks, brand names, and corporate logos displayed on the website / app are the property of SKF or its licensors, and may not be used in any way without prior written approval by SKF. All licensed trademarks published on this website / app reference the licensor that has granted SKF the right to use the trademark. Access to this website / app does not grant to the user any license under any patents owned by or licensed to SKF.

## Changes

SKF reserves the right to make changes or additions to this website / app at any time.

## X-ON Electronics

Largest Supplier of Electrical and Electronic Components

*Click to view similar products for [SKF](#) manufacturer:*

Other Similar products are found below :

[30204 J2/Q SKF](#) [6202-2Z/C3 SKF](#) [6207-2Z SKF](#) [22209 E SKF](#) [32011 X/Q SKF](#) [6209-2Z SKF](#) [6210-2Z SKF](#) [6211-2Z/C3 SKF](#) [HK 2016 SKF](#) [HK 3520 SKF](#) [NA 4903 SKF](#) [SY 25 TF SKF](#) [51124 SKF](#) [61902-2RS1 SKF](#) [6309-2RS1 SKF](#) [HK 1212 SKF](#) [6011-2Z SKF](#) [625 SKF](#) [PCM 050708 E SKF](#) [PCM 121420 E SKF](#) [30209 SKF](#) [6004-2RSH/C3 SKF](#) [629-2Z SKF](#) [6305-2Z SKF](#) [629-2RSH SKF](#) [32306 J2/Q SKF](#) [6007-2RS1/C3 SKF](#) [6010-2Z SKF](#) [62201-2RS1 SKF](#) [6309-2Z SKF](#) [GE 30 ES SKF](#) [YAR 204-2F SKF](#) [22212 E SKF](#) [6213-2Z/C3 SKF](#) [6310-2RS1/C3 SKF](#) [SY 30 TF SKF](#) [NK 8/12 TN SKF](#) [BA 6 SKF](#) [6307-2Z SKF](#) [6212/C3 SKF](#) [6302-2Z/C3 SKF](#) [7304 BEP SKF](#) [AXK 1730 SKF](#) [YET 205 SKF](#) [6212-2RS1 SKF](#) [6009-2RS1/C3 SKF](#) [32014 X SKF](#) [6010-2RS1 SKF](#) [6208-2Z SKF](#) [1205 ETN9 SKF](#)