

W 619/6-2Z

- Popular item

Deep groove ball bearings

Bearing data

[Tolerances,](#)

Normal (metric), P6, P5, Normal (inch),

[Radial internal clearance,](#)

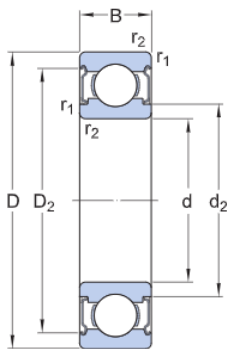
Classes C2 to C5

Bearing interfaces

[Seat tolerances for standard conditions,](#)

[Tolerances and resultant fits](#)

Technical specification

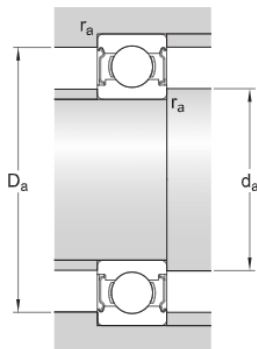


DIMENSIONS

d	6 mm	Bore diameter
D	15 mm	Outside diameter
B	5 mm	Width
d ₂	≈ 7.5 mm	Recess diameter
D ₂	≈ 13 mm	Recess diameter
r _{1,2}	min. 0.2 mm	Chamfer dimension

ABUTMENT DIMENSIONS

d _c min.	7.3 mm	Diameter of shaft abutment
d _c max.	7.4 mm	Diameter of shaft abutment
D _i max.	13.4 mm	Diameter of housing abutment
r _a max.	0.2 mm	Radius of shaft or housing fillet



CALCULATION DATA

Basic dynamic load rating	C	0.761 kN
Basic static load rating	C_0	0.265 kN
Fatigue load limit	P_u	0.011 kN
Reference speed		100 000 r/min
Limiting speed		50 000 r/min
Minimum load factor	k_f	0.025
Calculation factor	f_0	6.8

MASS

Mass bearing	0.004 kg
--------------	----------

TOLERANCE CLASS

Dimensional tolerances	Normal
Radial run-out	Normal

More information

Product details	Engineering information	Tools
Single row deep groove ball bearings	Principles of rolling bearing selection	Bearing Select
Stainless steel deep groove ball bearings	General bearing knowledge	SimPro Quick
Single row deep groove ball bearings with filling slots	Bearing selection process	Engineering Calculator
Double row deep groove ball bearings	Bearing interfaces	LubeSelect for SKF greases
Bearing data	Seat tolerances for standard conditions	Heater selection tool
Loads	Selecting internal clearance	Rolling bearings mounting and dismounting instructions
Temperature limits	Lubrication	
Permissible speed	Sealing, mounting and dismounting	
Designation system	Bearing failure and how to prevent it	

Terms and conditions

By accessing and using this website / app owned and published by AB SKF (publ.) (556007-3495 · Gothenburg) ("SKF"), you agree to the following terms and conditions:

Warranty Disclaimer and Limitation of Liability

Although every care has been taken to assure the accuracy of the information on this website / app, SKF provides this information "AS IS" and DISCLAIMS ALL WARRANTIES, EXPRESS OR IMPLIED, INCLUDING, BUT NOT LIMITED TO, IMPLIED WARRANTIES OF MERCHANTABILITY AND FITNESS FOR A PARTICULAR PURPOSE. You acknowledge that your use of this website / app is at your sole risk, that you assume full responsibility for all costs associated with use of this website / app, and that SKF shall not be liable for any direct, incidental, consequential, or indirect damages of any kind arising out of your access to, or use of the information or software made available on this website / app. Any warranties and representations in this website / app for SKF products or services that you purchase or use will be subject to the agreed upon terms and conditions in the contract for such product or service. Further, for non-SKF websites / apps that are referenced in our website / app or where a hyperlink appears, SKF makes no warranties concerning the accuracy or reliability of the information in these websites / apps and assumes no responsibility for material created or published by third parties contained therein. In addition, SKF does not warrant that this website / app or these other linked websites / apps are free from viruses or other harmful elements.

Copyright

Copyright in this website / app copyright of the information and software made available on this website / app rest with SKF or its licensors. All rights are reserved. All licensed material will reference the licensor that has granted SKF the right to use the material. The information and software made available on this website / app may not be reproduced, duplicated, copied, transferred, distributed, stored, modified, downloaded or otherwise exploited for any commercial use without the prior written approval of SKF. However, it may be reproduced, stored and downloaded for use by individuals without prior written approval of SKF. Under no circumstances may this information or software be supplied to third parties.

This website /app includes certain images used under license from Shutterstock, Inc.

Trademarks and Patents

All trademarks, brand names, and corporate logos displayed on the website / app are the property of SKF or its licensors, and may not be used in any way without prior written approval by SKF. All licensed trademarks published on this website / app reference the licensor that has granted SKF the right to use the trademark. Access to this website / app does not grant to the user any license under any patents owned by or licensed to SKF.

Changes

SKF reserves the right to make changes or additions to this website / app at any time.

X-ON Electronics

Largest Supplier of Electrical and Electronic Components

Click to view similar products for [SKF](#) manufacturer:

Other Similar products are found below :

[30204 J2/Q SKF](#) [6202-2Z/C3 SKF](#) [6207-2Z SKF](#) [22209 E SKF](#) [32011 X/Q SKF](#) [6209-2Z SKF](#) [6210-2Z SKF](#) [6211-2Z/C3 SKF](#) [HK 2016 SKF](#) [HK 3520 SKF](#) [NA 4903 SKF](#) [SY 25 TF SKF](#) [51124 SKF](#) [61902-2RS1 SKF](#) [6309-2RS1 SKF](#) [HK 1212 SKF](#) [6011-2Z SKF](#) [625 SKF](#) [PCM 050708 E SKF](#) [PCM 121420 E SKF](#) [30209 SKF](#) [6004-2RSH/C3 SKF](#) [629-2Z SKF](#) [6305-2Z SKF](#) [629-2RSH SKF](#) [32306 J2/Q SKF](#) [6007-2RS1/C3 SKF](#) [6010-2Z SKF](#) [62201-2RS1 SKF](#) [6309-2Z SKF](#) [GE 30 ES SKF](#) [YAR 204-2F SKF](#) [22212 E SKF](#) [6213-2Z/C3 SKF](#) [6310-2RS1/C3 SKF](#) [SY 30 TF SKF](#) [NK 8/12 TN SKF](#) [BA 6 SKF](#) [6307-2Z SKF](#) [6212/C3 SKF](#) [6302-2Z/C3 SKF](#) [7304 BEP SKF](#) [AXK 1730 SKF](#) [YET 205 SKF](#) [6212-2RS1 SKF](#) [6009-2RS1/C3 SKF](#) [32014 X SKF](#) [6010-2RS1 SKF](#) [6208-2Z SKF](#) [1205 ETN9 SKF](#)