

# BAT760WS

## SCHOTTKY BARRIER DIODE

### Features

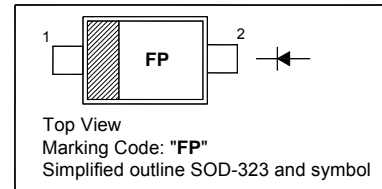
- Ultra high-speed switching
- Very low forward voltage
- Very small SMD plastic package

### Applications

- Ultra high-speed switching
- Voltage clamping
- Protection circuits

### PINNING

PIN	DESCRIPTION
1	Cathode
2	Anode



### Absolute Maximum Ratings ( $T_a = 25^\circ\text{C}$ )

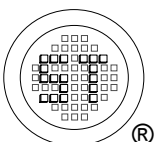
Parameter	Symbol	Value	Unit
Reverse Voltage	$V_R$	20	V
Continuous Forward Current	$I_F$	1	A
Non-repetitive Peak Forward Current (t = 8.3 ms Half Sine Wave, JEDEC method)	$I_{FSM}$	5	A
Junction Temperature	$T_J$	125	$^\circ\text{C}$
Operating Ambient Temperature Range	$T_{op}$	- 65 to + 125	$^\circ\text{C}$
Storage Temperature Range	$T_{stg}$	- 65 to + 150	$^\circ\text{C}$
Thermal Resistance from Junction to Ambient	$R_{\theta JA}$	220 <sup>1)</sup> 180 <sup>2)</sup>	K/W

<sup>1)</sup> Mounted on P.C.B. 10 X 10 mm<sup>2</sup> Cu

<sup>2)</sup> Mounted on P.C.B. 40 X 40 mm<sup>2</sup> Cu

### Characteristics at $T_a = 25^\circ\text{C}$

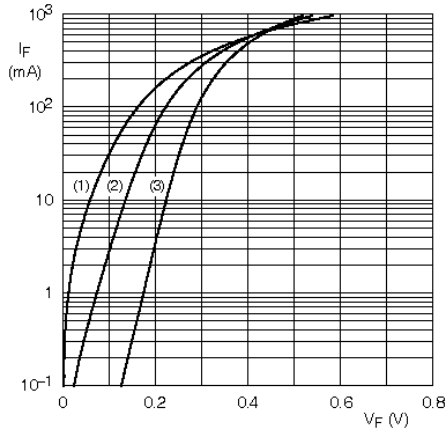
Parameter	Symbol	Typ.	Max.	Unit
Forward Voltage at $I_F = 10\text{ mA}$ at $I_F = 100\text{ mA}$ at $I_F = 1\text{ A}$	$V_F$	- - -	0.27 0.35 0.65	V
Reverse Current at $V_R = 5\text{ V}$ at $V_R = 8\text{ V}$ at $V_R = 15\text{ V}$	$I_R$	- - -	10 20 50	$\mu\text{A}$
Diode Capacitance at $V_R = 5\text{ V}$ , $f = 1\text{ MHz}$	$C_d$	25	-	pF



**SEMTECH ELECTRONICS LTD.**  
Subsidiary of Sino-Tech International (BVI) Limited

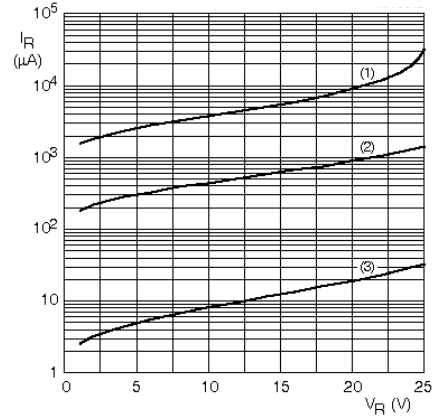


# BAT760WS



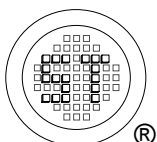
- (1)  $T_{amb} = 85\text{ }^{\circ}\text{C}$ .
- (2)  $T_{amb} = 25\text{ }^{\circ}\text{C}$ .
- (3)  $T_{amb} = -40\text{ }^{\circ}\text{C}$ .

Forward current as a function of forward voltage; typical values.



- (1)  $T_{amb} = 125\text{ }^{\circ}\text{C}$ .
- (2)  $T_{amb} = 85\text{ }^{\circ}\text{C}$ .
- (3)  $T_{amb} = 25\text{ }^{\circ}\text{C}$ .

Reverse current as a function of reverse voltage; typical values.



**SEMTECH ELECTRONICS LTD.**  
Subsidiary of Sino-Tech International (BVI) Limited

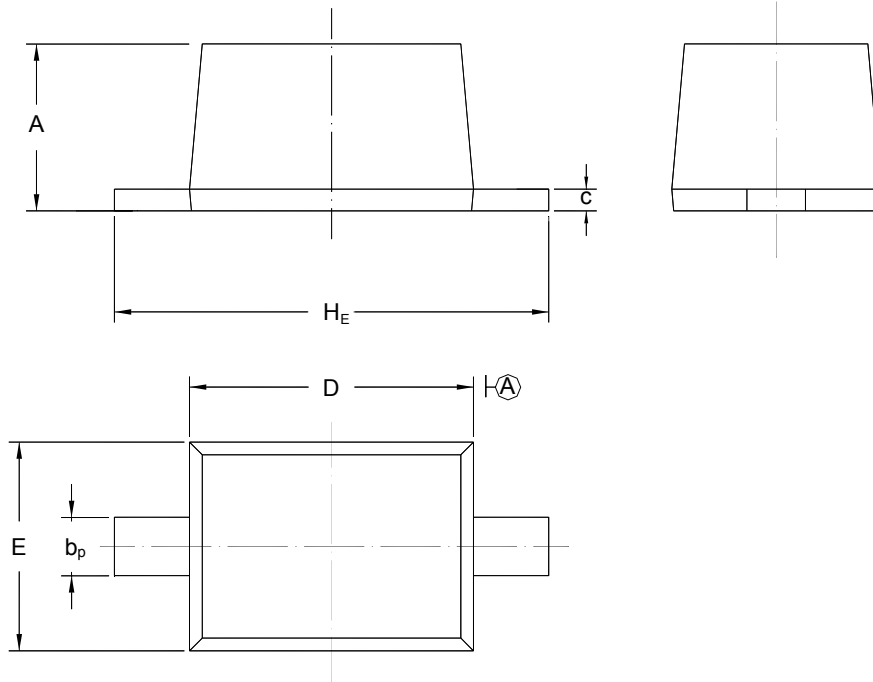


# BAT760WS

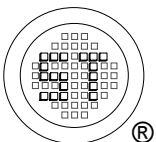
## PACKAGE OUTLINE

Plastic surface mounted package; 2 leads

SOD-323



UNIT	A	b <sub>p</sub>	C	D	E	H <sub>E</sub>
mm	1.10 0.80	0.40 0.25	0.15 0.10	1.80 1.60	1.35 1.15	2.80 2.30



**SEMTECH ELECTRONICS LTD.**  
Subsidiary of Sino-Tech International (BVI) Limited



## X-ON Electronics

Largest Supplier of Electrical and Electronic Components

*Click to view similar products for [Schottky Diodes & Rectifiers](#) category:*

*Click to view products by [SLKORMICRO](#) manufacturer:*

Other Similar products are found below :

[CUS06\(TE85L,Q,M\)](#) [MA4E2039](#) [D1FH3-5063](#) [MBR0530L-TP](#) [MBR10100CT-BP](#) [MBR30H100MFST1G](#) [MMBD301M3T5G](#) [PMAD1103-LF](#) [PMAD1108-LF](#) [RB160M-50TR](#) [RB520S-30](#) [RB551V-30](#) [DD350N18K](#) [DZ435N40K](#) [DZ600N16K](#) [BAS16E6433HTMA1](#) [BAS 3010S-02LRH E6327](#) [BAT 54-02LRH E6327](#) [IDL02G65C5XUMA1](#) [NSR05F40QNXT5G](#) [NSVR05F40NXT5G](#) [JANS1N6640](#) [SB07-03C-TB-H](#) [SB1003M3-TL-W](#) [SBAT54CWT1G](#) [SBM30-03-TR-E](#) [SBS818-TL-E](#) [SK32A-LTP](#) [SK33A-TP](#) [SK34A-TP](#) [SK34B-TP](#) [SMD1200PL-TP](#) [ACDBN160-HF](#) [SS3003CH-TL-E](#) [STPS30S45CW](#) [PDS3100Q-7](#) [GA01SHT18](#) [CRS10I30A\(TE85L,QM\)](#) [MBR1240MFST1G](#) [MBRB30H30CT-1G](#) [BAS28E6433HTMA1](#) [BAS 70-02L E6327](#) [HSB123JTR-E](#) [JANTX1N5712-1](#) [VS-STPS40L45CW-N3](#) [DD350N12K](#) [SB007-03C-TB-E](#) [SB10015M-TL-E](#) [SB1003M3-TL-E](#) [SK110-LTP](#)