

Silicon Bidirectional Trigger Diodes

FEATURES

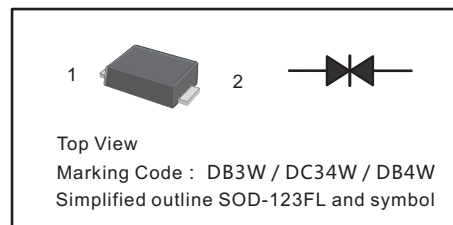
These diacs are intended for use in thyristor phase control. circuits for lamp-dimming. universal-motor speed controls. and heat controls.

MECHANICAL DATA

- Case: SOD-123FL
- Terminals: Solderable per MIL-STD-750, Method 2026
- Approx. Weight: 15mg 0.00048oz

PINNING

PIN	DESCRIPTION
1	Cathode
2	Anode



Absolute Maximum Ratings (Ta = 25°C)

Parameter	Symbol	Value	Unit
Power Dissipation (T _c = 100°C)	P _{tot}	150	mW
Repetitive Peak On-state Current (tp = 20 μs, f = 100 Hz)	I _{TRM}	2	A
Operating Junction and Storage Temperature Range	T _j , T _{stg}	- 40 to + 125	°C

Characteristics at Ta = 25°C

Parameter		Symbol	Min.	Max.	Unit
Breakover Voltage at C = 22 nF, see diagram 1	DB3W	V _{BO}	28	36	V
	DC34W		30	38	V
	DB4W		35	45	V
Breakover Voltage Symmetry at C = 22 nF, see diagram 1		[+V _{BO} - -V _{BO}]	—	3	V
Dynamic Breakover Voltage at ΔI = [I _{BO} to I _F = 10 mA]		ΔV ±	5	—	V
Output Voltage See diagram 2		V _O	5	—	V
Breakover Current at C = 22 nF		I _{BO}	—	50	μA
Leakage Current at V _B = 0.5V _{BOmax}		I _B	—	10	μA
Rise Time See diagram 3		t _r	—	2	μs

Diagram1: current-voltage characteristic

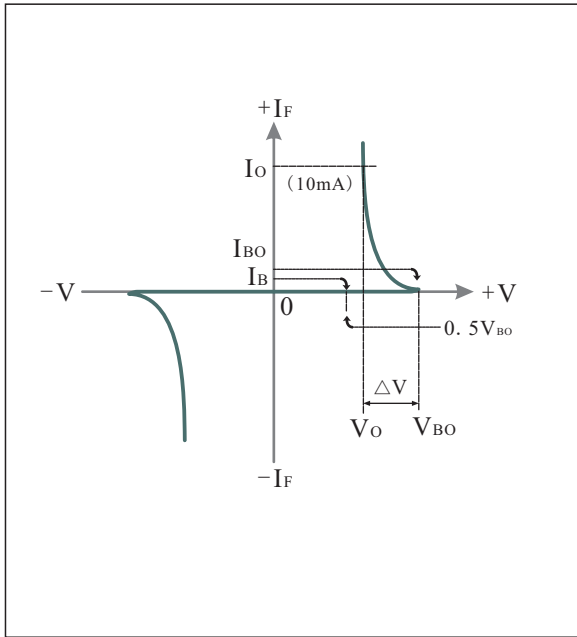


Diagram2: Test circuit for output voltage

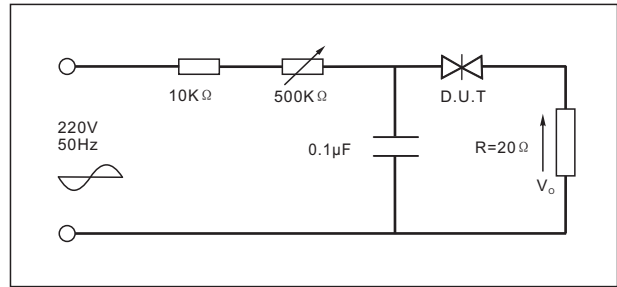


Diagram3: Test circuit see Fig.2. Adjust R for $I_p=0.5A$

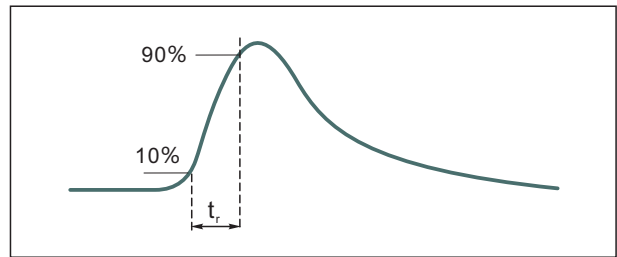


Fig.1: Power dissipation versus ambient temperature(maximum values)

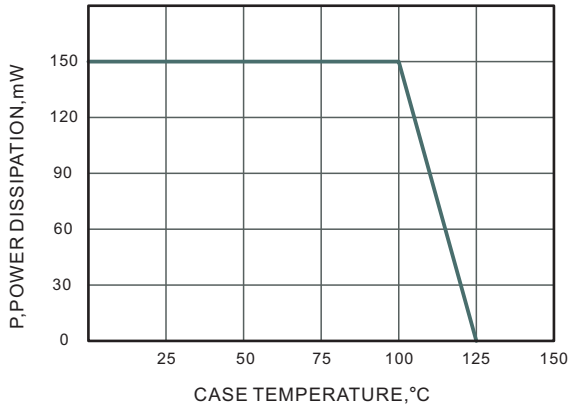


Fig.2: Power dissipation versus ambient temperature(maximum values)

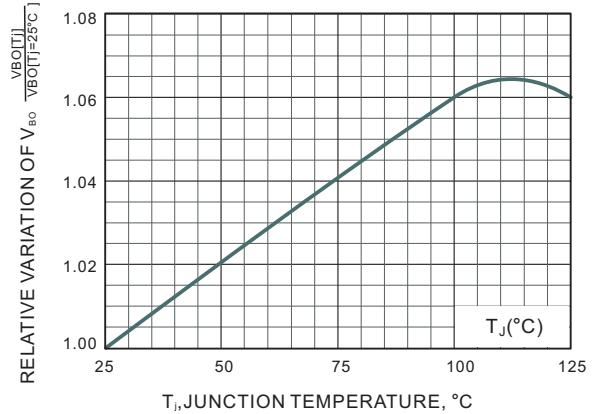
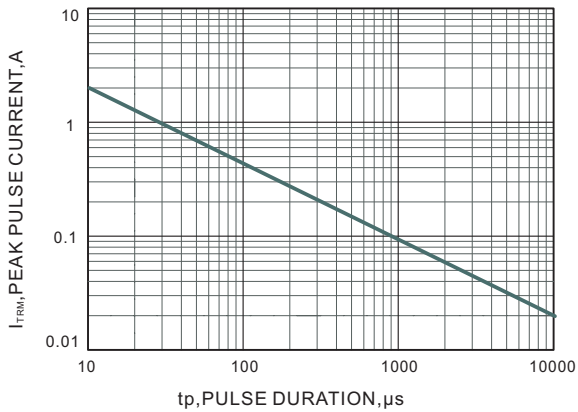


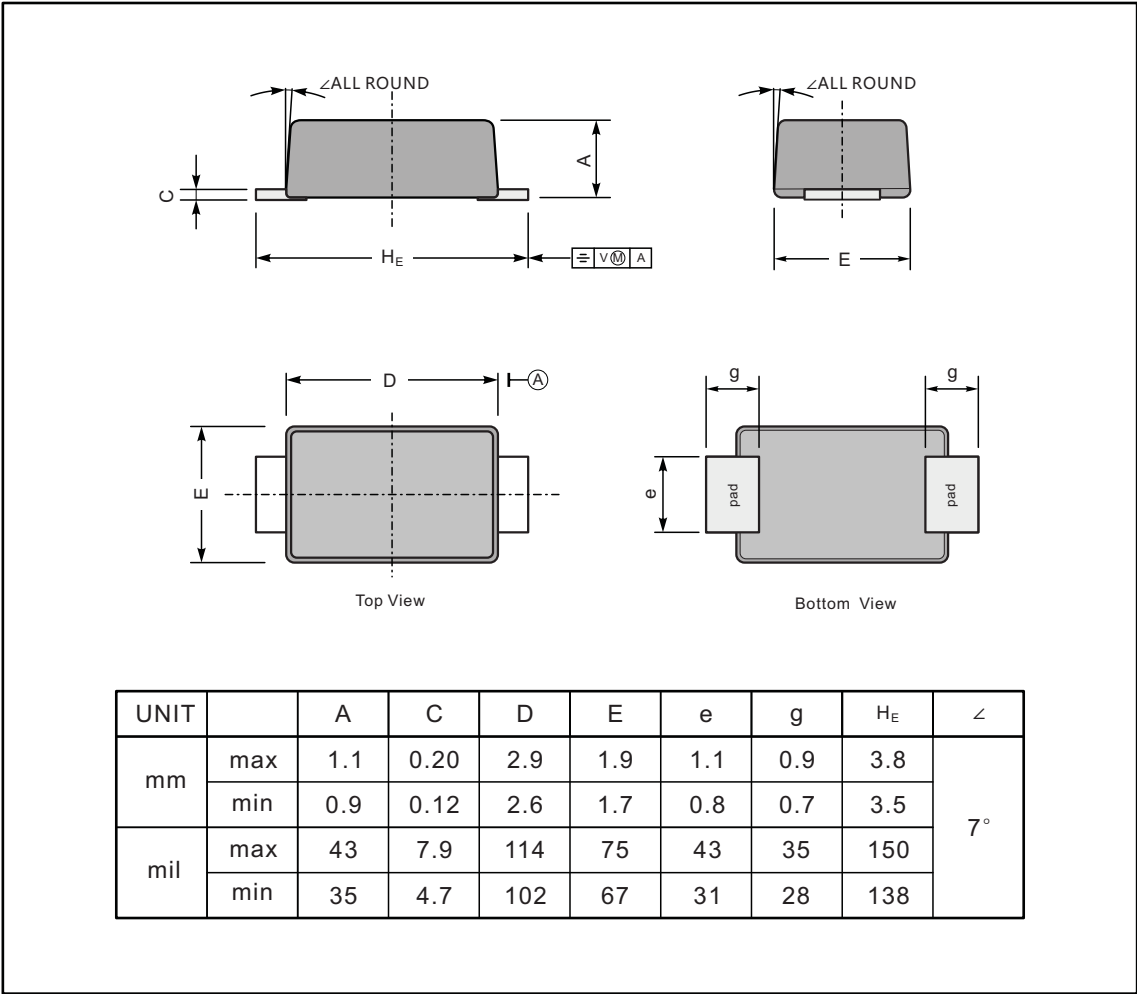
Fig.3: Power dissipation versus ambient temperature(maximum values)



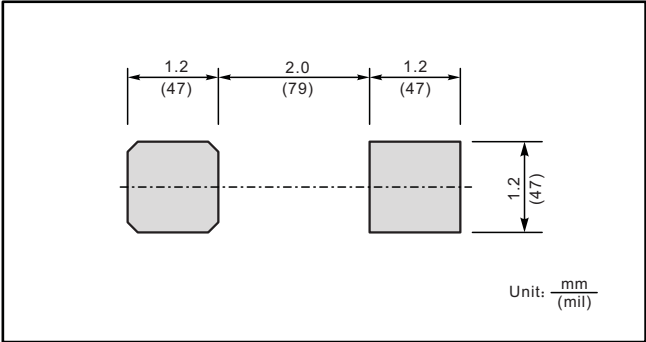
PACKAGE OUTLINE

Plastic surface mounted package; 2 leads

SOD-123FL



The recommended mounting pad size



X-ON Electronics

Largest Supplier of Electrical and Electronic Components

Click to view similar products for [Diacs](#) category:

Click to view products by [SLKORMICRO](#) manufacturer:

Other Similar products are found below :

[DB3](#) [LLDB3](#) [DB3](#) [DB3PF](#) [DB3W](#) [DB4](#) [DB3W](#) [LLDB3PF](#) [DLDB3](#) [DB3](#) [NTE6407](#) [DB3TG](#) [DB3](#) [DB4](#) [DB4](#) [NTE6412](#) [DB3-22](#) [LLDB3](#)
[DB4](#) [NTE6408](#) [NTE6411](#) [BEP0080SB](#) [BEP0300SC](#) [BEP3500SB](#) [BR100-03LLD](#) [BR100-04LLD](#) [2SC2983](#) [DB31](#) [DB32](#) [DB6](#) [DC34](#) [DB3](#)
[DB3W](#) [DB3](#) [K150SAW](#) [K150](#) [SODDB3](#) [DB3](#) [DB4](#) [SMDB3](#) [TMMDB3](#) [TMMDB3TG](#)