

Bidirectional Ultra Low Capacitance TVS Array

DESCRIPTION

The GBLC03C Series are ultra low capacitance transient voltage suppressor arrays, designed to protect applications such as portable electronics and SMART phones. This series is available in both unidirectional and bidirectional configurations and is rated at 350 Watts for an 8/20 μ s waveshape.

The GBLC03C and Series meets IEC 61000-4-2 (ESD) and IEC 61000-4-4 (EFT) requirements. At higher operating frequencies or faster edge rates, insertion loss and signal integrity are a major concern. This series offers a ultra low capacitance and low leakage current in a miniature SOD-323 package.

APPLICATIONS

- ◇ Cell Phone Handsets and Accessories
- ◇ Microprocessor based equipment
- ◇ Personal Digital Assistants (PDA's)
- ◇ Notebooks, Desktops, and Servers
- ◇ Portable Instrumentation
- ◇ Peripherals
- ◇ USB Interface

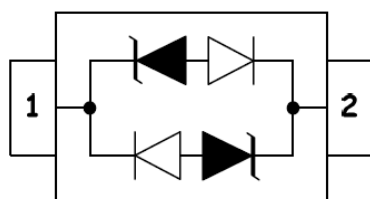
FEATURES

- ◇ IEC61000-4-2 (ESD) \pm 15kV (air), \pm 8kV (contact)
- ◇ IEC61000-4-4 (EFT) 40A (5/50 η s)
- ◇ IEC61000-4-5 (Lightning) 12A (8/20 μ s)
- ◇ Protects one I/O line (bidirectional)
- ◇ Low clamping voltage
- ◇ Working voltages : 3V, 5V, 8V, 12V, 15V, 24V
- ◇ Low leakage current
- ◇ Response Time is < 1 ns

MACHANICAL DATA

- ◇ SOD-323 package
- ◇ Flammability Rating: UL 94V-0
- ◇ Packaging: Tape and Reel
- ◇ High temperature soldering guaranteed:260 $^{\circ}$ C/10s
- ◇ Reel size: 7 inch
- ◇ Quantity per reel: 3,000pcs

PIN CONFIGURATION



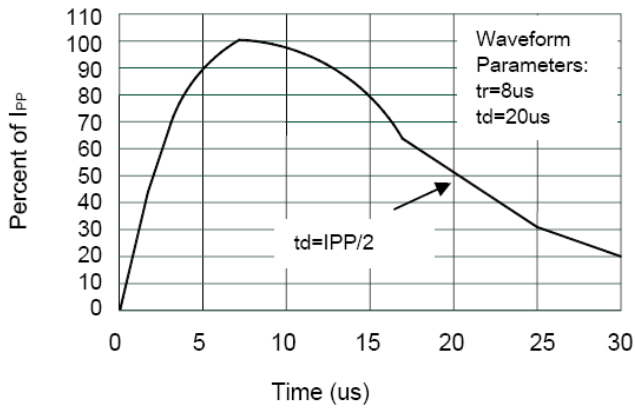
PACKAGE OUTLINE



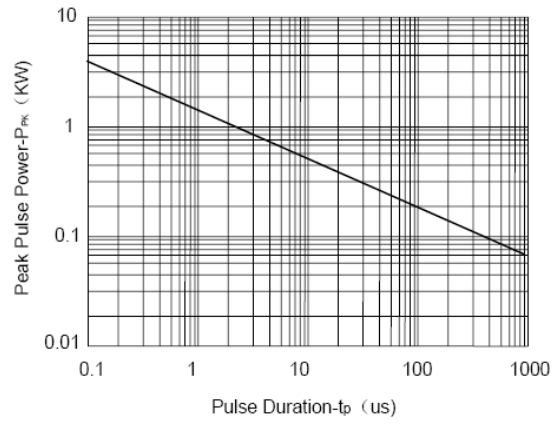
| ABSOLUTE MAXIMUM RATING | | | |
|-------------------------|---------------------------------|----------|--------------|
| Symbol | Parameter | Value | Units |
| V_{ESD} | ESD per IEC 61000-4-2 (Air) | ± 15 | kV |
| | ESD per IEC 61000-4-2 (Contact) | ± 8 | |
| P_{PP} | Peak Pulse Power (8/20 μ s) | 300 | W |
| T_{OPT} | Operating Temperature | -55/+150 | $^{\circ}$ C |
| T_{STG} | Storage Temperature | -55/+150 | $^{\circ}$ C |
| T_L | Lead Soldering Temperature | 260 | $^{\circ}$ C |

| ELECTRICAL CHARACTERISTICS (Tamb=25 $^{\circ}$ C) | | | | | | | | | |
|---|----------------|---------------|---------------|-------|---------------|---------------|------|----------------------|----------------|
| PART NUMBER | DEVICE MARKING | V_{RWM} | V_B | I_T | $V_C@1$ | V_C | | I_R | C_T |
| | | (V) (max.) | (V) (min.) | (mA) | (V) (max.) | (V) (max.) | (@A) | (μ A) (max.) | (pF) (typ.) |
| GBLC03C | 3B | 3.0 | 4.0 | 1 | 7.0 | 13.9 | 8 | 2 | 0.8 |
| GBLC05C | AC | 5.0 | 6.0 | 1 | 9.8 | 18.3 | 8 | 1 | 0.8 |
| GBLC08C | BC | 8.0 | 8.5 | 1 | 13.4 | 18.5 | 8 | 1 | 0.8 |
| GBLC12C | DC | 12.0 | 13.3 | 1 | 19.0 | 28.6 | 6 | 1 | 0.8 |
| GBLC15C | EC | 15.0 | 16.7 | 1 | 24.0 | 31.8 | 5 | 1 | 0.8 |
| GBLC24C | HC | 24.0 | 26.7 | 1 | 43.0 | 56.0 | 3 | 1 | 0.8 |

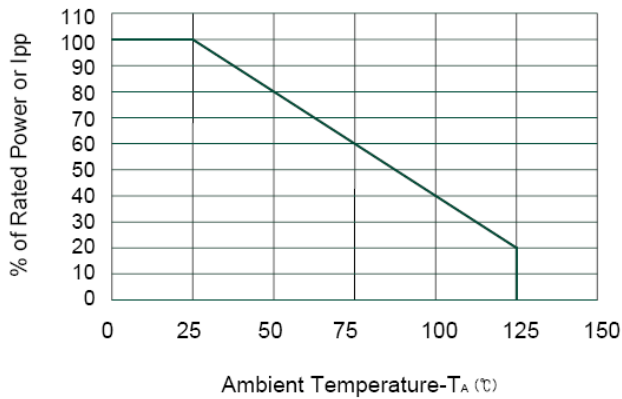
ELECTRICAL CHARACTERISTICS CURVE



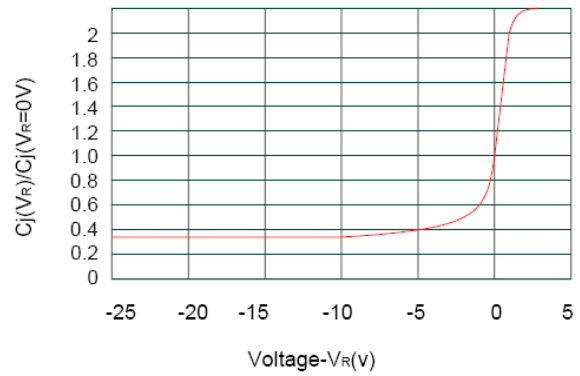
Pulse Waveform



Non-Repetitive Peak Pulse Power vs. Pulse Time

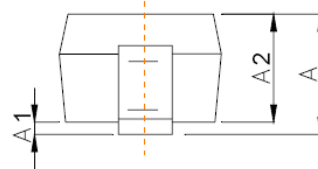
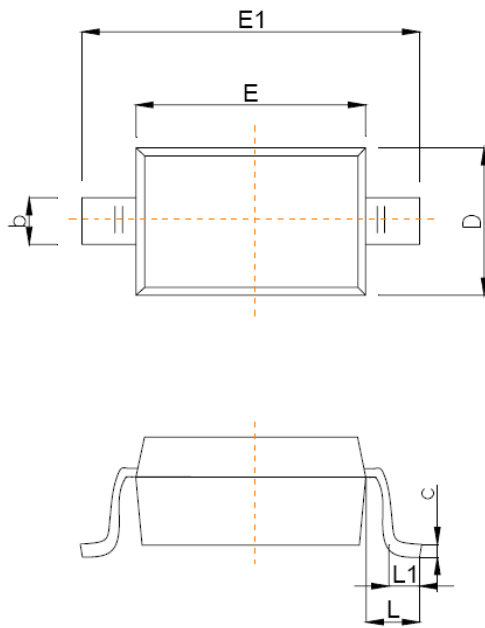


Power Derating Curve

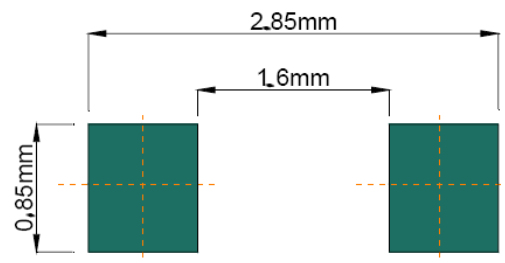


Junction Capacitance vs. Reverse Voltage

SOD-323 PACKAGE OUTLINE DIMENSIONS



| Symbol | Dimensions In Millimeters | |
|--------|---------------------------|-------|
| | Min | Max |
| A | | 1.00 |
| A1 | 0.000 | 0.100 |
| A2 | 0.800 | 0.900 |
| b | 0.250 | 0.350 |
| c | 0.080 | 0.150 |
| D | 1.200 | 1.400 |
| E | 1.600 | 1.800 |
| E1 | 2.500 | 2.700 |
| e | 1.800 | 2.040 |
| L | 0.475 REF | |
| L1 | 0.250 | 0.400 |
| θ | 0° | 8° |



Recommended Pad outline

X-ON Electronics

Largest Supplier of Electrical and Electronic Components

Click to view similar products for [ESD Suppressors / TVS Diodes](#) category:

Click to view products by [SLKORMICRO](#) manufacturer:

Other Similar products are found below :

[60KS200C](#) [D18V0L1B2LP-7B](#) [D5V0F4U5P5-7](#) [NTE4902](#) [P4KE27CA](#) [P6KE11CA](#) [P6KE8.2A](#) [SA60CA](#) [SA64CA](#) [SMBJ12CATR](#)
[SMBJ33CATR](#) [SMBJ6.5A](#) [SMBJ8.0A](#) [ESD101-B1-02ELS E6327](#) [ESD112-B1-02EL E6327](#) [ESD7451N2T5G](#) [19180-510](#) [CPDT-5V0USP-](#)
[HF](#) [3.0SMCJ33CA-F](#) [3.0SMCJ36A-F](#) [HSPC16701B02TP](#) [JANTX1N6126A](#) [D3V3Q1B2DLP3-7](#) [D55V0M1B2WS-7](#) [SCM1293A-04SO](#)
[ESD200-B1-CSP0201 E6327](#) [SM12-7](#) [CEN955 W/DATA](#) [VESD12A1A-HD1-GS08](#) [CPDQC5V0-HF](#) [D1213A-01LP4-7B](#) [ESD101-B1-02EL](#)
[E6327](#) [AOZ8808DI-03](#) [5KP15A](#) [5KP48A](#) [5KP90A](#) [ESD3V3D7-TP](#) [15KPA36A-LF](#) [P4KE56CA](#) [P4KE68A](#) [P4KE91CATR](#) [P6KE120A](#)
[P6KE13CA](#) [P6KE43CA](#) [P6KE6.8CA](#) [P6KE8.2](#) [P6SMBJ20CA](#) [JANTX1N6072A](#) [SR2835ESKG](#) [SA90CA](#)