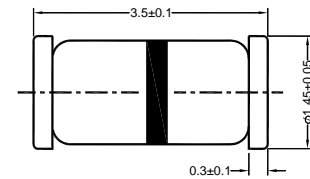


Silicon Bidirectional Trigger Diodes

These diacs are intended for use in thyristor phase control, circuits for lamp-dimming, universal-motor speed controls, and heat controls.

LL-34



Glass Case Mini MELF
Dimensions in mm

Absolute Maximum Ratings ($T_a = 25\text{ }^\circ\text{C}$)

Parameter	Symbol	Value	Unit
Power Dissipation ($T_a = 65\text{ }^\circ\text{C}$)	P_{tot}	150	mW
Repetitive Peak On-state Current ($t_p = 20\text{ }\mu\text{s}$, $f = 100\text{ Hz}$)	I_{TRM}	2	A
Operating Junction and Storage Temperature Range	T_j, T_{stg}	- 40 to + 125	$^\circ\text{C}$

Characteristics at $T_a = 25\text{ }^\circ\text{C}$

Parameter	Symbol	Min.	Max.	Unit
Breakover Voltage at $C = 22\text{ nF}$, see diagram 1	V_{BO}	28	36	V
		LLDB3	35	
Breakover Voltage Symmetry at $C = 22\text{ nF}$, see diagram 1	$[+V_{\text{BO}} - -V_{\text{BO}}]$	-	3	V
Dynamic Breakover Voltage at $\Delta I = [I_{\text{BO}} \text{ to } I_{\text{F}} = 10\text{ mA}]$	$ \Delta V_{\pm} $	5	-	V
Output Voltage See diagram 2	V_{O}	5	-	V
Breakover Current at $C = 22\text{ nF}$	I_{BO}	-	50	μA
Leakage Current at $V_{\text{B}} = 0.5 V_{\text{BO max}}$	I_{B}	-	10	μA
Rise Time See diagram 3	t_r	-	2	μs

Diagram 1: Current-voltage characteristics

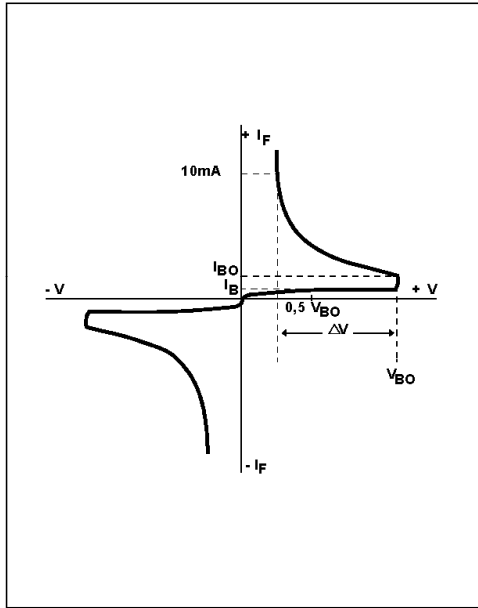


Fig. 1: Power dissipation versus ambient temperature (maximum values)

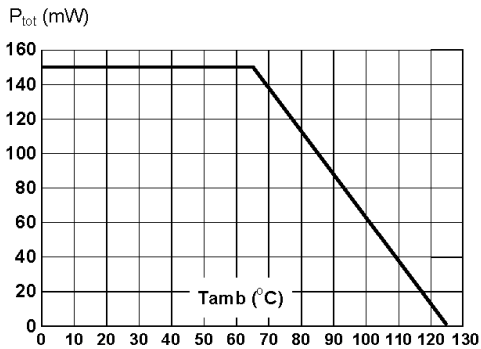


Fig. 3: Peak pulse current versus pulse duration (maximum values)

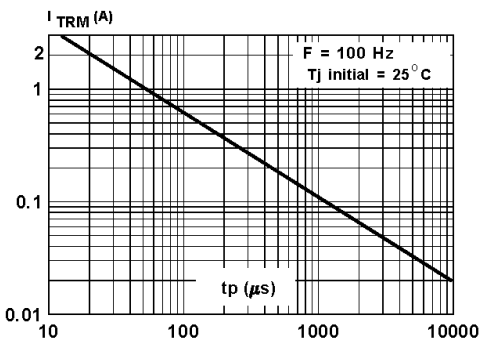


Diagram 2: Test circuit for output voltage

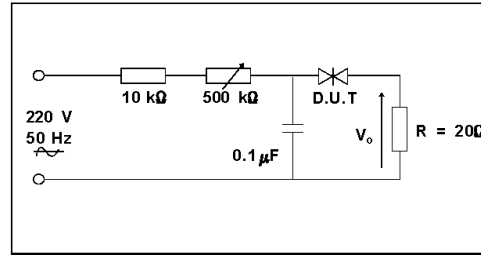


Diagram 3: Test circuit see diagram 2. Adjust R for $I_p=0.5A$

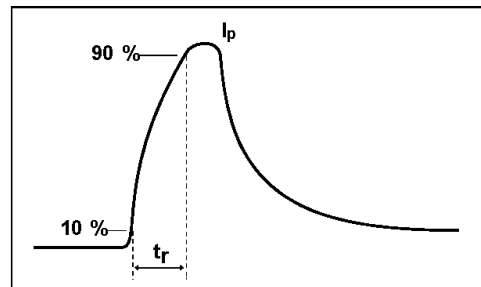
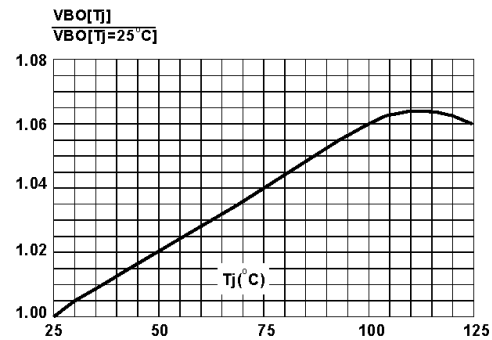


Fig. 2: Relative variation of V_{BO} versus junction temperature (typical values)



X-ON Electronics

Largest Supplier of Electrical and Electronic Components

Click to view similar products for [Diacs](#) category:

Click to view products by [SLKORMICRO](#) manufacturer:

Other Similar products are found below :

[LLDB3](#) [K220SA](#) [LLDB4](#) [LLDB3](#) [LLDB3](#) [DB4 TB](#) [K105S](#) [K220SB](#) [K150SA](#) [K180SA](#) [DB3 TB](#) [DB3](#) [DB3](#) [NTE6407](#) [DB3TG](#) [DB3](#) [DB4](#)
[DB4](#) [NTE6412](#) [DB3-22](#) [LLDB3](#) [DB4](#) [NTE6408](#) [NTE6411](#) [BEP0080SB](#) [BEP0300SC](#) [BEP3500SB](#) [BR100-03LLD](#) [BR100-04LLD](#)
[2SC2983](#) [DB31](#) [DB32](#) [DB6](#) [DC34](#) [DB3](#) [DB3](#) [DB3PF](#) [DB4](#) [DB3](#) [DB3](#) [LLDB3](#) [LLDB3PF](#) [LLDB3](#) [DB3W](#) [LLDB3](#) [DB3](#) [K150SAW](#)
[K150](#) [K240SB](#) [K200SB](#)