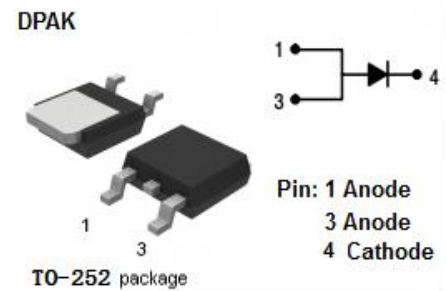


## Schottky Barrier Rectifier

### FEATURES

- Schottky barrier chip
- Low Power Loss,High Efficiency
- Guard ring for transient protection
- High Operating Junction Temperature
- Minimum Lot-to-Lot variations for robust device performance and reliable operation



### APPLICATIONS

- For use in high frequency rectifier of switching mode power supplies, freewheeling diodes, DC-to-DC converters or polarity protection application.

### ABSOLUTE MAXIMUM RATINGS(Ta=25°C)

SYMBOL	PARAMETER	VALUE	UNIT
V <sub>RRM</sub> V <sub>RMS</sub> V <sub>R</sub>	Peak Repetitive Reverse Voltage RMS Voltage DC Blocking Voltage	35	V
I <sub>F(AV)</sub>	Average Rectified Forward Current	8	A
I <sub>FSM</sub>	Non-repetitive Peak Surge Current 8.3ms single half sine-wave superimposed on rated load conditions	175	A
T <sub>J</sub>	Junction Temperature	-65~125	°C
T <sub>stg</sub>	Storage Temperature Range	-65~150	°C

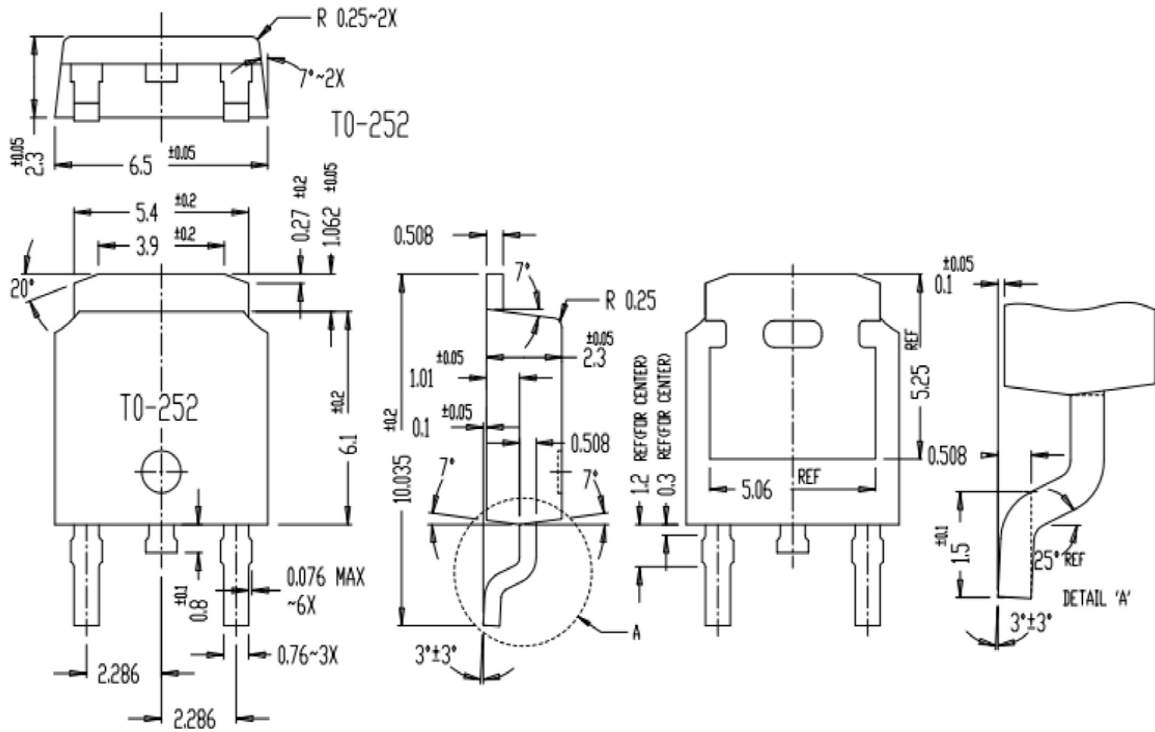
**THERMAL CHARACTERISTICS**

SYMBOL	PARAMETER	MAX	UNIT
R <sub>th j-c</sub>	Thermal Resistance, Junction to Case	2.8	°C/W

**ELECTRICAL CHARACTERISTICS**

SYMBOL	PARAMETER	CONDITIONS	TYP	MAX	UNIT
V <sub>F</sub>	Maximum Instantaneous Forward Voltage	I <sub>F</sub> = 8 A ; T <sub>J</sub> = 25 °C		0.51	V
		I <sub>F</sub> = 8 A ; T <sub>J</sub> = 125 °C		0.41	
I <sub>R</sub>	Maximum Instantaneous Reverse Current	V <sub>R</sub> = V <sub>RRM</sub> ; T <sub>J</sub> = 25 °C		1.4	mA
		V <sub>R</sub> = V <sub>RRM</sub> ; T <sub>J</sub> = 100 °C		35	

**Package Dimensions**



## X-ON Electronics

Largest Supplier of Electrical and Electronic Components

*Click to view similar products for [Schottky Diodes & Rectifiers](#) category:*

*Click to view products by [SLKORMICRO](#) manufacturer:*

Other Similar products are found below :

[MA4E2039](#) [MA4E2508M-1112](#) [MBR1545CT](#) [MMBD301M3T5G](#) [RB160M-50TR](#) [D83C](#) [BAS16E6433HTMA1](#) [BAT 54-02LRH E6327](#)  
[NRVBAF360T3G](#) [NSR05F40QNXT5G](#) [NTE555](#) [JANS1N6640](#) [SK310-T](#) [SS3003CH-TL-E](#) [GA01SHT18](#) [CRS10I30A\(TE85L,QM](#)  
[MA4E2501L-1290](#) [MBRA140TRPBF](#) [MBRB30H30CT-1G](#) [BAT 15-04R E6152](#) [JANTX1N5712-1](#) [DMJ3940-000](#) [SB007-03C-TB-E](#)  
[SK33B-TP](#) [NRVBB20100CTT4G](#) [NRVBM120LT1G](#) [NTSB30U100CT-1G](#) [VS-6CWQ10FNHM3](#) [CRG04\(T5L,TEMQ\)](#) [ACDBA1100LR-HF](#)  
[ACDBA1200-HF](#) [ACDBA240-HF](#) [ACDBA3100-HF](#) [CDBQC0530L-HF](#) [CDBQC0240LR-HF](#) [ACDBA260LR-HF](#) [ACDBA1100-HF](#)  
[MA4E2502L-1246](#) [10BQ015-M3/5BT](#) [NRVBM120ET1G](#) [CRS08TE85LQM](#) [PMAD1108-LF](#) [B120Q-13-F](#) [1N5819T-G](#) [B0530WSQ-7-F](#)  
[PDS1040Q-13](#) [B160BQ-13-F](#) [SDM05U20CSP-7](#) [B140S1F-7](#) [HSM560Je3/TR13](#)