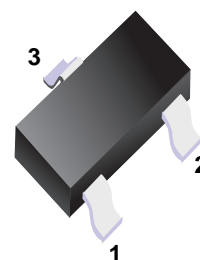


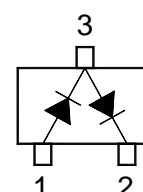
Silicon Epitaxial Schottky Barrier Diode

■ Features

- High reliability
- Low reverse current



■ Simplified outline(SOT-323)



■ Marking

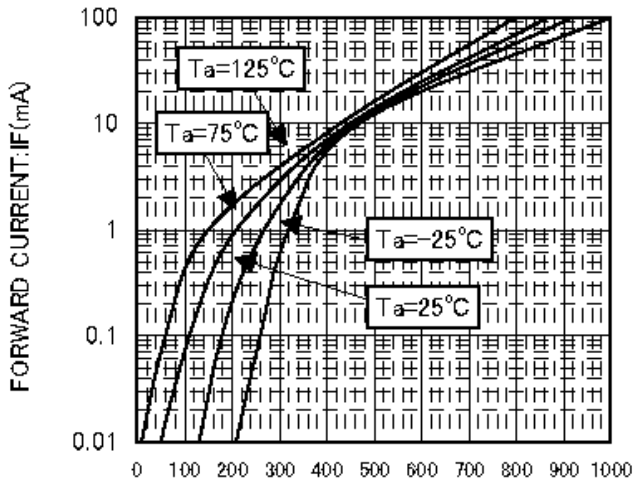
| | |
|---------|----|
| Marking | 3J |
|---------|----|

■ Absolute Maximum Ratings Ta = 25°C

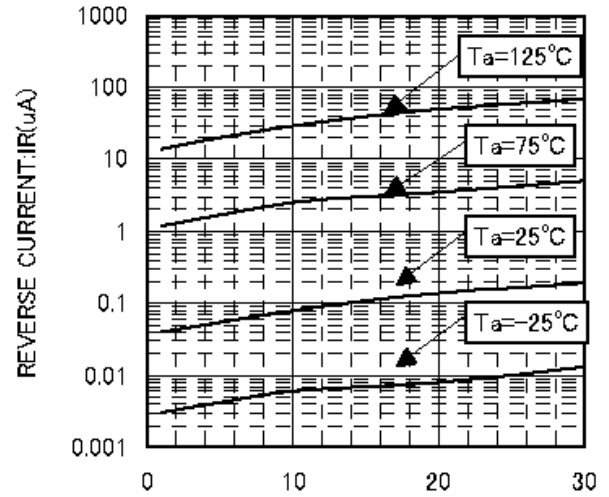
| Parameter | Symbol | Value | Unit |
|---|-------------|---------------|------|
| Repetitive Peak Reverse Voltage | V_{RM} | 45 | V |
| Reverse Voltage | V_R | 40 | V |
| Average Forward Rectified Current | $I_{F(AV)}$ | 30 | mA |
| Peak Forward Surge Current (t = 8.3 ms) | I_{FSM} | 200 | mA |
| Junction Temperature | T_j | 125 | °C |
| Storage Temperature Range | T_{stg} | - 55 to + 125 | °C |

■ Electrical Characteristics Ta = 25°C

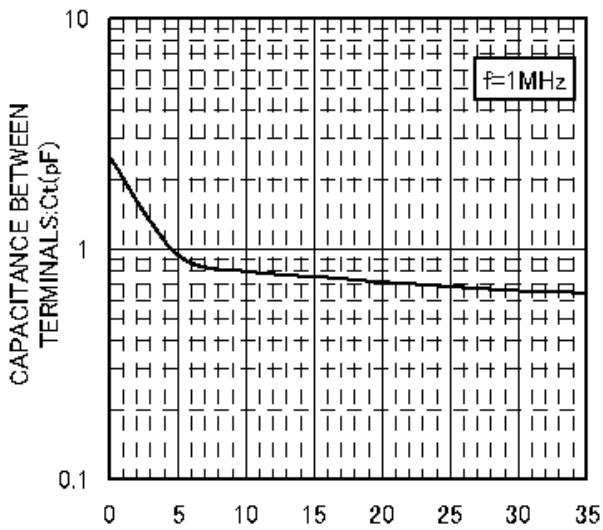
| Parameter | Symbol | Min. | Typ. | Max. | Unit |
|--|-------------|------|------|------|------|
| Forward Voltage at $I_F = 1$ mA | V_F | - | - | 0.37 | V |
| Reverse Current at $V_R = 10$ V | I_R | - | - | 1 | μA |
| Reverse Breakdown Voltage at $I_R = 10$ μA | $V_{(BR)R}$ | 45 | - | - | V |
| Capacitance between Terminals at $V_R = 1$ V, f = 1 MHz | C_T | - | 2 | - | pF |



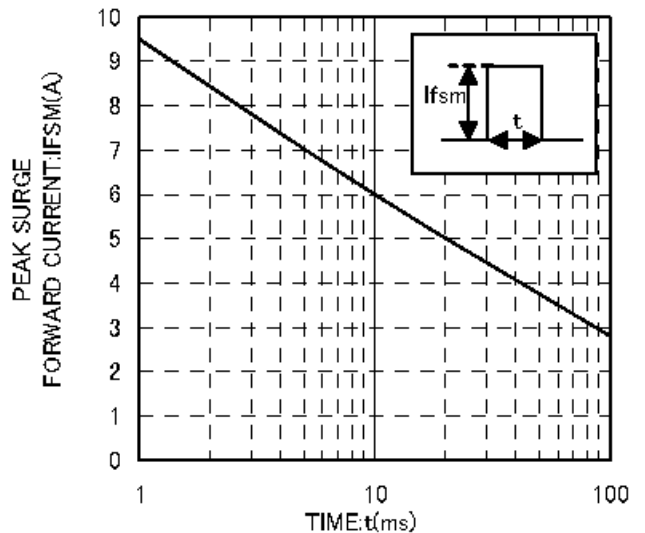
FORWARD VOLTAGE: VF(mV)
VF-IF CHARACTERISTICS



REVERSE VOLTAGE: VR(V)
VR-IR CHARACTERISTICS

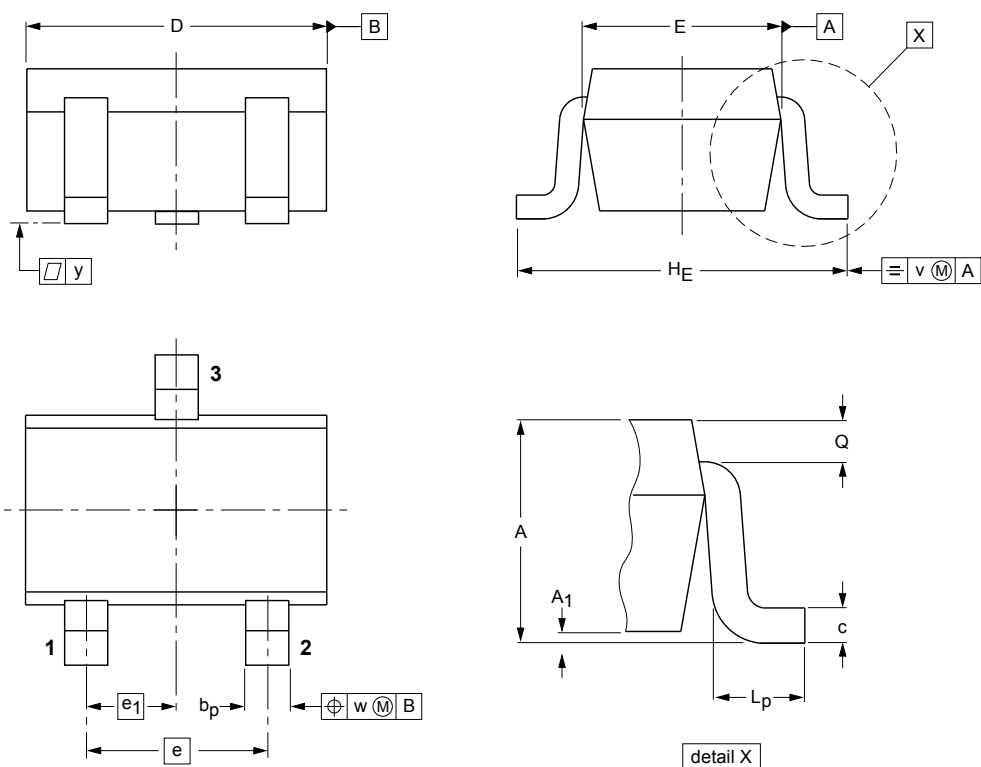


REVERSE VOLTAGE: VR(V)
VR-Ct CHARACTERISTICS



IFSM-t CHARACTERISTICS

■ SOT-323



DIMENSIONS (mm are the original dimensions)

| UNIT | A | A ₁ max | b _p | c | D | E | e | e ₁ | H _E | L _p | Q | v | w |
|------|------------|-----------------------|----------------|--------------|------------|--------------|-----|----------------|----------------|----------------|--------------|-----|-----|
| mm | 1.1 0.8 | 0.1 | 0.4 0.3 | 0.25 0.10 | 2.2 1.8 | 1.35 1.15 | 1.3 | 0.65 | 2.2 2.0 | 0.45 0.15 | 0.23 0.13 | 0.2 | 0.2 |

X-ON Electronics

Largest Supplier of Electrical and Electronic Components

Click to view similar products for [Schottky Diodes & Rectifiers](#) category:

Click to view products by [SLKORMICRO](#) manufacturer:

Other Similar products are found below :

[MA4E2039](#) [MA4E2508M-1112](#) [MBR1545CT](#) [MMBD301M3T5G](#) [RB160M-50TR](#) [D83C](#) [BAS16E6433HTMA1](#) [BAT 54-02LRH E6327](#)
[NRVBAF360T3G](#) [NSR05F40QNXT5G](#) [NTE555](#) [JANS1N6640](#) [SK310-T](#) [SS3003CH-TL-E](#) [GA01SHT18](#) [CRS10I30A\(TE85L,QM](#)
[MA4E2501L-1290](#) [MBRA140TRPBF](#) [MBRB30H30CT-1G](#) [BAT 15-04R E6152](#) [JANTX1N5712-1](#) [DMJ3940-000](#) [SB007-03C-TB-E](#)
[SK33B-TP](#) [NRVBB20100CTT4G](#) [NRVBM120LT1G](#) [NTSB30U100CT-1G](#) [VS-6CWQ10FNHM3](#) [CRG04\(T5L,TEMQ\)](#) [ACDBA1100LR-HF](#)
[ACDBA1200-HF](#) [ACDBA240-HF](#) [ACDBA3100-HF](#) [CDBQC0530L-HF](#) [CDBQC0240LR-HF](#) [ACDBA260LR-HF](#) [ACDBA1100-HF](#)
[MA4E2502L-1246](#) [10BQ015-M3/5BT](#) [NRVBM120ET1G](#) [CRS08TE85LQM](#) [PMAD1108-LF](#) [B120Q-13-F](#) [1N5819T-G](#) [B0530WSQ-7-F](#)
[PDS1040Q-13](#) [B160BQ-13-F](#) [SDM05U20CSP-7](#) [B140S1F-7](#) [HSM560Je3/TR13](#)