

AIR CYLINDER SERIES C85 BORE SIZES: Ø8, 10, 12, 16, 20, 25

- ✓ Conforms to CETOP RP52P and ISO 6432 standards
- ✓ Double or single acting models
- ✓ High speed actuation
- ✓ Auto switch sensing optional
- ✓ Special shaped rod seal gives high resistance to dust ingress
- ✓ Easy and accurate mounting
- ✓ Exceptional service life
- ✓ Non-rotate and double rod options are available
- ✓ Air Cushioning available



TECHNICAL SPECIFICATIONS

Bore size (mm)	8	10	12	16	20	25
Piston rod dia. (mm)	4	4	6	6	8	10
Piston rod thread	M4X0.7	M4X0.7	M6X1	M6X1	M8X1.25	M10X1.25
Ports	M5	M5	M5	M5	G½	G½
Action	Double acting: single + double rod, non rotating Single acting: spring return + extend, non-rotating					
Fluid	Air					
Proof pressure	15 Bar					
Max. operating pressure	10 Bar					
Min. operating pressure Double acting	1 Bar	0.8 Bar	0.5 Bar			
Min. operating pressure Single acting	2.2 Bar	1.8 Bar	1.3 Bar	2.3 Bar		
Ambient and fluid temperature	-20° - +80°C (Built-in magnet type: Max. 60°C)					
Cushion	Rubber cushion (standard)/Air cushion					
Lube	None (Non-lubricated)					
Piston speed	50 - 1500mm/s					
Allowable kinetic energy (J) (Rubber cushion)	0.02	0.03	0.04	0.09	0.27	0.40
Allowable kinetic energy (J) (Air cushion)	-	0.17	0.19	0.4	0.66	0.97
Stroke tolerance (mm)	0 / +1				0 / +1.4	
Non-rotating model accuracy	±1° 30'		±1°		±0° 42'	
Construction	Rod cover	Aluminium alloy (White alumite)				
	Cylinder tube	Stainless steel				
	Piston rod	Stainless steel			Carbon steel Hard chrome finish Ø20, Ø25 bores only	

INTERNATIONAL STANDARDS



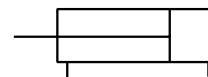
CETOP

ISO 6432 CETOP RP 52P

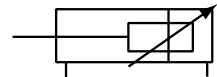
- See also SMC products: C65, C75, C92 and C95

SYMBOLS DOUBLE ACTING

Double Acting / Single Rod

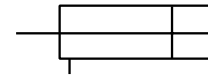


Rubber Cushion

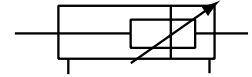


Air Cushion

Double Acting / Double Rod

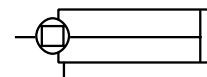


Rubber Cushion



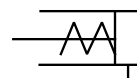
Air Cushion

Non-Rotation: Double Acting / Single Rod

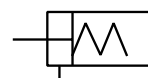


SYMBOLS SINGLE ACTING

Standard

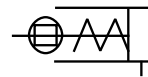


Spring return

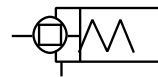


Spring extended

Non-rotating



Spring return



Spring extended



SEE INSIDE FRONT COVER FOR
DETAILS OF YOUR LOCAL SALES OFFICE



FOR FURTHER TECHNICAL
DETAILS ON THIS PRODUCT
CONTACT YOUR LOCAL
REGIONAL CENTRE

X-ON Electronics

Largest Supplier of Electrical and Electronic Components

Click to view similar products for [smc manufacturer](#):

Other Similar products are found below :

[G46-10-02-LN](#) [AC20A-F01-A](#) [AC20A-F02C-A](#) [AKM2000-F02-A](#) [AL40-F06-A](#) [AR30-F03H-A](#) [EAV4000-F04-5YO-Q](#) [KQ2E23-00NJ](#)
[KQ2H04-M5A](#) [KQ2L02-M3G](#) [KQ2Z06-02AS](#) [KQ2ZT10-02AS](#) [AFD20-F02C-A](#) [SY5220-5DO-01F-Q](#) [SY7220-5DO-02F-Q](#) [SY9320-5YO-](#)
[C10F-Q](#) [T0425BU-20](#) [T0425Y-20](#) [T1075W-100](#) [T1075W-20](#) [T1075Y-20](#) [T1209R-20](#) [TIA01W-20](#) [TU0212BU-20](#) [TU0212R-20](#) [TU0604B-](#)
[100](#) [TU0604C-100](#) [TU0604G-20](#) [TU0604YR-100](#) [TU0604YR-20](#) [TU0805G-20](#) [TU0805YR-20](#) [TU1065C-100](#) [TU1610C-20](#) [KQ2D06-02AS](#)
[KQ2LU06-02AS](#) [KQ2N06-M5A](#) [KQ2P-12](#) [KQ2W06-M5A](#) [EAV2000-F02-4YO-Q](#) [SY5420-5YO-C8F-Q](#) [T0425R-20](#) [T0604B-20](#) [T0806W-](#)
[20](#) [PF2W720-N04-67](#) [AF20-FO2C](#) [TU0805W-20](#) [TU0805R-100](#) [TU0805C-100](#) [TU0604Y-100](#)