

SLIDE SWITCH

Operation: SMT/贴片卧式 3PIN 小型 滑动开关 [柄长可定制]



LTEM NO.: MS-1290N (Series)

(L6.70mm×W2.75mm×H1.40mm SLIDE-SWITCH)

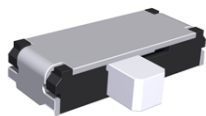
表面贴装 SMT

側向操作 LATERAL

精密部品 NICETY

可靠 STABILIZE

適合環保 RoHS

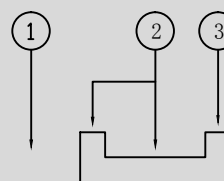


Technical parameter

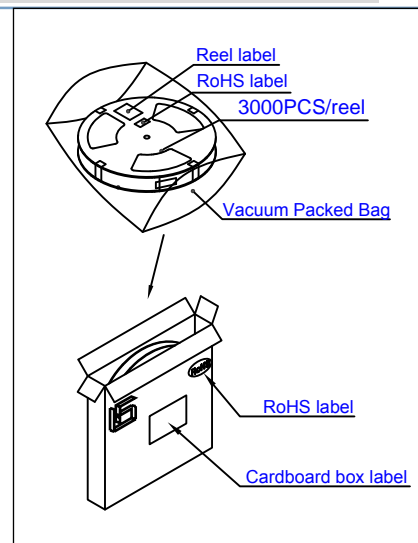
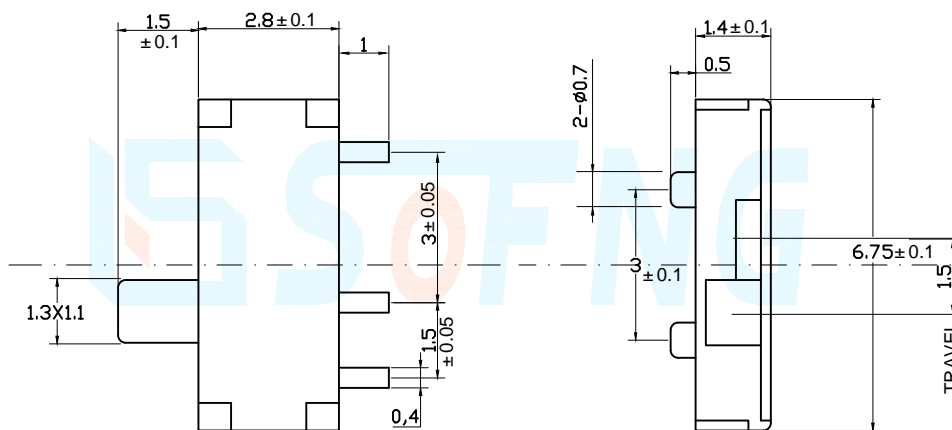
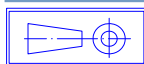
PROJECT	LEVEL	A[better product]	B[average product]
	Contact Rating	0.3A, 30V DC	
Electrical	Initial Contact Resistance	50mΩ max.	
Properties	Insulation Resistance	100MΩ min.500V DC	Skey/PD: 100MΩ min.300V DC
	Withstand Voltage	300V AC for 1 minute	250 V AC for 1 minut
Durable Performance	There No Load	15,000 Cycles	10,000 Cycles
	Rated Load	12,000 Cycles	8,500 Cycles
	Storage temp.	-25℃~+75℃(Operating Temp:)	
	Operating Force	1.6N. (1N.=100gram-force) ±0.5N	
	Heat Rrsistance	IR Reflow:255℃, 5sec. Manual :350℃, 3sec.	

Material declaration		
No.	NAME	Description
A	拨柄	PA46 耐热尼龙塑料
B	基座	LCP 30%G/F (Black)耐热塑胶
C	盖板	C5191R-H 磷铜[镀银]
D	弹片 1	Beryllium bronze 铍青铜[单面镀银]
E	嵌件	C5191R-H 磷铜[镀银] t=0.15mm
F	弹片 2	不锈钢 SUS304 t=0.2mm

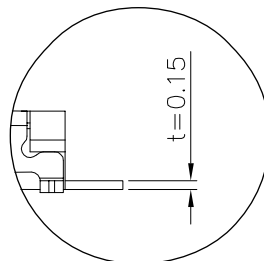
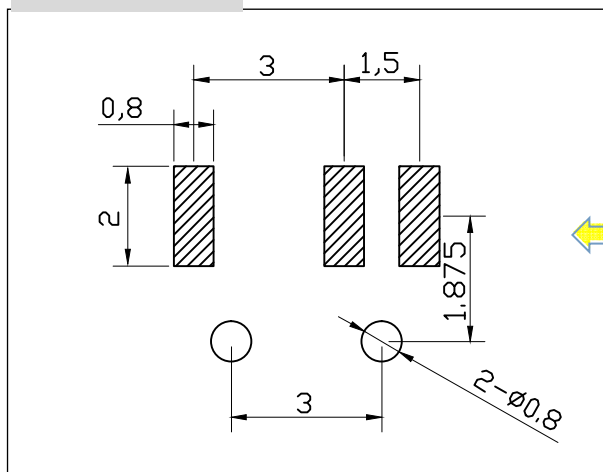
CIRCUIT DIAGRAM



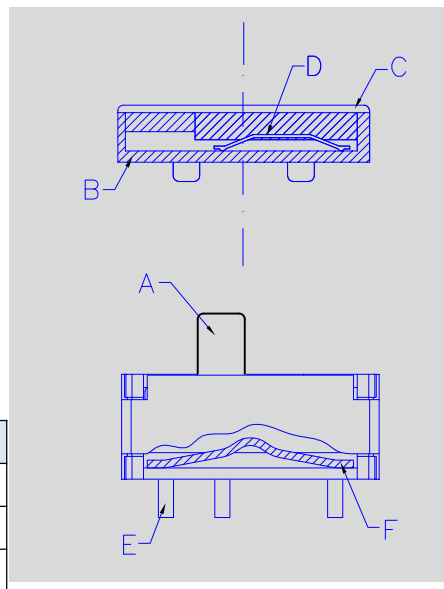
Unit:mm



P.C.B LAYOUT



DECIMALS	ANGLES
.X :±0.20	X.° :±1.5°
.XX :±0.10	X.X° :±1.0°
.XXX :±0.05	.XXX° :±0.5°



X-ON Electronics

Largest Supplier of Electrical and Electronic Components

Click to view similar products for [Slide Switches](#) category:

Click to view products by [SOFNG](#) manufacturer:

Other Similar products are found below :

[6-1437581-1](#) [M43R](#) [MHS123K15D](#) [MHS133K](#) [MMD](#) [MSS12A](#) [1825074-1](#) [1825160-3](#) [1825167-2](#) [1825289-7](#) [K232CB](#) [25139NLDB](#)
[25449NAH](#) [SLB1240R45](#) [1825078-1](#) [1825080-4](#) [1825269-1](#) [1825270-2](#) [STS141RA04](#) [T2215BEN506](#) [GH46P000001](#) [GH49P010001](#)
[25339NA](#) [25436NLDH](#) [M42A](#) [AYZ0202AG](#) [L203091MS02Q](#) [4-1437581-7](#) [48BFSP3M2QT](#) [1101M1S3ZB8E2](#) [1-1437581-1](#)
[EG1218REDACTUATOR](#) [MSS42G](#) [T105S1CWZBE](#) [SLB124145](#) [SLB1280R5](#) [TG39W000050](#) [25149NAH](#) [25439NAH](#) [25436NAH6](#)
[TG36Y000050](#) [SL-1211C1B8](#) [46204LRX](#) [1977143-4](#) [1977144-4](#) [HASS0194](#) [JS0001](#) [SSJ12R04](#) [GR5-1323-0800](#) [GH36Y410001](#)