

承 認 書



特点:

- MINI-PCI EXPRESS CONNECTORS, 适用于芯片、PCI 總線內部鏈接应用机器。
- 90° SMD 装の外接。

用途:

- 应用于移动、视听、汽车电子、多媒体、电器等各类相关产品。

東莞市碩方電子科技有限公司

[DONGGUAN SOFNG ELECTRONIC TECHNOLOGY Co., LTD]

樣品承認專項 [Sample Approval Drawing]

客戶名稱[Customer]

客戶料號[Customer P/N]

部品型號[Parts Model] PCIE-52P40H 式

技術參數[Parameters] 環境に優しい材料

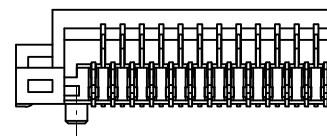
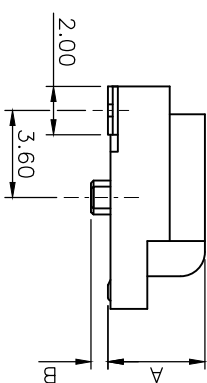
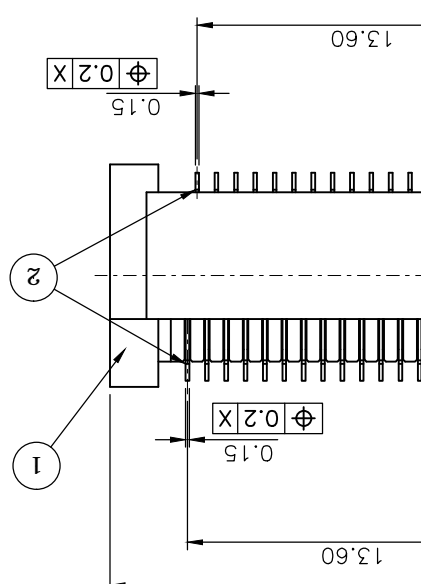
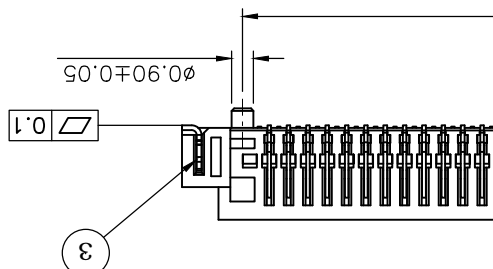
承認單位[3 Research Institute]:

工程部 [R&D]	品保部 [Q C]	采购部[Purchase]

客戶判定[Customer Determine]:

工程部 [R&D]	品保部 [Q C]	采购部[Purchase]
[章 承]	[章 承]	[章 承]

说明[Remnrk] 媒体排出方式：双响键式。



SPECIFICATION:

1. ELECTRICAL
 - 1.1 Current Rating: 0.5A per pin
 - 1.2 Voltage Rating: 50V DC
 - 1.3 Contact Resistance: 5 mΩ Max
 - 1.4 Insulation Resistance: 500MΩ Min
 - 1.5 Dielectric Withstanding Voltage: 300VAC
2. MECHANICAL
 - 2.1 Durability: 100 Cycle
 - 2.2 Insertion Force: 2.3kgf max.
 - 2.3 Extraction Force: 2.3kgf max.
3. ENVIRONMENTAL
 - 3.1 Operating temperature range: -40℃~+85℃
 - 3.2 Storage temperature range: -40℃~+85℃
4. SOLDER ABILITY
 - 4.1 Recommended IR Reflow Temperature: 260℃ 10Sec

NO.	PART NAME	DESCRIPTION
3	HOLDDOWN Brass C2680, Tin Plated	
2	CONTACT Phosphor Bronze C5210, Contact Area: Gold Flash Over Nickel	
1	HOUSING LCP UL94V-0, Black	

UNITS: DECIMAL LINEAR ANGLES		UNLESS OTHERWISE SPECIFIED TOLERANCE	
X	±0.50	°	±5°
X.X	±0.25	°	±3°
X.XX	±0.12	°	±1°

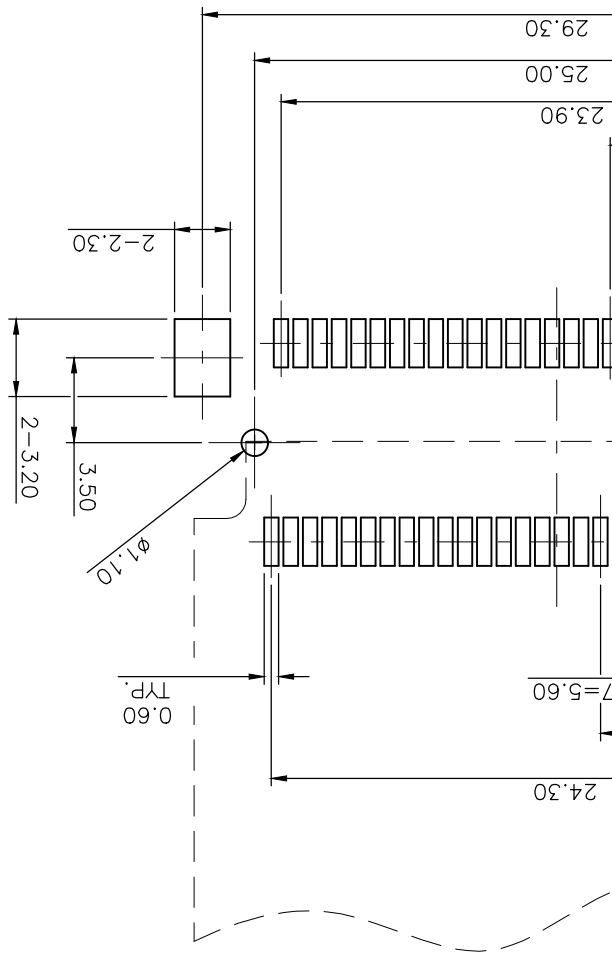
DRAWN	Fros	2014/12/12	DRAWN NAME:
CHECKED	Ron	2014/12/12	Mini PCI Express Socket H: X.Xmm
APPROVED	Albert	2014/12/12	PCIE-52P*H

SCALE	3.2	SHEET	1/3	SIZE	A4
-------	-----	-------	-----	------	----

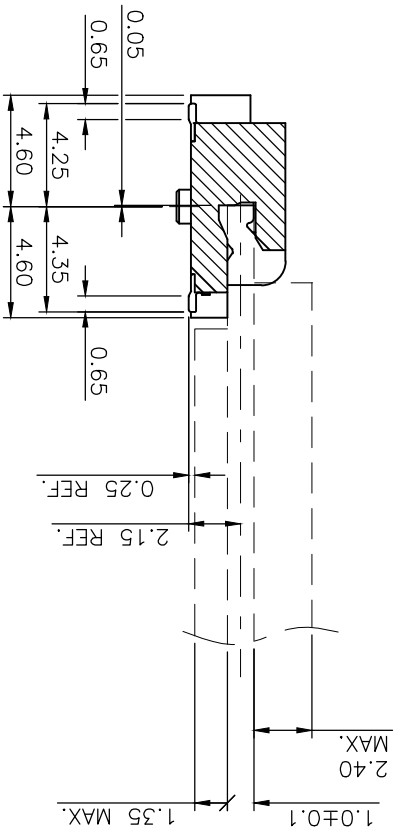
www.ciodin.com

SOFNG 碩方電子科技股份有限公司
開關, 連接器

B LAYOUT, TOP VIEW



GENERAL TOLERANCE: ± 0.05

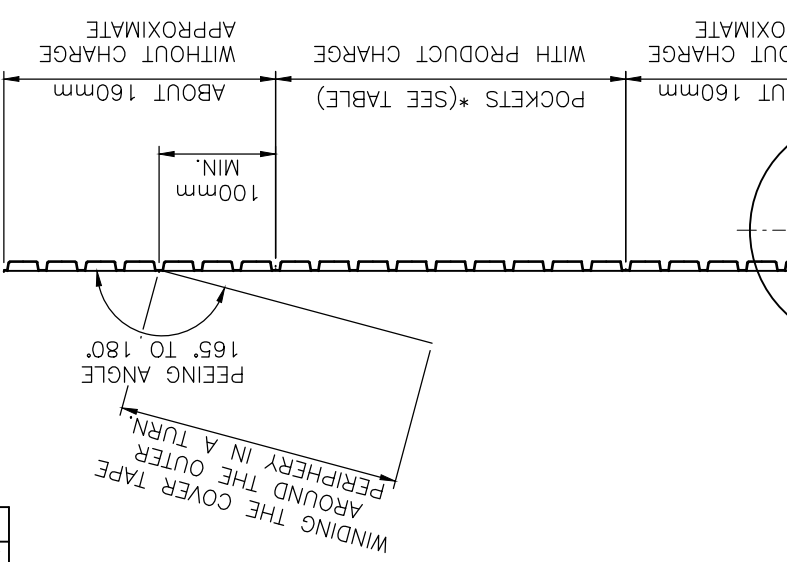
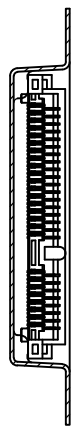
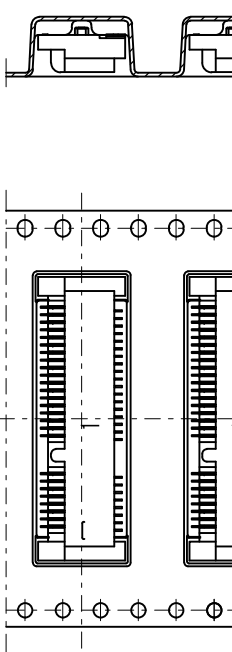


UNLESS OTHERWISE SPECIFIED TOLERANCE		mm	
UNIT:	DECIMAL	LINEAR	ANGLES
	X.	± 0.50	$\pm 5^\circ$
	X.X	± 0.25	$\pm 3^\circ$
	X.XX	± 0.12	$\pm 1^\circ$
DRAWN	Fros	2014/12/12	
CHECKED	Ron	2014/12/12	
APPROVED	Albert	2014/12/12	
SCALE	3.2	SHEET	2/3
		SIZE	A4

DRAWN NAME:		www.clodin.com	
PRODUCT NO.		PCI-E-52P*H	
DRAWN NAME:		Mini PCI Express Socket H: X.Xmm	

SOFNG 碩方電子科技股份有限公司
開關, 連接器

NO.	DESCRIPTION	DRAWN	DATE
	SEE SHEET 1		

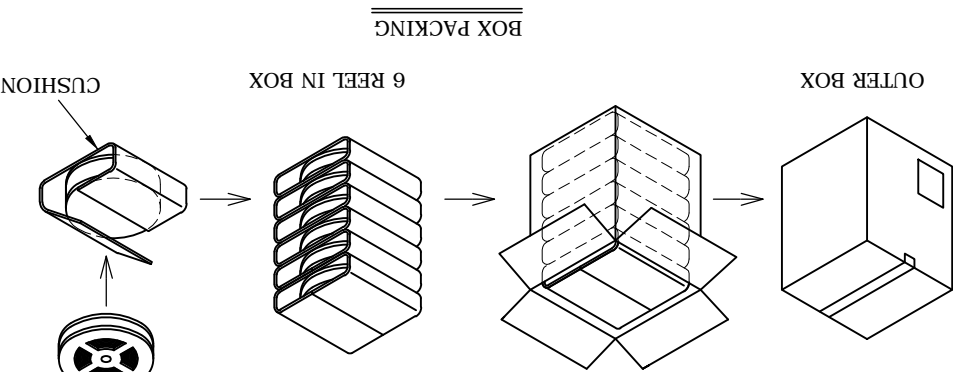


PACKING TABLE		P/N	Q'TY/ REEL	Q'TY/ CARTON
PCIE-52P56H	550 PCS			3,300 PCS
PCIE-52P40H	700 PCS			4,200 PCS
			Q'TY/ REEL	Q'TY/ CARTON

2. PACKING STYLE
6 REEL/CARTON

1. PEELING RESISTANCE: 0.1N~0.13N (10gf~130gf)
PEELING ANGLE: 165°~180°
PEELING SPEED: 300mm/min.

NOTE:



UNLESS OTHERWISE SPECIFIED TOLERANCE		DECIMAL	LINEAR	ANGLES
UNIT:	mm	X.	±0.50	±5°
		X.X	±0.25	±3°
		X.XX	±0.12	±1°
DRAWN	Fros	2014/12/12	DRAWN NAME: www.clodin.com	
CHECKED	Ron	2014/12/12	Mini PCI Express Socket H:X.Xmm	
APPROVED	Albert	2014/12/12	PRODUCT NO.	PCIE-52P*H
SCALE	1.25	SHEET	3/3	SIZE
			A4	

www.clodin.com

SOFTNG 碩方電子科技股份有限公司

開關, 連接器

NO.	DESCRIPTION	DRAWN	DATE
	SEE SHEET 1		

X-ON Electronics

Largest Supplier of Electrical and Electronic Components

Click to view similar products for [Standard Card Edge Connectors](#) category:

Click to view products by [SOFNG](#) manufacturer:

Other Similar products are found below :

[6565204-6](#) [PKC-156](#) [1437274-4](#) [147889-1](#) [1489165-4](#) [EBT156-12B1X](#) [EBT15622B2X](#) [EBT156-22R2W](#) [1-582587-1](#) [1-582589-1](#) [2-6437275-9](#) [284-0102-12100](#) [306022901000000](#) [307-012-502-202](#) [307-024-526-201](#) [307-056-520-300](#) [307-080-526-208](#) [1926088-2](#) [245-062-520-350](#) [287-0032-12101](#) [306-010-500-112](#) [306-028-525-102](#) [306-240-318](#) [307-036-502-202](#) [307-036-521-301](#) [307-072-526-202](#) [345-060-559-303](#) [368-004-520-201](#) [392-008-559-201](#) [534671-1](#) [5-530501-5](#) [341-240-317](#) [345-029-520-300](#) [345-030-500-301](#) [345-044-500-300](#) [345-220-058](#) [346-240-318](#) [357-030-526-201](#) [387-012-523-300](#) [395-044-520-300](#) [395-100-524-300](#) [50-12B-10](#) [50-6SN-5](#) [09-07-2032](#) [10035388-106LF](#) [10035388-802LF](#) [10115859-011LF](#) [10122859-009LF](#) [101269333204245CLF](#) [10127905-B04B24BLF](#)