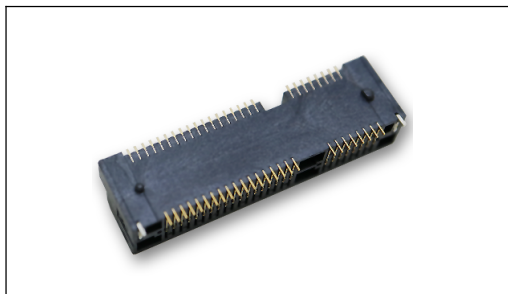


承 認 書



特点:

- MINI-PCI EXPRESS CONNECTORS, 适用于芯片、PCI 總線內部鏈接应用机器。
- 90° SMD 装の外接。

用途:

- 应用于移动、视听、汽车电子、多媒体、电器等各类相关产品。

東莞市碩方電子科技有限公司

[DONGGUAN SOFNG ELECTRONIC TECHNOLOGY Co., LTD]

樣品承認專項 [Sample Approval Drawing]

客戶名稱[Customer]	客戶料號[Customer P/N]
部品型號[Parts Model] PCIE-52P -56H 式	技術參數[Parameters] 環境に優しい材料

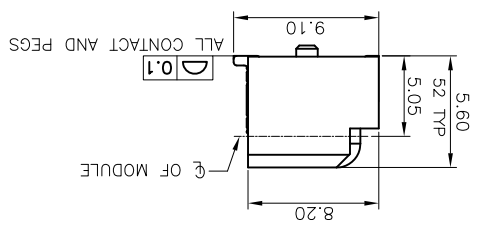
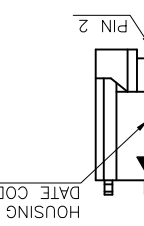
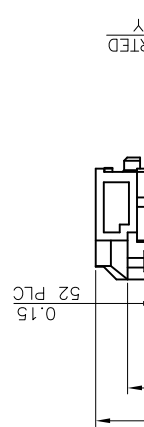
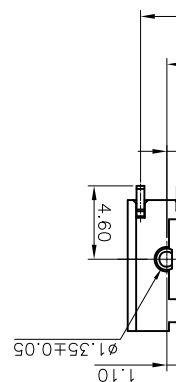
承認單位 [3 Research Institute]:

工程部 [R&D]	品保部 [Q C]	采购部 [Purchase]

客戶判定 [Customer Determine]:

工程部 [R&D]	品保部 [Q C]	采购部 [Purchase]
[章 承]	[章 承]	[章 承]

说明 [Remnrk] 媒体排出方式: 双响键式。



SPECIFICATION:

1. ELECTRICAL
 - 1.1 Current Rating: 0.5A per pin
 - 1.2 Voltage Rating: 50V DC
 - 1.3 Contact Resistance: 5m Ω Max
 - 1.4 Insulation Resistance: 50M Ω Min
 - 1.5 Dielectric Withstanding Voltage: 300VAC
2. MECHANICAL
 - 2.1 Durability: 100 Cycle
 - 2.2 Insertion Force: 2.3kgf max.
 - 2.3 Extraction Force: 2.3kgf max.
3. ENVIRONMENTAL
 - 3.1 Operating temperature range: -40°C ~ +85°C
 - 3.2 Storage temperature range: -40°C ~ +85°C
 - 4.1 Recommended IR Reflow Temperature: 260°C 10Sec
4. SOLDER ABILITY

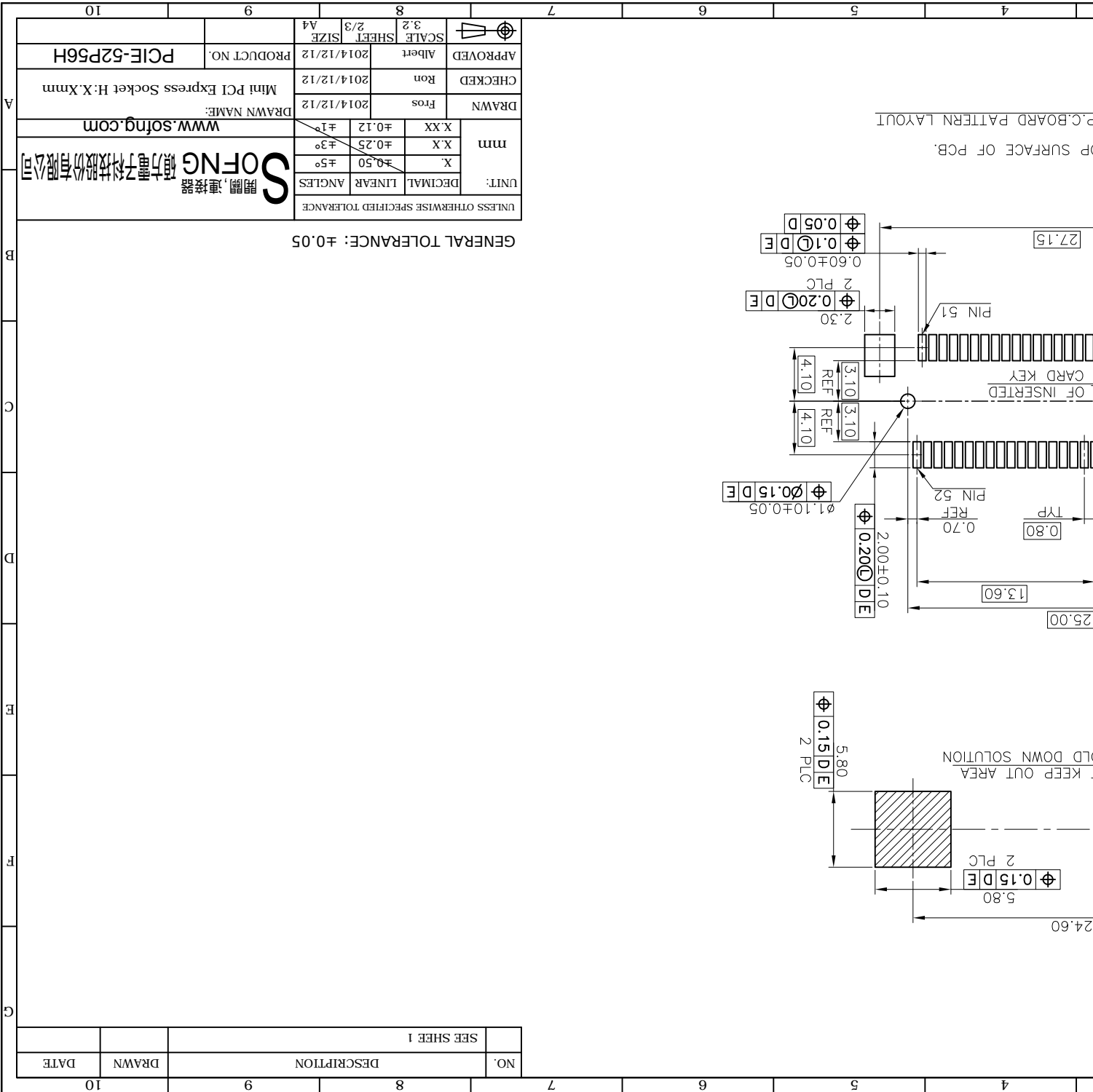
NO.	PART NAME	DESCRIPTION
3	HOLDDOWN	Brass C2680, Tin Plated
2	CONTACT	Phosphor Bronze C5210, Contact Area: Gold Flash Over Nickel
1	HOUSING	LCP UL94V-0, Black

UNITS:		DECIMAL	LINEAR	ANGLES
X	±0.50	±3°	±1°	
X X	±0.25			
X XX	±0.12			

APPROVED	Albert	2014/12/12	SCALE	3.2	SHEET	1/3	SIZE	A4
CHECKED	Ron	2014/12/12						
DRAWN	Fros	2014/12/12						

Mini PCI Express Socket H: X.Xmm
 DRAWN NAME: www.sofng.com
 SOFNG 碩方電子科技股份有限公司
 開關, 連接器

PCIE-52P56H

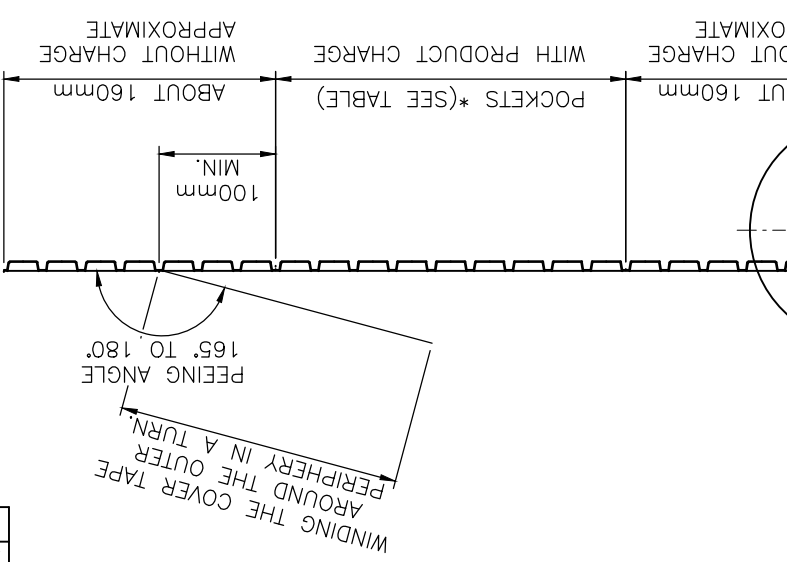
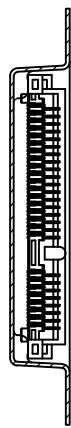
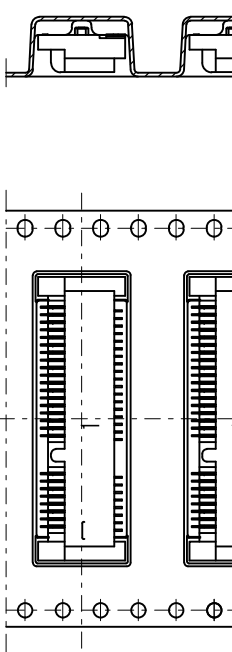


UNLESS OTHERWISE SPECIFIED TOLERANCE		UNIT:	DECIMAL	LINEAR	ANGLES
X	±0.50	°			
X X	±0.25				
X XX	±0.12				
DRAWN NAME:		Fros	2014/12/12		
CHECKED		Ron	2014/12/12		
APPROVED		Albert	2014/12/12		
SCALE	3.2	SHEET	2/3	SIZE	A4
PRODUCT NO.		PCIE-52P56H			

GENERAL TOLERANCE: ±0.05

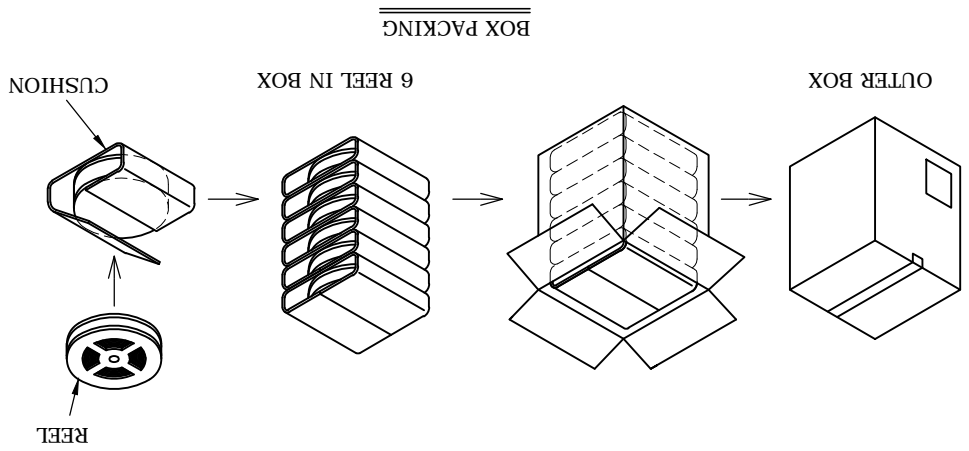
DRAWN NAME:		www.sofng.com			
CHECKED		Mini PCI Express Socket H: X: Xmm			
APPROVED		PCIE-52P56H			
SCALE	3.2	SHEET	2/3	SIZE	A4
DRAWN NAME:		Fros	2014/12/12		
CHECKED		Ron	2014/12/12		
APPROVED		Albert	2014/12/12		
SCALE	3.2	SHEET	2/3	SIZE	A4
PRODUCT NO.		PCIE-52P56H			

NO.	DESCRIPTION	DRAWN	DATE
	SEE SHEET 1		



PACKING TABLE		P/N	Q'TY/ REEL	Q'TY/ CARTON
PCIE-52P56H	550 PCS			3,300 PCS
PCIE-52P40H	700 PCS			4,200 PCS
			Q'TY/ REEL	Q'TY/ CARTON

- NOTE:**
1. PEELING RESISTANCE: 0.1N~0.13N (10gf~130gf)
PEELING ANGLE: 165°~180°
PEELING SPEED: 300mm/min.
 2. PACKING STYLE
6 REEL/CARTON



UNLESS OTHERWISE SPECIFIED TOLERANCE		mm	
UNIT:	DECIMAL	LINEAR	ANGLES
	X.	±0.50	±5°
	X.X	±0.25	±3°
	X.XX	±0.12	±1°
DRAWN	Fros	2014/12/12	
CHECKED	Ron	2014/12/12	
APPROVED	Albert	2014/12/12	
SCALE	1.25	SHEET	3/3
		SIZE	A4
PRODUCT NO.		PCIE-52P56H	

DRAWN NAME: Mini PCI Express Socket H: X.Xmm
www.sofng.com

SOFTNG 碩方電子科技股份有限公司
開關、連接器

NO.	DESCRIPTION	DRAWN	DATE
	SEE SHEET 1		

X-ON Electronics

Largest Supplier of Electrical and Electronic Components

Click to view similar products for [Standard Card Edge Connectors](#) category:

Click to view products by [SOFNG](#) manufacturer:

Other Similar products are found below :

[6565204-6](#) [PKC-156](#) [1437274-4](#) [147889-1](#) [1489165-4](#) [EBT156-12B1X](#) [EBT15622B2X](#) [EBT156-22R2W](#) [1-582587-1](#) [1-582589-1](#) [2-6437275-9](#) [284-0102-12100](#) [306022901000000](#) [307-012-502-202](#) [307-024-526-201](#) [307-056-520-300](#) [307-080-526-208](#) [1926088-2](#) [245-062-520-350](#) [287-0032-12101](#) [306-010-500-112](#) [306-028-525-102](#) [306-240-318](#) [307-036-502-202](#) [307-036-521-301](#) [307-072-526-202](#) [345-060-559-303](#) [368-004-520-201](#) [392-008-559-201](#) [534671-1](#) [5-530501-5](#) [341-240-317](#) [345-029-520-300](#) [345-030-500-301](#) [345-044-500-300](#) [345-220-058](#) [346-240-318](#) [387-012-523-300](#) [395-044-520-300](#) [395-100-524-300](#) [50-12B-10](#) [50-6SN-5](#) [09-07-2032](#) [10035388-106LF](#) [10035388-802LF](#) [10115859-011LF](#) [10122859-009LF](#) [101269333204245CLF](#) [10127905-B04B24BLF](#) [530555-1](#)