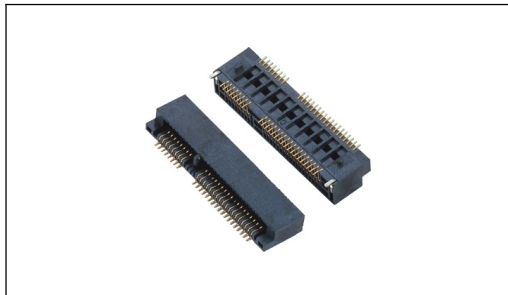


# 承 认 书



## 特点:

- MINI-PCI EXPRESS CONNECTORS, 适用于芯片、PCI 總線內部鏈接应用机器。
- 90° SMD 装の外接。

## 用途:

- 应用于移动、视听、汽车电子、多媒体、电器等各类相关产品。

## 東莞市碩方電子科技有限公司

[DONGGUAN SOFNG ELECTRONIC TECHNOLOGY Co., LTD]

## 樣品承認專項 [Sample Approval Drawing]

|                                 |                           |
|---------------------------------|---------------------------|
| 客戶名稱[Customer]                  | 客戶料號[Customer P/N]        |
| 部品型號[Parts Model] PCIE-52P70H 式 | 技術參數[Parameters] 環境に優しい材料 |

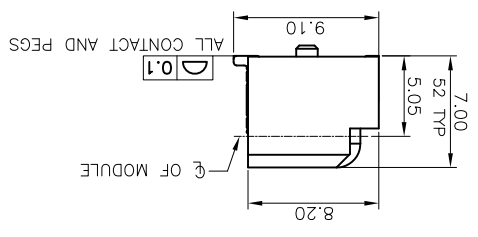
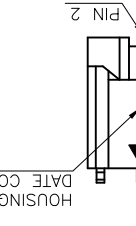
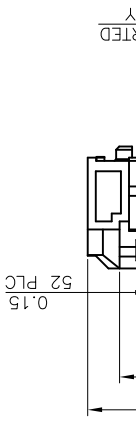
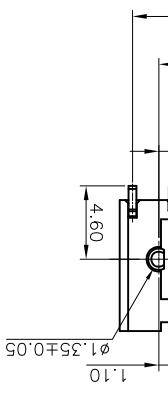
承認單位 [ 3 Research Institute ]:

| 工程部 [R&D] | 品保部 [Q C] | 采购部 [Purchase] |
|-----------|-----------|----------------|
|           |           |                |

客戶判定 [Customer Determine]:

| 工程部 [R&D] | 品保部 [Q C] | 采购部 [Purchase] |
|-----------|-----------|----------------|
| [章 承]     | [章 承]     | [章 承]          |

说明 [Remnrk] 媒体排出方式: 双响键式。



**SPECIFICATION:**

1. ELECTRICAL
  - 1.1 Current Rating: 0.5A per pin
  - 1.2 Voltage Rating: 50V DC
  - 1.3 Contact Resistance: 5mΩ Max
  - 1.4 Insulation Resistance: 50MΩ Min
  - 1.5 Dielectric Withstanding Voltage: 300VAC
2. MECHANICAL
  - 2.1 Durability: 100 Cycle
  - 2.2 Insertion Force: 2.3kgf max.
  - 2.3 Extraction Force: 2.3kgf max.
3. ENVIRONMENTAL
  - 3.1 Operating temperature range: -40°C ~ +85°C
  - 3.2 Storage temperature range: -40°C ~ +85°C
  - 4.1 Recommended IR Reflow Temperature: 260°C 10Sec
4. SOLDER ABILITY

| NO. | PART NAME | DESCRIPTION   |
|-----|-----------|---|
| 3   | HOLDDOWN  | Brass C2680, Tin Plated                                     |
| 2   | CONTACT   | Phosphor Bronze C5210, Contact Area: Gold Flash Over Nickel |
| 1   | HOUSING   | LCP UL94V-0, Black  |

|        |       |         |        |        |
|--------|-------|---------|--------|--------|
| UNITS: |       | DECIMAL | LINEAR | ANGLES |
| X      | ±0.50 | ±3°     | ±1°    |        |
| X X    | ±0.25 |         |        |        |
| X XX   | ±0.12 |         |        |        |

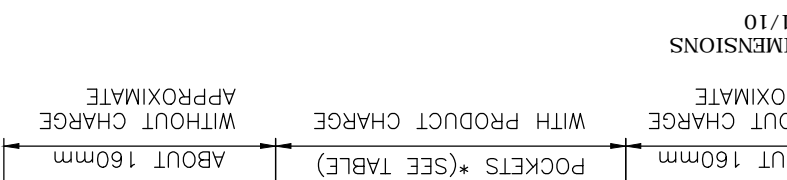
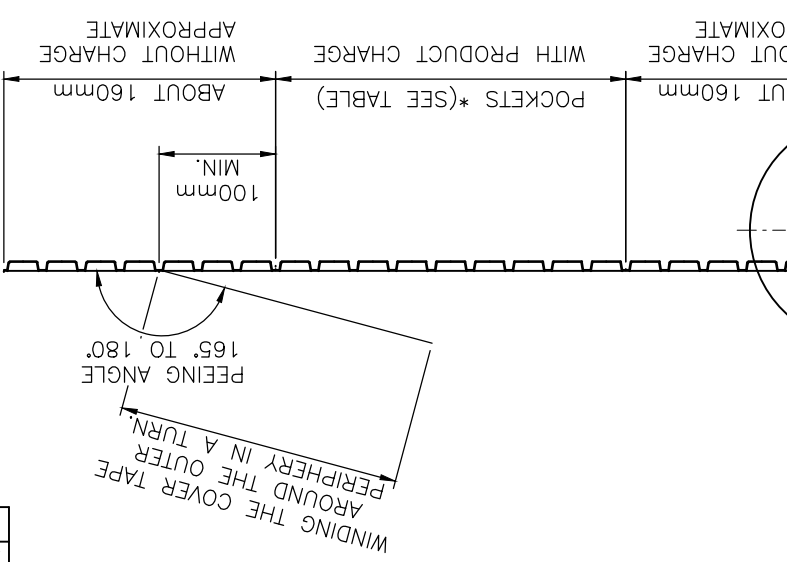
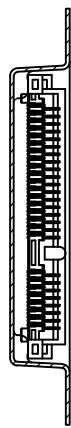
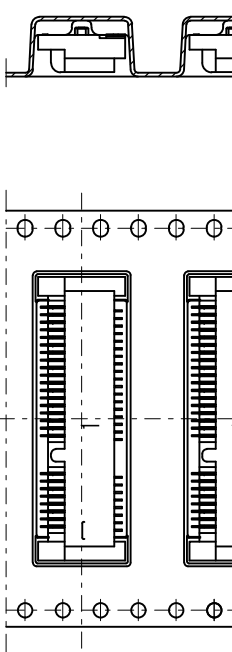
|          |        |            |       |     |       |     |      |    |
|----------|--------|------------|-------|-----|-------|-----|------|----|
| APPROVED | Albert | 2014/12/12 | SCALE | 3.2 | SHEET | 1/3 | SIZE | A4 |
| CHECKED  | Ron    | 2014/12/12 |       |     |       |     |      |    |
| DRAWN    | Fros   | 2014/12/12 |       |     |       |     |      |    |

Mini PCI Express Socket H: X.Xmm  
 DRAWN NAME: [www.sofng.com](http://www.sofng.com)  
 PCIE-52P\*H

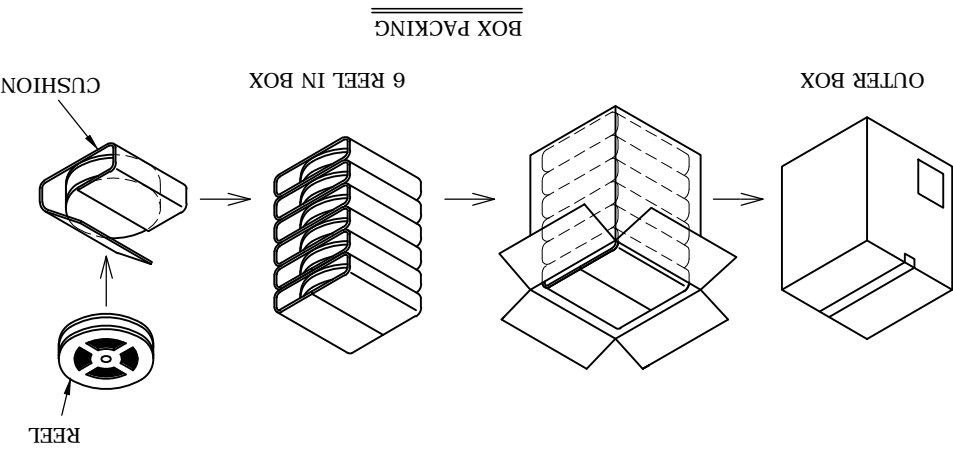
UNLESS OTHERWISE SPECIFIED TOLERANCE

SOFTNG 碩方電子科技股份有限公司  
 開關, 連接器





| PACKING TABLE |         | P/N | Q'TY/ REEL | Q'TY/ CARTON |
|---------------|---------|-----|------------|--------------|
| PCIE-52P56H   | 550 PCS |     |            | 3,300 PCS    |
| PCIE-52P40H   | 700 PCS |     |            | 4,200 PCS    |



|                                      |                       |
|--------------------------------------|-----------------------|
| UNLESS OTHERWISE SPECIFIED TOLERANCE |                       |
| UNIT:                                | DECIMAL LINEAR ANGLES |
| X.                                   | ±0.50 ±5°             |
| X.X                                  | ±0.25 ±3°             |
| X.XX                                 | ±0.12 ±1°             |
| DRAWN: Fros 2014/12/12               |                       |
| CHECKED: Ron 2014/12/12              |                       |
| APPROVED: Albert 2014/12/12          |                       |
| SCALE: 1.25                          | SHEET: 3/3            |
| SIZE: A4                             |                       |

|                                  |  |
|----------------------------------|--|
| DRAWN NAME: www.sofng.com        |  |
| Mini PCI Express Socket H: X.Xmm |  |
| PRODUCT NO. PCIE-52P*H           |  |

**SOFNG** 開關, 連接器  
碩方電子科技股份有限公司

- NOTE:
1. PEELING RESISTANCE: 0.1N~0.13N (10gf~130gf)  
PEELING ANGLE: 165°~180°  
PEELING SPEED: 300mm/min.
  2. PACKING STYLE  
6 REEL/CARTON

|     |             |       |      |
|-----|-------------|-------|------|
| NO. | DESCRIPTION | DRAWN | DATE |
|     | SEE SHEET 1 |       |      |

## X-ON Electronics

Largest Supplier of Electrical and Electronic Components

*Click to view similar products for [Standard Card Edge Connectors](#) category:*

*Click to view products by [SOFNG](#) manufacturer:*

Other Similar products are found below :

[6565204-6](#) [PKC-156](#) [1437274-4](#) [147889-1](#) [1489165-4](#) [EBT156-12B1X](#) [EBT15622B2X](#) [EBT156-22R2W](#) [1-582587-1](#) [1-582589-1](#) [2-6437275-9](#) [284-0102-12100](#) [306022901000000](#) [307-012-502-202](#) [307-024-526-201](#) [307-056-520-300](#) [307-080-526-208](#) [1926088-2](#) [245-062-520-350](#) [287-0032-12101](#) [306-010-500-112](#) [306-028-525-102](#) [306-240-318](#) [307-036-502-202](#) [307-036-521-301](#) [307-072-526-202](#) [345-060-559-303](#) [368-004-520-201](#) [392-008-559-201](#) [534671-1](#) [5-530501-5](#) [341-240-317](#) [345-029-520-300](#) [345-030-500-301](#) [345-044-500-300](#) [345-220-058](#) [346-240-318](#) [387-012-523-300](#) [395-044-520-300](#) [395-100-524-300](#) [50-12B-10](#) [50-6SN-5](#) [09-07-2032](#) [10035388-106LF](#) [10035388-802LF](#) [10115859-011LF](#) [10122859-009LF](#) [101269333204245CLF](#) [10127905-B04B24BLF](#) [530555-1](#)