

Operation: SMT/卧式 2.5 ϕ 中型 三段音频连接器



LTEM NO.: PJ-208A (Series)

(L13.5 \times W5.0 \times H4.5 2.5 PHONE-JACK)

贴片卧式

侧向操作

精密部品

带导向柱

適合環保 **RoHS**

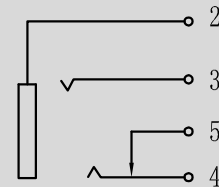


Technical parameter

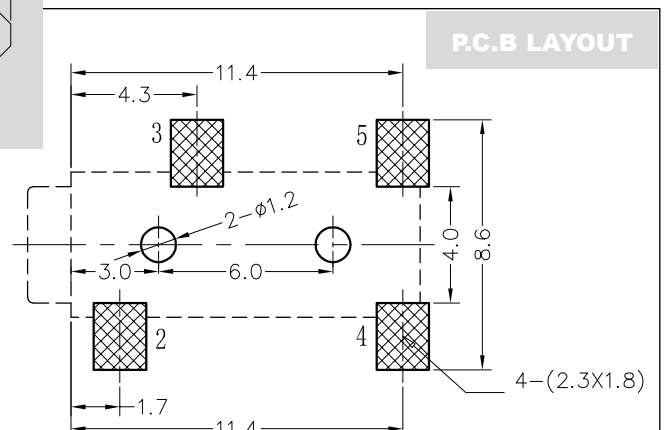
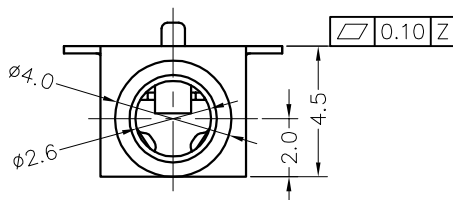
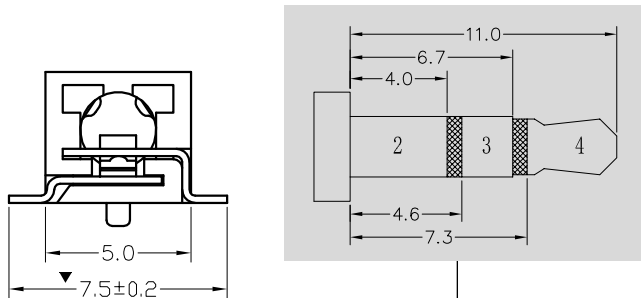
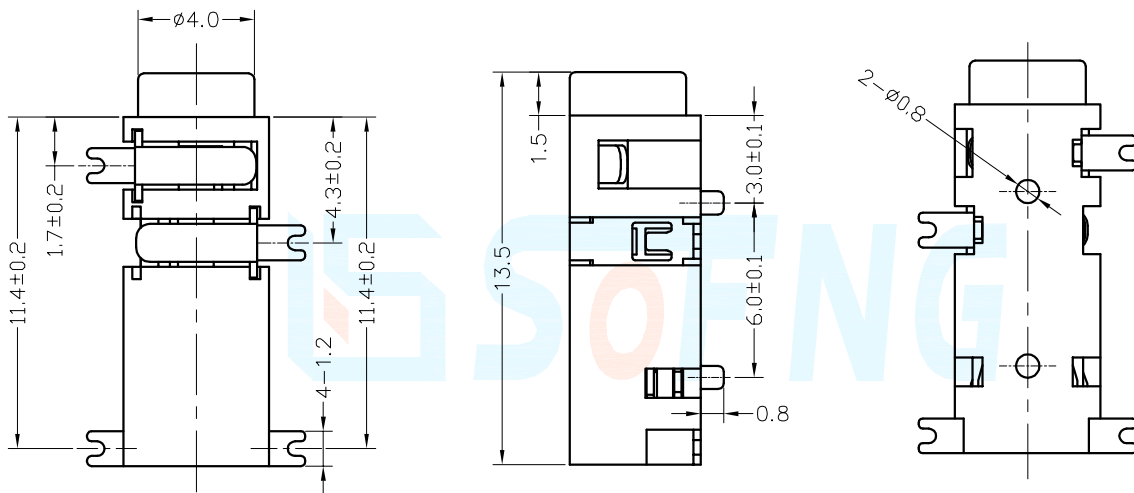
PROJECT	LEVEL	A[better product]		B[average product]	
		Contact Rating			
Electrical	Initial Contact Resistance	50m Ω max.			
	Insulation Resistance	100M Ω min.500V DC	Skey/PD: 100M Ω min.300V DC		
Properties	Withstand Voltage	500V AC for 1 minute	350 V AC for 1 minut		
	There No Load	6,000 Cycles	5,000 Cycles		
Durable Performance	Rated Load	5,000 Cycles	4,000 Cycles		
	Storage temp.	-35 $^{\circ}$ C~+75 $^{\circ}$ C(Operating Temp:)			
Operating Force		IF:5~15N MAX. (EF:10.0N MIN.)			
Heat Rrsistance		225 $^{\circ}$ C, 5sec. Manual:350 $^{\circ}$ C, 3sec.			

Material declaration		
No	NAME	Description
①	基座	PBT (Black)耐热塑胶
②	接觸端子#2	C5191R-H (t=0.20mm)磷铜[鍍基銀]
③	接觸端子#3	C5191R-H (t=0.20mm)磷铜[鍍基銀]
④	接觸端子#4	C5191R-H (t=0.20mm)磷铜[鍍基銀]
⑤	接觸端子#5	C5191R-H (t=0.20mm)磷铜[鍍基銀]

CIRCUIT DIAGRAM



Unit:mm



X-ON Electronics

Largest Supplier of Electrical and Electronic Components

Click to view similar products for [Phone Connectors](#) category:

Click to view products by [SOFNG](#) manufacturer:

Other Similar products are found below :

[R4F](#) [14412GX](#) [E12BPKG](#) [MT333X](#) [171-3302-EX](#) [NC3MG-V](#) [NP2RX-AU-SILENT-D](#) [JM2PB-AU BULK](#) [S2674](#) [280L](#) [RJ5VI-S](#) [TM1R-AU](#) [TM2PJ-AU](#) [TM2PJ-AU BULK](#) [TS3PBJ-AU](#) [TS3PBMJ-AU](#) [MP-101](#) [54B](#) [T10711](#) [MT334F](#) [NJ3FP6F-P](#) [NPX-PROMO](#) [JS3PB-AU BULK](#) [XMT332A](#) [114BPCSX](#) [CMT334B](#) [AA0-A4830-A00](#) [PJ-218](#) [PJ-320-3P SMT](#) [PJ-321A](#) [PJ-393-8P](#) [KH-PJ-327D-SMT](#) [PJ-320D](#) [PJ-3106M](#) [PJ-376](#) [PJ-368](#) [PJ-624](#) [PJ-339](#) [PJ-3200B](#) [RCJ-017](#) [PJ-307B-1.3-01](#) [PJ-324](#) [PJ-324M](#) [PJ-313D](#) [PJ-313](#) [PJ-227](#) [PJ-3106AC1](#) [PJ-3505A](#) [PJ-321](#) [KH-PJ-307-5P](#)