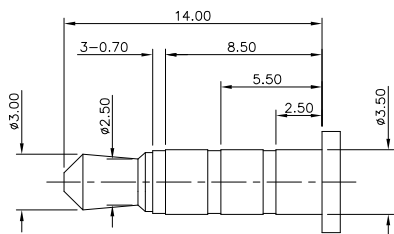
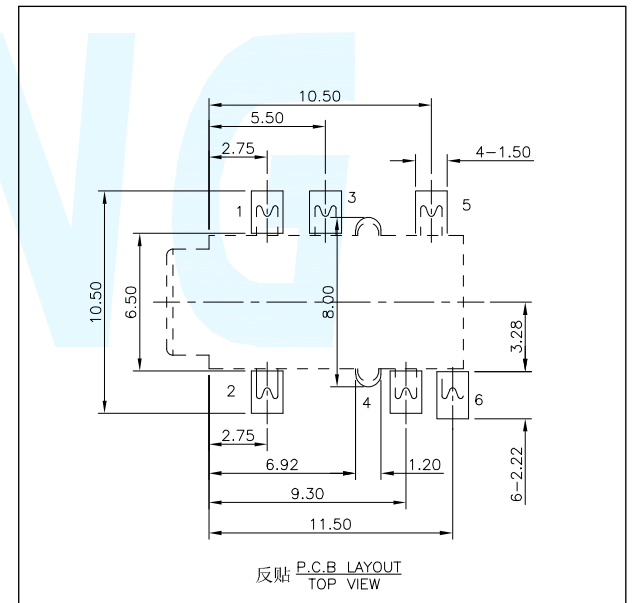
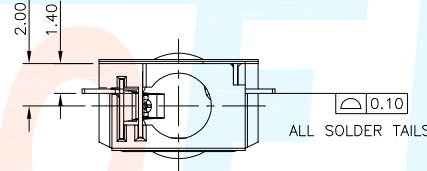
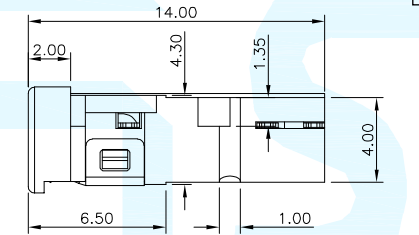
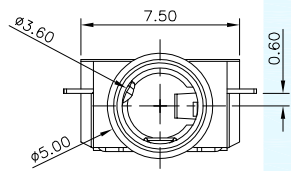


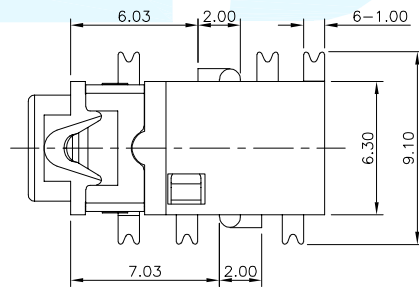
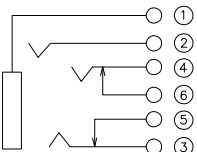
REVISION			
LTR	DESCRIPTION	DATE	APP
A0	NEW RELEASE	05/20/2020	PECK

Material declaration			
No.	NAME	Type	Description
①	接觸端子#1	1	C5191R-H (t=0.20mm)磷銅(銀基)
②	接觸端子#2	1	C5191R-H (t=0.20mm)磷銅(銀基)
③	接觸端子#3	1	C5191R-H (t=0.20mm)磷銅(銀基)
④	接觸端子#4	1	C5191R-H (t=0.20mm)磷銅(銀基)
⑤	接觸端子#5	1	C5191R-H (t=0.20mm)磷銅(銀基)
⑥	接觸端子#6	1	C5191R-H (t=0.20mm)磷銅(銀基)
⑦	基座	1	PA9T (Black)耐熱塑膠



(ø3.50mm 4 POLE PLUG DETAIL DRAWING)

SCHEMATIC



LEVEL		A[better product]	B[average product]
PROJECT			
Electrical Properties	Contact Rating	0.25A, 24V DC	
	Initial Contact Resistance	30mΩ max.	50mΩ max.
	Insulation Resistance	100MΩ min.500V DC	Skey/PD: 100MΩ min.300V DC
Durable Performance	Withstand Voltage	500V AC for 1 minute	350 V AC for 1 min
	There No Load	6,000 Cycles	5,000 Cycles
	Rated Load	5,000 Cycles	4,000 Cycles
Storage temp.		-25°C~+75°C(Operating Temp:)	

DIMENSION CLASSIFICATION
 ■ : CRITICAL
 ☒ : MAJOR

TOLERANCE TABLE

	±	
.X	0.40	
.XX	0.25	
.XXX	0.10	
ANGLE	2°	

台灣碩方精密電子科技有限公司
 TAIWAN SOFNG PRECISION ELECTRONIC CO., LTD



TITLE PJ-342E 四段式耳机插座
 SMT沉板带开关常闭功能

開關, 連接器
SOFNG

PART NO.	PJ-342E		SERIES	SD106
APPROVED	Peck	DWG NO.	SOF-G006	
CHECKED	Paul	SCALE	1:1	UNIT mm SIZE A4
DRAWIN	David	REV	AO	SHEET NO. 1/1

X-ON Electronics

Largest Supplier of Electrical and Electronic Components

Click to view similar products for [Phone Connectors](#) category:

Click to view products by [SOFNG](#) manufacturer:

Other Similar products are found below :

[R4F](#) [14412GX](#) [E12BPKG](#) [MT333X](#) [171-3302-EX](#) [NC3MG-V](#) [NP2RX-AU-SILENT-D](#) [JM2PB-AU BULK](#) [S2674](#) [280L](#) [RJ5VI-S](#) [TM1R-AU](#) [TM2PJ-AU](#) [TM2PJ-AU BULK](#) [TS3PBJ-AU](#) [TS3PBMJ-AU](#) [MP-101](#) [54B](#) [T10711](#) [MT334F](#) [NJ3FP6F-P](#) [NPX-PROMO](#) [JS3PB-AU BULK](#) [XMT332A](#) [114BPCSX](#) [CMT334B](#) [AA0-A4830-A00](#) [PJ-218](#) [PJ-320-3P SMT](#) [PJ-321A](#) [PJ-393-8P](#) [KH-PJ-327D-SMT](#) [PJ-320D](#) [PJ-3106M](#) [PJ-376](#) [PJ-624](#) [PJ-339](#) [PJ-3200B](#) [RCJ-017](#) [PJ-307B-1.3-01](#) [PJ-324](#) [PJ-324M](#) [PJ-313D](#) [PJ-313](#) [PJ-227](#) [PJ-343 Red](#) [PJ-3106AC1](#) [PJ-3505A](#) [PJ-321](#) [KH-PJ-307-5P](#)