



CAT II

300 V

IEC

61557

IP40

WiFi

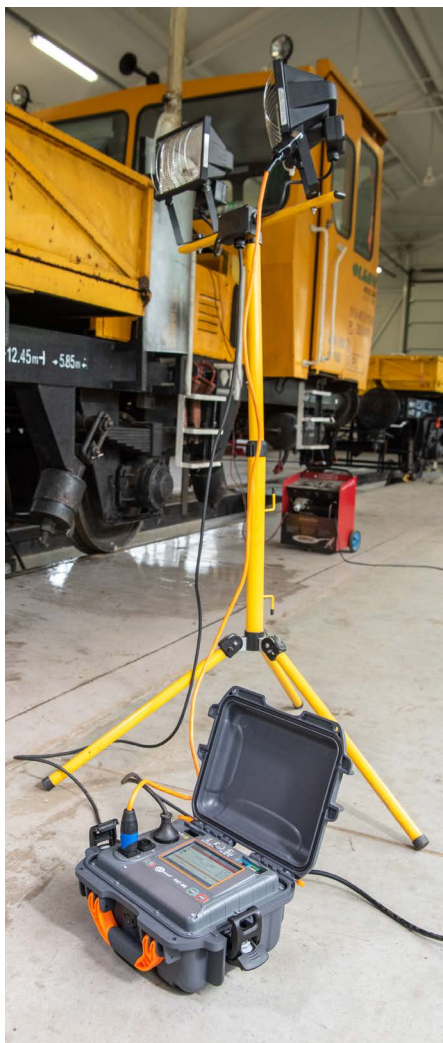
TOUCH SCREEN

QR CODE SYSTEM

## Safety guardian on the post

### Features

- Extensive measuring system enables:
  - protective conductor resistance measurement using current: 200 mA, 10 A (**PAT-85**), 25 A (**PAT-85**),
  - measurement of insulation resistance using voltage: 100 V (**PAT-85**), 250 V, 500 V, 1000 V (**PAT-85**),
  - measurement of substitute, differential and touch leakage current,
  - functional test,
  - test of RCD and PRCD switches,
  - ...and much more.
- Intuitive user interface.
- Cooperation with a label printer and QR code scanner.
- Robust, compact housing.
- Operation time at rechargeable battery power supply: up to 1 hour.



## Application

The device is used wherever safety is the most important thing. Ideally suited to situations where it is necessary to check welders, power tools, three-phase devices and household appliances.

## Capabilities

Thanks to the extensive measuring part, the device enables comprehensive checking of electrical devices. The touch screen and autoprocudures section make testing quick and efficient.

The meter cooperates with a label printer and QR scanner, which greatly facilitates the recordkeeping of tools. The following printouts are available:

- initial measurement report,
- QR code, where information on performed tests and the parameters of the tested device are saved.

These data can be read and added to the meter memory using the optional QR code scanner.

The whole picture is complemented by a compact and durable housing. It provides instrument protection during both measurements and transport.

13/09/2019 10:53:20		U <sub>lin</sub> = 239.2 V U <sub>lpe</sub> = 0.7 V f = 50.0 Hz	
2341455			
Numer ewidencyjny	37422	13/09/2019 11:38:00	501
Nazwa	toster	admin	Sonel PAT-85
Producent		13/09/2019 11:01:48	101
Model	5r4yg	admin	Sonel PAT-85
Serjal No	574	13/09/2019 10:59:34	101
Rok produkcji	2019	admin	Sonel PAT-85
Klasa			
Cykl	6		
Termin kolejnego badania 13/03/2020			

## Memory

The memory has a tree structure. For each device tested it contains its description, location of measurements, customer data and registration number.



## Communication

The meter provides many modes of transmission of measurement results: via USB, LAN and WiFi. In addition, it is possible to upload the results to a USB stick.

Dedicated **PAT Analysis** software allows for data management and also reports preparation - in several versions, depending on the user's needs. In addition, it is possible to use the **PAT Server** solution. This system allows you to work in many modes, including:

- smooth data management,
- online upload to server,
- work through a web browser,
- work in task ordering mode,
- storing copies of data on the server.

## Standard accessories



**Power cord**

WAPRZAS1



**L-11 carrying case**

WAFUTL11



**2x 5x20 mm,  
16 A fuse**

WAPOZB16PAT



**Test lead 1.8 m  
(crocodile clip)**

WAPRZ1X8ORKS



**USB cable**

WAPRZUSB

## Optional accessories



**Three-phase socket  
adapter 16 A**

5P  
WAADAPAT16P

5P switchable  
WAADAPAT16PR

4P  
WAADAPAT16C

4P switchable  
WAADAPAT16CPR



**Three-phase socket  
adapter 32 A**

5P  
WAADAPAT32P

5P switchable  
WAADAPAT32PR

4P  
WAADAPAT32C

4P switchable  
WAADAPAT32CPR



**3P industrial  
socket adapter**

16 A  
WAADAPAT16F1

32 A  
WAADAPAT32F1



**PAT-3F-PE adapter  
for leakage current  
measurement**

WAADAPAT3FPE



**Pin probe 1 kV  
CAT III/1000 V  
CAT IV/600 V  
(banana socket) red**

WASONRE0GB1



**Pin probe 1 kV  
CAT III/1000 V  
CAT IV/600 V  
(banana socket) blue**

WASONBU0GB1



**Kelvin clip 1 kV 25 A**

WAKROKELK06



**High-current  
pin probe (ba-  
nana sockets)**

WASONSPGB1



**Brush probe  
(banana socket)**

WASONSZ1



**C-3 current clamp  
(Ø 52 mm)**

WACEGC30KR



**Double-wire  
test lead**

1.5 m (PAT plug/banana plugs)  
WAPRZ1X5DZBB

2.1 m (IEC C13/banana plugs)  
WAPRZ2X1DZIECB



**IEC/Uni Schuko  
adapter for exten-  
sion cords testing**

WAADAPATIEC2



**IEC 60320 C6 to  
C13 adapter**

WAADAPATIEC1



**Report / barcode  
printer (USB,  
portable)**

WAADAD2



**Report / barcode  
printer (Wi-Fi /  
D3, portable)**

WAADAD3



**Barcode scan-  
ner (USB)**

WAADACK2D



**Accessories for  
SATO printer**

Tape / paper (glued)  
WANAKD2

Ink tape  
WANAKD2BAR



**Accessories for  
Brother printer**

Ink tape  
WANAKD3



**Sonel PAT Analysis**

WAPROSONPAT3

# Technical specification

Measurement functions	Range	Resolution	Accuracy ±(% m.v. + digits)
<b>Resistance of protective conductor (PE)</b> PAT-80: I = 200 mA PAT-85: I = 200 mA / 10 A / 25 A	up to 19.99 Ω	from 1 mΩ	from ±(3% m.v. + 4 digits)
<b>Insulation resistance</b> PAT-80: U <sub>ISO</sub> = 250 V / 500 V PAT-85: U <sub>ISO</sub> = 100 V / 250 V / 500 V / 1000 V	up to 599.9 MΩ	from 1 kΩ	±(5% m.v. + 8 digits)
<b>Current (clamp measurement)</b>	up to 24.9 A	from 1 mA	±(5% m.v. + 5 digits)
<b>Visual test</b>		✓	
<b>Continuity check of protective conductor (PE)</b>		✓	
<b>Insulation resistance measurement at three points</b>		✓	
<b>IEC cable test</b>		✓	
<b>Functional test</b>			
Apparent power S	up to 3.99 kVA	from 1 VA	±(5% m.v. + 3 digits)
Active power P	up to 3.99 kW	from 1 W	±(5% m.v. + 3 digits)
Reactive power Q	up to 3.99 kvar	from 1 var	±(5% m.v. + 3 digits)
Power Factor (PF)	up to 1.00	0.01	±(10% m.v. + 5 digits)
Current consumption for power measurement	up to 15.99 A	0.01 A	±(2% m.v. + 3 digits)
THD for voltage and current	up to 99.9%	0.1%	±(5% m.v. + 5 digits)
Cosφ	up to 1.0	0.1	±(5% m.v. + 5 digits)
<b>Leakage current measurement</b>			
PE leakage current and differential leakage current	up to 19.9 mA	0.01 mA	±(5% m.v. + 2 digits)
Substitute leakage current	up to 19.9 mA	0.01 mA	±(5% m.v. + 2 digits)
Touch leakage current	up to 4.999 mA	0.001 mA	±(5% m.v. + 3 digits)
<b>RCD and PRCD switch test</b>			
Measurement of RCD parameters according to IEC 61557	up to 300 ms	1 ms	±(2% m.v. + 2 digits)
Measurement of RCD tripping current I <sub>A</sub> for sinusoidal residual current (AC type)	up to 30 mA	0.1 mA	±5% I <sub>Δn</sub>
<b>Measurement of power network parameters</b>			
Voltage	up to 265.0 V	0.1 V	±(2% m.v. + 2 digits)
Frequency	up to 55.0 Hz	0.1 Hz	±(2% m.v. + 2 digits)

## Technical data

Technical data	TFT 5.6" 800 x 480 px
Power supply	195...265 V, 50 / 60 Hz mains NiMH 7.2 V / 2 Ah rechargeable battery
Load current	max. 16 A (230 V)

## Safety and work conditions

Measuring category according to EN 61010	II 300 V
Ingress protection	IP40
Type of insulation according to EN 61010-1 and IEC 61557	double
Dimensions	318 x 257 x 152 mm
Weight	ca. 5 kg
Operating temperature	-10...+50°C
Storage temperature	-20...+70°C
Humidity	20...80%
Nominal temperature	+20...+25°C
Reference humidity	40%...60%
Altitude a.s.l.	<2000 m

## Memory and communication

Memory of measurement results	min. 4 GB
Data transmission	USB 2.0, Wi-Fi, LAN

## Other information

Quality standard - development, design and production	ISO 9001 ISO 14001 ISO 45001
The product meets the EMC (emission for industrial environment) requirements according to standards	EN 61326-1 EN 61326-2-2

## X-ON Electronics

Largest Supplier of Electrical and Electronic Components

*Click to view similar products for [Digital Multimeters](#) category:*

*Click to view products by [Sonel](#) manufacturer:*

Other Similar products are found below :

[6111-517](#) [FS881](#) [40705X](#) [C.A 6133 LAUNCH KIT P 1020 A](#) [SEFRAM7303](#) [BS K-CLIP 19290](#) [DM285-FLEX-KIT](#) [IBT6K](#) [GDM-531](#)  
[GDM-532](#) [GDM-533](#) [GDM-541](#) [1013-099](#) [1000-219](#) [1001-613](#) [1006-969](#) [1008-221](#) [1012-597](#) [30XR](#) [34XR](#) [35XP](#) [TESTO 745](#) [0590 7450](#)  
[TESTO 760-2](#) [0590 7602](#) [TESTO 760-3](#) [0590 7603](#) [440012](#) [AX-155](#) [AX-174](#) [AX-178](#) [AX-18B](#) [AX-190A](#) [AX-503](#) [AX-507B](#) [AX-594](#) [AX-](#)  
[LCR42A](#) [AX-MS811](#) [AX-MS8250](#) [AX-PDM01](#) [AX-T520](#) [AX-T901](#) [AX-T903](#) [BAT-250-EUR](#) [BM525S](#) [BM805S](#) [BM807S](#) [BM817S](#)  
[BM827S](#) [BM829S](#) [BM857S](#)