



Class A remote analysis

Features

- Remote control and data transfer through a built-in GSM modem.
- Anti-theft feature – SMS notification in the event of position change (built-in GPS receiver).
- Real-time clock synchronized to GPS protocol.
- Remote control of the analyzer via software: **SoneI Analysis** (Wi-Fi and GSM for Windows) or **SoneI Analysis Mobile** (Wi-Fi for Android).

Measured parameters

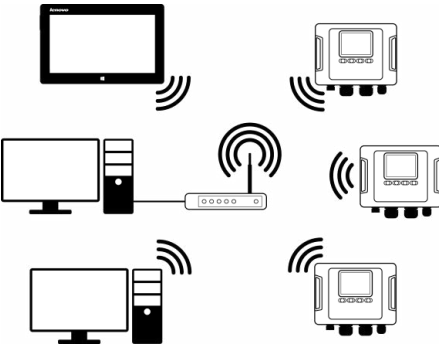
- **Transients up to ± 8000 V with max. sampling frequency 10 MHz.** Minimal transient time is **650 ns** (only PQM-711)
- **Voltages L1, L2, L3, N, PE (five measurement inputs)** – average, minimum, maximum and instant values within the range up to 1000 V, interoperability with voltage transducers.
- **Currents L1, L2, L3, N (four measurement inputs)** – average, minimum, maximum and instant values, current measurement within the range up to 6 kA (depending on applied current clamp), interoperability with current transducers.
- Measurement of control signals up to 3000 Hz.
- Crest factors for current (CFI) and voltage (CFU).
- Frequency within the range of 40 Hz – 70 Hz.
- Active power (P), reactive power (Q), distortion power (D), apparent power (S) with identification of the nature of reactive power (capacitive, inductive).
- Calculation of reactive power using the Budeanu method and IEEE 1459 method.
- Active energy (E_p), reactive energy (E_Q), apparent energy (E_S).
- Power factor, $\cos\phi$, $\tan\phi$.
- K factor (transformer overload caused by the harmonics).
- Up to 50th harmonics for voltage and current.
- Interharmonics measured as groups.
- Total Harmonic Distortion (THD) for voltage and current.
- Short-term (PST) and long-term (PLT) flicker (IEC 61000-4-15 class A).
- Unbalance of voltage (IEC 61000-4-30 class A) and current.
- Current events detection including waveforms recording.
- Current and voltage events recording with waveforms (up to 1 s) and $RMS_{1/2}$ graphs with 30 s maximum recording time.
- Current and voltage waveforms recording after each averaging period.



Wide range of mains to analyze

- With rated frequency 50/60 Hz
- With rated voltages: 64/110 V; 110/190 V; 115/200 V; 120/208 V; 127/220 V; 133/230 V; 220/380 V; 230/400 V; 240/415 V; 254/440 V; 265/460 V; 277/480 V; 290/500 V; 400/690 V; 480/830 V (for systems with N conductor)
- Direct current
- Systems:
 - » single-phase
 - » split-phase with common N
 - » three-phase – WYE with and without N conductor
 - » three-phase – Delta
 - » three-phase – WYE and Delta Aron
 - » with current and voltage transducers

Capabilities



PQM-710 and PQM-711 have a **built-in GPS receiver** ensuring real time clock accuracy and an integrated **GSM modem** that facilitates remote analyzer operation. Furthermore, PQM-711 is also equipped with a **transient recorder** (sampling frequency 10 MHz, voltage range **up to ± 8000 V**).

An additional trump card of the analyzers is the built-in **Wi-Fi communication module**, providing a number of advantages: no restrictions on file transfer, no data transfer costs, use of local wireless infrastructure... This gives the user the opportunity to adapt to the conditions prevailing on the site. They can supervise measurements from a convenient location – for example, an area without electromagnetic interference – using a laptop, smartphone or tablet.



Displaying data

PQM-710 and PQM-711 can be operated using a **touch screen computing device** equipped with **Sonel Analysis** software (Windows) or **Sonel Analysis Mobile** app (Android). The user can supervise the measurements and conduct diagnostics while maintaining mobility – he doesn't even have to be near the analyzer. In typical applications, the device plays the role of a remote display and an intermediate storage of measurement data with the functionality of a router. Therefore, the user can also connect to it using a wireless network – for example, to transfer the collected registrations to a desktop computer.



Application

PQM-710 and PQM-711 are widely used in the professional power industry. They provide full 4-quadrant analysis, meeting the needs of energy consumers and producers, such as renewable energy, including photovoltaic and wind farms. They enable forecasting failures in distribution networks. They provide analysis of the load capacity of networks and transformers, as well as recording their current states. In addition, they are powerful investment tools. Thanks to PQM-710 and PQM-711, the user will obtain the necessary data for development of power infrastructure, predict potential problems, and finally – verify the correctness and quality of implementation.








Parameters

Parameter	Measuring range	Max. resolution	Accuracy
Alternating voltage (TRMS)	0.0...1000.0 V or 0.0...760.0 V*	4 significant digits	$\pm 0.1\% U_{nom}$
Crest Factor			
Voltage	1.00...10.00 (≤ 1.65 for voltage of 690 V)	0.01	$\pm 5\%$
Current	1.00...10.00 (≤ 3.6 for I_{nom})	0.01	$\pm 5\%$
Alternating current (TRMS)	depending on clamp**	4 significant digits	$\pm 0.1\% I_{nom}$ (error does not account for clamp error)
Frequency	40.00...70.00 Hz	0.01 Hz	± 0.01 Hz
Active, reactive, apparent and distortion power	depending on configuration (transducers, clamps)	4 significant digits	depending on configuration (transducers, clamps)
Active, reactive and apparent energy	depending on configuration (transducers, clamps)	4 significant digits	as power error
cosϕ and power factor (PF)	-1.00...1.00	0.01	± 0.03
tanϕ	-10.00...10.00	0.01	depends on error of active and reactive power
Harmonics and interharmonics			
Voltage	DC, 1...50	as for alternating voltage True RMS	$\pm 0.05\% U_{nom}$ for m.v. < 1% U_{nom} $\pm 5\%$ m.v. for m.v. $\geq 1\% U_{nom}$
Current	DC, 1...50	as for alternating current True RMS	$\pm 0.15\% I_{nom}$ for m.v. < 3% I_{nom} $\pm 5\%$ m.v. for m.v. $\geq 3\% I_{nom}$
THD			
Voltage	0.0...100.0% (relative to RMS value)	0.1%	$\pm 5\%$
Current			$\pm 5\%$
Active and reactive power of harmonics	depending on configuration (transducers, clamps)	depends on minimum current and voltage values	—
Angle between current and voltage harmonics	-180.0...+180.0°	0.1°	$\pm(n \times 1^\circ)$
K-Factor	1.0...50.0	0.1	$\pm 10\%$
Flicker index	0.20...10.00	0.01	$\pm 5\%$
Unbalance factor			
Voltage and current	0.0...20.0%	0.1%	$\pm 0.15\%$ (absolute error)
Measurement of control signals			
Voltage	up to 15% U_{nom} at 5.00...3000.00 Hz	4 significant digits	unspecified for <1% U_{nom} $\pm 0.15\%$ for 1...3% U_{nom} $\pm 5\%$ for 3...15% U_{nom}
Measurement of transients (PQM-711)			
Voltage	± 8000 V	4 significant digits	$\pm(5\% + 25$ V)

m.v. – measured value

* Depending on analyzer version

** F-1A1, F-2A1, F-3A1 clamp: 0...1500 A AC (5000 A_{p-p}) • F-1A, F-2A, F-3A clamp: 0...3000 A AC (10 000 A_{p-p}) • F-1A6, F-2A6, F-3A6 clamp: 0...6000 A AC (20 000 A_{p-p})
C-4A clamp: 0...1000 A AC (3600 A_{p-p}) • C-5A clamp: 0...1000 A AC/DC (3600 A_{p-p}) • C-6A clamp: 0...10 A AC (36 A_{p-p}) • C-7A clamp: 0...100 A AC (360 A_{p-p})

							
	C-4A	C-5A	C-6A	C-7A	F-1A1 / F-1A / F-1A6	F-2A1 / F-2A / F-2A6	F-3A1 / F-3A / F-3A6
	WACEGC4AOKR	WACEGC5AOKR	WACEGC6AOKR	WACEGC7AOKR	WACEGF1A1OKR WACEGF1AOKR WACEGF1A6OKR	WACEGF2A1OKR WACEGF2AOKR WACEGF2A6OKR	WACEGF3A1OKR WACEGF3AOKR WACEGF3A6OKR
Rated current	1000 A AC	1000 A AC 1400 A DC	10 A AC	100 A AC	1500 / 3000 / 6000 A AC		
Frequency	30 Hz...10 kHz	DC...5 kHz	40 Hz...10 kHz	40 Hz...1 kHz	40 Hz...10 kHz		
Output signal level	1 mV / 1 A	1 mV / 1 A	100 mV / 1 A	5 mV / 1 A	77.6 μ V / 1 A	38.8 μ V / 1 A	19.4 μ V / 1 A
Max. diameter of measured conductor	52 mm	39 mm	20 mm	24 mm	360 mm	235 mm	120 mm
Minimum accuracy	$\leq 0.5\%$	$\leq 1.5\%$	$\leq 1\%$	0.5%	1%		
Battery power	—	✓	—	—	—		
Lead length	2.2 m	2.2 m	2.2 m	3 m	2.2 m		
Measurement category	IV 300 V	IV 300 V	IV 300 V	III 300 V	IV 600 V		
Ingress protection	IP40			IP67			

SONEL ANALYSIS

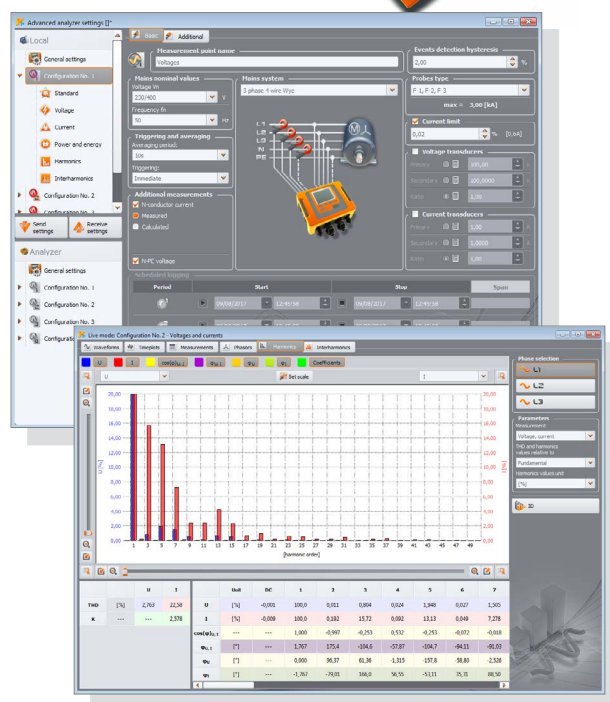


Sonel Analysis software – application delivered as standard accessory, indispensable for working with PQM-series analyzers. It enables:

- analyzer configuration,
- data reading from logger,
- preview of network parameters in real time (with capability of reading via GSM modem),
- deletion of data in the analyzer,
- data presentation in tables,
- data presentation in charts,
- data analysis in compliance with standard EN 50160 (reports) and other user defined reference conditions,
- independent support of multiple analyzers,
- analyzer firmware updates.

The software enables readout of selected parameters and their visualization in real time. These parameters are measured independently from the registration saved on the memory card. The user can view:

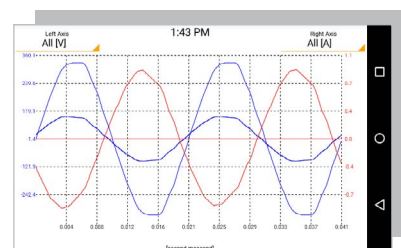
- charts of voltage and current progression (oscilloscope),
- charts of voltage and current over time,
- phasor diagram,
- measurements of multiple parameters,
- harmonics and harmonic powers (estimating the direction of harmonics),
- interharmonics.



Sonel Analysis Mobile



Mobile version of the program supports PQM-711 and PQM-710 power quality analyzers. It can be downloaded from the www.sonel.com website.



Standard accessories



3 x crocodile clip, black, 1 kV, 20 A
WAKROBL20K01



2 x crocodile clip, red, 1 kV, 20 A
WAKRORE20K02



Crocodile clip, blue, 1 kV, 20 A
WAKROBU20K02



Crocodile clip, yellow, 1 kV, 20 A
WAKROYE20K02

Voltage adapter with M4/M6 thread – set 5 pcs

WAADAM4M6



AC-16 line splitter

WAADAAC16



4 x magnetic voltage adapter – set

WAADAUMAGKPL



Straps for mounting on a pole – set – 1.2 m

WAPOZOPAKPL



DIN rail mounting bracket with positioning catches

WAPOZUCH3



2 x fasteners and bands for mounting the analyzer

WAPOZUCH4



XL2 carrying case

WAWALXL2



Data transfer and analysis

USB cable
WAPRZUSB

Sonel Analysis software
WAPROANALIZA4



Calibration certificate issued by an accredited laboratory

Optional accessories



F-1A flexible clamp
(Φ=360 mm)

1.5 kA: WACEGF1A10KR
3 kA: WACEGF1A0KR
6 kA: WACEGF1A60KR



F-2A flexible clamp
(Φ=235 mm)

1.5 kA: WACEGF2A10KR
3 kA: WACEGF2A0KR
6 kA: WACEGF2A60KR



F-3A flexible clamp
(Φ=120 mm)

1.5 kA: WACEGF3A10KR
3 kA: WACEGF3A0KR
6 kA: WACEGF3A60KR



C-4A clamp
(Ø 52 mm)
1000 A AC

WACEG4A0KR



C-5A clamp
(Ø 39 mm)
1000 A AC/DC

WACEG5A0KR



C-6A clamp
(Ø 20 mm)
10 A AC

WACEG6A0KR



C-7A clamp
(Ø 24 mm)
100 A AC

WACEG7A0KR



L2 carrying case
for clamps

WAWALL2



Magnetic voltage adapter

black
WAADAUMAGKBL
blue
WAADAUMAGKBU



Flat test clip
(grip – banana socket) (5 pcs)

WASONKCB1KPL



Test clips with steel jaws – set (5 pcs)

WASONKGB1KPL



Adapter for control terminals (5 pcs)

WAADAPRZKPL1



AGT-16T industrial socket adapter
16 A / 32 A

WAADAAGT16T
WAADAAGT32T



ASX-1 piercing adapter – set (4 pcs)

WAADAPRZASX1



PQM magnetic strap (2 pcs)

WAPOZUCH5



AGT-16C three-phase socket adapter
16 A / 32 A (PEN)

WAADAAGT16C
WAADAAGT32C



AGT-16P three-phase socket adapter
16 A / 32 A

WAADAAGT16P
WAADAAGT32P



AGT-63P three-phase socket adapter
63 A

WAADAAGT63P



GPS antenna

WAPOZANT10GPS

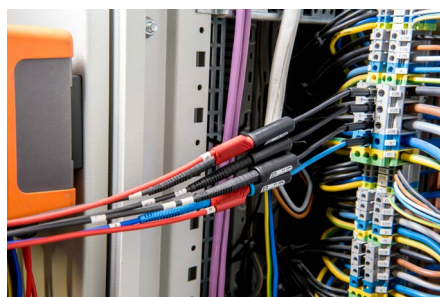


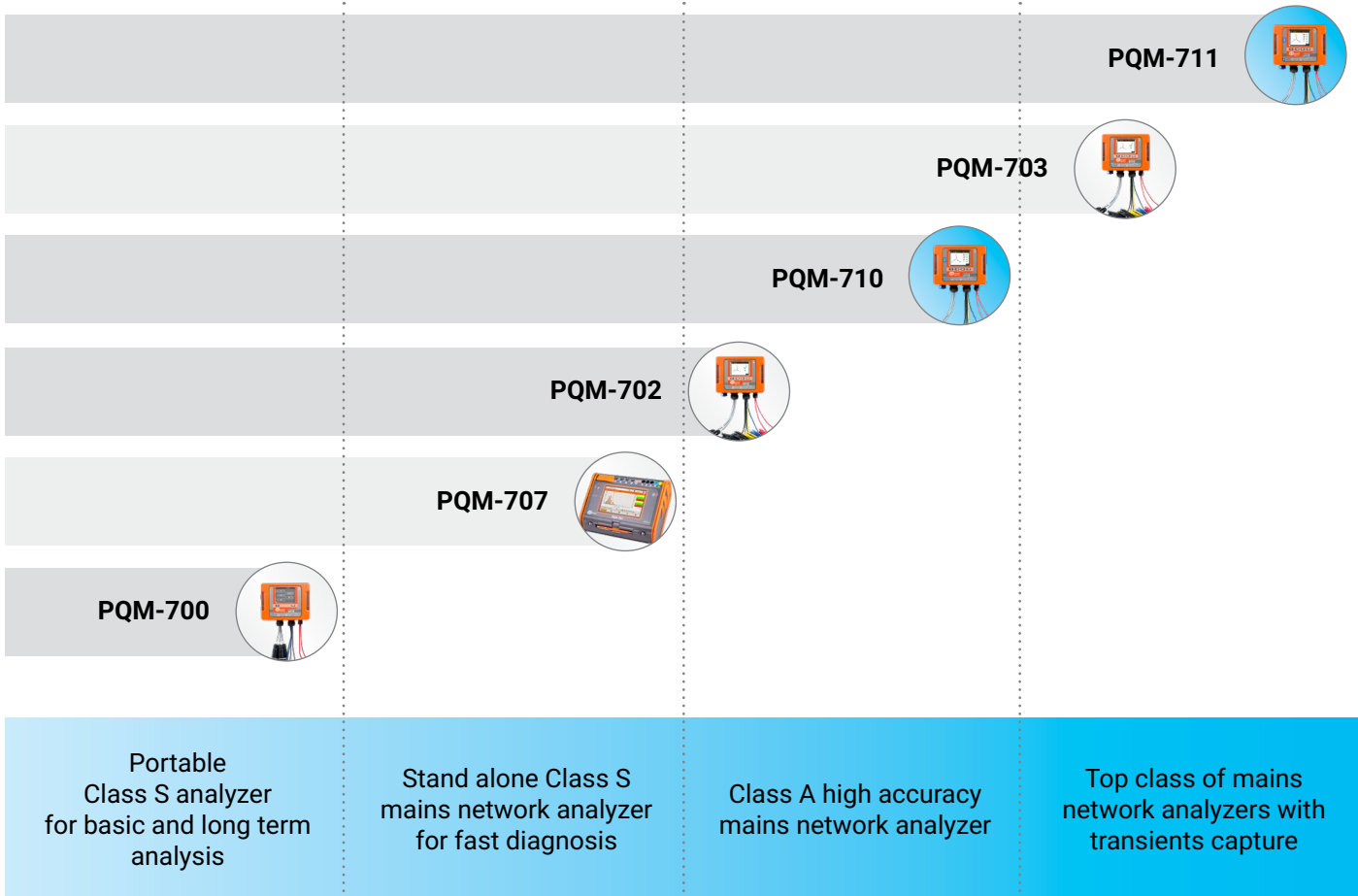
GSM repeater

WAPOZANTREPEATER



Calibration certificate
with accreditation





Get to know the instrument before buying

www.sonel.com

Expand your capabilities with additional accessories

X-ON Electronics

Largest Supplier of Electrical and Electronic Components

Click to view similar products for [Sonel](#) manufacturer:

Other Similar products are found below :

[AGT-16P](#) [AGT-32P](#) [C-3](#) [C-6A](#) [C-7A](#) [F-3A](#) [K-01](#) [K-02](#) [N-1](#) [S-2](#) [WAKROYE20K02](#) [WAPOZSZE2](#) [WAPRZ050YEBBSZ](#)
[WAPRZ1X2BUBB](#) [WAPRZ1X2REBB](#) [WAPRZ1X2YEBS](#) [WAPRZ1X8BLBB](#) [WAPRZ1X8REBB](#) [WAPRZCMP1](#) [WASONBUOGB1](#)
[WASONG30](#) [WASONYEOGB1](#) [WMDEMPI535](#) [WMGBCMM10](#) [WMGBCMM11](#) [WMGBCMM30](#) [WMGBCMM40](#) [WMGBCMP200](#)
[WMGBCMP2000](#) [WMGBCMP3000](#) [WMGBCMP400](#) [WMGBCMP401](#) [WMGBLKZ720](#) [WMGBLXP2](#) [WMGBMPI506](#) [WMGBP4](#)
[WMGBP5](#) [WMGBP6](#) [WMGBTG1](#) [WMGBTKF12](#) [WMGBTKF13](#)