



»» Features

- Micro 280 automotive relay.
- SPNO & SPDT contact configurations.
- NO contacts switch 35A resistive load, NC contacts switch 20A resistive load, 100,000 ops., 23°C.
- Operating ambient temperature -40°C to 125°C.
- Optional resistor or diode for coil transient suppression.
- Complies with RoHS-Directive 2011/65/EU and ELV-Directive 2000/53/EC.

»» Type List

Terminal style	Contact form	Designation (provided with)	Enclosure style		
			Dust cover	Flux tight	Sealed type washable
Socket terminal	1A (SPNO)	-----	301-1A-D	301-1A-C	301-1A-S
		Resistor	301-1A-D-R1	301-1A-C-R1	301-1A-S-R1
		Diode	301-1A-D-D1	301-1A-C-D1	301-1A-S-D1
	1C (SPDT)	-----	301-1C-D	301-1C-C	301-1C-S
		Resistor	301-1C-D-R1	301-1C-C-R1	301-1C-S-R1
		Diode	301-1C-D-D1	301-1C-C-D1	301-1C-S-D1

»» Ordering Information

301 - 1A - D -
 1 2 3 4 5

- | | |
|--|--|
| 1. 301 -- Basic series designation
2. 1A -- Single pole normally open
1C -- Single pole double throw
3. D -- Dust cover
C -- Flux tight
S -- Sealed type washable | 4. Blank -- Standard type
R1 -- Coil parallel with 1/2W resistor for
6V 180Ω, 12V 680Ω, 24V 2700Ω
D1 -- Coil parallel with diode 1N4007
the diode anode on # 85 terminal
5. <input type="checkbox"/> -- Coil voltage (please refer to the
coil rating data for the availability) |
|--|--|

»» Contact Rating

Resistive load	1A	1C
	35A 14VDC 15A 28VDC	NO: 35A 14VDC, 15A 28VDC NC: 20A 14VDC, 10A 28VDC

»» Coil Rating (DC)

Rated voltage	Rated current ±10 % at 23°C		Coil resistance ±10 % at 23°C		Max. continuous voltage at 85°C ⁽¹⁾	Pick up voltage (Max.) at 23°C	Drop out voltage (Min.) at 23°C	Power consumption at rated voltage	
	without resistor	with resistor	without resistor	with resistor				without resistor	with resistor
6V	188 mA	222 mA	32 Ω	27 Ω	133 % of rated voltage	60 % of rated voltage	10 % of rated voltage	approx. 1.2W	approx. 1.4W
12V	98 mA	115 mA	123 Ω	104 Ω					
24V	50 mA	59 mA	483 Ω	410 Ω					

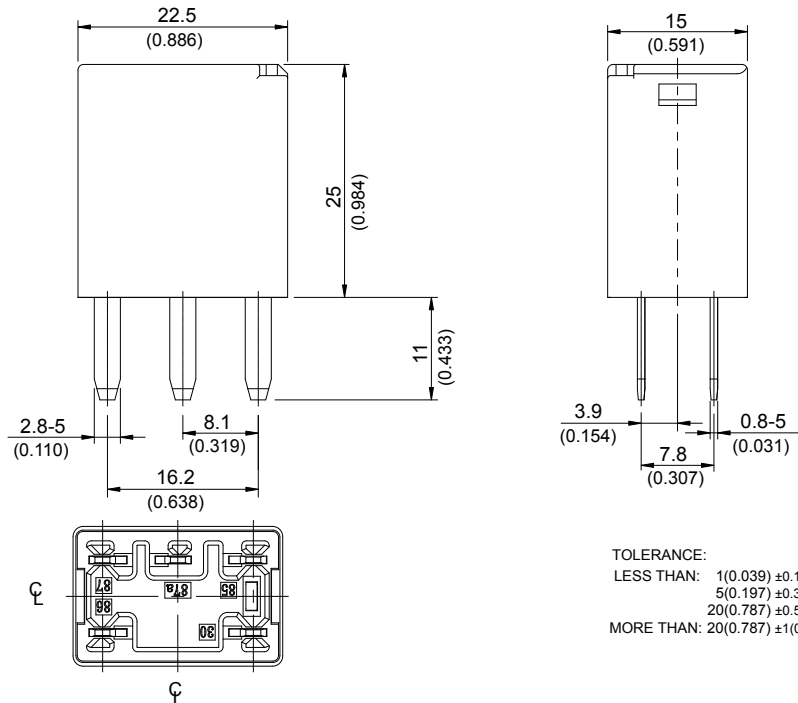
Note : (1) With continuous contact current 15A.

»» Specification

Contact material	AgSnO alloy	
Contact voltage drop ⁽¹⁾	Typ. 40mV at 10A	
Operate time ⁽¹⁾	10ms Max.	
Release time ⁽¹⁾	10ms Max.	
Insulation resistance ⁽¹⁾	20MΩ Min. (DC 500V)	
Dielectric strength ⁽¹⁾	Between open contact	: AC 500V , 50/60Hz 1 min.
	Between contact and coil	: AC 500V , 50/60Hz 1 min.
Vibration resistance	Operating extremes	10~500Hz , 5.0G
	Damage limits	10~500Hz , 5.0G
Shock resistance	Operating extremes	10G
	Damage limits	100G
Life expectancy	Mechanical	10,000,000 ops. (frequency 18,000 ops./hr.)
	Electrical	100,000 ops. (frequency 1,800 ops./hr.)
Operating ambient temperature	-40~+125°C (no freezing)	
Weight	Approx. 20 g	

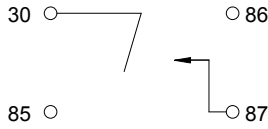
Note : (1) Initial value. Operate and release time excluding contact bounce.

»» Outline Dimensions

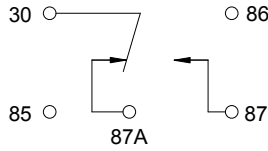


»» Wiring Diagram BOTTOM VIEW

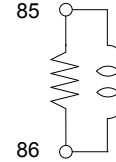
1A



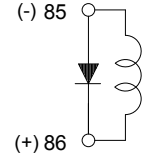
1C



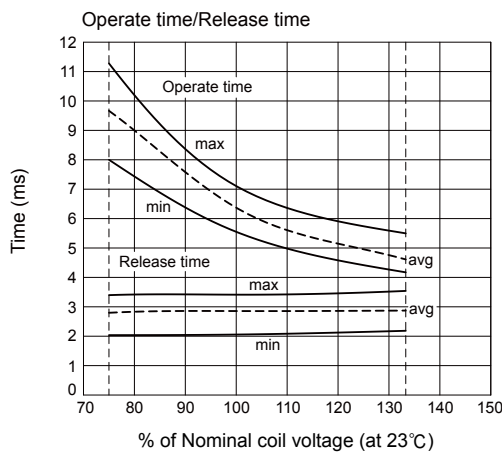
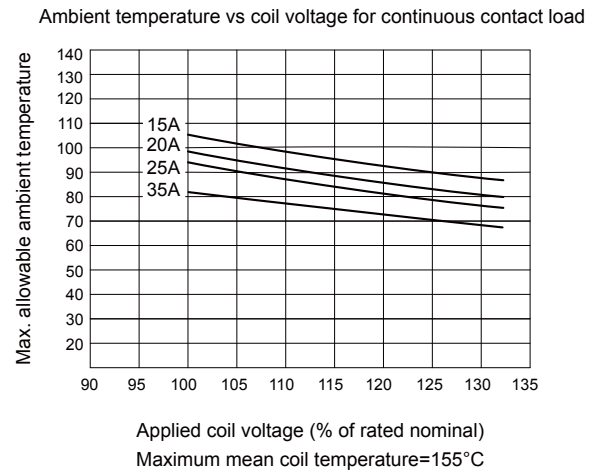
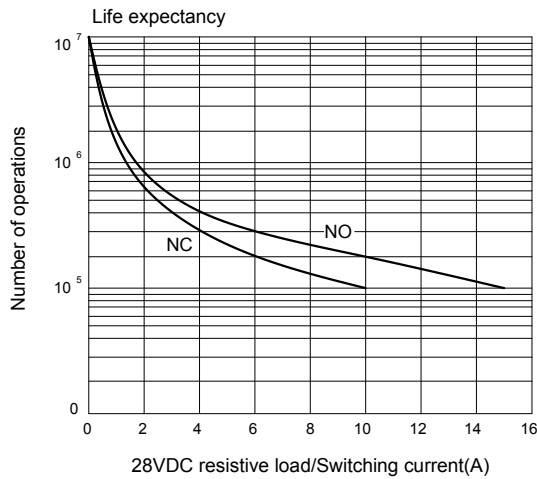
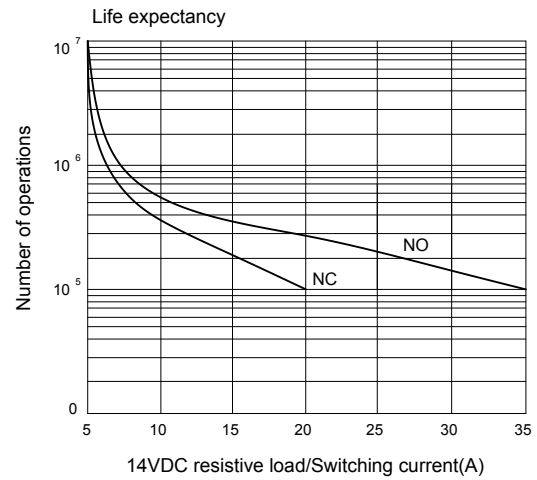
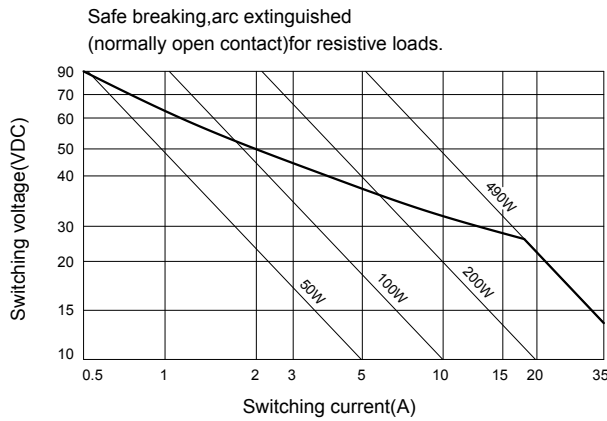
R1



D1



»» Engineering Data



X-ON Electronics

Largest Supplier of Electrical and Electronic Components

Click to view similar products for [Automotive Relays](#) category:

Click to view products by [Song Chuan](#) manufacturer:

Other Similar products are found below :

[7-1414968-8](#) [7-1617345-6](#) [9-1617516-5](#) [G5CE1ASIDC12](#) [1393204-2](#) [1393302-3](#) [13Z99A115-0074](#) [1432872-1](#) [AR4-15F11-S01](#) [AR4-15H11](#)
[1617057-2](#) [1617058-6](#) [1617518-5](#) [2-1617057-2](#) [2-1617057-6](#) [2-1617058-3](#) [CB1F-M-12V-H15](#) [898H-1AH-D-001-12VDC](#) [AR4-11F11](#)
[AR4-15F11](#) [AR4-41F11](#) [24198-1](#) [4-1617057-0](#) [41FZ-200ACG-BSL](#) [5-1616920-2](#) [5-1617052-9](#) [5407-0011-HS](#) [CB1AF-M-12V-H59](#) [5-](#)
[1617346-8](#) [103-1AH-C-12VDC](#) [V23134A1052X299](#) [6-1393302-1](#) [897H-1AH-D-R1-U01-12VDC](#) [FTR-P3CP024W1-06](#) [1-1617057-8](#) [3-](#)
[1393305-1](#) [5436-0001-HS](#) [V23086-R1851-A502](#) [V23136-A0004-X075](#) [898H-1AH-D1SW-R1-12VDC](#) [RH4C1P2607](#) [RE031005](#)
[V23134M0052G242](#) [1393204-1](#) [23234B0001X001-EV-144](#) [AZ979-1A-24D](#) [2-1904020-1](#) [V23134B0052C642](#) [V23134B0053C642](#) [V23234-](#)
[A1001-X036](#)