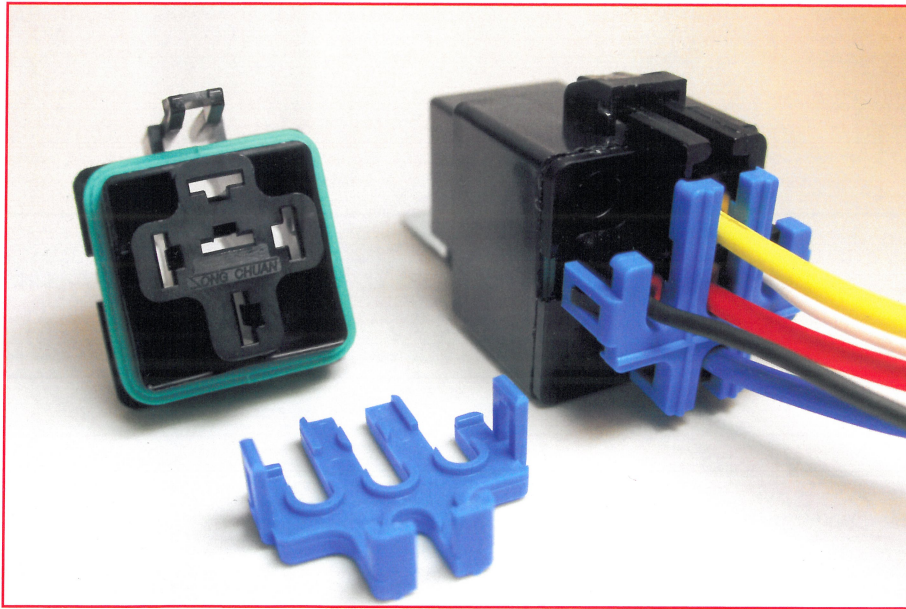




# Weather Proof your connections with Song Chuan's new Weatherproof Sockets Easy Push-to-seat terminals-**with TPA**

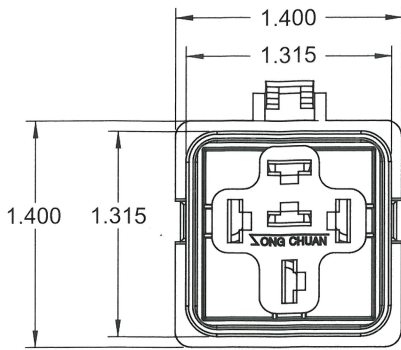


SC P/N	Item Description	O.D.	Relay
896WPT	630 - Mini ISO Socket with Seal		896-D1SW
SBWP	Wire Seal - Blank Plug		
S12WP	Wire Seal - 12 AWG GXL	.135" - .154"	
S14WP	Wire Seal - 14-16 AWG GXL	.102" - .134"	
S18WP	Wire Seal - 18-20 AWG GXL	.063" - .094"	
<b>SC Purchase Price</b>			
896WPT	\$1.14 with TPA	@ 10K QTY	
ANY Seals	\$0.08	@ 10K QTY	

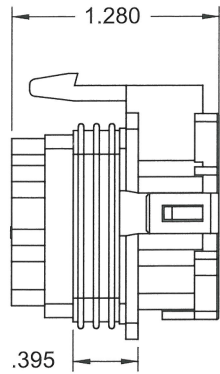
## SUGGESTED AMP TERMINALS

60253=12-16 AWG - 42100=18 AWG

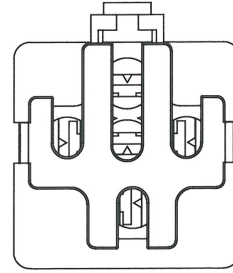
## 4/5 PIN WEATHERPROOF AUTOMOTIVE RELAY SOCKET



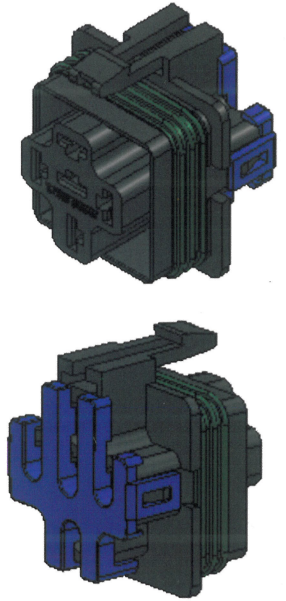
896WPT



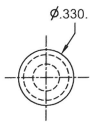
hole diameter  
.314"



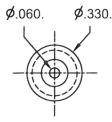
[ 6.3mm load pins ]  
[ ISO 7588 footprint ]



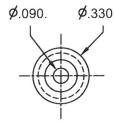
## SEALS



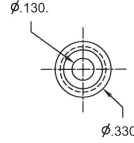
SBWP



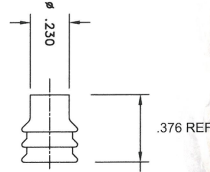
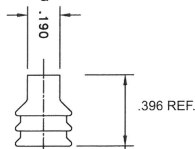
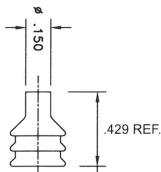
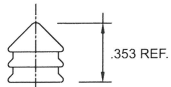
S18WP



S14WP



S12WP



## Specifications | Weatherproof Sockets & Seals have been tested to rigorous SAE standards:

**Material Specs.:** Heat Resistant Nylon - Dupont Zytel 103 FHS

**Salt Spray:** ASTM B117/SAE1455,

**Dust Bombardment:** SAE 1455, sect. 4.7

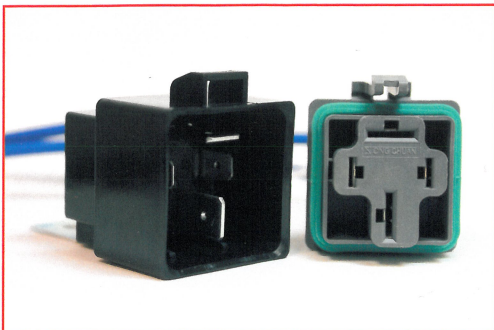
**Fluid Compatibility:** SAE 1455, sect. 4.4

**Temp Range:** - 40°C to + 125°C

**Compliant to GMW 3191 sect. 4.9:** when used with recommended terminals and seals.

Contact us for free sample and trial

## Coming Soon



897WPT High Power



2841 Center Port Circle, Pompano Beach, Florida 33064 | 954-788-5889

For use instructions please visit [www.songchuanusa.com](http://www.songchuanusa.com)

## X-ON Electronics

Largest Supplier of Electrical and Electronic Components

*Click to view similar products for [Relay Sockets & Fixings](#) category:*

*Click to view products by [Song Chuan](#) manufacturer:*

Other Similar products are found below :

[00008258500](#) [00111976502](#) [0000-825-81-00](#) [60SY4S05](#) [M41G](#) [670-0125](#) [670-0127](#) [6700152](#) [670-0153](#) [6700156](#) [D258-2TS00](#) [70-309](#) [7-1393143-3](#) [7-1616360-5](#) [8000-DG2-5](#) [911361](#) [9-1616339-5](#) [PJF11N](#) [GDA12HA](#) [GDA12HD](#) [GDA12SA](#) [GDA12SD](#) [GDA16HD](#) [GDA22HA](#) [GDA95A](#) [GDA95D](#) [GFX20](#) [PT08QN](#) [PT 1/8 D = 3.2](#) [GUA1](#) [GUA2-11](#) [GUA4-04](#) [GUA4-31](#) [GUM5R](#) [GUR-120](#) [GUR-24](#) [GUR-240](#) [GUR-277](#) [GURX-277](#) [GUW12](#) [GUW95](#) [GUZ63L](#) [R99-11 FOR MY\(NAMEPLATE\)](#) [D52PR2T](#) [RES100K](#) [1310H-HDC](#) [1390H-1ST](#) [1393824-3](#) [1390H-2PC](#) [1410-2SM](#)