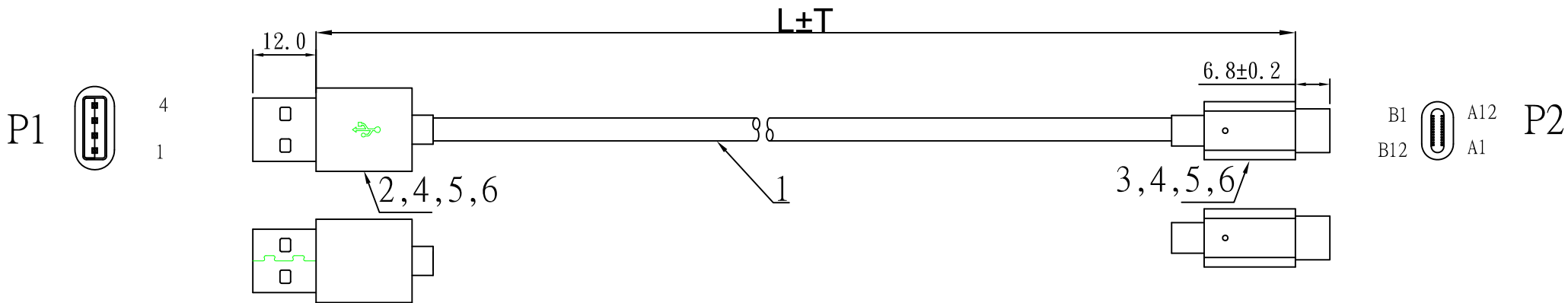
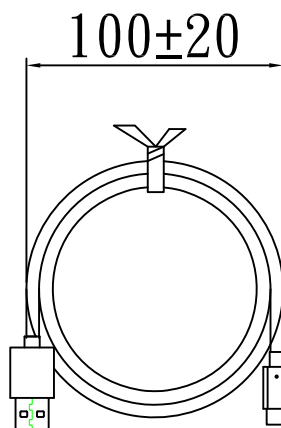


REV	ECRN	DATE
1	NEW PRODUCTION	20190528



P/N	L(mm)	T(mm)	Cutting line size(mm)	朋联料号
	300	10	300	9.00ACCA2532.003R
	800	10	800	9.00ACCA2532.008R
	2000	30	2000	9.00ACCA2532.020R

- NOTES:
- 1.ELECTRICAL TEST:100%OPEN,SHORT&MIS WIRE TEST.
 - 2.CONTACT RESISTANCE:2 ohm,
 - 3.INSULATOR RESISTANCE:5M ohm.
 - 4.HIGH VOLTAGE:DC 300V 0.01sec.
 - 5.MUST BE ROHS COMPLIANT.



接线表

P1	P2	
1	RED	A4+A9+B4+B9 VCC
2	WHITE	A7 D-
3	GREEN	A6 D+
4	DRAIN	A1 A12 B1 B12 GND
	BRAID	SHELL

NO.	PART NO	ITEM	DESCRIPTION	Q'TY	UNIT
	I.000001.0400R	TIE	L=100mm COLOR BLACK	1	PCS
⑥	J.000008.0500R	TIN WIRE	TIN WIRE OD:0.8MM	2.5	G
⑤	C.085P01.0200R	MOLDING	TPE 85A BLACK	10	G
④	C.0000P00.0000R	MOLDING	PE	3	G
③		CONNECTOR	USB 2.0 TYPE C/M GOLDDED PLATED SHELL NICKEL PLASTIC:BLACK 56.0KΩ	1	PCS
②	B.01004M.0N01R	CONNECTOR	USB A/M 4P PIN GOLDDED PLATED SHELL NICKEL PLASTIC: WHITE Double sided insert	1	PCS
①		CABLE	NO UL32AWG (11/0.06TS)*2C+23AWG (98/0.0.06TS)*1C+D (41/0.08TS)*1C+AL+B(16/4/0.08TS) JACKET TPE 65A BLACK OD:2.8MM	1	PCS

RoHS COMPLIANT		朋联电子有限公司 DongGuan PengLian Electronics Co.,Ltd TEL:076938835098/38835095 FAX:076938835091	
比例:	FREE	TITLE: USB 2.0 A/M TO USB 2.0 TYPE C	
DRAWN BY		单位:	mm
CHECKED BY		SUPPLIER`S ITEM: 9.00ACCA2532.XXXR	
APPROVED BY		CUSTOMER: SPARK FUN	
		CUSTOMER`S ITEM:	
		DRAWING NO.	ACCA-2532
		DATE	2019.05.28

X-ON Electronics

Largest Supplier of Electrical and Electronic Components

Click to view similar products for [SparkFun Accessories](#) category:

Click to view products by [SparkFun](#) manufacturer:

Other Similar products are found below :

[DEV-17119](#) [SEN-16474](#) [COM-11450](#) [BOB-00495](#) [BOB-00497](#) [PRT-08619](#) [PRT-12702](#) [SEN-13582](#) [TOL-11468](#) [ROB-09065](#) [COM-12999](#)
[COM-12986](#) [COM-11120](#) [ROB-11965](#) [COM-11222](#) [PRT-12845](#) [CAB-13685](#) [PRT-10210](#) [PRT-14490](#) [TOL-10603](#) [COM-09278](#) [PRT-08023](#)
[COM-08033](#) [DEV-14052](#) [PRT-00111](#) [PRT-08432](#) [TOL-09317](#) [TOL-10997](#) [PRT-00743](#) [PRT-14492](#) [TOL-14228](#) [COM-13247](#) [PRT-11026](#)
[CAB-10646](#) [TOL-08964](#) [PRT-00116](#) [PRT-08506](#) [CAB-09741](#) [COM-10800](#) [SEN-14282](#) [DEV-14012](#) [CAB-14043](#) [COM-14452](#) [TOL-14508](#)
[DEV-13814](#) [GPS-00574](#) [PRT-14417](#) [PRT-08231](#) [COM-09939](#) [PRT-13839](#)