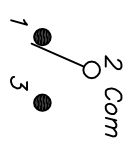
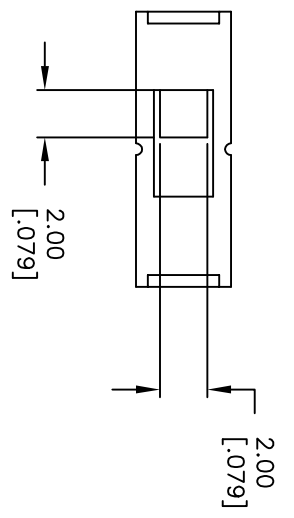


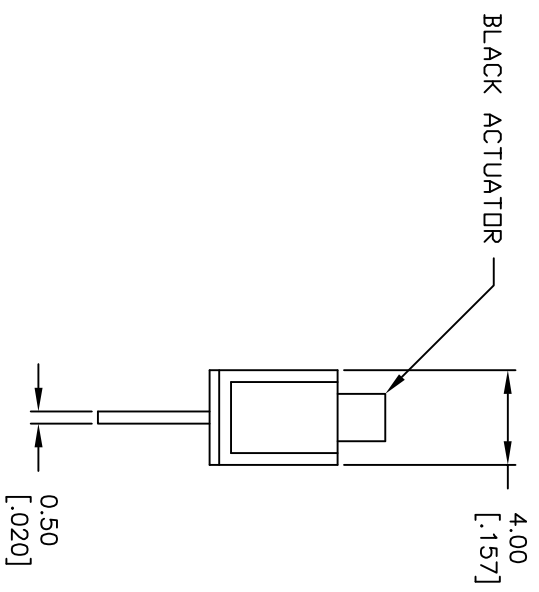
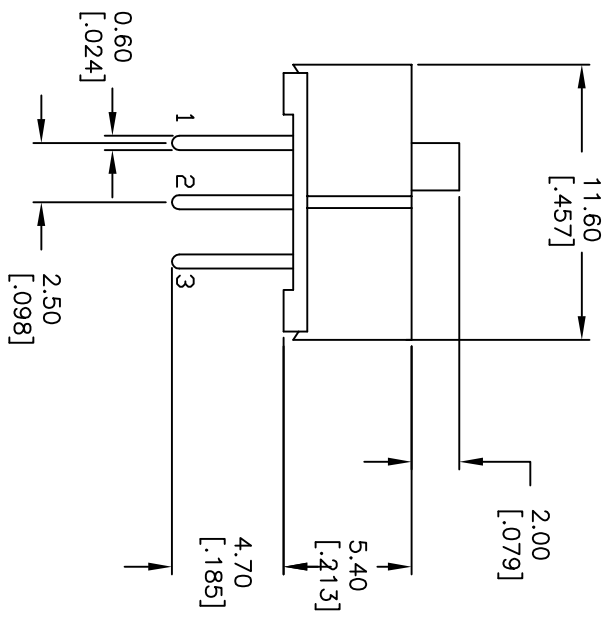
RECOMMENDED P.C.B. LAYOUT  
NOT TO SCALE



CIRCUIT: SPDT  
TIMING: NON SHORTING

NOTES:

1. ALL DIMENSIONS IN MM [INCH]
2. GENERAL TOLERANCE: X.X=±0.4  
X.XX=±0.25
3. TERM. NOS. FOR REFERENCE ONLY.
4. ELECTRICAL RATING: 0.2A @30VDC
5. CONTACT MATERIAL: Copper Alloy W/Silver Plating
6. OPERATING FORCE: 250±100gf
7. TRAVEL: 2.5mm
8. CONTACT RESISTANCE: 50MILLI-OHMS Max.
9. DIELECTRIC STRENGTH: 500V RMS@ SEA LEVEL.
10. INSULATION RESISTANCE: 100Mega-OHMS Min.
11. OPERATING TEMP.: -20°C to 70°C



BLACK ACTUATOR

C	17823	ADDED TERMINAL LENGTH DIM.	10/30/07	BF
B	11770	REVISED AND REDRAWN	10/22/01	CJB
REV.	ECN NO.	DESCRIPTION	DATE	CHKD

THE INFORMATION CONTAINED IN THIS DOCUMENT IS PROPRIETARY TO E-SWITCH AND IS NOT TO BE COPIED OR TRANSFERRED



TITLE		EG1218	
SCALE	DATE	DR	DWG
3:1	10/30/07	BF	P040040
REV		C	

## X-ON Electronics

Largest Supplier of Electrical and Electronic Components

*Click to view similar products for [SparkFun Accessories](#) category:*

*Click to view products by [SparkFun](#) manufacturer:*

Other Similar products are found below :

[DEV-17119](#) [SEN-16474](#) [COM-11450](#) [BOB-00495](#) [BOB-00497](#) [PRT-08619](#) [PRT-12702](#) [SEN-13582](#) [TOL-11468](#) [ROB-09065](#) [COM-12999](#)  
[COM-12986](#) [COM-11120](#) [ROB-11965](#) [COM-11222](#) [PRT-12845](#) [CAB-13685](#) [PRT-10210](#) [PRT-14490](#) [TOL-10603](#) [COM-09278](#) [PRT-08023](#)  
[COM-08033](#) [DEV-14052](#) [PRT-00111](#) [PRT-08432](#) [TOL-09317](#) [TOL-10997](#) [PRT-00743](#) [PRT-14492](#) [TOL-14228](#) [COM-13247](#) [PRT-11026](#)  
[CAB-10646](#) [TOL-08964](#) [PRT-00116](#) [PRT-08506](#) [CAB-09741](#) [COM-10800](#) [SEN-14282](#) [DEV-14012](#) [CAB-14043](#) [COM-14452](#) [TOL-14508](#)  
[DEV-13814](#) [GPS-00574](#) [PRT-14417](#) [PRT-08231](#) [COM-09939](#) [PRT-13839](#)