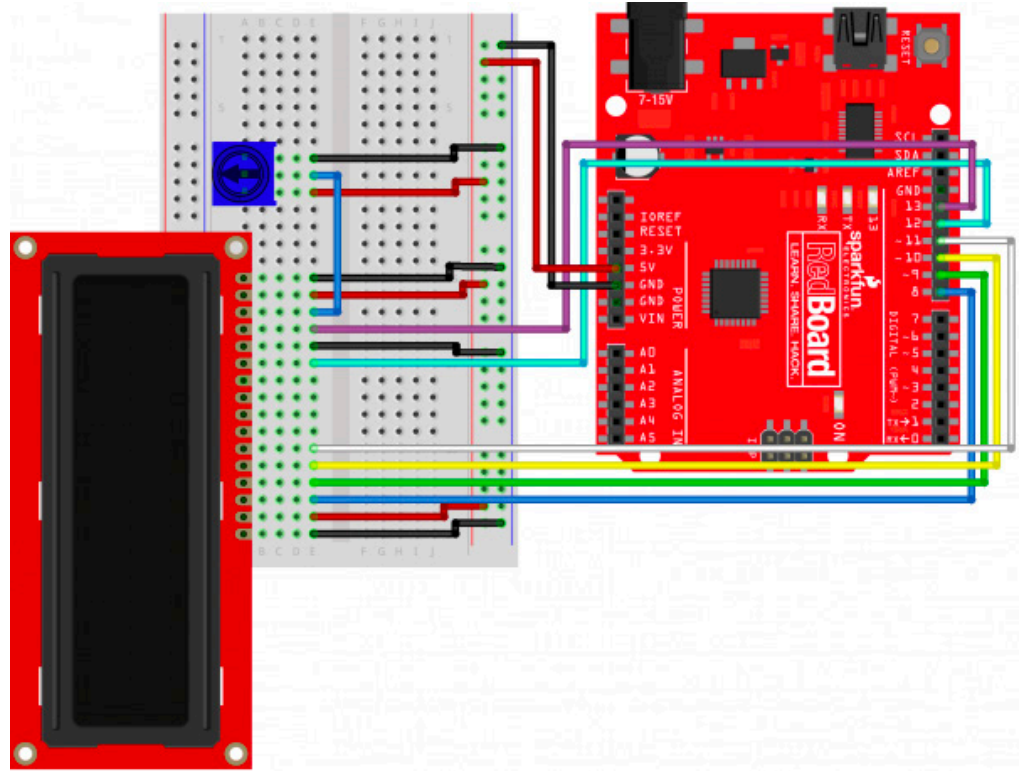


# SparkFun Inventor's Kit: Corrections

Please Note: All of these corrections have been made to the online version of the SIK Guide.




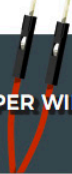

## Page 73

The correct circuit diagram for circuit 4A is as follows:




## Page 82

The **YOU NEED** parts list is missing a Buzzer, which is needed to build circuit 4C. The correct parts list is shown below.

<b>YOU NEED</b>	 LCD DISPLAY	 POTENTIOMETER	 PUSH BUTTON	 20 JUMPER WIRES	 PIEZO BUZZER
	AA BATTERY HOLDER	DUAL LOCK TAPE	4 AA BATTERIES	SCISSORS	(NOT INCLUDED)

## Page 84

The circuit diagram is correct, however the coordinates listed for the Buzzer and the Jumper Wires that connect the Buzzer to the RedBoard are incorrect. The correct coordinates are:

Component	RedBoard	Breadboard	Breadboard
Buzzer 		G6 (Buzzer +)	G8 (Buzzer -)
Jumper Wire	Digital Pin 6	J6	
Jumper Wire		J8	GND Rail (-)

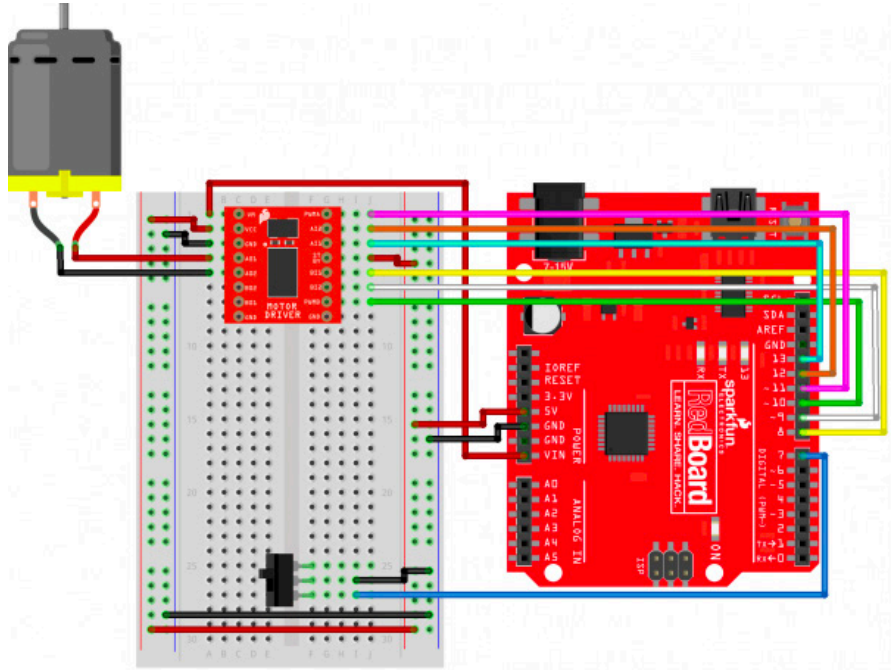
## Page 93

The correct circuit diagram for circuit 5A is as follows:

Changes made to the circuit diagram are also reflected in the hookup table revisions shown below.

Component	RedBoard	Breadboard
Jumper Wire	Digital Pin 8	J5
Jumper Wire	Digital Pin 9	J6
Jumper Wire	Digital Pin 10	J7
Jumper Wire	Digital Pin 11	J1
Jumper Wire	Digital Pin 12	J2
Jumper Wire	Digital Pin 13	J3

Please make sure that you are using the most up-to-date version of the SIK v4.0a code (SIK\_Guide\_Code-V\_4.0a) with this diagram.



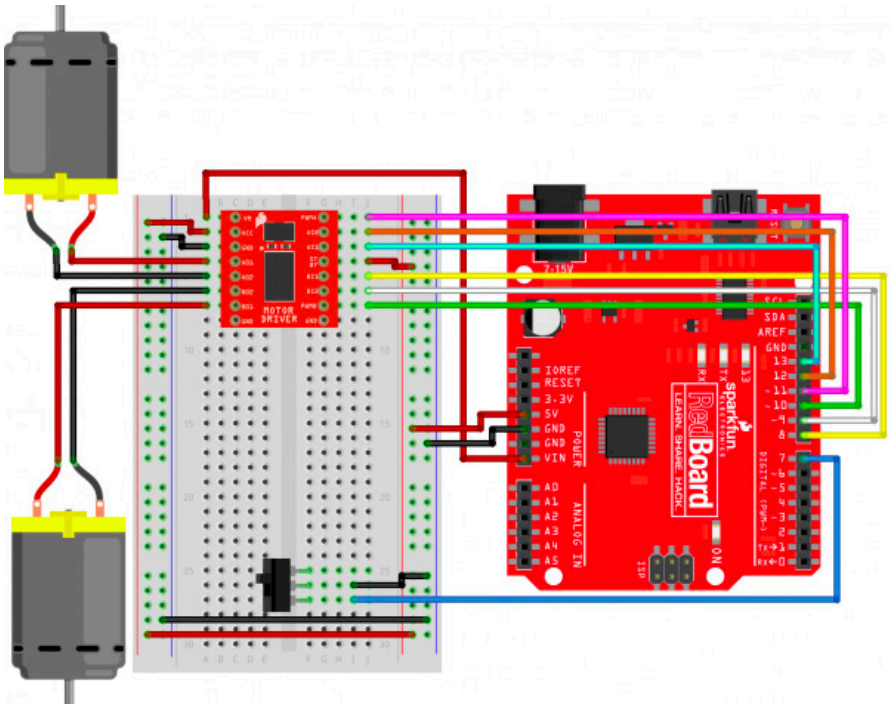
## Page 98

The correct circuit diagram for circuit 5B is as follows:

Changes made to the circuit diagram are also reflected in the hookup table revisions shown below.

Component	RedBoard	Breadboard
Jumper Wire	Digital Pin 8	J5
Jumper Wire	Digital Pin 9	J6
Jumper Wire	Digital Pin 10	J7
Jumper Wire	Digital Pin 11	J1
Jumper Wire	Digital Pin 12	J2
Jumper Wire	Digital Pin 13	J3

Please make sure that you are using the most up-to-date version of the SIK v4.0a code (SIK\_Guide\_Code-V\_4.0a) with this diagram.

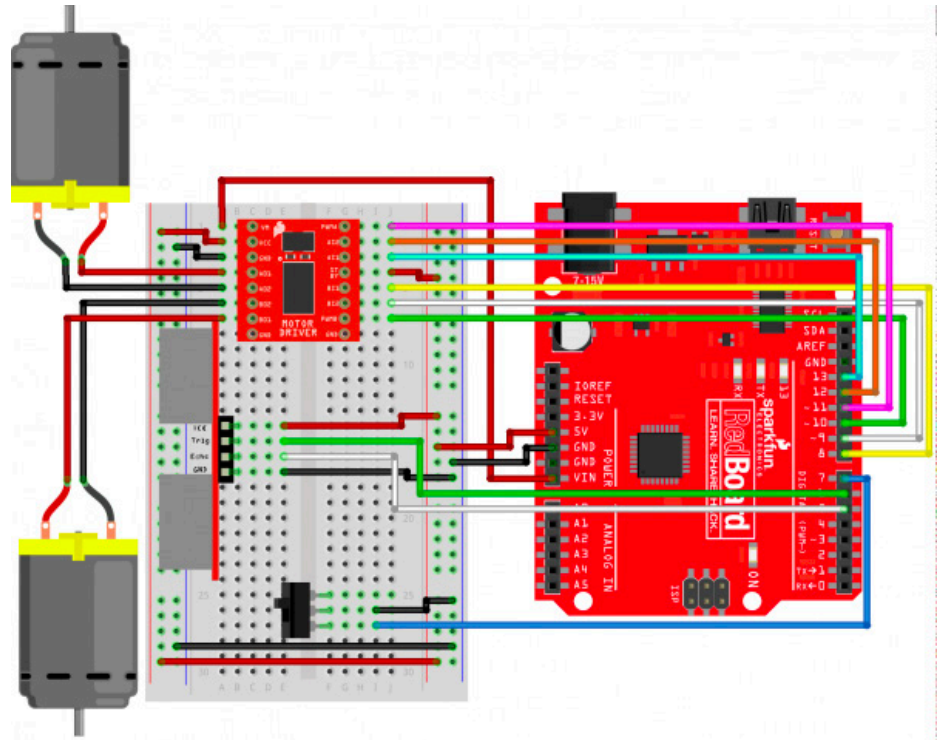


## Page 103

The correct circuit diagram for circuit 5C is as follows:

Changes made to the circuit diagram are also reflected in the hookup table revisions shown below.

Component	RedBoard	Breadboard
Jumper Wire	Digital Pin 8	J5
Jumper Wire	Digital Pin 9	J6
Jumper Wire	Digital Pin 10	J7
Jumper Wire	Digital Pin 11	J1
Jumper Wire	Digital Pin 12	J2
Jumper Wire	Digital Pin 13	J3



Please make sure that you are using the most up-to-date version of the SIK v4.0a code (SIK\_Guide\_Code-V\_4.0a) with this diagram.

## SIK Code

The changes made to Project 5's circuit diagrams also necessitate a change to the code for each circuit. Please make sure you are using the most up-to-date SIK code, which can be downloaded at the following URL: [www.sparkfun.com/SIKcode](http://www.sparkfun.com/SIKcode)

## X-ON Electronics

Largest Supplier of Electrical and Electronic Components

*Click to view similar products for [Development Boards & Kits - AVR category](#):*

*Click to view products by [SparkFun manufacturer](#):*

Other Similar products are found below :

[3264 ATAVRPARROT ATSAMR21B18MZ210PAT CS-EASE-03 EV35F40A A100053 ARDUINO MKR ENV SHIELD REV2](#)  
[ARDUINO PORTENTA BREAKOUT TPX00031 SENSOR KIT ARDUINO ETH SHIELD 2 WITHOUT POE ABX00047 IOT STARTER](#)  
[CARRIER NICLA SENSE ME NICLA VISION NANO RP2040 CONNECT WITHOUT HEADERS NANO RP2040 CONNECT WITH](#)  
[HEADERS ARDUINO ENGINEERING KIT REV2 EXPLORE IOT KIT 1222 MIKROE-2474 1260 KIT0018 1405 DEV-10914 1500](#)  
[1639 1657 174 193 2000 2010 3208 ATRCB256RFR2 ATXMEGAA1U-XPRO 2085 ATSTK600-SC48 2290 2488 DEV-11520 2590](#)  
[296 3000 ATAVRBLE-IOT ATTINY416-XNANO DFR0010 DFR0100 DFR0164 DFR0191 DFR0221 DFR0222 DFR0225](#)