

4

3

2

1

.6195
[15,735]

.5640
[14,326]

.6250
[15,875]

.3200
[8,128]

.6250
[15,875]

.8300
[21,082]

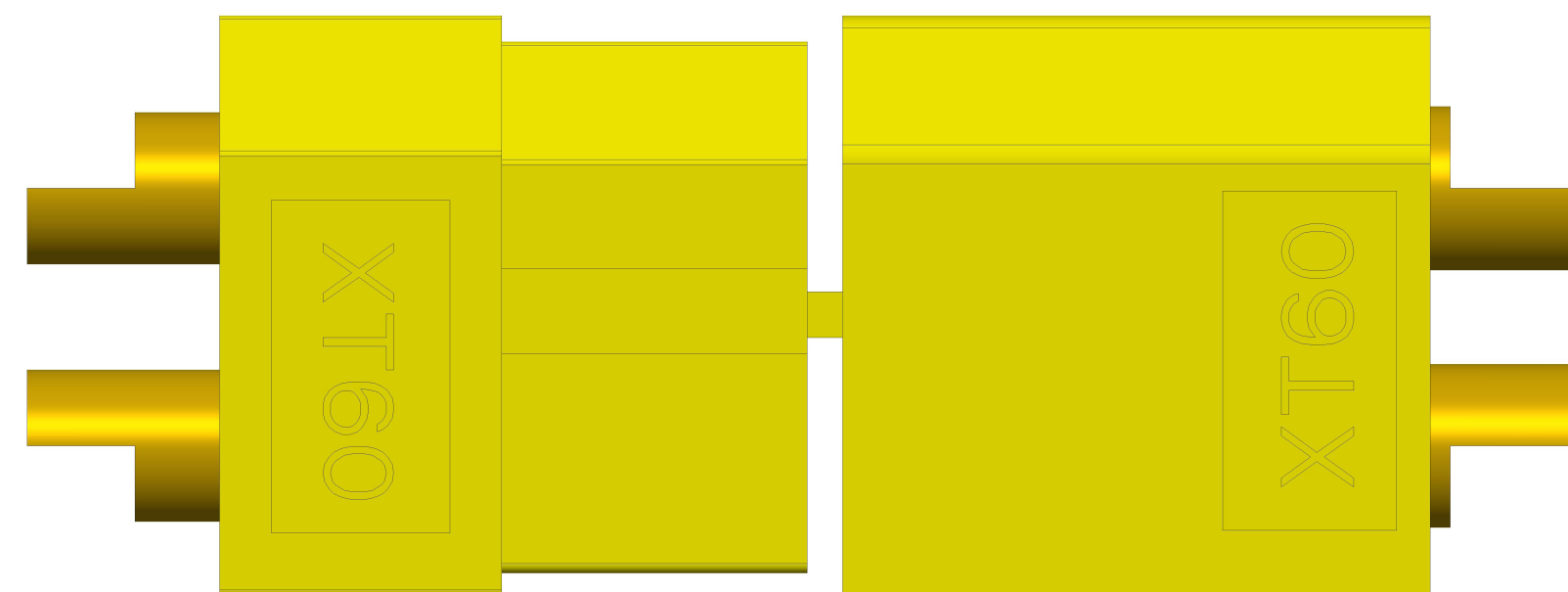
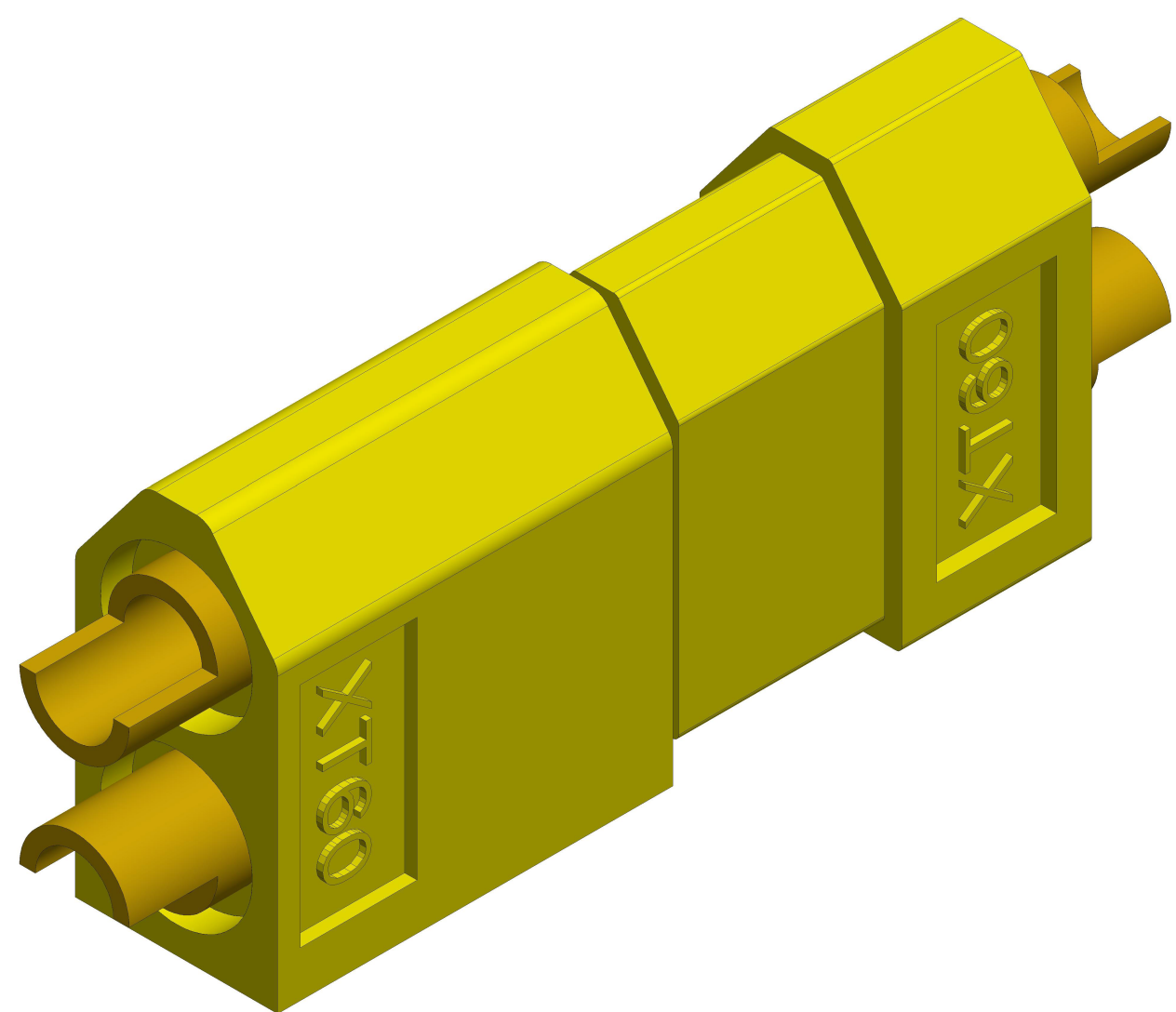
.6195
[15,735]

.6195
[15,735]

.6250
[15,875]

.3200
[8,128]


.7865
[19,977]



SCALE 5.000

These connectors are made from high-temp nylon with gold-plated spring pins or sockets molded in. The shape of the XT60 prevents reverse polarity, and when plugged in the connection is super-solid. Perfect for applications up to and beyond 65A continuous draw. Sold in pairs of 1 male and 1 female connector.

NOTES:

MATERIAL:	Nylon + Metal	MODEL NAME:	XT60 Connector	
XT60 Connectors - Male/Female Pair PRT-10474		https://www.sparkfun.com/products/10474		
DESCRIPTION:		PAGE SIZE C		
DRAWN BY:	Paul Smith	SCALE:		5.00
DATE:	10 July 2013	UNITS:		inch [mm]
CAD APPLICATION: Creo Parametric 2.0		VER:		1.0
			SHEET 1 / 1	

4

3

2

1

X-ON Electronics

Largest Supplier of Electrical and Electronic Components

Click to view similar products for [SparkFun Accessories](#) category:

Click to view products by [SparkFun](#) manufacturer:

Other Similar products are found below :

[DEV-17119](#) [SEN-16474](#) [COM-11450](#) [BOB-00495](#) [BOB-00497](#) [PRT-08619](#) [PRT-12702](#) [SEN-13582](#) [TOL-11468](#) [ROB-09065](#) [COM-12999](#)
[COM-12986](#) [COM-11120](#) [ROB-11965](#) [COM-11222](#) [PRT-12845](#) [CAB-13685](#) [PRT-10210](#) [PRT-14490](#) [TOL-10603](#) [COM-09278](#) [PRT-08023](#)
[COM-08033](#) [DEV-14052](#) [PRT-00111](#) [PRT-08432](#) [TOL-09317](#) [TOL-10997](#) [PRT-00743](#) [PRT-14492](#) [TOL-14228](#) [COM-13247](#) [PRT-11026](#)
[CAB-10646](#) [TOL-08964](#) [PRT-00116](#) [PRT-08506](#) [CAB-09741](#) [COM-10800](#) [SEN-14282](#) [DEV-14012](#) [CAB-14043](#) [COM-14452](#) [TOL-14508](#)
[DEV-13814](#) [GPS-00574](#) [PRT-14417](#) [PRT-08231](#) [COM-09939](#) [PRT-13839](#)