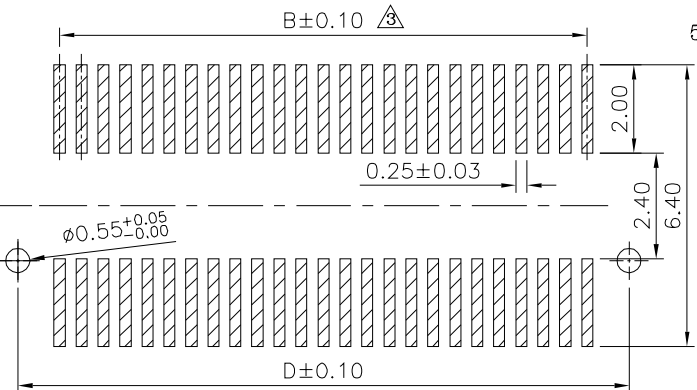
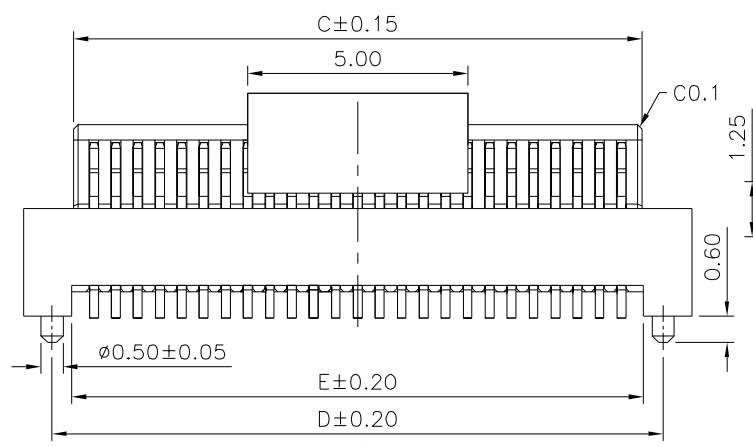
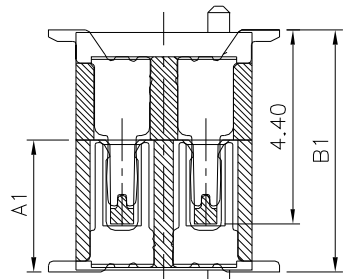
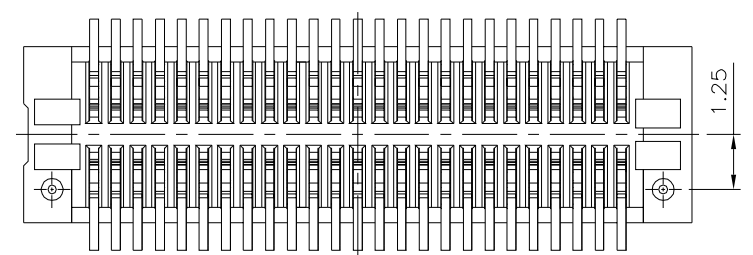


△ SPECIFICATION
1.General Characteristics:
 0.5mm Board To Board Double Slot Type Female XFP
 SMT 180° With Post Stacking Height=5.5/6.0mm
 With Cap
△ 2.Material&Finish:
△ 4 Housing:LCP(UL94V-0),White
△ 3 Contact:Phosphor Bronze,Gold Plated Over Nickel
3.Electrical Characteristics:
 Current Rating:0.5A AC/DC
 Voltage Rating:50V AC/DC
 Contact Resistance:30 Milliohms Max.
 Insulation Resistance:100 Megaohms Min. At 100V DC
 Withstanding Voltage:100V AC For One Minute
4.Environmental Characteristics:
 Operation Temperature Range:-20°C~+105°C
5.RoHS Compliant



△ Recommended P.C.B. Layout



Mating Draw (Ref.)

Pin	A	B	C	D	E
10	5.20	2.00	2.92	3.90	3.20
14	6.20	3.00	3.92	4.90	4.20
20	7.70	4.50	5.42	6.40	5.70
30	10.20	7.00	7.92	8.90	8.20
40	12.70	9.50	10.42	11.40	10.70
50	15.20	12.00	12.92	13.90	13.20
60	17.70	14.50	15.42	16.40	15.70
70	20.20	17.00	17.92	18.90	18.20
80	22.70	19.50	20.42	21.40	20.70
90	25.20	22.00	22.92	23.50	23.20
100	27.70	24.50	25.42	26.40	25.70
120	32.70	29.50	30.42	31.40	30.70

Part No.(Socket)	Part No.(Plug)	Dim. A1	Dim. B1
1660	1659	3.00	5.5
1660	1661	3.50	6.0

4UCON 元化興業股份有限公司
 4UCON TECHNOLOGY INC.

DRAWING No. △
19008
 SCALE NONE

APPROVED BY MEI
 CHECKED BY HZF
 DRAWING BY CYP
 REV. A4

UNLESS OTHERWISE SPECIFIED TOLERANCES ARE
 .X ±0.2
 .XX ±0.15
 ANG.
 UNIT mm

NO.	REV.	REVISIONS	CHK	DATE
△ 4	A4	Modify Data	HZF	10/10/2018
△ 3	A3	Modify Data	HZF	03/05/2014
△ 2	A2	Modify Data	HZF	10/18/2011
△ 1	A1	Modify Data	HZF	01/29/2010
△ 0	A0	NEW RELEASE	BECKY	03/01/2005

X-ON Electronics

Largest Supplier of Electrical and Electronic Components

Click to view similar products for [Board to Board & Mezzanine Connectors](#) category:

Click to view products by [SparkFun](#) manufacturer:

Other Similar products are found below :

[589158040000018](#) [MDF7C-18P-2.54DSA\(55\)](#) [FCN-230C068-11](#) [FCN-268F012-G/BD](#) [FCN-268F036-G/BD](#) [FCN-268M012-G/0D](#) [FCN-268M024-G/1D](#) [FCN-723J004/1](#) [MIS-048-01-F-D-DP-K](#) [832-10-034-10-001000](#) [FX4C-80S-1.27DSA](#) [FCN-214Q030-G/0](#) [FCN-234P048-G/0](#) [FCN-235D050-G/C](#) [210-93-314-41-105000](#) [2-22603-0](#) [MDF7-40DP-2.54DSA\(55\)](#) [AXG720047](#) [5031084030](#) [MIT-114-03-F-D-K](#) [55323-1519](#) [DF33-2P-3.3DSA\(24\)](#) [YFT-20-05-H-03-SB-K](#) [503308-3040](#) [026-6203-PDB](#) [027-6203-PDB](#) [069159702701000](#) [10123981-102LF](#) [101A10019X](#) [55650-0588-C](#) [68682-310LF](#) [68684-306](#) [75140-7012](#) [87471-650](#) [YTW-30-07-H-Q-410-140](#) [194261-1](#) [FCN-268F024-G0D](#) [10124054-515LF](#) [68685-603](#) [8-1616154-3](#) [MIS-019-01-F-D](#) [FCN-268M024-G/3D](#) [20021832-06016C1LF](#) [KX15-20KLDL-E1000E](#) [MDF7-16DP-2.54DSA\(55\)](#) [AXE810124](#) [FCN-214J100-G/0](#) [FCN-230C068-E/S](#) [AXE812124](#) [AXE816124](#)