

ELECTRET CONDENSER MICROPHONE

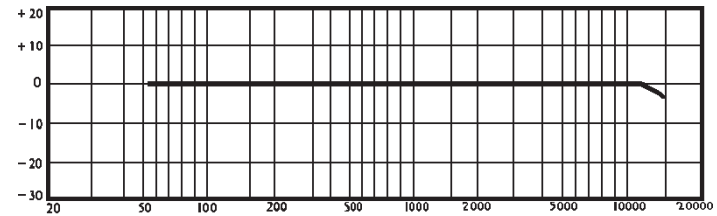
MEO-94P-01-Series

Omnidirectional & RoHS Compliant

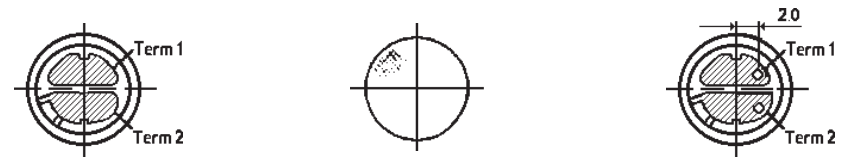
SPECIFICATIONS:

TYPE	MEO-94PD-01-Series MEO-94PN-01-Series
FREQUENCY RESPONSE (Hz)	20 ~ 16,000 Hz.
DIRECTIVITY	Omnidirectional
SENSITIVITY ($O_{dB}=1V/u\text{ bar}$)	- 64 (-643) - 62 (-623) - 60 (-603)
TOLERANCE	$\pm 3\text{dB}$
SENSITIVITY REDUCTION	Within -3.0dB@1.1V
S/N RATIO	More than 40 dB
OUTPUT IMPEDANCE	Low
MAX. OPER. VOLTAGE(VDC)	10 V
OPERATING VOLTAGE (VDC)	1.5 V
CURRENT CONSUMPTION (mA)	Max 0.3
DIMENSIONS (mm)	9.7 x 4.5
TERMINATION	PD = Pad PN = Pin

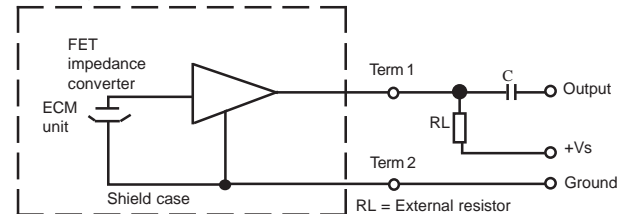
Typical Frequency Response Curve:



Dimensions:



Schematic Diagram:



$V_s=3.0V$, $R_L = 2.2k\text{ ohm}$

INTERVOX
International ©

International Components Corporation

175 Marcus Blvd., Hauppauge, NY 11788 631-952-9595 FAX 631-952-9597 www.icc107.com

Title:

Electret Condenser Microphone

Intervox Model #

MEO-94P-01-Series

Rev.

Scale:

Date: 06/01/2007

Sheet 1 of 1

X-ON Electronics

Largest Supplier of Electrical and Electronic Components

Click to view similar products for [Audio IC Development Tools](#) category:

Click to view products by [SparkFun](#) manufacturer:

Other Similar products are found below :

[LM4906MMBD](#) [LM4935RLEVAL](#) [LME49710NABD](#) [LME49740MABD](#) [LME49740NABD](#) [LME49860MABD](#) [LME49870MABD](#) [EVAL-AD1940AZ](#) [EVAL-ADAU1401AEBZ](#) [SRC4382EVM-PDK](#) [TLV320AIC36EVM-K](#) [TPA5052EVM](#) [TPA6136A2YFFEVM](#) [LM4562HABD](#) [LM4906LDBD](#) [LM4923LQBD](#) [LM4992SDBD](#) [LME49710MABD](#) [LME49713MABD](#) [LME49860NABD](#) [MAX98300EVKIT+WLP](#) [MAX9738EVKIT+](#) [MAX98358EVSYS#WLP](#) [MAX9723DEVKIT+](#) [EVAL-ADAV803EBZ](#) [MAX9709EVKIT](#) [LM4809MBD](#) [LM4674TLBD](#) [CDBWM8725-M-1](#) [CDBWM8533-M-1](#) [EV_ICS-40740-FX](#) [SDCK3](#) [PIM524](#) [DEV-17737](#) [MAX9850EVCMOD2#](#) [EVALAHNBIM69D130V01TOBO1](#) [EV78Y10A](#) [1063](#) [TAS5756MDCAEVM](#) [TLV320ADC3101EVM-K](#) [TLV320AIC3007EVM-K](#) [TLV320AIC3105EVM-K](#) [TLV320AIC3253EVM-K](#) [TPA2016D2EVM](#) [TPA2035D1EVM](#) [TPA2051D3YFFEVM](#) [TPA3107D2EVM](#) [TPA6120A2EVM](#) [TPA6132A2EVM2](#) [MIKROE-2454](#)