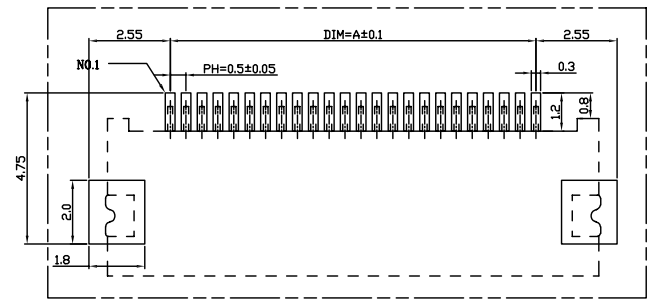
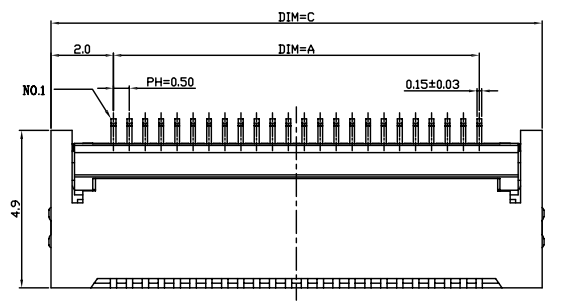
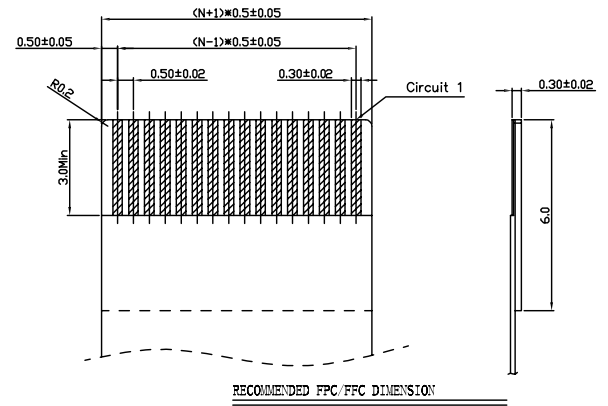
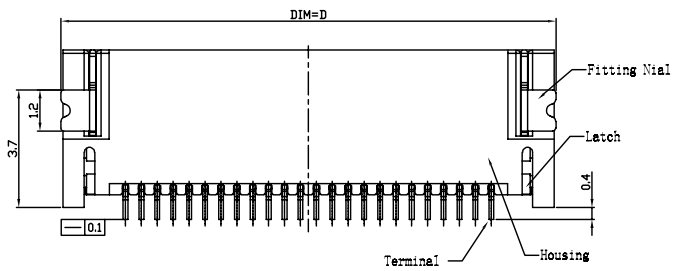
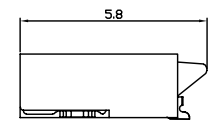
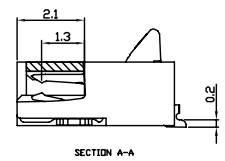
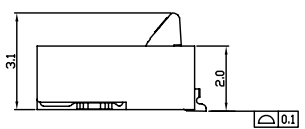
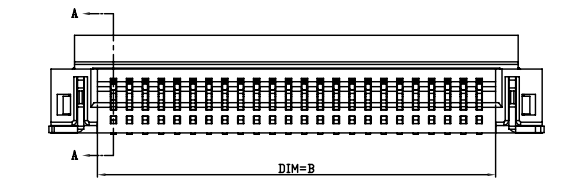


REV.	DATE	ECN NO.	MODIFICATION	APPROVER
A	2014/07/07	/	NEW	Vicky



RECOMMENDED P.C.B PATTERN LAYOUT
REFERENCE TOLERANCE:±0.05



RECOMMENDED FPC/FPC DIMENSION

PIN NO.	A	B	C	D
4	1.5	2.60	5.50	5.70
5	2.0	3.10	6.00	6.20
6	2.5	3.60	6.50	6.70
7	3.0	4.10	7.00	7.20
8	3.5	4.60	7.50	7.70
9	4.0	5.10	8.00	8.20
10	4.5	5.60	8.50	8.70
11	5.0	6.10	9.00	9.20
12	5.5	6.60	9.50	9.70
13	6.0	7.10	10.00	10.20
14	6.5	7.60	10.50	10.70
15	7.0	8.10	11.00	11.20
16	7.5	8.60	11.50	11.70
17	8.0	9.10	12.00	12.20
18	8.5	9.60	12.50	12.70
19	9.0	10.10	13.00	13.20
20	9.5	10.60	13.50	13.70
21	10.0	11.10	14.00	14.20
22	10.5	11.60	14.50	14.70
23	11.0	12.10	15.00	15.20
24	11.5	12.60	15.50	15.70
25	12.0	13.10	16.00	16.20
26	12.5	13.60	16.50	16.70
27	13.0	14.10	17.00	17.20
28	13.5	14.60	17.50	17.70
29	14.0	15.10	18.00	18.20
30	14.5	15.60	18.50	18.70
31	15.0	16.10	19.00	19.20
32	15.5	16.60	19.50	19.70
33	16.0	17.10	20.00	20.20
34	16.5	17.60	20.50	20.70
35	17.0	18.10	21.00	21.20
36	17.5	18.60	21.50	21.70
37	18.0	19.10	22.00	22.20
38	18.5	19.60	22.50	22.70
39	19.0	20.10	23.00	23.20
40	19.5	20.60	23.50	23.70
41	20.0	21.10	24.00	24.20
42	20.5	21.60	24.50	24.70
43	21.0	22.10	25.00	25.20
44	21.5	22.60	25.50	25.70
45	22.0	23.10	26.00	26.20
46	22.5	23.60	26.50	26.70
47	23.0	24.10	27.00	27.20
48	23.5	24.60	27.50	27.70
49	24.0	25.10	28.00	28.20
50	24.5	25.60	28.50	28.70
51	25.0	26.10	29.00	29.20
52	25.5	26.60	29.50	29.70
53	26.0	27.10	30.00	30.20
54	26.5	27.60	30.50	30.70
55	27.0	28.10	31.00	31.20
56	27.5	28.60	31.50	31.70
57	28.0	29.10	32.00	32.20
58	28.5	29.60	32.50	32.70
59	29.0	30.10	33.00	33.20
60	29.5	30.60	33.50	33.70

SPECIFICATION:

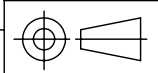
MATERIALS:

- Housing: Thermoplastic,UL94V-0,color:Natural.
- Actuator: Thermoplastic,UL94V-0,color:black.
- Contacts: copper alloy,Gold or Tin plated on Nickel overall.
- Fitting nail: copper alloy,Tin plated on Nickel overall.

PERFORMANCE:

- Rating current:0.5A;
- Rating voltage: 50V, AC/DC;
- Contact Resistance:30mΩ max;
- Insulation Resistance:500MΩ min;
- Withstand voltage: 500V, AC/minute;
- Temperature range: -45°C~+85°C.

GENERAL TOLERANCE		UNITS	NAME:	FPC	
SELECT	✓	mm	PART NO:	FPC050**-17***	
TOL.	1 2 3	MAT'L	APPD:	*	
X.XXX	±0.05±0.15	FINISH	CHKD:	Vicky	
X.XX	±0.10 ±0.13 ±0.25	Q'TY	DR:	Jillian	
X.X	±0.20 ±0.25 ±0.50				
X.	±0.38 ±1.00				
ANGLE	±2'				
			TITLE: FPC0.5mm XP SMT 前插后压 H=2.0mm (Customer drawing)		
			DWG NO. ATOM-A03920		
			SCALE		SHEET
			1:1		1/1
			REV		A



X-ON Electronics

Largest Supplier of Electrical and Electronic Components

Click to view similar products for [SparkFun Accessories](#) category:

Click to view products by [SparkFun](#) manufacturer:

Other Similar products are found below :

[DEV-17119](#) [SEN-16474](#) [COM-11450](#) [BOB-00495](#) [BOB-00497](#) [PRT-08619](#) [PRT-12702](#) [SEN-13582](#) [TOL-11468](#) [ROB-09065](#) [COM-12999](#)
[COM-12986](#) [COM-11120](#) [ROB-11965](#) [COM-11222](#) [PRT-12845](#) [CAB-13685](#) [PRT-10210](#) [PRT-14490](#) [TOL-10603](#) [COM-09278](#) [PRT-08023](#)
[COM-08033](#) [DEV-14052](#) [PRT-00111](#) [PRT-08432](#) [TOL-09317](#) [TOL-10997](#) [PRT-00743](#) [PRT-14492](#) [TOL-14228](#) [COM-13247](#) [PRT-11026](#)
[CAB-10646](#) [TOL-08964](#) [PRT-00116](#) [PRT-08506](#) [CAB-09741](#) [COM-10800](#) [SEN-14282](#) [DEV-14012](#) [CAB-14043](#) [COM-14452](#) [TOL-14508](#)
[DEV-13814](#) [GPS-00574](#) [PRT-14417](#) [PRT-08231](#) [COM-09939](#) [PRT-13839](#)