

OpenMV WiFi Shield.

1 Features

- Certified WiFi module.
- IEEE 802.11 b/g/n up to 72Mbps
- Station mode and Soft-AP support.
- Supports IEEE 802.11 WEP/WPA2 security.
- Network protocols (DHCP/DNS)
- Secure TLS stack.
- Integrated PCB antenna.

2 Description

The WiFi Shield enables OpenMV cameras to connect to the Internet. It features an ATWINC1500 FCC Certified WiFi module which can transmit data at up to 72Mbps making it perfect for streaming video. OpenMV firmware has built-in support for controlling the WiFi Shield using the network module.

Device Information

PART NUMBER	BODY SIZE (NOM)
OPENMV-WIFI-SHIELD	1.40 in x 1.05 in

3 Applications

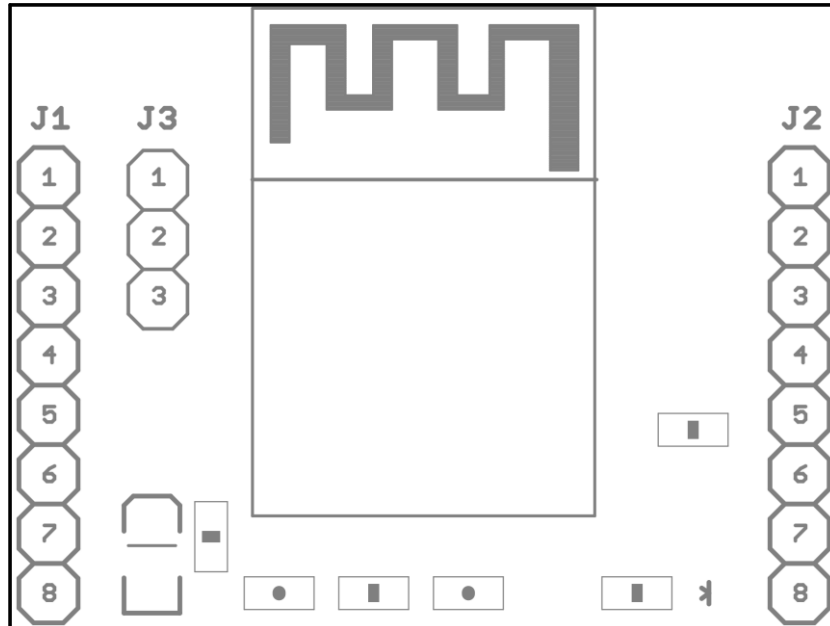
- MJPEG Streaming.
- Wireless programming.



Table of Contents

1	FEATURES	1
2	DESCRIPTION	1
3	APPLICATIONS	1
4	PIN CONFIGURATIONS AND FUNCTIONS.....	3
5	ELECTRICAL CHARACTERISTICS.....	4
5.1	RECOMMENDED OPERATING CONDITIONS.....	4
6	MECHANICAL INFORMATION.....	5

4 Pin Configurations and Functions



Pin Functions

Pin			Description
Header	No	Name	
J1 Pin Configuration			
J1	1	P0	SPI MOSI
	2	P1	SPI MISO
	3	P2	SPI SCLK
	4	P3	SPI SS
	5	P4	NC
	6	P5	NC
	7	P6	Chip Enable
	8	3.3	3.3v input
J2 Pin Configuration			
J2	1	RST	NC
	2	BOOT	NC
	3	SYN	NC
	4	P9	NC
	5	P8	IRQ
	6	P7	RESET
	7	VIN	NC
	8	GND	GND
J3 Pin Configuration			
J3	1	GND	GND
	2	RXD	Debug UART RX
	3	TXD	Debug UART TX

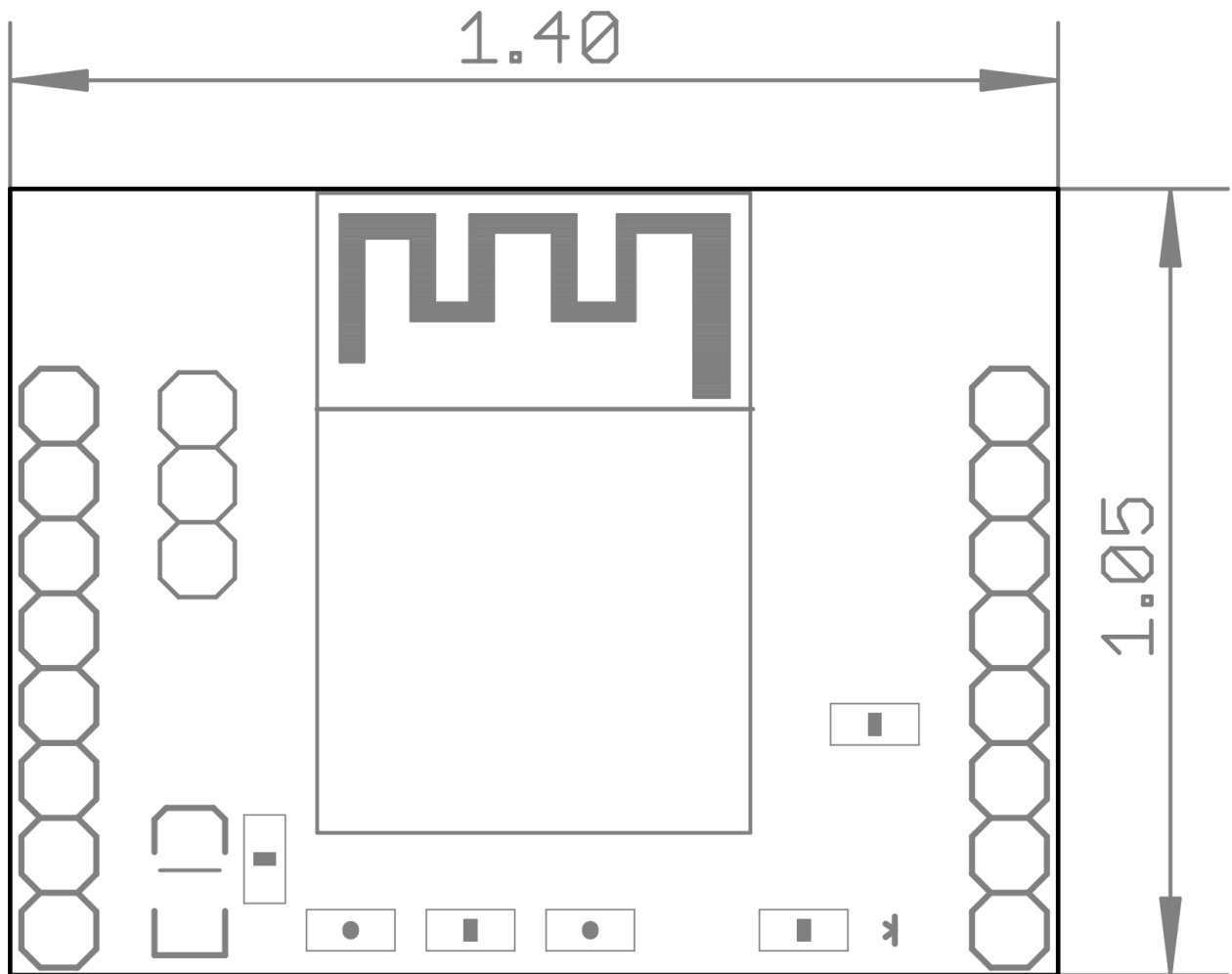
5 Electrical Characteristics

5.1 Recommended Operating Conditions

SYMBOL	RATINGS	MIN	MAX	UNIT
V_{IN}	External input supply voltage range.	3.0	3.6	V
I_{OUT}	External output supply current range.		500	mA
T	Operating Temperature	-40	85	°C

6 Mechanical Information

The following information is the most current data available for the designated device. This data is subject to change without notice and without revision of this document.



UNITS: Inches

X-ON Electronics

Largest Supplier of Electrical and Electronic Components

Click to view similar products for [WiFi Development Tools - 802.11 category](#):

Click to view products by [SparkFun manufacturer](#):

Other Similar products are found below :

[YSAEWIFI-1](#) [SKY65981-11EK1](#) [QPF7221PCK-01](#) [SIMSA915C-Cloud-DKL](#) [SIMSA433C-Cloud-DKL](#) [ISM43903-R48-EVB-E](#)
[QPF4206BEVB01](#) [RN-G2SDK](#) [SKY85734-11EK1](#) [SKY85735-11EK1](#) [ENW49D01AZKF](#) [ESP-LAUNCHER](#) [MIKROE-2336](#)
[EVAL_PAN1760EMK](#) [3210](#) [EVAL_PAN1026EMK](#) [ATWINC1500-XPRO](#) [2471](#) [DM990001](#) [WRL-13711](#) [2999](#) [ATWILC3000-SHLD](#)
[DFR0321](#) [TEL0118](#) [3213](#) [DFR0489](#) [WRL-13804](#) [DEV-13907](#) [UP-3GHAT-A20-0001](#) [3405](#) [TEL0078](#) [2680](#) [2702](#) [2821](#) [3044](#) [3606](#) [3653](#)
[4000](#) [4172](#) [4178](#) [4201](#) [4285](#) [4289](#) [CS-ANAVI-25](#) [CS-ANAVI-26](#) [CS-ANAVI-23](#) [CS-ANAVI-24](#) [CS-ANAVI-28](#) [CS-ANAVI-29](#) [CS-](#)
[ANAVI-30](#)