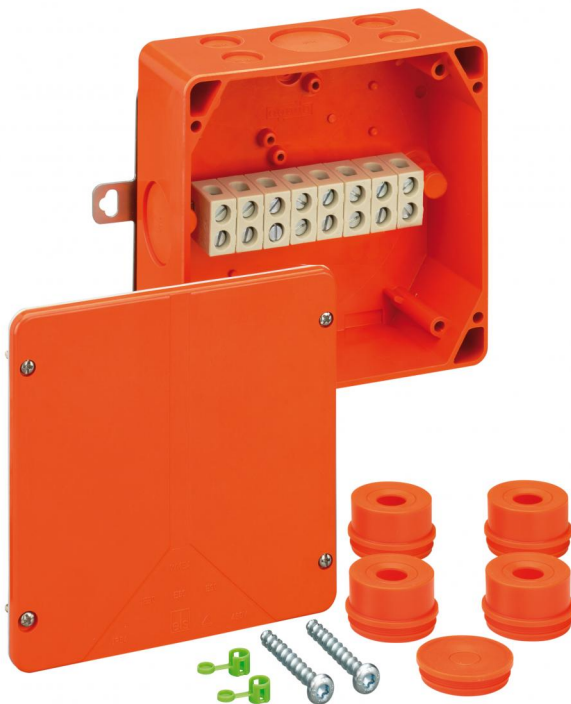


Cable junction box

## WKE 4 - 8 x 6<sup>2</sup>

This product is outdated. To the successor product: <https://www.spelsberg.com/p/86850801>



## WKE 4 - 8 x 6<sup>2</sup>

Cable junction box

CUSTOMIZABLE

Productnumber: 86051401

Dimensions: 165 x 165 x 76 mm

Junction box with IP54 / IP65 certified as per EN 60670, with electrical functional integrity E30 - E90 acc. to DIN 4102-12, halogen-free enclosure made from special duroplastic, terminals made from high temperature-proof special ceramics, rapid mounting thanks to external fixing brackets and wall + ceiling fastening parts kit D6. Accessories supplied: 2 off IP54 double end connectors M40, 2 off IP54 attachment bushes M40, sealing area 17 - 30 mm, sealing area 8 - 13 mm, 1 off IP54 sealing plug M20, sealing area 8 - 13.5 mm, 1 off IP54 sealing plug M40, sealing area 17 - 30 mm, Drilling template, D6 wall + ceiling attachment set

**Connection box 8-pole 0.5 - 6 mm<sup>2</sup>, number of conductors per pole: 8 x 0.5<sup>2</sup> / 4 x 0.75<sup>2</sup> / 6 x 1<sup>2</sup> / 6 x 1.5<sup>2</sup> / 2 x 2.5<sup>2</sup> / 2 x 4<sup>2</sup> / 2 x 6<sup>2</sup>**



## Technical Data

### electrical characteristics

Protection type UL:	not specified
Rated insulation voltage AC:	450 V
Rated insulation voltage DC:	450 V
Type of protection:	IP54/IP65
Circuit integrity class:	E90
Max. conductor cross section:	6 mm <sup>2</sup>
Protection class:	II

## Colours

Base unit colour:	orange
Cover colour:	orange

## Dimensions

Width:	165 mm
Length:	165 mm
Height:	76 mm

## Material characteristics

suitable for exterior use:	yes
Halogen free:	yes
Industry quality:	no

## mechanical properties

Type of fastening:	Wall/ceiling mounting
Sealable:	no
Cover screw torque:	1.8 Nm

## Ambient conditions

max. relative humidity 25°C:	95 %
max. relative humidity 40°C:	50 %
Min. ambient temperature:	-25 °C
Max. ambient temperature:	40 °C
24h ambient temperature:	35 °C

## Material

Base unit material:	Duroplast
Cover material:	Duroplast
Sealing material:	Thermoplastic elastomer
Cover screw material:	Stainless steel V2A

## Certificates

Test mark:	VDE (DIN EN 60670-1/-22 (VDE 0606-1/-22))
------------	---

## Accessories

---

KVR M20-MGM/or - Cable gland

---

KVR M25-MGM/or - Cable gland

---

KVR M32-MGM/or - Cable gland

---

KVR M40-MGM/or - Cable gland

---

AST M20/or - Attachment bushes

---

AST M25/or - Attachment bushes

---

AST M32/or - Attachment bushes

---

AST M40/or - Attachment bushes

---

VST M20/or - Sealing plugs

---

VST M25/or - Sealing plugs

---

VST M32/or - Sealing plugs

---

VST M40/or - Sealing plugs

---

## X-ON Electronics

Largest Supplier of Electrical and Electronic Components

*Click to view similar products for [Electrical Enclosures](#) category:*

*Click to view products by [Spelsberg](#) manufacturer:*

Other Similar products are found below :

[1201110001](#) [120-401](#) [120-905](#) [120-909](#) [120-403](#) [130-004](#) [MR-25L+](#) [30-8739](#) [PIP-11774SCREW](#) [30-9715](#) [30-9777-BU](#) [110-902](#) [110-901](#)  
[A16N12BLP](#) [110-406](#) [110-401](#) [110-404](#) [120-405](#) [34861601](#) [106-009](#) [106-505](#) [105-405](#) [111-005](#) [127-909](#) [106-502](#) [130-475](#) [130-503](#) [127-](#)  
[455](#) [9511150](#) [9511017](#) [9820011](#) [NSYTDB5PL](#) [137-455](#) [130-001](#) [105-904](#) [120-404](#) [137-005](#) [130-505](#) [127-406](#) [AB 1,5.0](#) [AB2.0](#) [ABM.0](#)  
[73345601](#) [F-MP](#) [H-MP](#) [M-MP](#) [PAT 12040](#) [2461000](#) [9121230](#) [79541301](#)