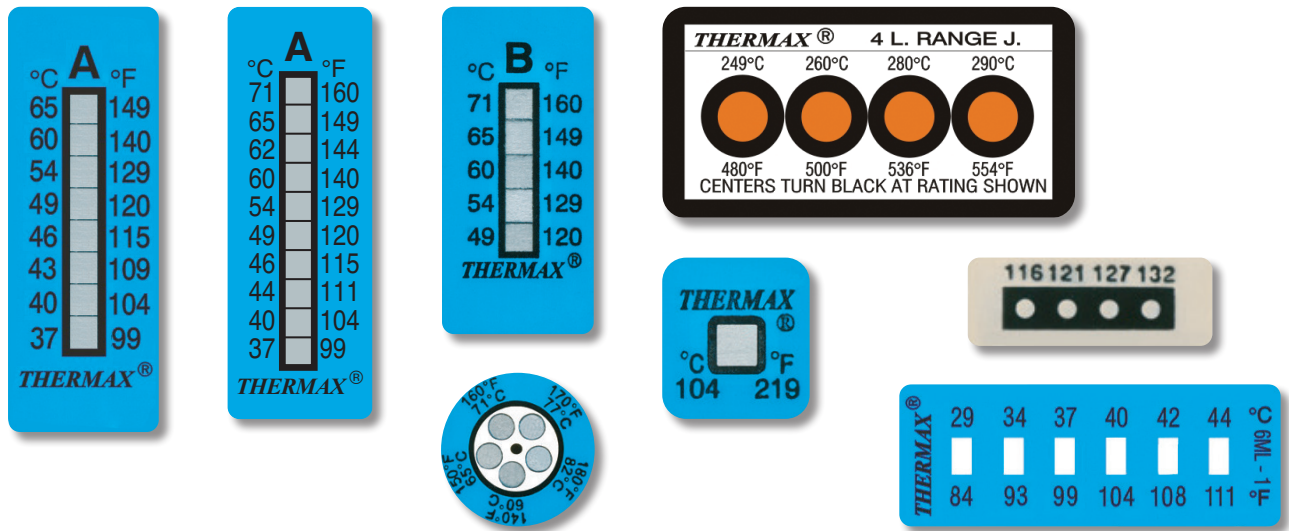


Thermax[®] Temperature Indicators

Thermax irreversible temperature indicators are a simple, cost-effective temperature monitoring program based on proprietary color change technologies.

Irreversible temperature indicators provide a permanent record that an item has reached or exceeded its rated temperature. They can be used in most applications where temperature is a concern.

These self-adhesive labels consist of a series of temperature-sensitive elements sealed between heat-resistant substrates with transparent windows. Each element changes color distinctly as its rated temperature is exceeded. The changes are irreversible, providing a temperature history of the surface being monitored. The labels will not de-laminate when removed for reference and can be attached to an inspection report to serve as a permanent record.



Features

- Clear color change shows maximum temperature experienced
- Permanent record of highest temperature
- Immediate response to temperature
- Cost effective temperature monitoring solution
- Oil, water, and steam resistant

Benefits

- Easy to read - Distinct color change when temperature been exceeded (Clear to BLACK).
- Easy to use – Product arrives ready to use. No pre-activation required.
- Easy to implement – Solutions available for low volume scenarios or for high volume manufacturing lines.

Thermax[®] Temperature Indicators

Key Specifications

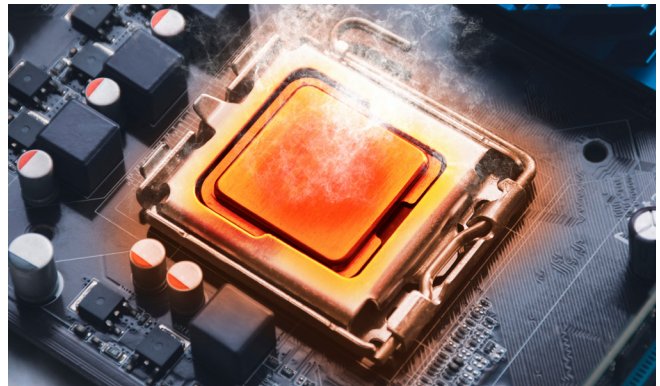
Temperature Range	29 - 290°C
Accuracy	±1°C / ±2°F (29 – 99°C range) ±1.5°C / ±3°F (100-154°C range) ± 1% +1°C / ± 1% ±2°F (160-290°C range)
Visual Indication	Clear to Black
Mounting	Self Adhesive
Storage Requirements	Store in a cool dry space, below lowest temperature level

Application Examples:

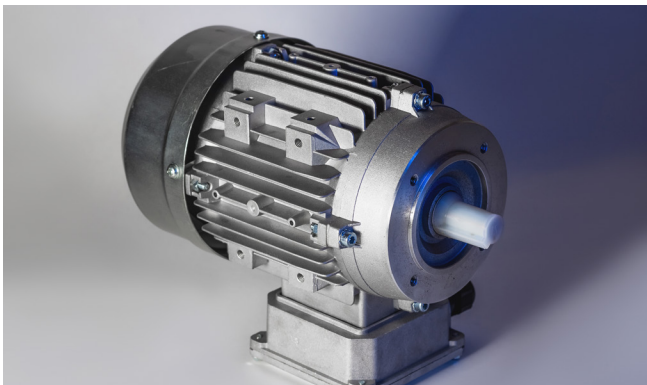
Proof of Drying, Curing & Bonding – confirmation that appropriate temperatures have been reached



Warranty Claims – indication of equipment overheating



Preventative Maintenance – monitoring of machine components

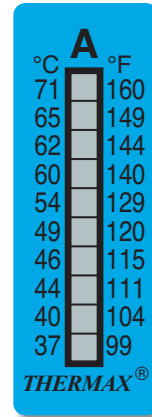


Process Validation – verification that in-process temperatures have been achieved



Thermax[®] Temperature Indicators

A	°F	99	104	111	115	120	129	140	144	149	160
	°C	37	40	44	46	49	54	60	62	65	71
B	°F	171	180	190	199	210	219	230	241	250	261
	°C	77	82	88	93	99	104	110	116	121	127
C	°F	270	280	289	300	309	320	331	340	351	360
	°C	132	138	143	149	154	160	166	171	177	182
D	°F	370	379	390	399	410	421	435	450	466	480
	°C	188	193	199	204	210	216	224	232	241	249



10 LEVEL SPECIFICATIONS

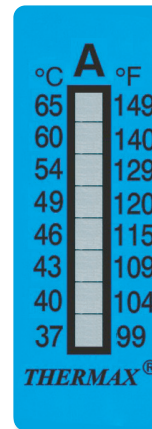
Size: 2.00" x 0.7" (51x18mm)

Scale: °F and °C

Type: Vertical, Self Adhesive

Units/Packs: 10

A	°F	99	104	109	115	120	129	140	149	
	°C	37	40	43	46	49	54	60	65	
B	°F	160	171	180	190	199	210	219	230	
	°C	71	77	82	88	93	99	104	110	
C	°F	241	250	261	270	280	289	300	309	
	°C	116	121	127	132	138	143	149	154	
D	°F	320	331	340	351	360	370	379	390	
	°C	160	166	171	177	182	188	193	199	
E	°F	399	410	421	435	450	466	480	489	500
	°C	204	210	216	224	232	241	249	254	260



8 LEVEL SPECIFICATIONS

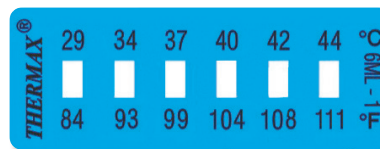
Size: 2.00" x 0.7" (51x18mm)

Scale: °F and °C

Type: Vertical, Self Adhesive

Units/Packs: 10

1	°F	84	93	99	104	108	111
	°C	29	34	37	40	42	44
2	°F	111	115	120	129	140	144
	°C	44	46	49	54	60	62
3	°F	149	160	171	180	190	199
	°C	65	71	77	82	88	93
4	°F	210	219	230	241	250	261
	°C	99	104	110	116	121	127
5	°F	270	280	289	300	309	320
	°C	132	138	143	149	154	160
6	°F	331	340	351	360	370	379
	°C	166	171	177	182	188	193
7	°F	390	399	410	421	435	450
	°C	199	204	210	216	224	232
8	°F	466	480	489	500	536	554
	°C	241	249	254	260	280	290



6 LEVEL SPECIFICATIONS

Size: .47" x 1.26" (12x32mm)

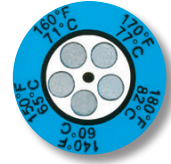
Scale: °F and °C

Type: Horizontal, Self Adhesive

Units/Packs: 10

Thermax[®] Temperature Indicators

1	°F	105	110	115	120	130
	°C	40	43	46	49	54
2	°F	140	150	160	170	180
	°C	60	65	71	77	82
3	°F	190	200	210	220	230
	°C	88	93	99	104	110
4	°F	240	250	260	270	280
	°C	116	121	127	132	138
5	°F	290	300	310	320	330
	°C	143	149	154	160	166
6	°F	340	350	360	370	380
	°C	171	177	182	188	193
7	°F	390	400	410	420	435
	°C	199	204	210	216	224
8	°F	450	465	480	490	500
	°C	232	241	249	254	260



5 LEVEL

CLOCK SPECIFICATIONS

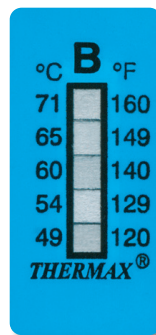
Size: 0.55" Dia. (14mm)

Type: Circular, Self Adhesive

Scale: °F and °C

Units/Packs: 10

A	°F	99	104	109	115	120
	°C	37	40	43	46	49
B	°F	120	129	140	149	160
	°C	49	54	60	65	71
C	°F	171	180	190	199	210
	°C	77	82	88	93	99
D	°F	219	230	241	250	261
	°C	104	110	116	121	127
E	°F	270	280	289	300	309
	°C	132	138	143	149	154
F	°F	320	331	340	351	360
	°C	160	166	171	177	182
G	°F	370	379	390	399	410
	°C	188	193	199	204	210
H	°F	421	435	450	466	480
	°C	216	224	232	241	249
I	°F	480	489	500	536	554
	°C	249	254	260	280	290



5 LEVEL SPECIFICATIONS

Size: 2.00" x 0.7" (51x18mm)

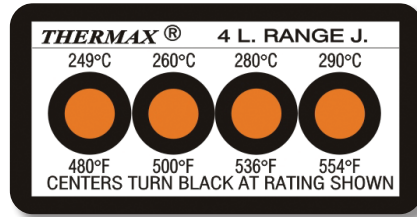
Scale: °F and °C

Type: Vertical, Self Adhesive

Units/Packs: 10

Thermax[®] Temperature Indicators

A	°F	99	111	120	129
	°C	37	44	49	54
D	°F	219	230	241	250
	°C	104	110	116	121
E	°F	261	270	280	289
	°C	127	132	138	143
F	°F	300	309	320	331
	°C	149	154	160	166



4 LEVEL SPECIFICATIONS

Size: 0.91" x 1.77" (23x45mm)
 Type: Horizontal, Self Adhesive
 Scale: °F and °C
 Units/Packs: 10

2	°F	120	130	140	150
	°C	49	54	60	65
4	°F	200	210	220	230
	°C	93	99	104	110
5	°F	240	250	260	270
	°C	116	121	127	132
7	°F	320	330	340	350
	°C	160	166	171	177
8	°F	360	370	380	390
	°C	182	188	193	199
9	°F	400	410	420	435
	°C	204	210	216	224



4 LEVEL MICRO SPECIFICATIONS

Size: 0.15" x 0.43" (4x11mm)
 Type: Horizontal, Self Adhesive
 Scale: °F or °C
 Units/Packs: 10

°F	93	99	104	109	115	120	129	140
°C	34	37	40	43	46	49	54	60
°F	149	160	171	180	199	219	241	261
°C	65	71	77	82	93	104	116	127
°F	280	300	320	340	360	380	399	421
°C	138	149	160	171	182	193	204	216
°F	450	480	500	536	554			
°C	232	249	260	280	290			



ENCAPSULATED SPECIFICATIONS

Size: 0.47" x 0.51" (12x13mm)
 Scale: °F and °C
 Units/Packs: 50
 Type: Single temperature indicator shows when maximum temperature has been achieved. Self adhesive.

X-ON Electronics

Largest Supplier of Electrical and Electronic Components

Click to view similar products for [SpotSee](#) manufacturer:

Other Similar products are found below :

[20300](#) [22408](#) [22410](#) [22423](#) [22434](#) [24101](#) [24114](#) [26102](#) [26107](#) [26107ML](#) [26107ML#2](#) [26119](#) [26123](#) [26124](#) [26126](#) [32100](#) [32200](#) [32701](#)
[32905](#) [33030](#) [33247](#) [33255](#) [33265](#) [35MC/75G](#) [40610](#) [45000K](#) [46000K](#) [47000K](#) [49000K](#) [50000K](#) [51000K](#) [CM 0/32](#) [CM 10/50](#) [CM 2/36](#)
[CM 5/41](#) [GV12540](#) [L-3100](#) [L-3133](#) [L-3210](#) [L-3230](#) [L-3300](#) [M21A-3G-VV](#) [MG2212-A](#) [MG2213](#) [OW298](#) [OW298K](#) [OW298PWR](#)
[RD298HPTX2](#) [SL298Cell](#) [SL31740](#)