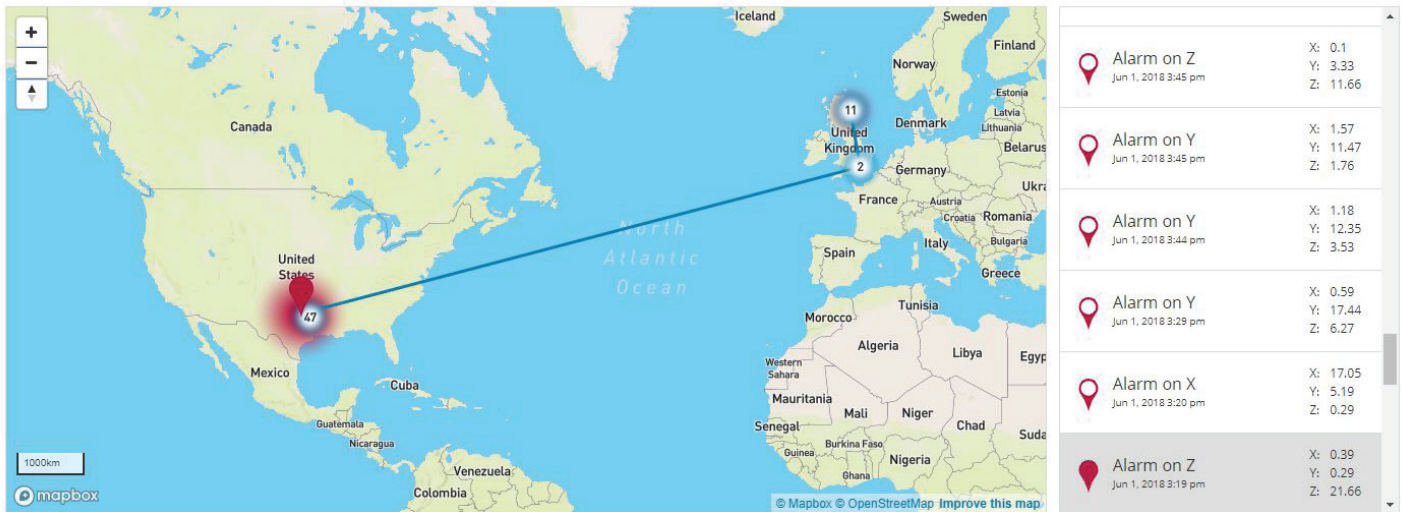


# SpotBot Cellular Data Sheet

## FUNCTIONAL

- Impact and temperature detection with real-time alerts of conditions outside the user defined thresholds
- Alerts via cellular communication with impact date stamp, location and temperature
- Location information and event summaries communicated from 1 to 24 hour intervals (user defined)
- Global cellular coverage via dedicated network
- Secure cloud platform
- Dashboard with unit's impact and temperature information, as well as location
- Power save mode in low connectivity/low battery situations to extend battery life



Click to toggle items shown: Alarm Summary Lines

Unit Start Time	Unit Stop Time	Unit Reset Time	Largest Event Modulus	Largest Event	Alarm Count	Summary Frequency	Time Since Last Message	Battery Level	Scale Range
Thu, May 3, 2018 3:55 PM	Mon, Jan 22, 2018 3:31 PM	Mon, Jan 22, 2018 9:16 AM	29.43	28.22	222	1/hour	4 days, 4 hours, 33 minutes	24%	-

## OPERATING SPECIFICATIONS

**Impact Monitoring:** 3-axis detection

**Impact Accuracy:** Accurate up to 65G with ± 10% variance

Impact	Full Range Accuracy	Alarm Setting
65G to 30G	3%	30G
30G to 10G	7%	10G
10G to 4G	9%	4G

**Duration of Impact:** 10 to 18ms

**Bandwidth:** 100Hz

**Temperature Monitoring:** Internal temperature sensor

**Temperature Accuracy:**

±2°C (-25°C to 85°C)

±3°C (-40°C to -25°C)

**Operating Temperature Range:**

-40°C to 85°C

-40°F to 185°F

# SpotBot Cellular Data Sheet

## BATTERY LIFE:

**Battery Type:** 1.5V AA Batteries

Lithium cells required for long battery life or low temp operation

1 (summary / event) per day	Up to 190 Days	Normal cellular coverage
1 (summary / event) per hour	Up to 80 Days	(Lithium batteries)

## CASE SPECIFICATIONS

- USB 2.0 connector
- **Dimensions:** W\*L\*H = 7.000" x 5.250" x 1.375"  
= 17.78 x 13.335 x 3.5 cm
- **Weight:** 1.304 lbs = 590 gr with batteries  
1.104 lbs = 500 gr without batteries
- IP 67 Rated

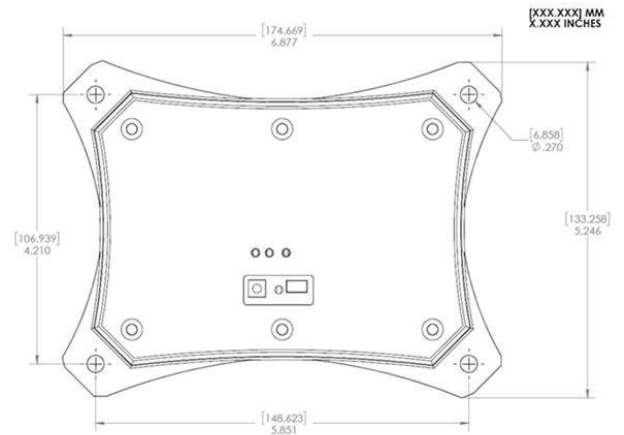
## MOUNTING OPTIONS

- Screw mount
- Magnet feet (optional)
- Adhesive Pads (optional)

## GLOBAL CELLULAR RADIO

Global cellular 3G connectivity (internal SIM), 2G fall back

<b>Bands</b>	UMTS 800/850/900/AWS/1900/2100
	GSM 850/900/1800/1900
<b>Global Approvals</b>	FCC, CE, IC, Anatel, CMIIT, Giteki, NOM/NYCE approved GCF, PTCRB, KC
	US, EU, Canada, Japan, China, Mexico, Brazil, India, Australia, South Korea
	Please inquire for additional country certification status



## X-ON Electronics

Largest Supplier of Electrical and Electronic Components

*Click to view similar products for [Data Logging & Acquisition](#) category:*

*Click to view products by [SpotSee](#) manufacturer:*

Other Similar products are found below :

[PCI-6208A](#) [DAQe-2502](#) [ACL-8112DG](#) [SpotBotBLE](#) [MCM-204](#) [DAQM909A](#) [ACL-7130](#) [PXES-2780](#) [Rack-Mount kit](#) [USB-4761-BE](#)  
[SE028](#) [USB-4702-AE](#) [USB-4704-AE](#) [USB-4716-AE](#) [USB-4750-BE](#) [USB-4751-AE](#) [USB-4751L-AE](#) [PCI-1710UL-DE](#) [PCI-1710U-DE](#) [PCI-1710HGU-DE](#) [AR207/8/S1/PPPP/IP30](#) [U2781A](#) [4610](#) [EL-USB-5](#) [AR207/8/S2/PPPP/IP30](#) [ACL-8112PG](#) [cPCI-7248](#) [cPCI-7433](#) [DAQ-2204](#)  
[DAQ-2208](#) [ND-6024](#) [ND-6053](#) [ND-6060](#) [ND-6063](#) [PCI-7230](#) [PCI-7432](#) [PCI-7442](#) [PCI-9112](#) [PCI-9112A](#) [PCI-9113A](#) [PCI-9221](#) [PCM-7248+](#) [USB-1902](#) [USB-1903](#) [USB-2401](#) [MIC-1810-U0A1E](#) [PCIE-1802L-AE](#) [PCIE-1813-AE](#) [USB-5862-AE](#) [DAS50](#) [DAS30](#)