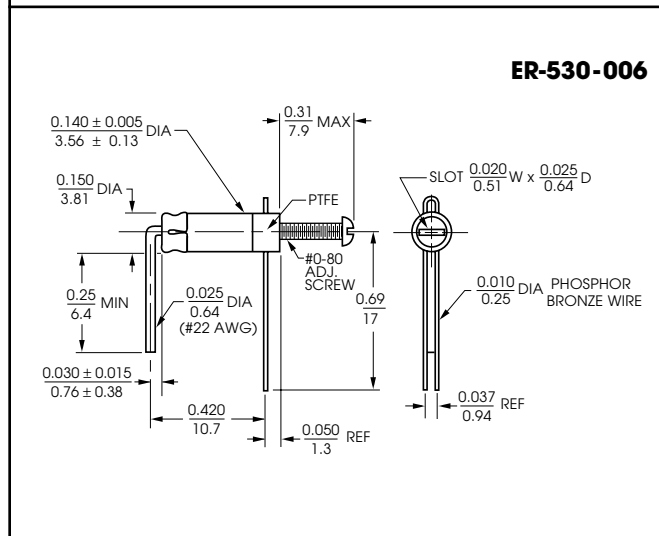
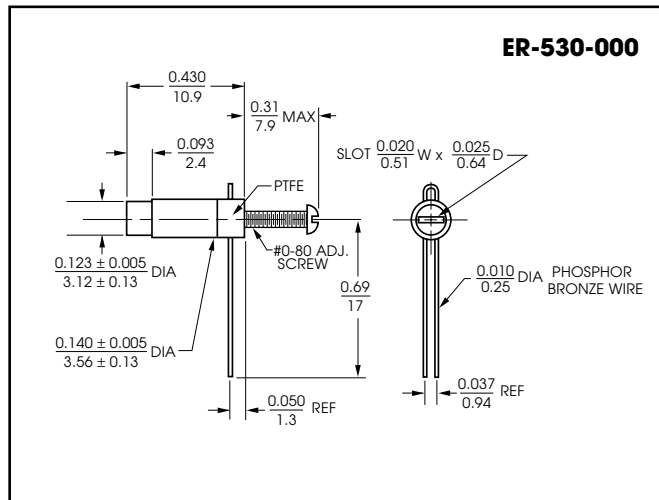
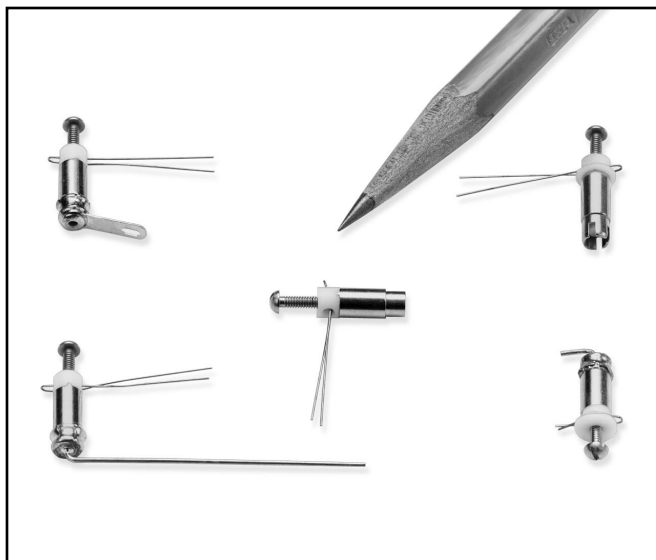


MULTITURN PTFE DIELECTRIC TRIMMER CAPACITORS



FEATURES

These trimmer capacitors combine the outstanding electrical properties of PTFE with nonferrous metal parts to provide:

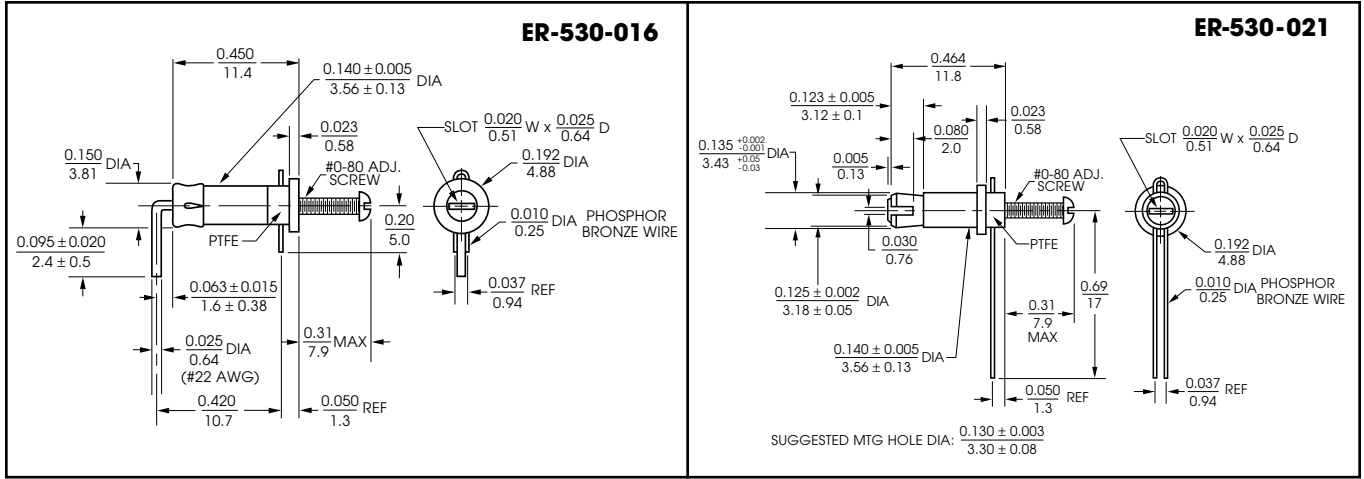
- High Q
- High DWV
- High IR
- Excellent Conductivity
- Corrosion Resistance
- Low ΔC /Turn Ratio
- Excellent Stability

SPECIFICATIONS

Capacitance Range	0.25 to 1.5 pF
Rated Voltage at 25°C:	
ER-530-000, -006, -016	1250 VDC
ER-530-021	1700 VDC
Dielectric Withstanding Voltage at 25°C:	
ER-530-000, -006, -016	2500 VDC
ER-530-021	3400 VDC
Operating Temperature Range	-55° to +125°C
Q min at 1 MHz	2000
Insulation Resistance	1 teraohm at 25°C
TCC	50 ± 50 ppm/°C
Torque	0.2 to 3.0 oz-in (14.4 to 216 g-cm)

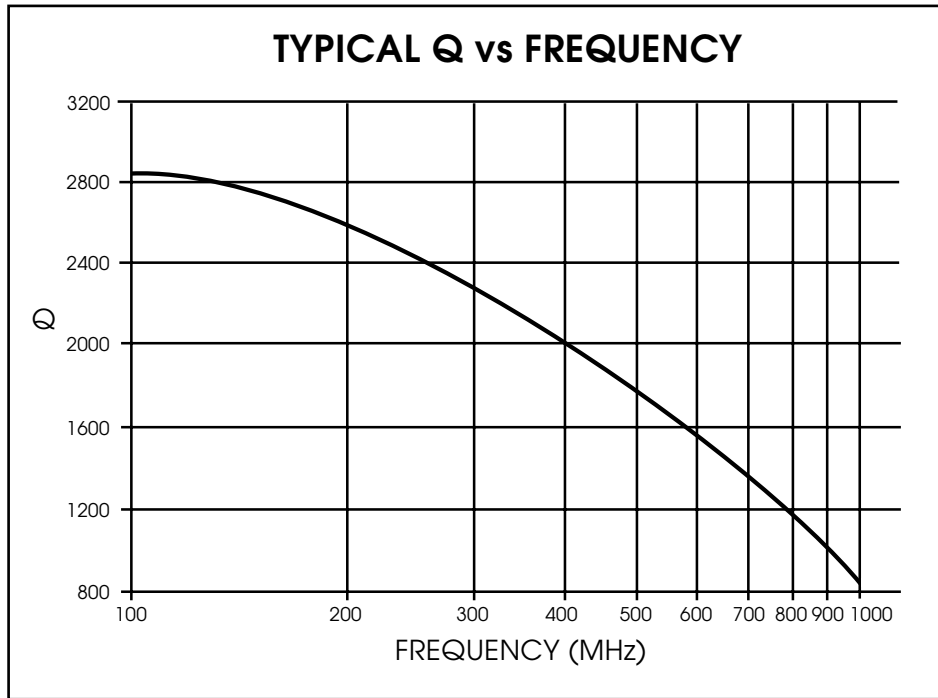
All dimensions are in / mm.

Tolerance is ± 0.005/0.13 for dimensions of 0.110/2.79 or less, and ± 0.031/0.79 for dimensions greater than 0.110/2.79, unless otherwise specified.



All dimensions are in /mm.

Tolerance is $\pm 0.005/0.13$ for dimensions of $0.110/2.79$ or less, and $\pm 0.031/0.79$ for dimensions greater than $0.110/2.79$, unless otherwise specified.



X-ON Electronics

Largest Supplier of Electrical and Electronic Components

Click to view similar products for [Trimmer/Variable Capacitors](#) category:

Click to view products by [Sprague Goodman](#) manufacturer:

Other Similar products are found below :

[GKY20086](#) [GNC8R050](#) [GXA18000](#) [GXA36000](#) [GXC90000](#) [GXE5R000NM](#) [GXL10000](#) [GZN60100](#) [PC50H230](#) [PC50J110](#) [PC51H230](#)
[GDT40026](#) [GKU90020](#) [GNR4R550](#) [GNR8R050](#) [GXL15000](#) [538-011 D 9-35LF](#) [PC39G520](#) [STPTIC-56G2C5](#) [27271LSL](#) [27281SL](#)
[STPTIC-82G2C5](#) [27283-3R10](#) [GNL8R050](#) [GYB5R000](#) [0538-006-F-15.0-60LF](#) [GXL18000](#) [GHC5R500](#) [GZD80000](#) [TP11G](#) [KT1SD](#) [KF8](#)
[KP8](#) [KM8](#) [KG8](#) [KJ8](#) [KT8](#) [KG10](#) [KP10](#) [KF10](#) [KJ10](#) [KM10](#) [TP42C](#) [NMAJ25HV](#) [KF4SD](#) [KJ1SD](#) [KP1SD](#) [KM4SD](#) [KT4SD](#) [KP4SD](#)