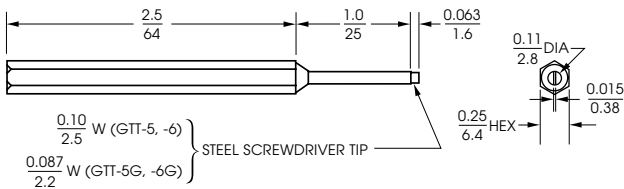


INSULATED TUNING TOOLS

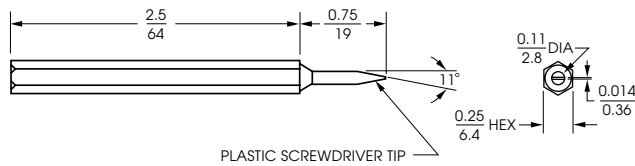
HARDENED AND PLATED STEEL TIPS

TOUGH MOLDED PLASTIC BODIES

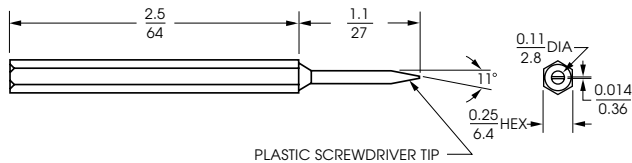
MODELS GTT-5, GTT-5G, (Nylon Bodies)
MODELS GTT-6, GTT-6G, (Antistatic Bodies)



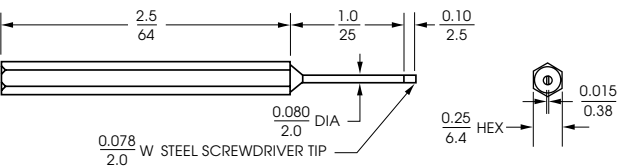
MODEL GTT-5X (All Nylon)
MODEL GTT-6X (All Antistatic)



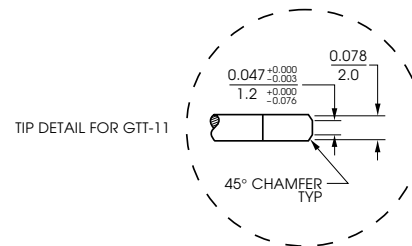
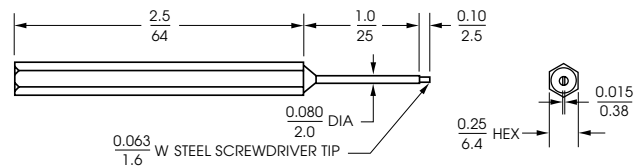
MODEL GTT-5XL (All Nylon, Long Shaft)
MODEL GTT-6XL (All Antistatic, Long Shaft)



MODEL GTT-7 (Nylon Body)
MODEL GTT-8 (Antistatic Body)

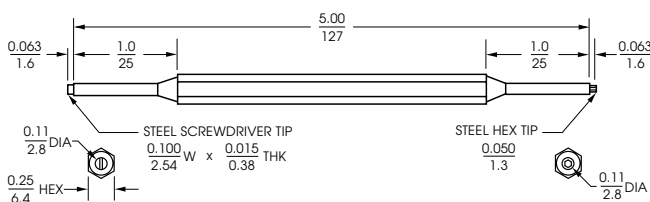


MODEL GTT-9, GTT-11 (Nylon Body)
MODEL GTT-10, GTT-12 (Antistatic Body)



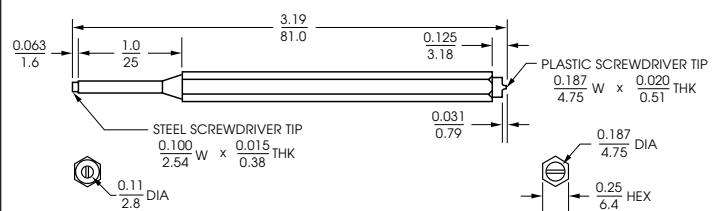
MODEL JFD-5284

Supplied with pocket clip.



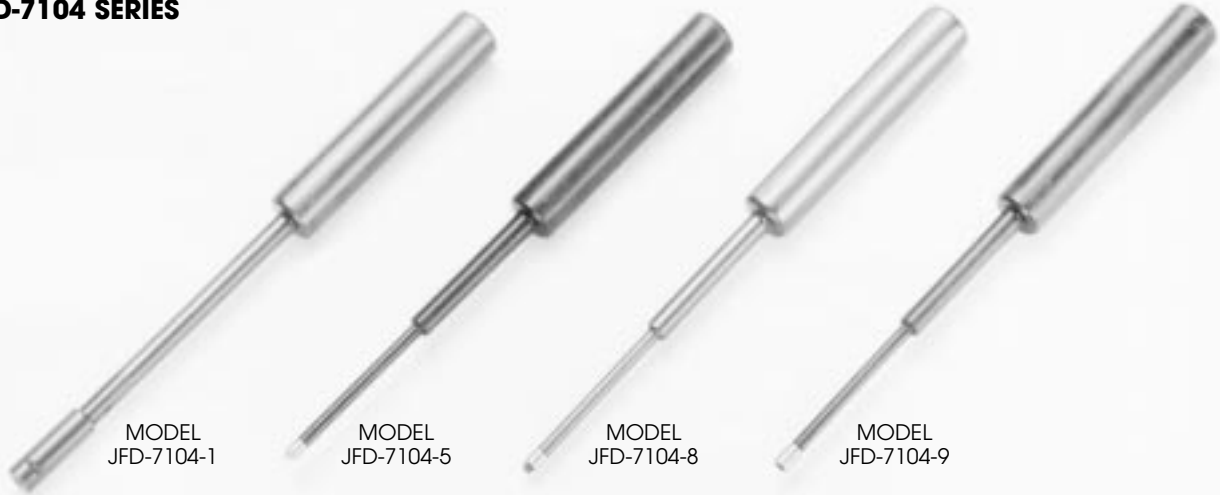
MODEL JFD-5284Z

Supplied with pocket clip.

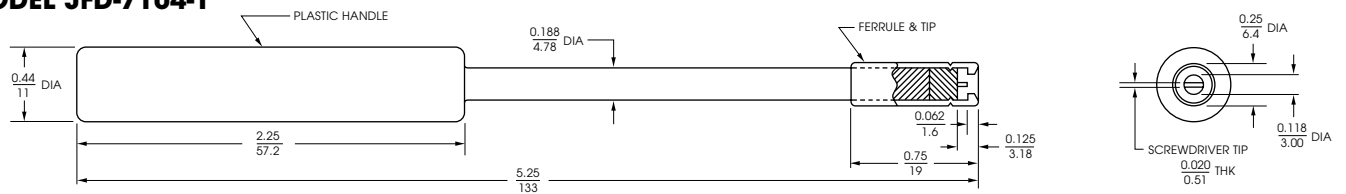


All dimensions are in / mm.

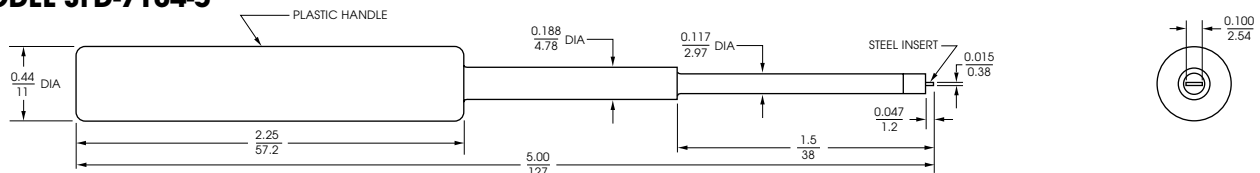
JFD-7104 SERIES



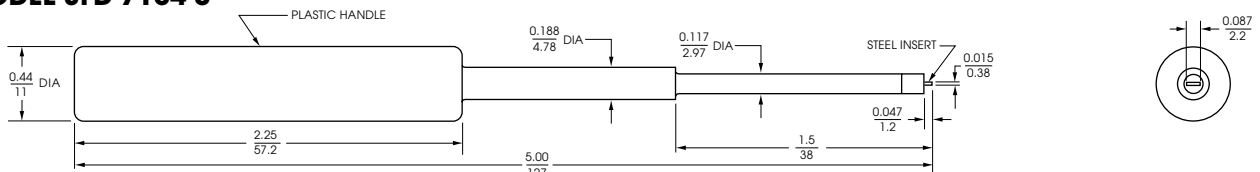
MODEL JFD-7104-1



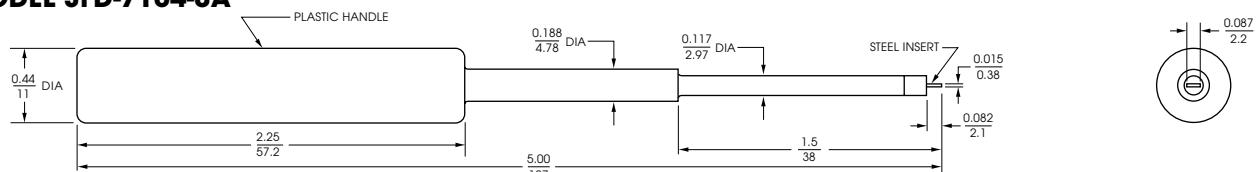
MODEL JFD-7104-5



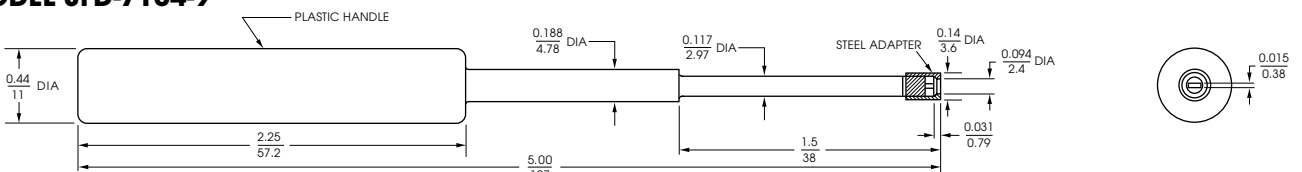
MODEL JFD-7104-8



MODEL JFD-7104-8A



MODEL JFD-7104-9



All dimensions are in /mm.

X-ON Electronics

Largest Supplier of Electrical and Electronic Components

Click to view similar products for [Sprague Goodman](#) manufacturer:

Other Similar products are found below :

[600D226G050KD5](#) [M39003/01-3067](#) [GXL10000](#) [PC50H230](#) [GAA14004](#) [GNR4R550](#) [5GAT30](#) [GNL8R050](#) [GMC80800](#)
[199D475X9025B1V1E3](#) [1C10Z5U103M050B](#) [TVA1209.4](#) [SGNMNC2356EK](#) [GAA14009](#) [PC50J110](#) [GAA6R005](#) [GNR8R050](#)
[SGNMNC2356E](#) [5GAT22](#) [GTT-9](#) [225P68492YD3](#) [GXA36000](#) [GAA10004](#) [36D431F200AB2A](#) [SGNMNC1059E](#) [JFD-7104-9](#) [PC39G520](#)
[SGNM70-10E](#) [M39006/09-8158](#) [PC52J110](#) [GDT40026](#) [1C20Z5U104M050B](#) [225P47492YD3](#) [173D106X9020W](#) [PC51H230](#) [GKG5R015](#)
[200JM6-2](#) [36DX142F450CF2A](#) [36DX973G030DF2A](#) [M39003/01-7116](#) [JFD-7104-1](#) [GXC90000](#) [GME50201](#) [GNC8R050](#) [M39018/01-1168P](#)
[1C20Z5U224M050B](#) [SG12000P](#) [GAA16006](#) [6PS-D75](#) [GZN60100](#)