



Silicon NPN Darlington Power Transistor

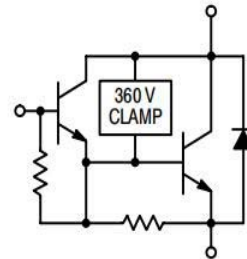
DESCRIPTION

- Low Collector Saturation Voltage
- High DC Current Gain
- High Reliability

APPLICATIONS

- Audio power amplifiers
- Relay & solenoid drivers
- Motor controls
- General purpose power amplifiers
- Including zener diode

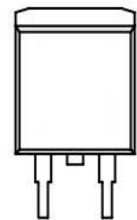
**AUTOPROTECTED
DARLINGTON
10 AMPERES
360-450 VOLTS CLAMP
150 WATTS**



ABSOLUTE MAXIMUM RATINGS($T_a=25^\circ\text{C}$)

SYMBOL	PARAMETER	VALUE	UNIT
V_{CBO}	Collector-Base Voltage	450	V
$V_{CEO(SUS)}$	Collector-Emitter Voltage	350	V
V_{EBO}	Emitter-Base Voltage	6	V
V_Z	Zener Voltage	350	V
I_C	Collector Current-Continuous	10	A
I_B	Base Current-Continuous	3.0	A
P_C	Collector Power Dissipation @ $T_c=25^\circ\text{C}$	150	W
T_J	Junction Temperature	150	$^\circ\text{C}$
T_{stg}	Storage Temperature Range	-40~150	$^\circ\text{C}$

MARKING DIAGRAM



THERMAL CHARACTERISTICS

SYMBOL	PARAMETER	MAX	UNIT
$R_{th(j-c)}$	Thermal Resistance, Junction to Case	1.0	$^\circ\text{C/W}$

Ordering Information

Product	Package	Packaging
MN638SVL-RPT0TL	TO-263	Tube



ELECTRICAL CHARACTERISTICS

$T_c=25^{\circ}\text{C}$ unless otherwise specified

SYMBOL	PARAMETER	CONDITIONS	MIN	TYP.	MAX	UNIT
V_Z	Zener Voltage	$I_Z= 0.1\text{mA}$	350		450	V
$V_{(BR)EBO}$	Emitter-Base Breakdown Voltage	$I_E= 5\text{mA}; I_C= 0$	6			V
$V_{CE(sat)}$	Collector-Emitter Saturation Voltage	$I_C= 4\text{A}; I_B= 15\text{mA}$			1.5	V
$V_{BE(sat)}$	Base-Emitter Saturation Voltage	$I_C= 4\text{A}; I_B= 15\text{mA}$			2.0	V
I_{CBO}	Collector Cutoff Current	$V_{CB}= 350\text{V}; I_E= 0$			0.1	mA
I_{EBO}	Emitter Cutoff Current	$V_{EB}= 6\text{V}; I_C= 0$			5	mA
h_{FE}	DC Current Gain	$I_C= 4\text{A}; V_{CE}= 5\text{V}$	500		4000	

X-ON Electronics

Largest Supplier of Electrical and Electronic Components

Click to view similar products for [Bipolar Transistors - BJT category](#):

Click to view products by [SPS manufacturer](#):

Other Similar products are found below :

[619691C](#) [MCH4017-TL-H](#) [MJ15024/WS](#) [MJ15025/WS](#) [BC546/116](#) [BC556/FSC](#) [BC557/116](#) [BSW67A](#) [HN7G01FU-A\(T5L,F,T](#)
[NJVMJD148T4G](#) [NSVMMBT6520LT1G](#) [NTE187A](#) [NTE195A](#) [NTE2302](#) [NTE2330](#) [NTE2353](#) [NTE316](#) [IMX9T110](#) [NTE63](#) [NTE65](#)
[C4460](#) [SBC846BLT3G](#) [2SA1419T-TD-H](#) [2SA1721-O\(TE85L,F\)](#) [2SA1727TLP](#) [2SA2126-E](#) [2SB1202T-TL-E](#) [2SB1204S-TL-E](#) [2SC5488A-](#)
[TL-H](#) [2SD2150T100R](#) [SP000011176](#) [FMC5AT148](#) [2N2369ADCSM](#) [2SB1202S-TL-E](#) [2SC2412KT146S](#) [2SC4618TLN](#) [2SC5490A-TL-H](#)
[2SD1816S-TL-E](#) [2SD1816T-TL-E](#) [CMXT2207 TR](#) [CPH6501-TL-E](#) [MCH4021-TL-E](#) [BC557B](#) [TTC012\(Q\)](#) [BULD128DT4](#) [JANTX2N3810](#)
[Jantx2N5416](#) [US6T6TR](#) [KSF350](#) [068071B](#)