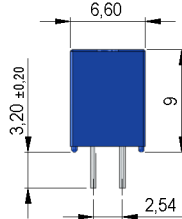
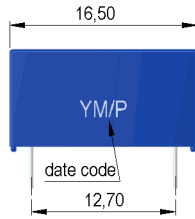


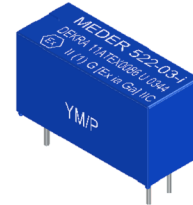
Dimensions mm[inch]

tolerances acc. to DIN ISO 2768-m
Toleranzen gem. DIN ISO 2768-m

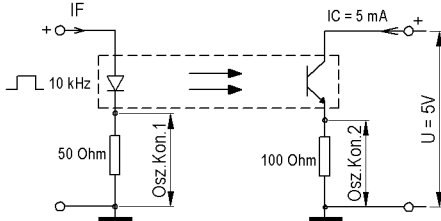


Isometric

Scale 1:2
Maßstab 1:2

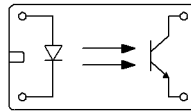


Test circuit



Layout

Top view
Draufsicht



Marking

according to EN60062/factory code
gem. EN60062/Fertigungsstätte



Elect. Coupler Characteristic	Conditions	Min	Typ	Max	Unit
Turn-on Time 1 Ton	If=10mA,Uce=5V,RL=100 Ohm		5,5		µS
Turn-Off Time 1 Toff	If=10mA,Uce=5V,RL=100 Ohm		4,2		µS
Current Transfer Ratio Ic/If CTR	If=10 mA	0,5	0,8		
Cut-Off Frequency 1 Fco	If=10mA,Uce=5V,RL=100 Ohm		50		kHz
Insulation Resistance Input/Output	RH 45%	1.000			GOhm
Insulation Voltage Input/Output Uio		4.000			VDC
Coupling capacitance Cc			0,4		pF
Creeping Distance		12			mm
Air Path Input/Output		12			mm
Insulation Distance Emitter-Detecto		2			mm

Maximum Ratings Emitter	Conditions	Min	Typ	Max	Unit
Forward Voltage Uf	If=10 mA			1,5	V
DC Forward Current If				75	mA
Reverse Voltage Ur	Ir=100 microA			5	V
Surge Forward current Ifs	t<=10 ms			500	mA
Current Reduction		0,73			mA/°C
Power Dissipation Ptot				170	mW

Maximum Ratings Detector	Conditions	Min	Typ	Max	Unit
Collector-Emitter Voltage Vce				32	VDC
Emitter-Collector Voltage Vec				5	VDC
Collector Dark Current Iceo	Uce=20V,R=1MOhm,If=0mA			0,2	µA
Collector-Emitter Saturation Voltag	If=10 mA, Ic=1 mA		0,3		VDC
Collector Peak Current Icm				100	mA
Collector Current Ic				50	mA
Power Reduction		0,91			mW/°C
Power Dissipation Ptot				100	mW



Europe: +49 / 7731 8399 0

| Email: info@standexmeder.com

USA: +1 / 508 295 0771

| Email: salesusa@standexmeder.com

Asia: +852 / 2955 1682

| Email: salesasia@standexmeder.com

Item No.:

5252203000

Item:

522-03-i

Special Product Data	Conditions	Min	Typ	Max	Unit
Connection pins				cu-alloy tinned	
Case colour				blue	
Housing material				Plastic	
Reach / RoHS conformity				yes	
Sealing compound				Polyurethan	
Approval				DEKRA 11ATEX0086 U	

Environmental data	Conditions	Min	Typ	Max	Unit
Ambient Temperature Ta		-40		85	°C
Storage temperature		-40		100	°C
Soldering temperature	wave soldering max. 5 sec.			260	°C
Shock	1/2 sine, duration 11ms, in 3 axis			50	g
Vibration	from 10 - 2000 Hz			20	g
Washability				fully sealed	

Modifications in the sense of technical progress are reserved

Designed at: 06.04.09 Designed by: KSCHIELENSKI Approval at: 10.01.14 Approval by: KOLBRICH

Last Change at: 13.04.18 Last Change by: SSCHNECKENBURGER Approval at: 17.04.18 Approval by: DSTASTNY

Version: 09

X-ON Electronics

Largest Supplier of Electrical and Electronic Components

Click to view similar products for [standexmeder](#) manufacturer:

Other Similar products are found below :

[HE12-1A69-02](#) [MK18-B-500W](#) [DIP05-1A72-12L](#) [CRF05-1AS](#) [HE06-1B83-150](#) [HE24-1A83](#) [SHV12-1A85-78L3K](#) [SIL05-1A72-71QHR](#)
[NDFEB 8X15MM](#) [BE12-2A85-BV420](#) [KT12-1A-BV88589](#) [MK04-1A66B-500W](#) [DIP05-1A72-13L](#) [HM24-1A69-20-6](#) [HM12-1A83-06-UL](#)
[MS05-1A87-75DHR](#) [H12-1B83](#) [KT12-1A-40L-THT](#) [SIL05-1A31-71L](#) [LI05-1A85](#) [NDFEB 10X5X1.9MM](#) [LS01-1A66-PP-500W](#) [M11/M8](#)
[LS02-1A66-PP-500W](#) [NDFEB N35 4X2MM](#) [HM24-1A69-300](#) [LS02-1A66-PA-500W](#) [KT05-1A-40L-THT](#) [MK21M-1A66C-500W](#) [DIP24-](#)
[1C90-51D](#) [SIL24-1A75-71L](#) [DIP12-1A72-12L](#) [ORD211-1015](#) [DIP12-2A72-21L](#) [H24-1A83](#) [MK17-C-3](#) [SHV12-1A85-78L4K](#) [DIP05-1C90-](#)
[51D](#) [HE24-1A83-02](#) [MK02/0-1A66-1000W](#) [DIL05-2C90-63L](#) [DIP24-1A72-12L](#) [HM24-1A69-06](#) [HE06-1A16](#) [DIP24-1A31-16D](#) [MK03-](#)
[1A66E-500W](#) [ALNICO500; 10X40MM](#) [LS01-1A66-PA-500W](#) [ORD228VL-2030](#) [DIP05-1C90-51L](#)