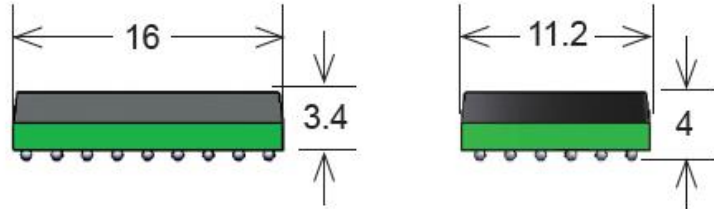
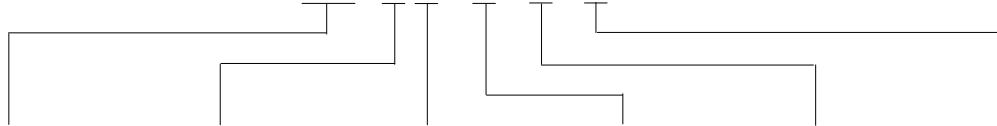


# RM05-4A Series Reed Relays



- Features: 4-Pole Low Profile SMD RF Relay Module, <40ps Rise Time for Switching Fast Pulses, BGA
- Applications: High Frequency Applications, Automated Test Equipment & Others
- Markets: Test and Measurement, Telecommunications & Others

Part Description: **RM05-0X-S-4/0**



Nominal Voltage	Contact QTY	Contact Form	Solder Balls	Input	Output
05	4	4A, 2A2B	S	4	2, 4

Customer Options	Switch Model	Unit
<b>Contact Data</b>	<b>80/1</b>	
<b>Rated Power (max.)</b> Any DC combination of V&A not to exceed their individual max.'s	10	W
<b>Switching Voltage (max.)</b> DC or peak AC	170	V
<b>Switching Current (max.)</b> DC or peak AC	0.5	A
<b>Carry Current (max.)</b> DC or peak AC	0.5	A
<b>Contact Resistance (max.)</b> @ 0.5V & 50mA	200	mOhm
<b>Breakdown Voltage (min.)</b> According to EN60255-5	0.21	kVDC
<b>Operating Time (max.)</b> Incl. Bounce; Measured with w/ Nominal Voltage	0.1	ms
<b>Release Time (max.)</b> Measured with no Coil Excitation	0.02	ms
<b>Insulation Resistance (typ.)</b> Rh<45%, 100V Test Voltage	1	GOhm
<b>Capacitance (typ.)</b> @ 10kHz across open Switch	0.1	pF

Series Datasheet – RM05-4A Reed Relays

www.standexmeder.com

Coil Data			
Contact Form		4A, 2A2B	Unit
Switch Model		80	
Coil Voltage	(nom.)	5	VDC
Coil Resistance	(typ.)	185	Ohm
Pull-In Voltage	(max.)	3.75	VDC
Drop-Out Voltage	(min.)	0.5	VDC
Nominal Coil Power	(typ.)	135	mW

The Pull-In / Drop-Out Voltage and Coil Resistance will change at Rate of 0.4% per °C

Relay Data		
Module Characteristics		
Insertion Loss (typ.)	Input/Output	On request
Voltage Standing Wave Ratio (typ.)	Input/Output	On request
Isolation (typ.)	Input/Output	On request
Rise Time (typ.)	Input/Output	On request
Charateristics. Impedance (typ.)	0.5	On request

Environmental Data		Unit
Shock Resistance (max.) 1/2 sine wave duration 11ms	50	g
Vibration Resistance (max.)	10	g
Operating Temperature	-20 to 85	°C
Storage Temperature	-35 to 125	°C
Soldering Temperature (max.) 5 sec. max.	220	°C

Glossary Contact Form		
Form A	NO = Normally Open Contacts SPST = Single Pole Single Throw	
Form B	NC = Normally Closed Contacts SPST = Single Pole Single Throw	
Form C	Changeover SPDT = Single Pole Double Throw	

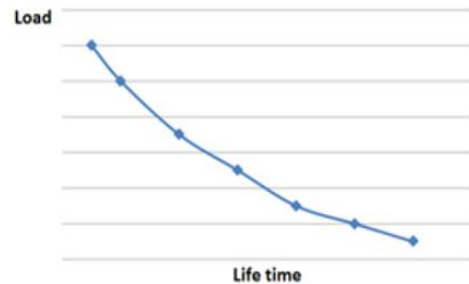


RM05-4A Reed Relay



Life Test Data

\*Load increase reduces life expectancy of Reed Switches



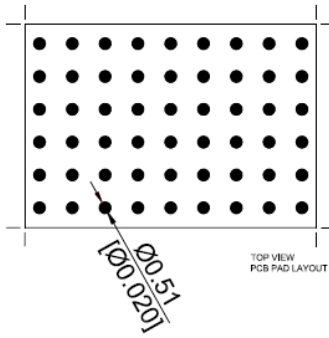
Handling & Assembly Instructions

- Switching inductive and/or capacitive loads create voltage and/or current peaks, which may damage the relay. Protective circuits need to be used.
- External magnetic fields needs to be taken into consideration, including a too high packing density. This may influence the relays' electrical characteristics.
- Mechanical shock impacts e.g. dropping the relays may cause immediate or post-installation failure.
- Wave soldering: maximum 260°/5 seconds.
- Reflow soldering: Recommendations given by the soldering paste manufacturer need to be considered as well as the temperature limits of other components/processes.

**Pad Layout**

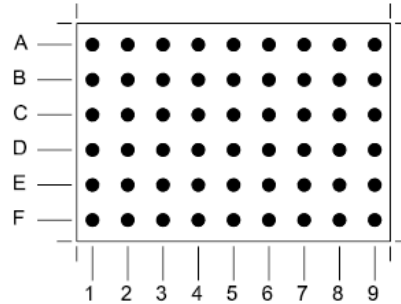
Top View

GRID SPACING IS 1.8mm ON CENTER



**Pad Designation**

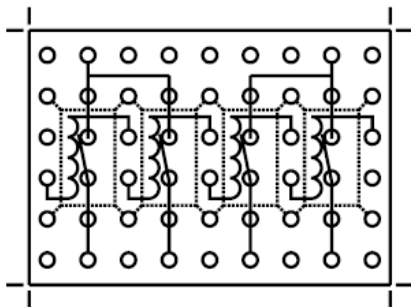
Top View



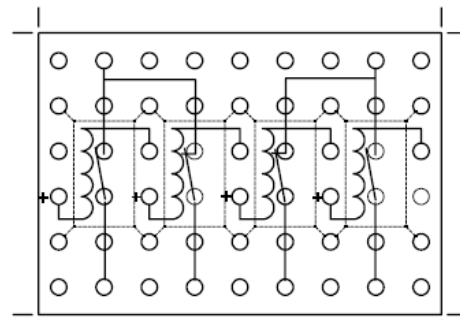
**Schematic**

Top View

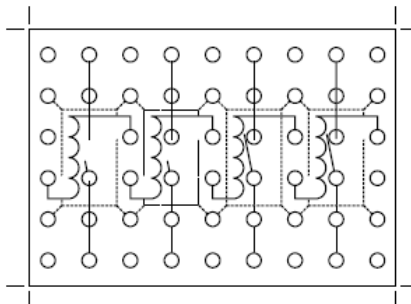
4A-S-4/2



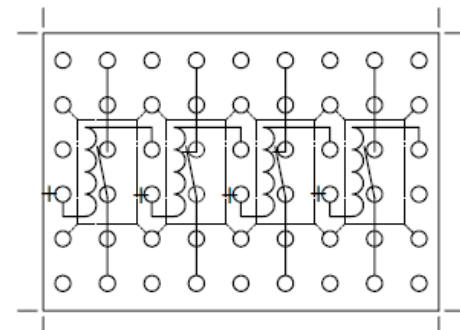
2A2B-S-4/2



4A-S-4/4



2A2B-S-4/4



## X-ON Electronics

Largest Supplier of Electrical and Electronic Components

*Click to view similar products for [Reed Relays](#) category:*

*Click to view products by [Standexmeder](#) manufacturer:*

Other Similar products are found below :

[M2C24AH](#) [D1A05HD-3](#) [741A10](#) [8000-0211](#) [8000-0217](#) [836C2](#) [922A06C4C](#) [PRMA1A12C](#) [PRMA1A24B](#) [PRMA1A24C](#) [PRMA1B12C](#)  
[PRMA1B24C](#) [PRMA1C05F](#) [PRMA2A24C](#) [R1C5DR](#) [R2A5D](#) [1220-0039](#) [RA30521051](#) [RA31232051](#) [HGS1005](#) [HGS1021](#) [HGS1048](#)  
[HGS1088](#) [HGS2MT51111F00](#) [HGS2MT51111M00](#) [HGZM1C24](#) [HGZM2C05](#) [HGZM2C48](#) [DA1A24DWD](#) [DA1A-24V](#) [DA1C05FWD](#)  
[DA1C12FW](#) [DA2A-6V](#) [134MPCX-3](#) [MRR1ADS8-12D](#) [MRR1ADS8-24D](#) [MRR1ADS8-5D](#) [MRR1ADSK-12D](#) [159-151-T00](#) [MSS62A05](#)  
[MSS71A05](#) [MSS71A05B](#) [MSS71A12](#) [MSS71A24](#) [1804-105](#) [191TE1C2M-5S](#) [191TE2A1-5G](#) [191TE2A1-6G](#) [193RE4C3-24G](#) [HYR2001-1520](#)