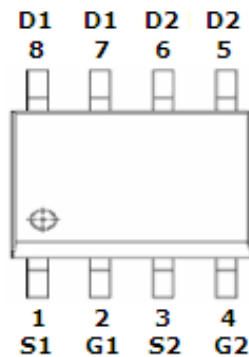
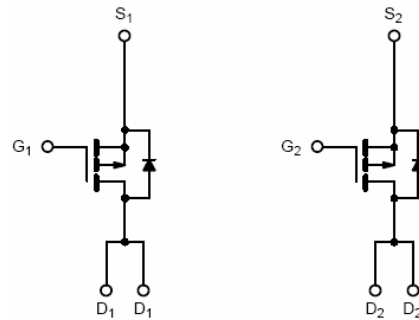


DESCRIPTION

STP4925 is the dual P-Channel logic enhancement mode power field effect transistor are produced using high cell density, DMOS trench technology. This high density process is especially tailored to minimize on-state resistance. These devices are particularly suited for low voltage application, notebook computer power management, and other battery powered circuits where high-side switching

PIN CONFIGURATION
SOP-8

FEATURE

- -30V/-7.2A, $R_{DS(ON)} = 20m\Omega$ (Typ.) @ $V_{GS} = -10V$
- -30V/-5.6A, $R_{DS(ON)} = 25m\Omega$ @ $V_{GS} = -4.5V$
- Super high density cell design for extremely low $R_{DS(ON)}$
- Exceptional on-resistance and maximum DC current capability
- SOP-8 package design

PART MARKING
SOP-8


Y : Year Code
A : date Code
B : Process Code



STP4925  Lead-free

Dual P Channel Enhancement Mode MOSFET
-7.2A

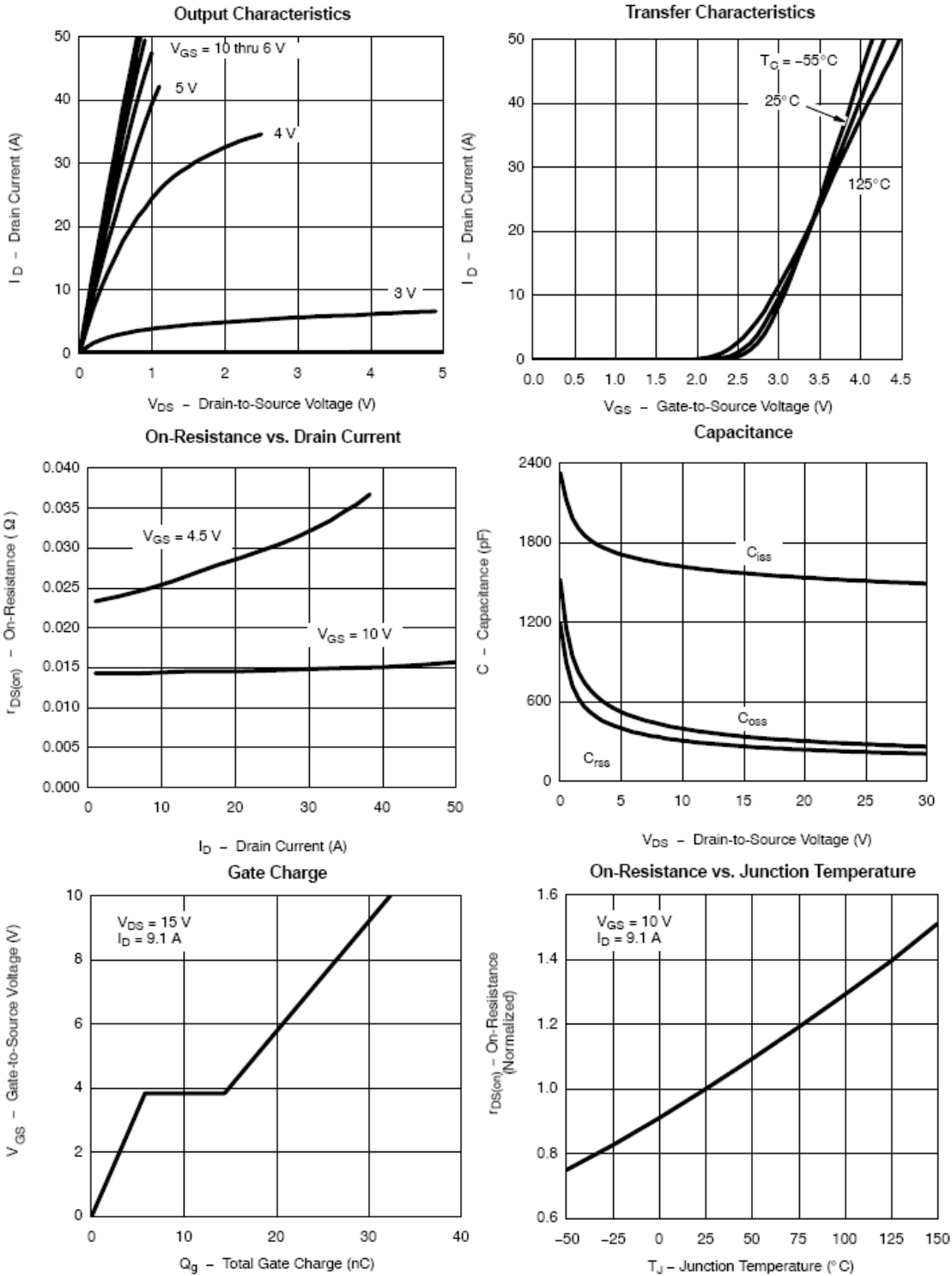
ABSOLUTE MAXIMUM RATINGS (Ta = 25°C Unless otherwise noted)

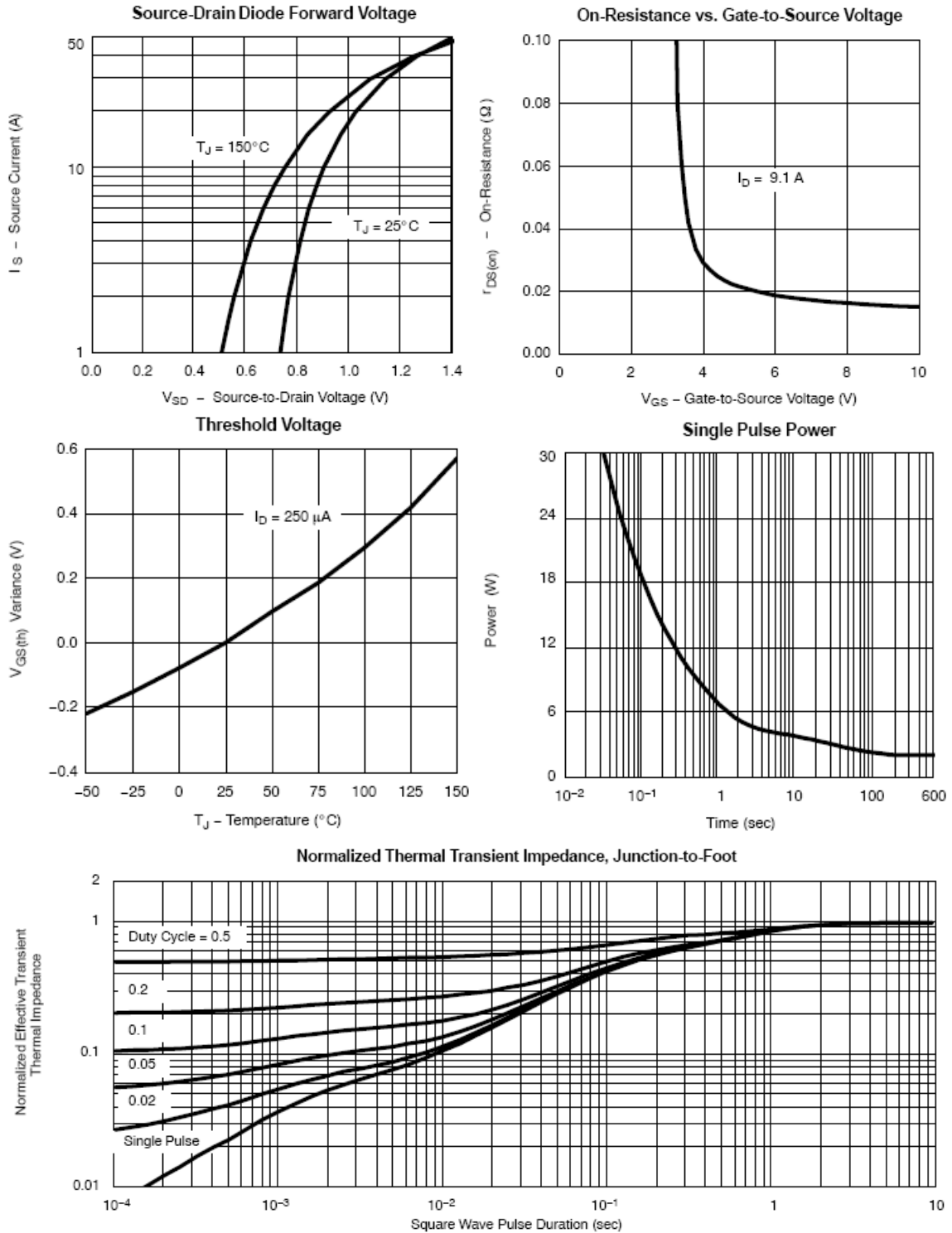
Parameter		Symbol	Typical	Unit
Drain-Source Voltage		V _{DSS}	-30	V
Gate-Source Voltage		V _{GSS}	±20	V
Continuous Drain Current (T _J =150°C)	T _A =25°C T _A =70°C	I _D	-7.2 -5.6	A
Pulsed Drain Current		I _{DM}	-50	A
Continuous Source Current (Diode Conduction)		I _S	-2.3	A
Power Dissipation	T _A =25°C T _A =70°C	P _D	2.8 1.8	W
Operation Junction Temperature		T _J	-55/150	°C
Storage Temperature Range		T _{STG}	-55/150	°C
Thermal Resistance-Junction to Ambient		R _{θJA}	70	°C/W

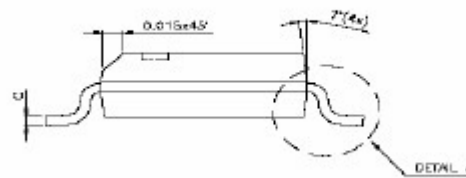
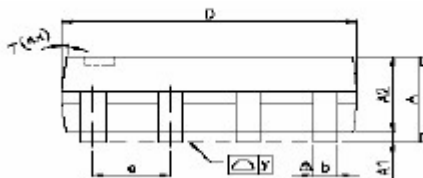
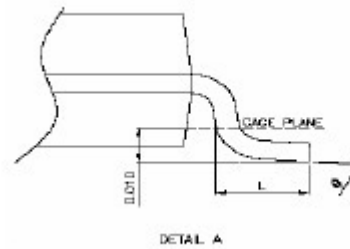
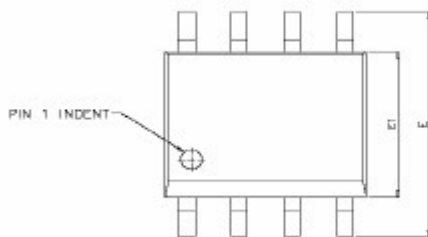
ELECTRICAL CHARACTERISTICS (Ta = 25°C Unless otherwise noted)


Parameter	Symbol	Condition	Min	Typ	Max	Unit
Static						
Drain-Source Breakdown Voltage	$V_{(BR)DSS}$	$V_{GS}=0V, I_D=-250\mu A$	-30			V
Gate Threshold Voltage	$V_{GS(th)}$	$V_{DS}=V_{GS}, I_D=-250\mu A$	-1.0		-3.0	V
Gate Leakage Current	I_{GSS}	$V_{DS}=0V, V_{GS}=\pm 20V$			± 100	nA
Zero Gate Voltage Drain Current	I_{DSS} $T_J=55^\circ C$	$V_{DS}=-30V, V_{GS}=0V$			-1	uA
		$V_{DS}=-30V, V_{GS}=0V$			-5	
Drain-source On-Resistance	$R_{DS(on)}$	$V_{GS}=-10V, I_D=-7.2A$		0.020	0.027	Ω
		$V_{GS}=-4.5V, I_D=-5.6A$		0.025	0.031	
Forward Tran Conductance	g_{fs}	$V_{DS}=-10V, I_D=-9.0A$		24		S
Diode Forward Voltage	V_{SD}	$I_S=-2.3A, V_{GS}=0V$		-0.8	-1.0	V
Dynamic						
Total Gate Charge	Q_g	$V_{DS}=-15V, V_{GS}=-10V$ $I_D=-9.0A$		16	24	nC
Gate-Source Charge	Q_{gs}			2.3		
Gate-Drain Charge	Q_{gd}			4.5		
Input Capacitance	C_{iss}	$V_{DS}=-15V, V_{GS}=0V$ $f=1MHz$		1650		pF
Output Capacitance	C_{oss}			350		
Reverse Transfer Capacitance	C_{rss}			235		
Turn-On Time	$t_{d(on)}$ t_r	$V_{DD}=15V, R_L=15\Omega$ $I_D=-1.0A, V_{GEN}=-10V$ $R_G=6\Omega$		16	30	nS
				17	30	
Turn-Off Time	$t_{d(off)}$ t_f			65	110	
				35	80	

TYPICAL CHARACTERISTICS (25°C Unless Note)



TYPICAL CHARACTERISTICS (25°C Unless Note)


SOP-8 PACKAGE OUTLINE


SYMBOLS	DIMENSIONS IN MILLIMETERS			DIMENSIONS IN INCHES		
	MIN	NOM	MAX	MIN	NOM	MAX
A	1.47	1.60	1.73	0.058	0.063	0.068
A1	0.10	—	0.25	0.004	—	0.010
A2	—	1.45	—	—	0.057	—
b	0.33	0.41	0.51	0.013	0.016	0.020
C	0.19	0.20	0.25	0.0075	0.008	0.0098
D	4.80	4.85	4.95	0.189	0.191	0.195
E	5.80	6.00	6.20	0.228	0.236	0.244
E1	3.80	3.90	4.00	0.150	0.154	0.157
e	—	1.27	—	—	0.050	—
L	0.38	0.71	1.27	0.015	0.028	0.050
 y	—	—	0.076	—	—	0.003
θ	0°	—	8°	0°	—	8°

X-ON Electronics

Largest Supplier of Electrical and Electronic Components

Click to view similar products for [MOSFET](#) category:

Click to view products by [STANSON Tech](#) manufacturer:

Other Similar products are found below :

[IRFD120](#) [JANTX2N5237](#) [BUK455-60A/B](#) [MIC4420CM-TR](#) [VN1206L](#) [NDP4060](#) [SI4482DY](#) [IPS70R2K0CEAKMA1](#) [SQD23N06-31L-GE3](#)
[TK16J60W,S1VQ\(O](#) [2SK2614\(TE16L1,Q\)](#) [DMN1017UCP3-7](#) [DMN1053UCP4-7](#) [SQJ469EP-T1-GE3](#) [NTE2384](#) [DMC2700UDMQ-7](#)
[DMN2080UCB4-7](#) [DMN61D9UWQ-13](#) [US6M2GTR](#) [DMN31D5UDJ-7](#) [DMP22D4UFO-7B](#) [DMN1006UCA6-7](#) [DMN16M9UCA6-7](#)
[STF5N65M6](#) [IRF40H233XTMA1](#) [STU5N65M6](#) [DMN6022SSD-13](#) [DMN13M9UCA6-7](#) [DMTH10H4M6SPS-13](#) [DMN2990UFB-7B](#)
[IPB80P04P405ATMA2](#) [2N7002W-G](#) [MCAC30N06Y-TP](#) [MCQ7328-TP](#) [BXP7N65D](#) [BXP4N65F](#) [AOL1454G](#) [WMJ80N60C4](#) [BXP2N20L](#)
[BXP2N65D](#) [BXT1150N10J](#) [BXT1700P06M](#) [TSM60NB380CP](#) [ROG](#) [RQ7L055BGTCTCR](#) [DMNH15H110SK3-13](#) [SLF10N65ABV2](#)
[BSO203SP](#) [BSO211P](#) [IPA60R230P6](#) [IPA60R460CE](#)