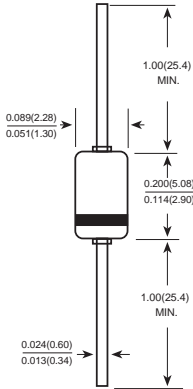


DB3

BIDIRECTIONAL TRIGGER DIODE

Reverse Voltage - 32 Volts Power: 150mW

DO-35(GLASS)



Dimensions in inches and (millimeters)

FEATURES

- ◆ Small glass structure ensures high reliability
- ◆ VBO:28-36V version
- ◆ Low breakover current
- ◆ High temperature soldering guaranteed
260°C/10 seconds, 0.375" (9.5mm) lead length,
5 lbs. (2.3kg) tension

MECHANICAL DATA

Case: JEDEC DO-35 glass body

Terminals: Plated axial leads, solderable per MIL-STD-750,
Method 2026

Mounting Position: Any

Weight: 0.005 ounce, 0.14gram

MAXIMUM RATINGS AND CHARACTERISTICS

Ratings at 25°C ambient temperature unless otherwise specified.

	TEST CONDITION	SYMBOLS	VALUE			UNITS
			Min.	Typ.	Max.	
Breakover voltage *	C=22nF **	V _{BO}	28	32	36	VOLTS
Breakover voltage symmetry	C=22nF **	+V _{BO} -I-V _{BO}	-3		3	VOLTS
Dynamic breakover voltage *	(NOTE 1)	ΔV ± I	5			VOLTS
Output voltage *	DIAGRAM2	V _o	5			VOLTS
Breakover current *	C=22nF **	I _{BO}			100	μA
Rise time *	DIAGRAM3	t _r		1.5		μS
Leakage current *	V _R =0.5V _{BO}	I _B			10	μA
Power dissipation on printed circuit	T _A =65°C	P _d			150	mW
Repetitive peak on-state current	t _p =20μs f=100Hz	I _{TRM}			2	A
Thermal Resistances from Junction to ambient		R _{θJA}			400	°C/W
Thermal Resistances from Junction to lead		R _{θJL}			150	
Operating junction and storage temperature range		T _J , T _{STG}	-40		125	°C

* :Electrical characteristic appoicaboe in forward and reverse directions.

** :Connected in parallel with the devices.

Note 1:I_{BO} from I_{BO} to 10mA

RATINGS AND CHARACTERISTIC CURVES DB3

DIAGRAM 1: CURRENT-VOLTAGE CHARACTERISTICS

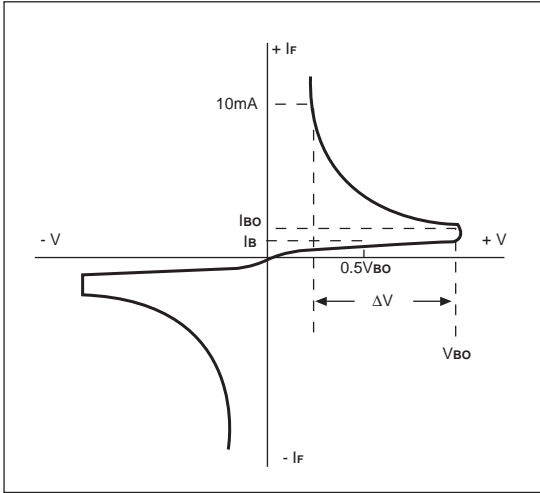


FIG. 1-POWER DISSIPATION VERSUS AMBIENT TEMPERATURE(MAXIMUM VALUES)

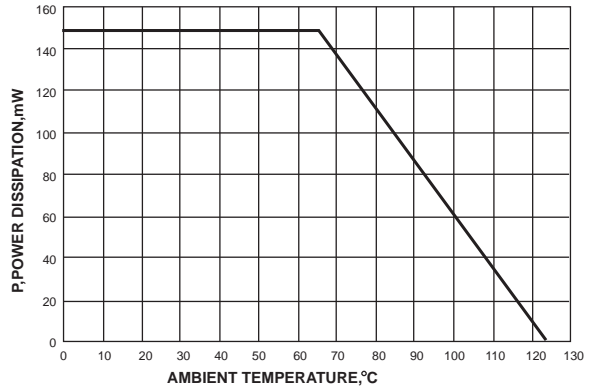


DIAGRAM 2: TEST CIRCUIT OUTPUT VOLTAGE

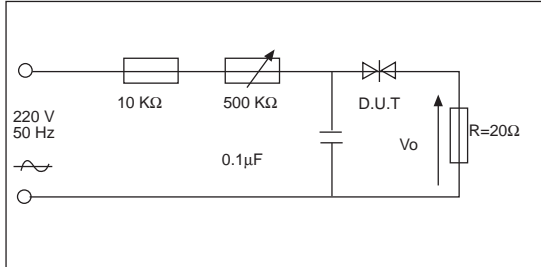


FIG. 2-PEAK PULSE CURRENT VERSUS PULSE DURATION (MAXIMUM VALUES)

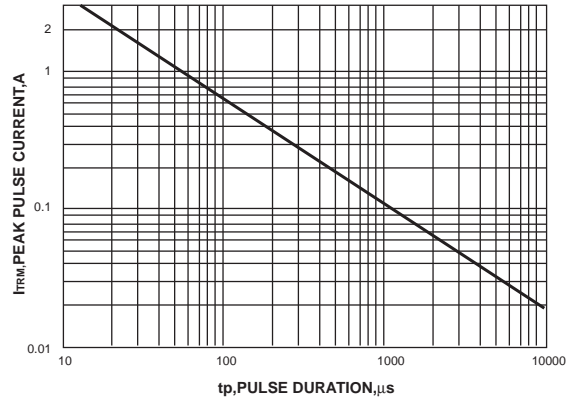


DIAGRAM 3: TEST CIRCUIT SEE DIAGRAM 2. ADJUST R FOR $I_p=0.5A$

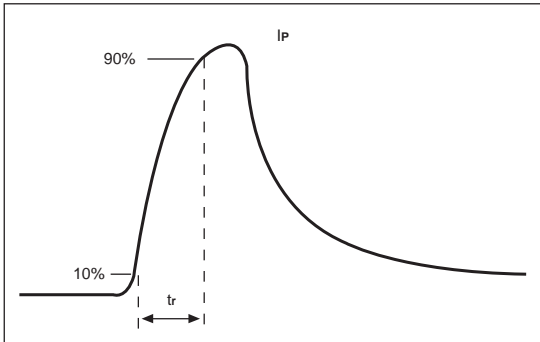
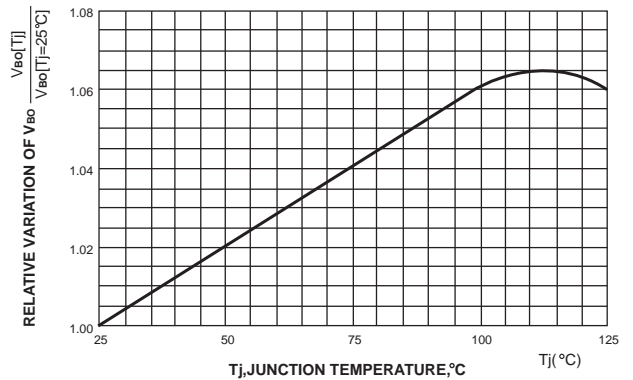


FIG. 3-RELATIVE VARIATION OF V_{Bo} VERSUS JUNCTION TEMPERATURE(TYPICAL VALUES)



X-ON Electronics

Largest Supplier of Electrical and Electronic Components

Click to view similar products for [Diacs](#) category:

Click to view products by [Starsea](#) manufacturer:

Other Similar products are found below :

[DB3-TP](#) [DLDB3](#) [DLDB4](#) [NTE6407](#) [DB3TG](#) [DB3](#) [DB4](#) [DB4](#) [NTE6412](#) [DB4](#) [NTE6408](#) [NTE6411](#) [BEP0080SB](#) [BEP0300SC](#) [BEP3500SB](#)
[TISP4350H3BJR-S](#) [2SC2983](#) [DB3](#) [K1050E70](#) [K1100E70](#) [K1200E70](#) [K1400E70](#) [K1500E70](#) [K2000E70](#) [K2200E70](#) [K2200G](#) [K2400G](#)
[P0080EAL](#) [P0080SBLRP](#) [P0720ECLRP1](#) [P1500SALRP](#) [P2600EAL](#) [P2600EBL](#) [P3100SCLRP](#) [P3203ABL](#) [P3500SBLRP](#)
[SDP0240T023G6RP](#) [P4500SCLRP](#) [LLDB3](#) [DB3](#) [DB3](#) [DB3](#) [DB4](#) [SMDB3](#) [TMMDB3](#) [TMMDB3TG](#) [LLDB3](#) [SODDB3T](#) [RHG](#)